

Revision	Date	Description



CITY OF ROCKWALL
 Owner:
 Developer:
Sterling One Construction L.L.C.
 #2 Horizon Court Heath, Texas 75032 469-772-9400

Harbor District Infrastructure
 Rockwall, Texas

F.C. CUNY CORPORATION
 #2 Horizon Court • Heath, Texas 75032 • (469) 402-7700
 Texas Registered Engineering Firm E-7449

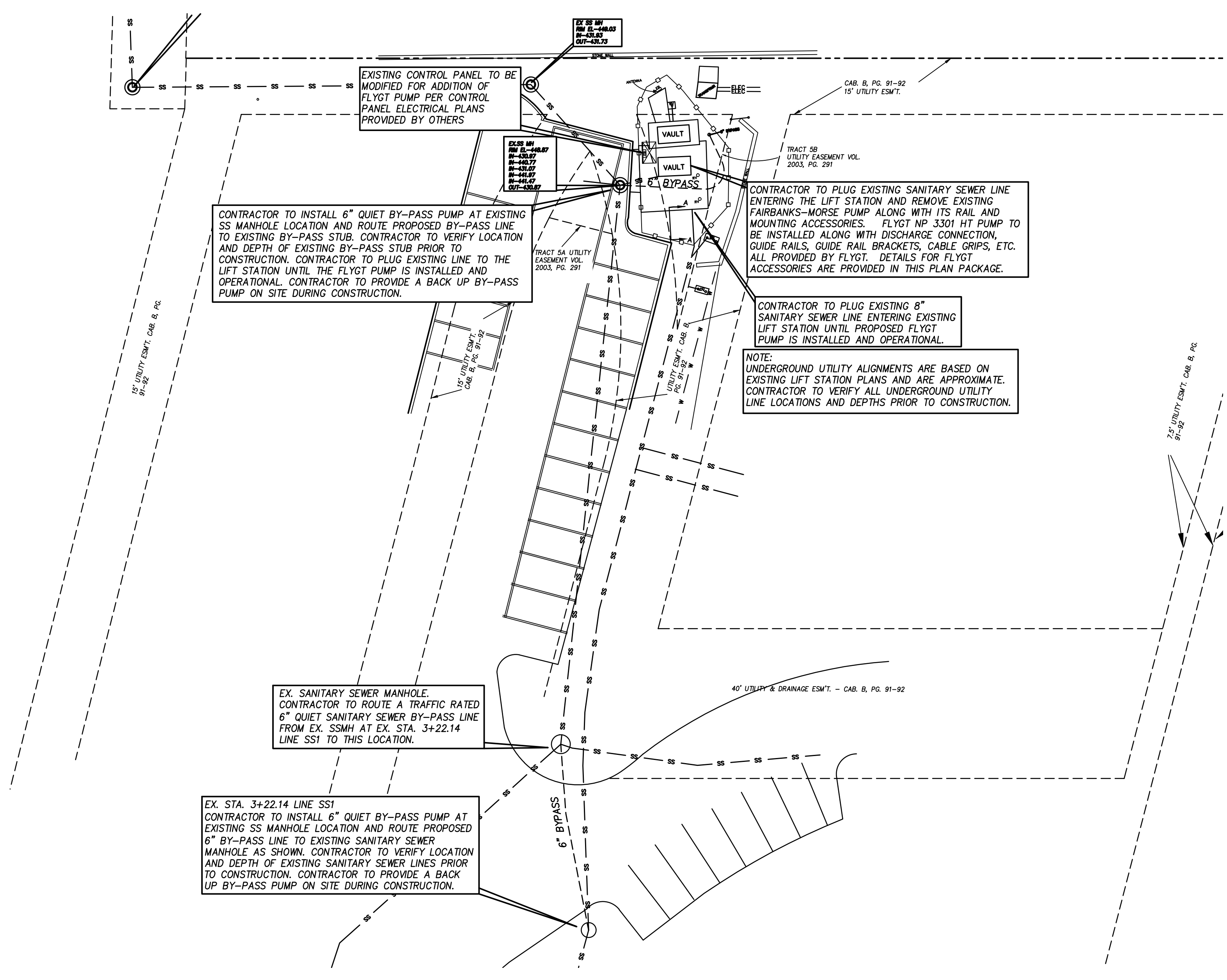
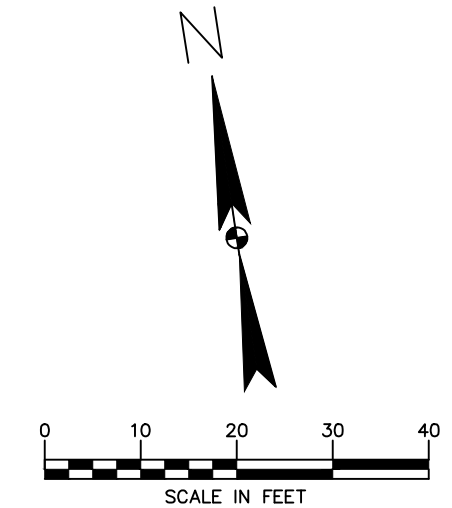
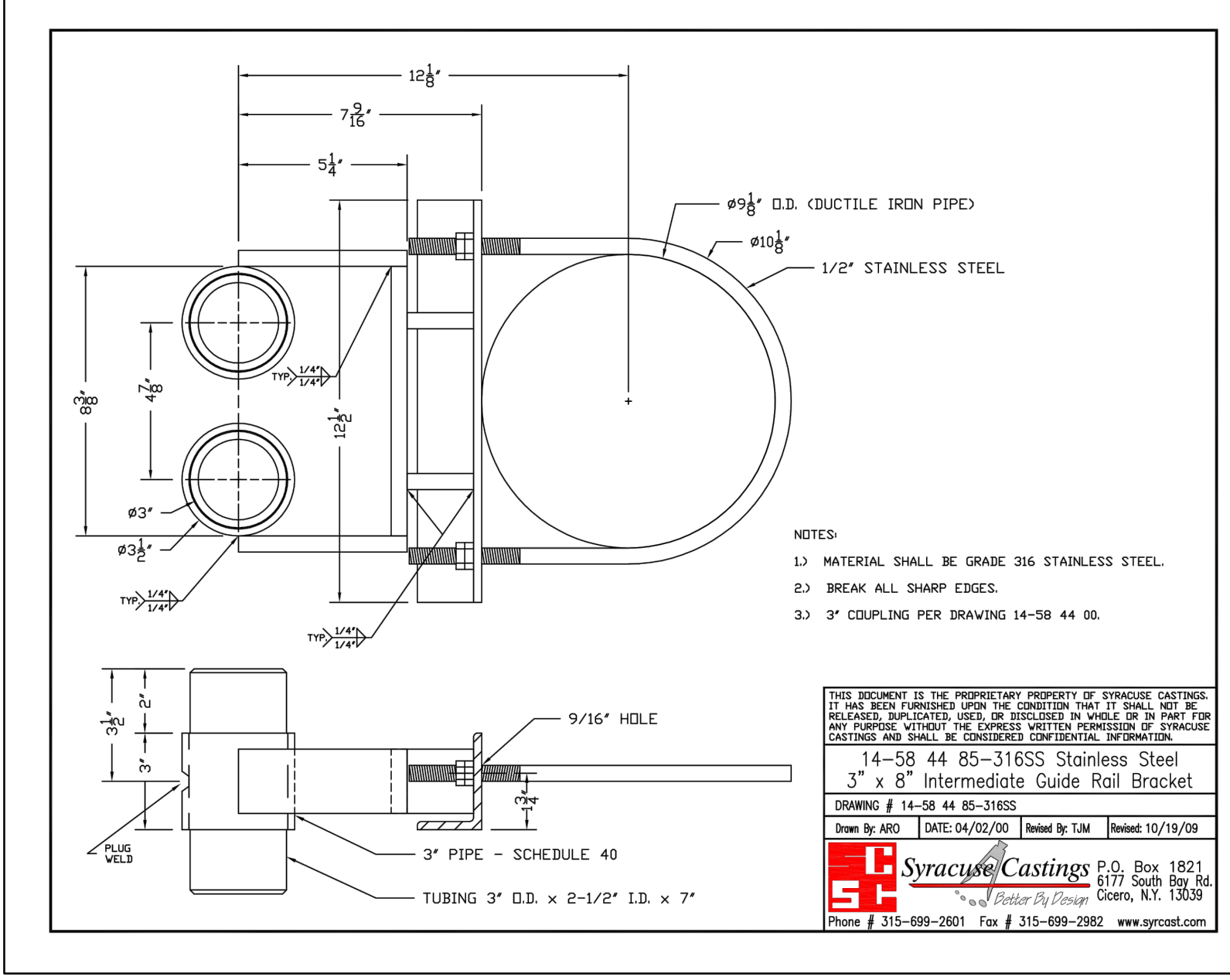
THE SEAL APPEARING ON THIS DOCUMENT WAS AUTHORIZED BY CHRISTOPHER R. CUNY, P.E. 65642



Drawn By: F.C. CUNY
 Checked By: F.C. CUNY
 Date: 09/11
 Project No.:
 Sheet Title: **Signal Ridge Lift Station Plan**
 Scale: 1" = 20'
 Sheet No.: 19 of 21

GENERAL NOTES

1. WASTEWATER SERVICE MUST BE MAINTAINED TO THE AREA SERVED BY THE EXISTING LIFT STATION AT ALL TIMES.
2. CONTRACTOR SHALL COORDINATE AND SCHEDULE ALL ACTIVITIES ASSOCIATED WITH THE INSTALLATION OF THE FLYGT PUMP INTO THE EXISTING WET WELL IN ORDER TO MAINTAIN WASTEWATER SERVICE TO THE AREA.
3. LIFT STATION SITE AND CONSTRUCTION ACTIVITIES SHALL REMAIN FENCED AND SECURED DURING CONSTRUCTION PERIOD.
4. LOCATION AND ELEVATION OF EXISTING UTILITIES AND FEATURES ARE APPROXIMATE. PRIOR TO CONSTRUCTION, CONTRACTOR SHALL FIELD LOCATE ALL LINES THAT MAY AFFECT WORK.
5. DURING CONSTRUCTION, SUPPORT EXISTING LINES AS NECESSARY TO MAINTAIN SERVICE AT ALL TIMES.
6. SEQUENCE NOTES:
 - A. INSTALL TEMPORARY PUMP AND RAILING INTO EXISTING 4' DIAMETER MANHOLE AS SHOWN ON THIS PLAN.
 - B. CONSTRUCT A TEMPORARY SERVICE FORCE MAIN AT GROUND LEVEL FROM EXISTING 4' DIAMETER MANHOLE TO THE EXISTING BYPASS LINE LOCATED TO THE NORTH OF THE EXISTING LIFT STATION.
 - C. CONSTRUCT A TEMPORARY SERVICE FORCE MAIN FROM EX. STA. 3+22.14 TO SHOWN EXISTING MANHOLE.
 - D. PLUG EXISTING 12" SEWER LINE TO EXISTING LIFT STATION AND TURN ON TEMPORARY PUMP AT ADJACENT MANHOLE.
 - E. PLUG EXISTING 8" SEWER LINE TO EXISTING LIFT STATION AND TURN ON TEMPORARY PUMP AT EX. STA. 3+22.14
 - D. SET PROPOSED PUMP IN EXISTING LIFT STATION, UNPLUG EXISTING 12" SEWER LINE AT THE MANHOLE AND EXISTING 8" SEWER LINE AT LIFT STATION.
 - E. REMOVE TEMPORARY PUMPS AND REMOVE 6" TEMPORARY FORCE MAINS.



FLYGT a xylem brand

STANDARD PART INFORMATION

Doc Type: Standard
 A-class: A2061
 M-class/Serial No: M3792.98.0001
 Archive Code: A2711.1
 Page: 1 (1)
 Edition: 2
 Date: 2008-03-13
 Issued by: VPSB

CABLE SUPPORT GRIP

Material:
 - Support grip: Stainless steel SS 14 2343
 - Thimble: Stainless steel SS 14 2333
 - Press lock: Copper

For cable D _c (mm)	Breadth B (mm)	Length of loop L (mm)	Number of meshes A (sp/pcs)	Tot. cable weight kg	Part number
11-18	8	250	18	100	83 57 23
19-24	9	300	18	150	83 57 24
25-36	11	300	18	150	83 57 25
37-49	15	500	25	300	83 57 26
50-59	16	500	25	300	83 57 27
60-74	17	600	25	450	83 57 28

FLYGT a xylem brand

Issued: 2/12 Supersedes: 12/11

Standard CP/NP Discharge Connections (Cast Iron)

All dimensions (inches)

Pump Model	Part Number	Disch. Inlet	Disch. Outlet	A	B	C	D	E	F	G	H	I	J	K
2"-3045, 3057, CP/FP-3068	486 55 01	2"	2" x 1 1/2"	3 1/8"	4	4 1/2	5 1/2	7 1/4	8 3/4	3 1/8"	7/8	---	---	---
2 1/2" - DP/FP-3068	483 17 06	2 1/2"	2 1/2"	11 5/8	7 7/8	4 3/4	7 7/8	11 3/16	9 7/8	6 1/2	4 9/16	45°	90° x 4	5 5/8
3"-3045, 3057, CP-3068	555 48 01	2"	3/8 NPT	6 3/4	5 1/2	4 1/8	5 1/2	10 3/4	6 3/4	3 1/8"	7/8	---	---	---
3" - DP-3068, 3080, 3085, 3102, 3127, 3153, 3171, 3202	444 68 05	3"	3"	14	9 7/8	8	10 5/8	15 3/8	15 3/4	7 7/8	4 9/16	45°	90° x 4	6
4" - 3080, 3085, 3102, 3127, 3153, 3171, 3202	540 13 05	4"	4"	14 3/8	9 7/8	8	10 5/8	15 3/8	15 3/4	7 7/8	4 9/16	22.5°	45° x 8	7 1/2
6" - 3102, 3127(M), 3153, 3171	444 70 06	5 1/2"	6"	15 5/16	11	10	12 3/16	15 3/8	17 3/4	9 7/8	4 9/16	22.5°	45° x 8	9 1/2
6" - 3153, 3171, 3202	602 33 06	5 1/2"	6"	15 5/16	11	10	12 3/16	15 3/8	17 3/4	9 7/8	4 9/16	22.5°	45° x 8	9 7/16
6" - R3291	388 25 06	6"	6"	20 1/16	19 3/4	15 3/4	19 3/4	23 1/8	15 3/4	7 7/8	6 7/8	22.5°	45° x 8	9 21/16
6" - 3127(L), 3301, 3315	604 66 06	6"	6"	15 5/16	11 1/8	10	12 3/16	15 3/8	18	10 1/8	4 9/16	22.5°	45° x 8	9 7/16

Note: Alternative discharge connections may be available, contact Flygt Application Engineering.

Caution: Contact Flygt applications engineering department when making a pump/discharge connection combination other than those paired in the chart above.

Note: The discharge connection shown here is typical in appearance for most pumps.

FLYGT a xylem brand

Issued: 4/04 Supersedes: 4/03

Upper Guide Bar Bracket (for 3000 Series Pumps)

Standard for the following pumps:
 CP/DP-3045
 CP/DP-3057
 CP/DP-3060
 CP-3068
 MP-3088
 MP-3102
 NP-3127

3/4" UPPER GUIDE BAR BRACKET
 669 77 00 316 Stainless Steel
 For use with 3/4" nominal guide bars

MOUNTING HARDWARE
 14-59 00 00 (stainless steel)
 3/8" PLAIN WASHER (2)
 14-46 50 07
 3/8" LOCK WASHER (2)
 14-46 50 67
 3/8" PLAIN NUT
 14-46 50 07
 HEX HEAD BOLT (2)
 3/8" x 7/8"
 14-46 20 25

OPTIONAL:
 NUT RAIL FEATURE

FLYGT a xylem brand

Issued: 9/11 Supersedes: 8/10

Upper Guide Bar Bracket (for 3000, 5500 & 8000 Series Pumps)

Standard for the following pumps:
 DP-3088
 DP-3090
 CP/DP/FP/NP-3085
 CP/FP/NP-3102
 CP/FP/NP-3127
 NP/FP-3153
 NP/FP-3171
 HP-5520, 5530
 DP-8050, 8053, 8056, 8058

2" UPPER GUIDE BAR BRACKET
 613 68 00 Galvanized Steel
 613 68 04 316 Stainless Steel

14-59 00 00 (stainless steel)
 3/8" PLAIN WASHER (2)
 14-46 50 07
 3/8" LOCK WASHER (2)
 14-46 50 67
 3/8" PLAIN NUT
 14-46 50 07
 HEX HEAD BOLT (2)
 3/8" x 7/8"
 14-46 20 25

OPTIONAL:
 NUT RAIL FEATURE

Note: use with 2" nominal guide bars

3" UPPER GUIDE BAR BRACKET
 661 54 00 Galvanized Steel
 661 54 01 316 Stainless Steel

14-59 00 00 (stainless steel)
 3/8" PLAIN WASHER (2)
 14-46 50 07
 3/8" LOCK WASHER (2)
 14-46 50 67
 3/8" PLAIN NUT
 14-46 50 07
 HEX HEAD BOLT (2)
 3/8" x 7/8"
 14-46 20 25

OPTIONAL:
 NUT RAIL FEATURE

Note: use with 3" nominal guide bars

This drawing is proprietary and may not be copied or used in any way without the written permission of FC Cuny Corporation - © Copyright - FC Cuny Corporation

RECORD DRAWING