

CURVE	RADIUS	DELTA	TANGENT	LENGTH	CHORD	BEARING	P.C.	P.T.
C-1	100.00'	275°41'	24.84'	48.71'	48.22'	S 31°30'2" E	0+62.05	1+10.76
C-2	70.00'	30°00'0"	18.76'	36.65'	36.24'	S 87°44'08" W	2+89.31	3+25.96
C-6	100.00'	03°67'65"	6.05'	12.07'	12.07'	N 71°22'13" E	5+01.56	5+13.64
C-7	70.00'	05°24'45"	6.63'	13.22'	13.21'	N 74°49'49" E	7+18.06	7+31.28

NOTE:  
CONTRACTOR TO PROVIDE EROSION CONTROL PER SWPP PLAN. FLEX TERRA TO BE INSTALLED IN AREAS OF DISTURBANCE. SW3P ITEMS MUST STAY IN PLACE UNTIL 70% VEGETATIVE COVER HAS BEEN ESTABLISHED.

**CAUTION EXISTING UTILITIES !!!**  
EXISTING UTILITIES AND UNDERGROUND FACILITIES INDICATED ON THESE PLANS HAVE BEEN LOCATED FROM REFERENCE INFORMATION. IT SHALL BE THE RESPONSIBILITY OF THE CONTRACTOR TO VERIFY BOTH HORIZONTALLY AND VERTICALLY THE LOCATION OF ALL EXISTING UTILITIES AND UNDERGROUND FACILITIES PRIOR TO CONSTRUCTION. TO TAKE THE NECESSARY PRECAUTIONS IN ORDER TO PROTECT ALL FACILITIES ENCOUNTERED, THE CONTRACTOR SHALL PRESERVE AND PROTECT ALL EXISTING UTILITIES FROM DAMAGE DURING CONSTRUCTION.

**BENCHMARK:**  
CITY OF ROCKWALL MONUMENT, N.W. CORNER OF INLET ON LAKEVIEW TRAIL AT SUMMER LEE.  
N 7013358.3381  
E 2588850.5919  
ELEV. 469.06

24" RCP  
Q = 28.75 cfs  
s = 0.016 ft/ft  
v = 8.23 fps  
hv = 1.32 ft  
Qcap = 68.46 cfs

18" RCP  
Q = 5.11 cfs  
s = 0.0052 ft/ft  
v = 1.64 fps  
hv = 0.42 ft  
Qcap = 30.71 cfs

7+80.00 LINE "A"  
END 18" RCP  
CONST. TYPE II S.E.T.

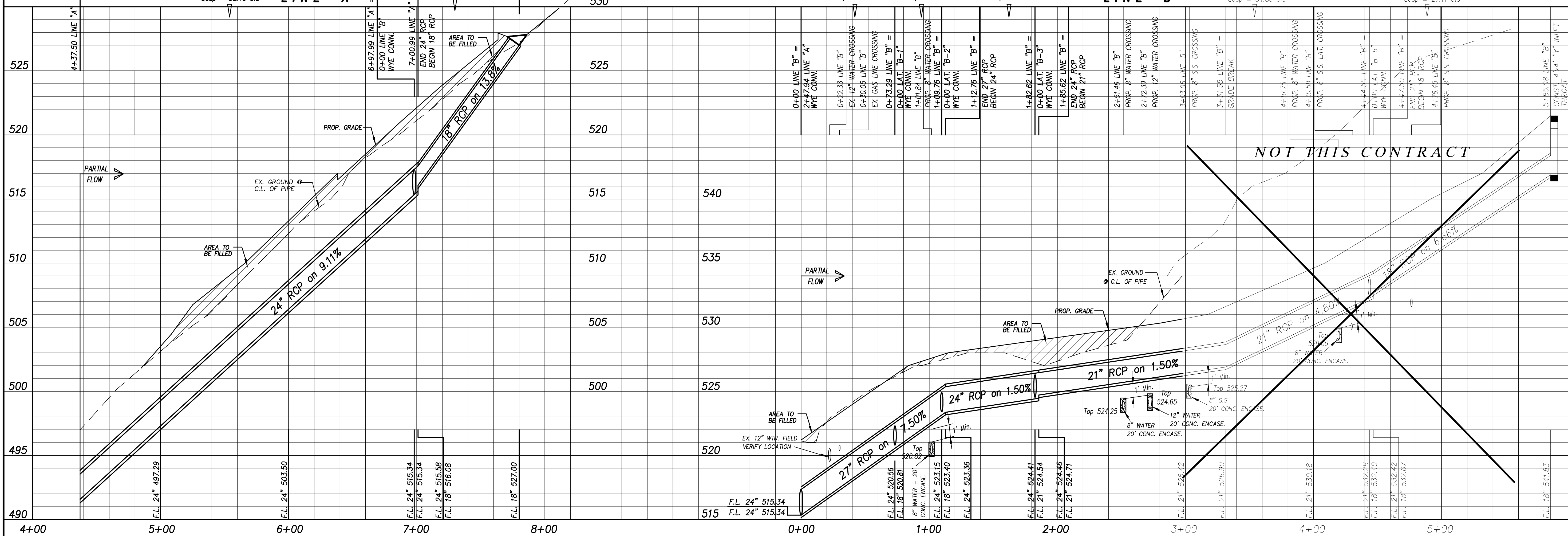
24" RCP  
Q = 23.84 cfs  
s = 0.0109 ft/ft  
v = 7.52 fps  
hv = 0.88 ft  
Qcap = 61.95 cfs

24" RCP  
Q = 13.67 cfs  
s = 0.0037 ft/ft  
v = 4.35 fps  
hv = 0.29 ft  
Qcap = 61.95 cfs

24" RCP  
Q = 12.35 cfs  
s = 0.0030 ft/ft  
v = 3.93 fps  
hv = 0.24 ft  
Qcap = 27.71 cfs

21" RCP  
Q = 6.35 cfs  
s = 0.0016 ft/ft  
v = 2.64 fps  
hv = 0.11 ft  
Qcap = 34.80 cfs

18" RCP  
Q = 3.62 cfs  
s = 0.0016 ft/ft  
v = 2.39 fps  
hv = 0.09 ft  
Qcap = 27.11 cfs



Revision	Date	Description

Owner: **CITY OF ROCKWALL**  
Developer: **Sterling One Construction L.L.C.**  
#2 Horizon Court • Heath, Texas 75032 • 469-772-9400

**Harbor District Infrastructure**  
Rockwall, Texas

~ Civil Engineer ~  
**F.C. CUNY CORPORATION**  
#2 Horizon Court • Heath, Texas 75032 • (469) 402-7700  
Texas Registered Engineering Firm F-1449



Drawn By: F.C. CUNY  
Checked By: F.C. CUNY  
Date: 08/11  
Project No.:  
Sheet Title: **Storm Sewer Plan & Profile Lines "A" & "B"**  
Scale: 1" = 40'  
Sheet No.: **12A of 21**