

CAUTION EXISTING UTILITIES !!!

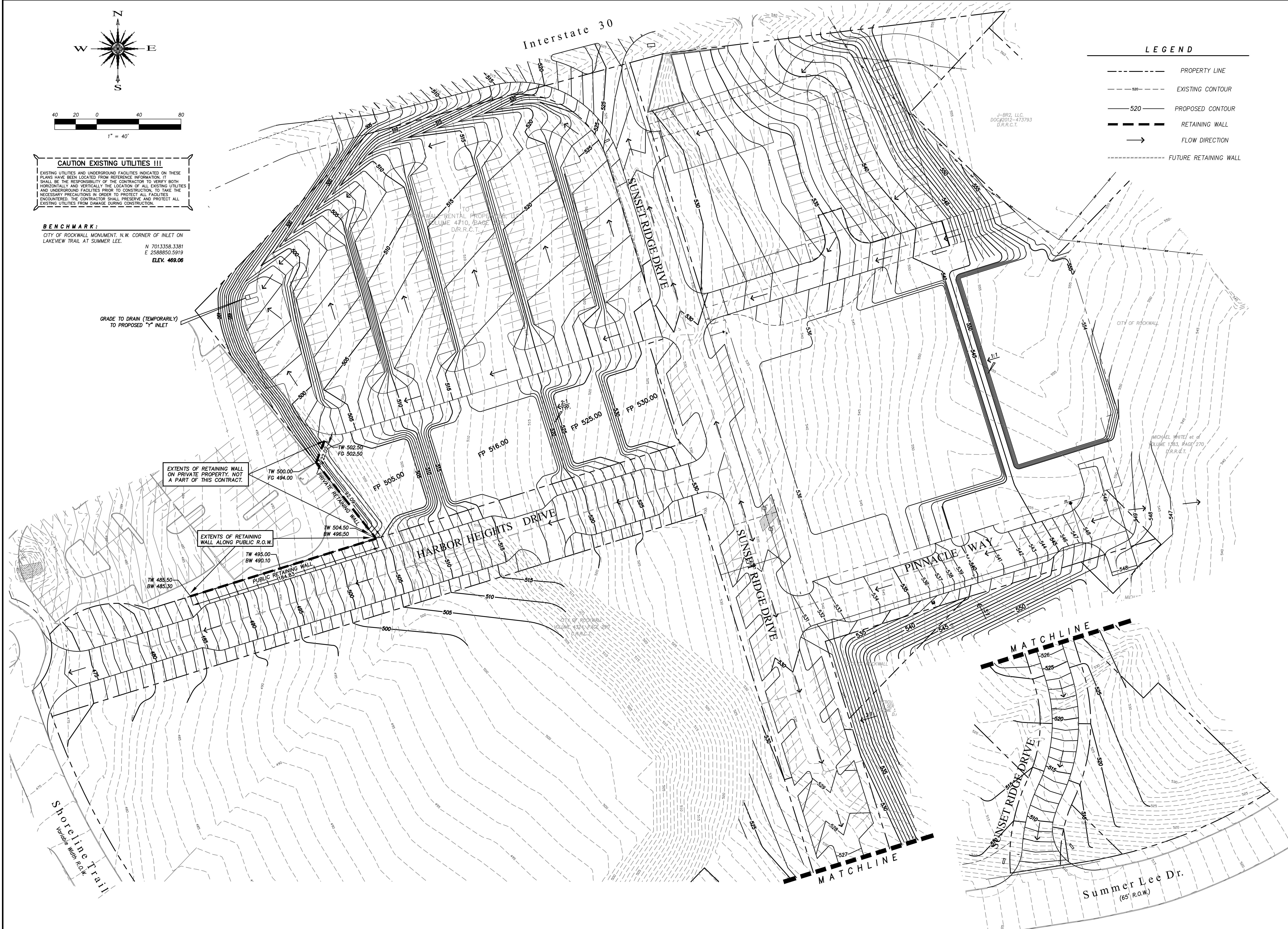
EXISTING UTILITIES AND UNDERGROUND FACILITIES INDICATED ON THESE PLANS HAVE BEEN LOCATED FROM REFERENCE INFORMATION. IT SHALL BE THE RESPONSIBILITY OF THE CONTRACTOR TO VERIFY BOTH HORIZONTALLY AND VERTICALLY THE LOCATION OF ALL EXISTING UTILITIES AND UNDERGROUND FACILITIES PRIOR TO CONSTRUCTION. TO TAKE THE NECESSARY PRECAUTIONS IN ORDER TO PROTECT ALL FACILITIES ENCOUNTERED. THE CONTRACTOR SHALL PRESERVE AND PROTECT ALL EXISTING UTILITIES FROM DAMAGE DURING CONSTRUCTION.

BENCHMARK:

CITY OF ROCKWALL MONUMENT, N.W. CORNER OF INLET ON LAKEVIEW TRAIL AT SUMMER LEE.
 N 7013358.3381
 E 2588850.5919
 ELEV. 469.06

LEGEND

- PROPERTY LINE
- - - - - EXISTING CONTOUR
- 520 — PROPOSED CONTOUR
- — — — — RETAINING WALL
- FLOW DIRECTION
- - - - - FUTURE RETAINING WALL



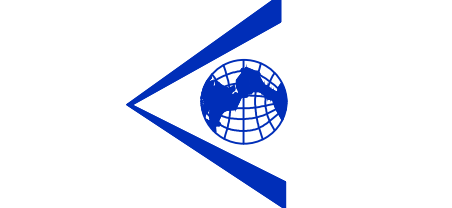
Revision	Date	Description

Owner:
CITY OF ROCKWALL

Developer:
Sterling One Construction L.L.C.
 #2 Horizon Court • Heath, Texas 75032 • 469-772-9400

Harbor District Infrastructure
 Rockwall, Texas

~ Civil Engineer ~
F.C. CUNY CORPORATION
 #2 Horizon Court • Heath, Texas 75032 • (469) 402-7700
 Texas Registered Engineering Firm F-7449



Drawn By: F.C. CUNY	Checked By: F.C. CUNY
Date: 08/11	Project No.:
Sheet Title:	

Grading Plan	
Scale: 1"=40'	Sheet No.:
	5 of 21

This drawing is proprietary and may not be copied or used in any way without the written permission of FC Cuny Corporation - © Copyright - FC Cuny Corporation

RECORD DRAWING