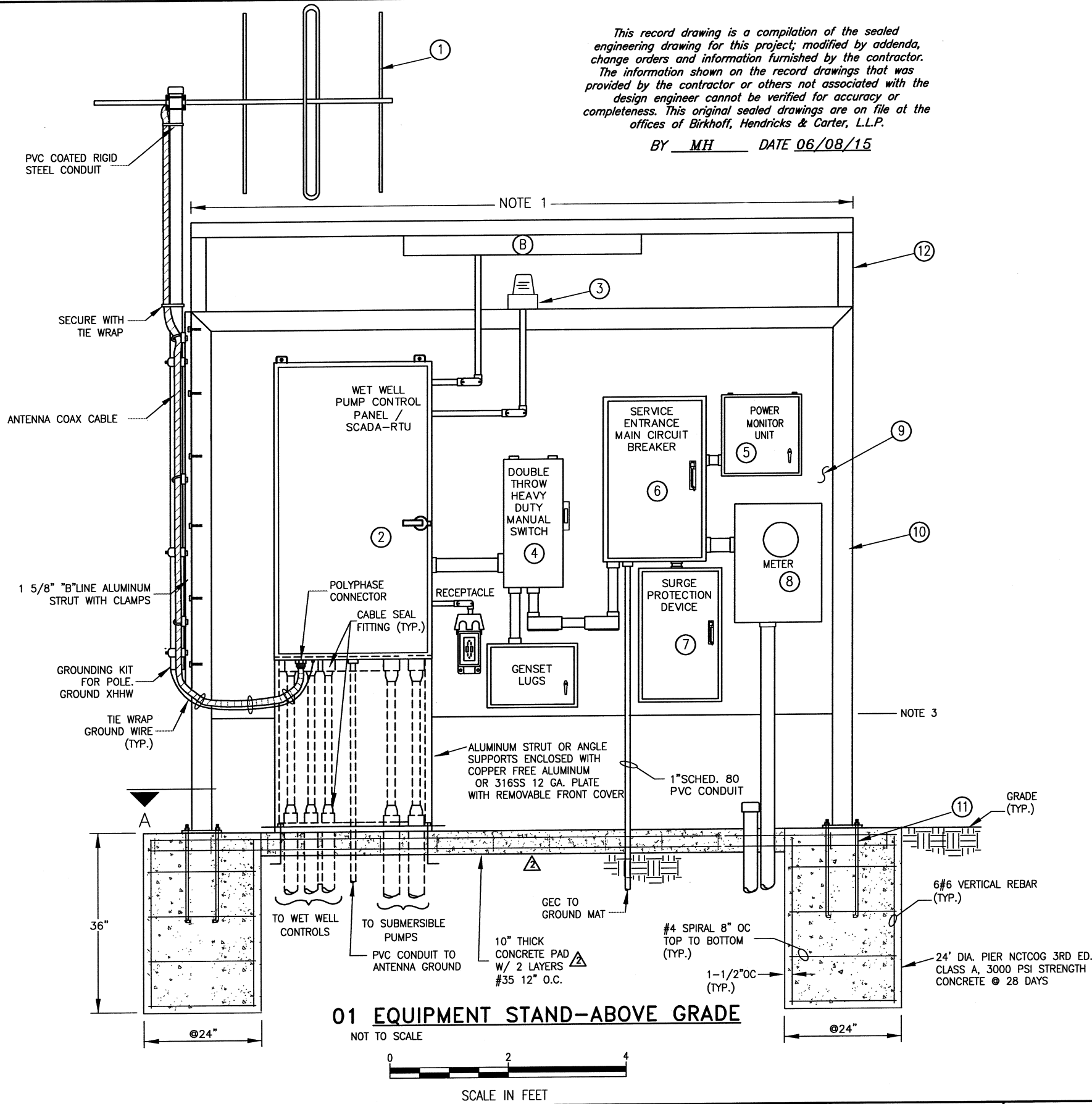
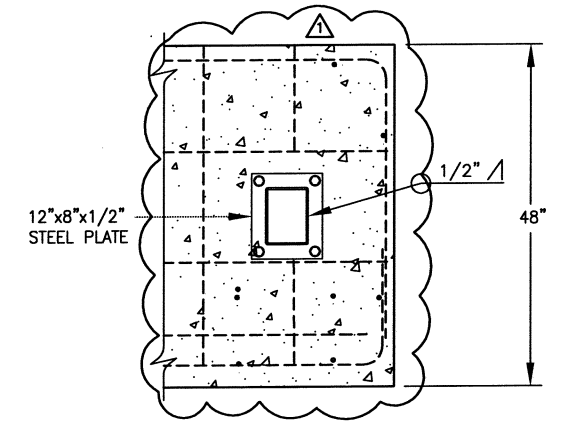


This record drawing is a compilation of the sealed engineering drawing for this project; modified by addenda, change orders and information furnished by the contractor. The information shown on the record drawings that was provided by the contractor or others not associated with the design engineer cannot be verified for accuracy or completeness. This original sealed drawings are on file at the offices of Birkhoff, Hendricks & Carter, L.L.P.

BY MH DATE 06/08/15



TAG	DESCRIPTION
①	WAVELINK PROFESSIONAL GRADE YAGI (PR0152-8)
②	PUMP WET WELL CONTROL PANEL / SCADA-RTU PANEL
③	ALARM BEACON, (RED)
④	DOUBLE THROW HEAVY DUTY MANUAL SWITCH, NEMA 4X REFERENCE SPECIFICATIONS (TRANSFER TO PORTABLE GENSET)
⑤	ENCLOSED POWER MONITOR UNIT - EATON 260 WITH TWO ANALOG OUTPUT CARDS IN 316 AA NEMA 4X ENCL.
⑥	ENCLOSED MAIN BREAKER - SERVICE ENTRANCE RATED 480V. 3 PHASE, 4W WITH S/N 200A HEAVY DUTY NEMA 4X.
⑦	SPD CURRENT TECHNOLOGY MODEL TG3-200-2403GHD-SDT-M2-F
⑧	200 AMP METER (ONCOR)
⑨	3/8" HOT DIPPED GALVANIZED STEEL BACK PANEL
⑩	8"x4" HOT DIPPED GALVANIZED STEEL RECTANGULAR TUBING FRAME.
⑪	1/2"x8" HOT DIPPED GALVANIZED ANCHOR BOLTS W/ STAINLESS STEEL NUTS, FLAT WASHERS AND LOCK WASHERS. TYPICAL FOR 8.
⑫	AWNING, SEE DETAILS SHEET 23



- NOTES:**
1. SIZE OF RACK VARIES WITH ELECTRICAL EQUIPMENT SIZED BY VENDOR.
  2. EQUIPMENT SHALL BE MINIMUM 2' ABOVE THE SLAB.
  3. BOTTOM OF ENCLOSURE SHALL BE MINIMUM 3.5 FEET ABOVE CONCRETE PAD.
  4. RTU SHALL BE PROVIDED BY CITY SYSTEM INTEGRATOR.

<p>CHANGE ORDER 12/9/2014 - ADDED CONCRETE PAD</p>	<p>These plans and related specifications were prepared for construction of this specific project only. Reuse of these documents is not permitted without written authorization of Birkhoff, Hendricks &amp; Carter, L.L.P. If this drawing is converted to an electronic file, if any discrepancy occurs between the electronic file and the Birkhoff, Hendricks &amp; Carter, L.L.P. original document, the original document will govern in all cases.</p>	<p><b>BIRKHOFF, HENDRICKS &amp; CARTER, L.L.P.</b> PROFESSIONAL ENGINEERS Texas Firm F526 11910 Greenville Ave., Suite 600 Dallas, Texas 75243 (214) 361-7900</p>		<p><i>Andrew Mata, Jr.</i> 1/2/14</p>	<p><b>CITY OF ROCKWALL, TEXAS</b> NORTHSHORE LIFT STATION</p>	<p>BHC PROJECT NO. 2013-119</p>	<p>SHEET NO. <b>24</b></p>
					<p>ELECTRICAL DETAILS III</p>	<p>January 2014</p>	