

CAUTION !!
 UNDERGROUND GAS MAIN IN THIS AREA. CONTACT JOE CABEZUELA w/ LONE STAR GAS COMPANY • (214) 573-8716 PRIOR TO CONSTRUCTION IN THIS AREA.

NOTE :
 CONTACT BRIAN HUGHES W/ TU ELECTRIC COMPANY @ (214)216-8984 AND DALE INGERSOLL W/ SOUTHWESTERN BELL TELEPHONE COMPANY @ (214)320-6437 PRIOR TO CONSTRUCTION IN THIS AREA.

0+00 LN. A ~ REMOVE EXIST. 24" RCP & CONN. TO EXIST. 30" RCP & BEGIN PROP. 30" Ø RCP

Remove & Dispose of 142 L.F. of Exist. 24" RCP

Saw - Cut, Remove & Replace 58 S.Y.'s of Conc. Alley Paving

Remove & Dispose of Exist. 24" Ø Type Hdw.

Cut & Plug Exist. 24" RCP

1+71.48 LN. A ~ END 30" RCP & BEGIN 27" RCP & CONST. 5' X 5' CONC. JUNCTION BOX W/ TYPE "Y" INLET IN TOP OF BOX TOP = 541.55; THROAT = 540.05

CONST. 10' CURB INLET W/ 10 L.F. OF 6" CONC. CURB ON EACH SIDE OF INLET T.C. = 541.86; F.L. = 537.86

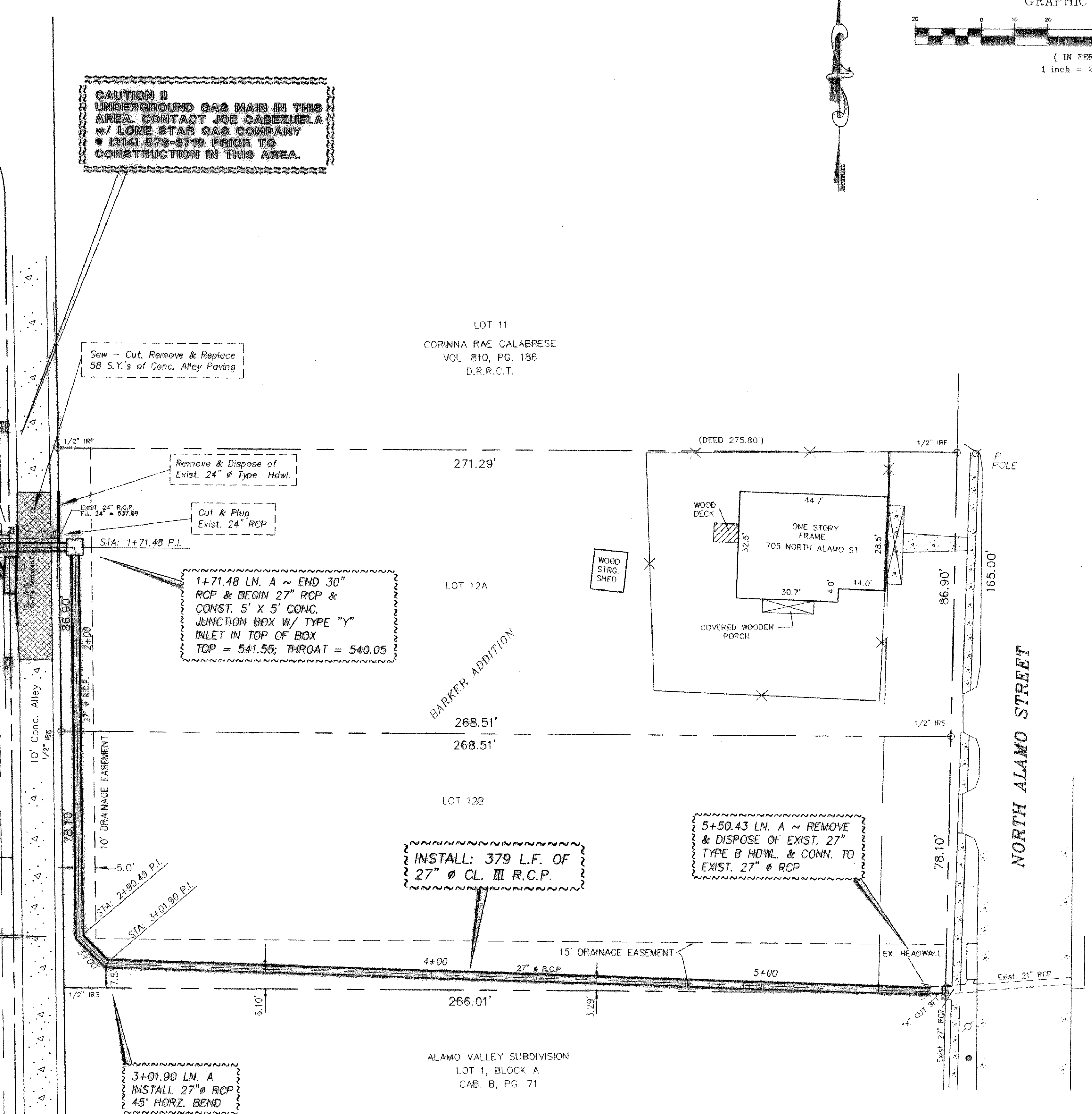
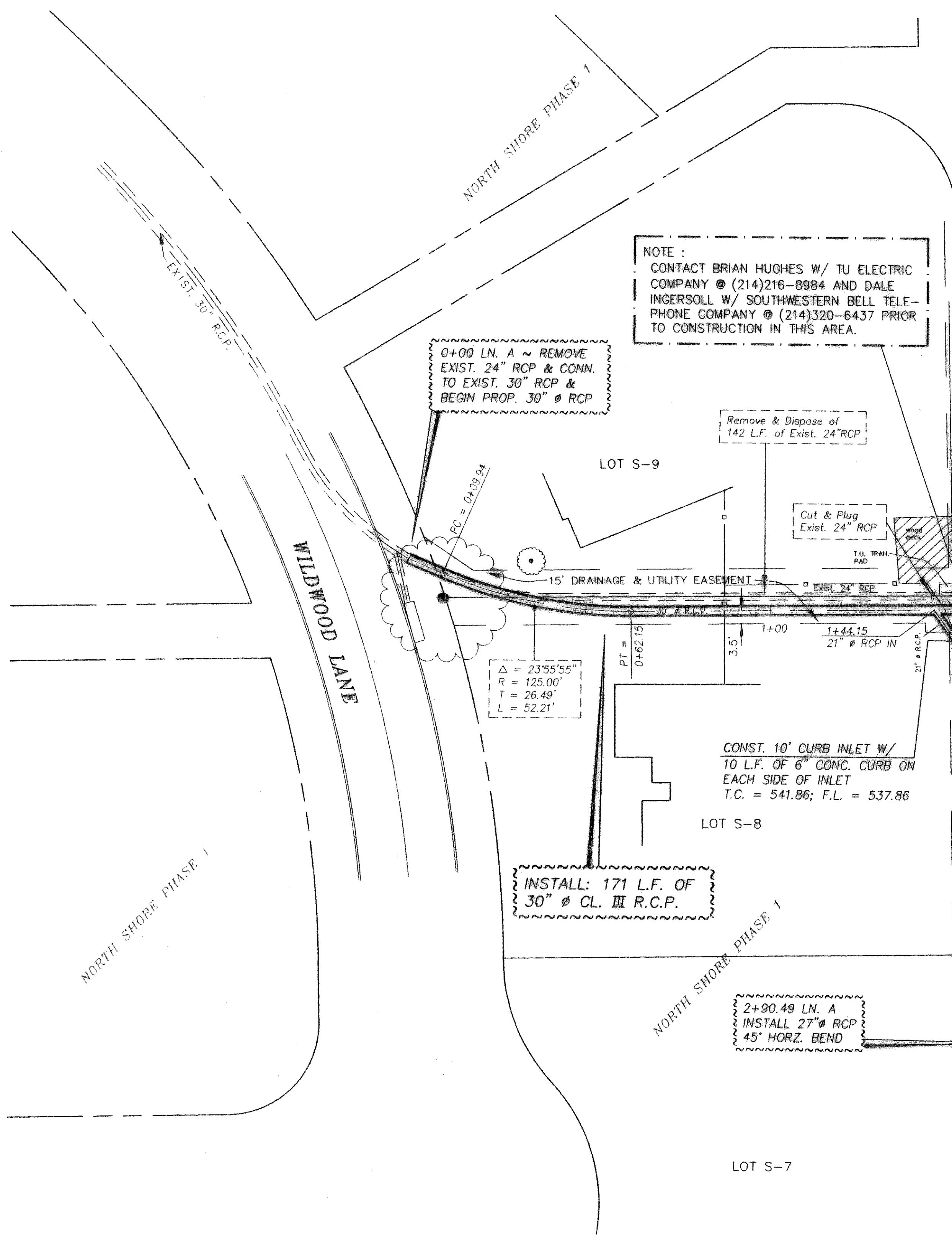
INSTALL: 171 L.F. OF 30" Ø CL. III R.C.P.

2+90.49 LN. A INSTALL 27" Ø RCP 45° HORZ. BEND

3+01.90 LN. A INSTALL 27" Ø RCP 45° HORZ. BEND

5+50.43 LN. A ~ REMOVE & DISPOSE OF EXIST. 27" TYPE B HDWL. & CONN. TO EXIST. 27" Ø RCP

INSTALL: 379 L.F. OF 27" Ø CL. III R.C.P.



DRAINAGE IMPROVEMENTS
NORTHSHORE ADDITION PHASE 1
ROCKWALL, TEXAS
 CITY OF ROCKWALL
 "THE NEW HORIZON"

REVISION NO	REMARKS	DATE

DESIGNED: B.W.H.
 DRAWN: ACAD
 JOB NO.:
 DATE: 8/21/95
 SHEET NO.: 2 OF 3

