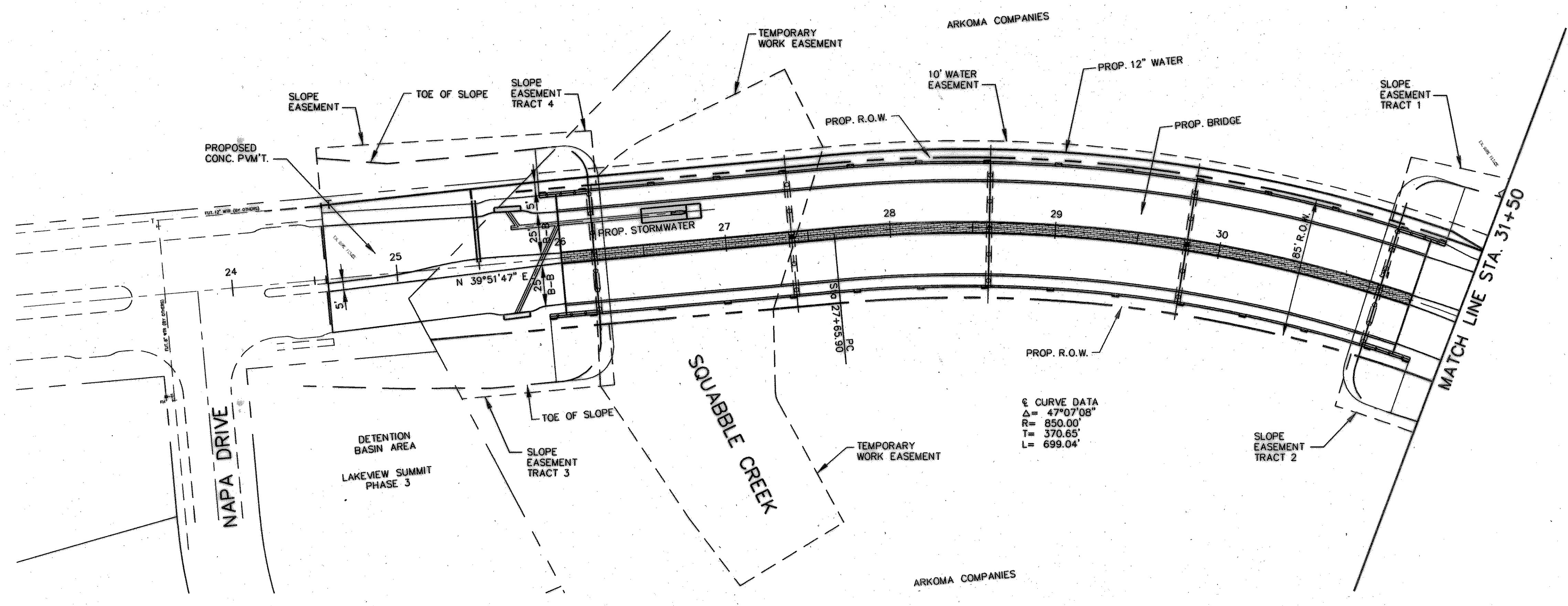


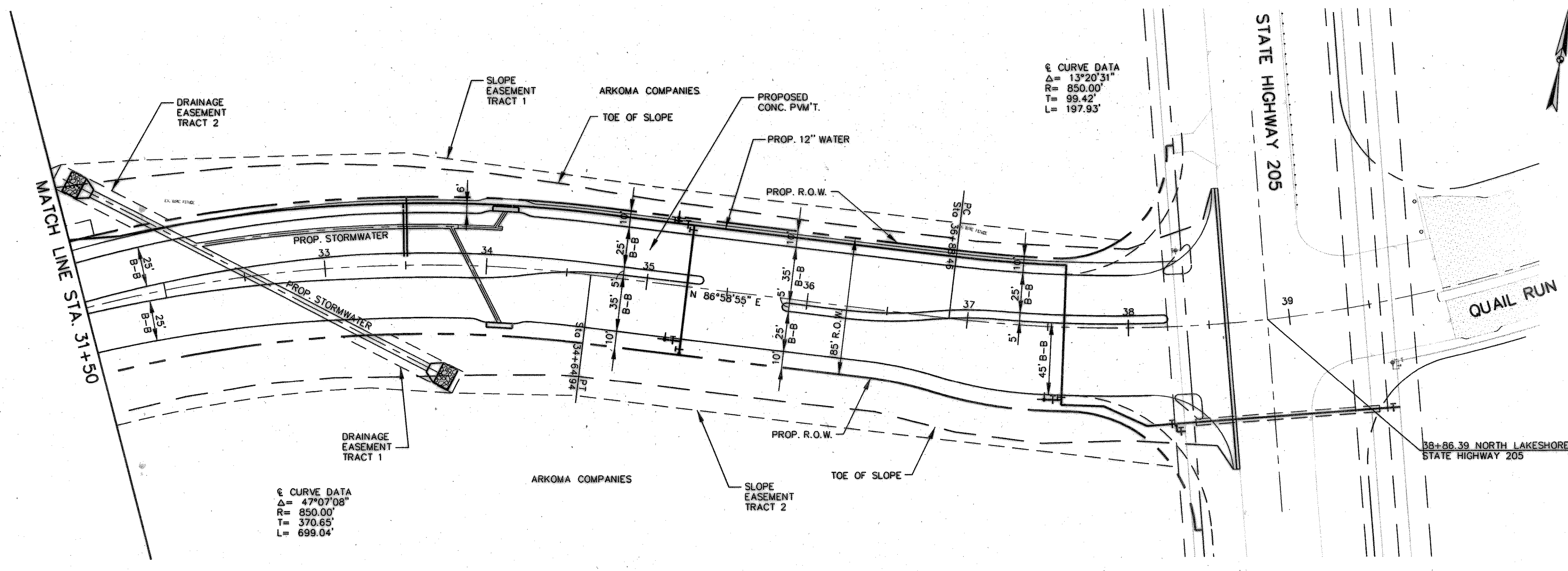
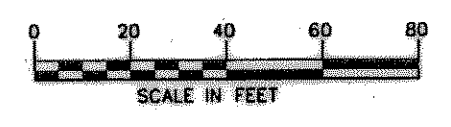
CROWN1, 335401CRW1.DGN, 1,3-47,49-63
 VFIELD1, 335401VTR1.DGN, 1-3,5,9,11-13,15-21,23-35,37-41,44,45,50-53,55,56,60-63
 SURV, 335403.DGN, 5-63
 CSPLANT, 335403CSTR.DGN, 1-14,16,18-20,31-41,43-56,58-62
 BORDER, 335403BDR.DGN, 1-4,6,7,20,21,30,31,40,41,45-48,50-52
 CHALIGN1, 335401CHAL1.DGN, 1,2,4-5,7,59-63
 TERRICE2, 335401TERR1.DGN, 2-63

theresso
 SCALE=40.000000
 PRF ROTATION=45.000000
 f:\m\vh\jfull.tbl

h:\proj\01335401\den\335401CRW01.DGN
 DATE: 1/9/2006
 TIME: 15:07:02



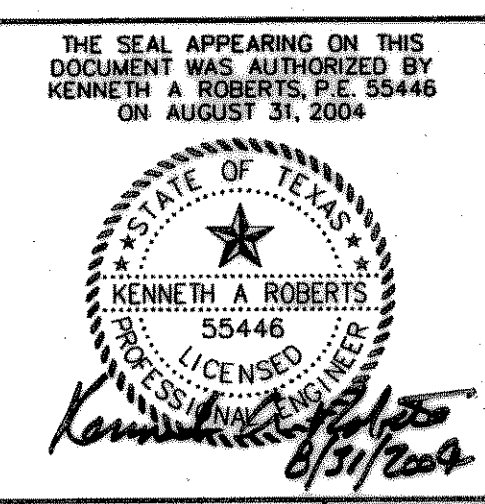
& CURVE DATA
 $\Delta = 47^{\circ}07'08''$
 $R = 850.00'$
 $T = 370.65'$
 $L = 699.04'$



& CURVE DATA
 $\Delta = 47^{\circ}07'08''$
 $R = 850.00'$
 $T = 370.65'$
 $L = 699.04'$

& CURVE DATA
 $\Delta = 13^{\circ}20'31''$
 $R = 850.00'$
 $T = 99.42'$
 $L = 197.93'$

RECORD DRAWINGS JANUARY 12, 2006 *KAR*
 THIS RECORD DOCUMENT HAS BEEN PREPARED BASED ON INFORMATION PROVIDED BY OTHERS. THE CONSULTANT HAS NOT VERIFIED THE ACCURACY AND/OR COMPLETENESS OF THIS INFORMATION AND SHALL NOT BE RESPONSIBLE FOR ANY ERRORS OR OMISSIONS THAT MAY BE INCORPORATED AS A RESULT OF ERRONEOUS INFORMATION PROVIDED BY OTHERS.



| NO. | DATE | REVISIONS | APPROVED |
|-----|------------|-------------------------|------------|
| 1 | 12/20/2004 | MEDIAN OPENING REVISION | <i>KAR</i> |

ROW AND EASEMENT EXHIBIT
NORTH LAKESHORE DRIVE
NAPA DRIVE TO S.H. 205

HUITT-ZOLIARS Huitt-Zoliars, Inc. Dallas
831 McKinney Avenue, Suite 600
 Dallas, Texas 75204-2489
 Phone (214) 871-3391 Fax (214) 871-0757

| DESIGN | DRAWN | APPR. | SCALE | DATE | PROJECT NO. | NO. |
|--------|-------|-------|--------|-------------|-------------|-----|
| HZI | HZI | KAR | 1"=40' | AUGUST 2004 | 01-3354-01 | R-1 |