

1 SCALE, 1987BR31.00B, 1-62
 1 1/2 SCALE, 1987BR31.00B, 1-62
 "no ref levels"
 "no ref logical", "no ref name", "no ref levels"
 "no ref logical", "no ref name", "no ref levels"
 "no ref logical", "no ref name", "no ref levels"
 "no ref logical", "no ref name", "no ref levels"

BORDER, 335401GBDR1.DGN, 1-4.6.7.20-30.32.34-45.47-59.61.62
 1/4 SCALE, 335401TBU02.DGN, 1-62
 3 SCALE, 1987BR31.00B, 1-62
 3/8 SCALE, 335401TBU02.DGN, 1-62
 1/2 SCALE, 335401TBU02.DGN, 1-62
 3/4 SCALE, 1987BR31.00B, 1-62

theressa
 SCALE=8.000021
 PRF ROTATION=90.000000
 f:\b\h\z\full\tbl

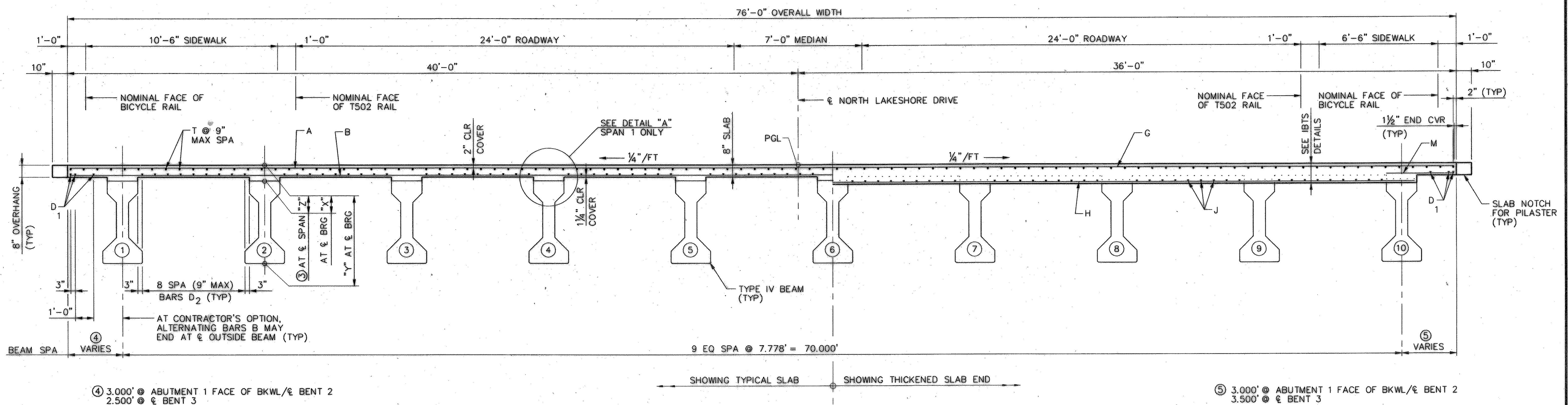
| SPAN NO. | BEAM NO. | "X" AT \bar{C} BRG | "Y" AT \bar{C} BRG | "Z" AT \bar{C} SPAN |
|----------|----------|----------------------|----------------------|-----------------------|
| 1 | ALL | 11 1/4" | 5'-5 1/4" | 8 1/2" |
| 2 | ALL | 11" | 5'-5" | 8 3/8" |
| | | | | |
| | | | | |
| | | | | |

③ THEORETICAL DIMENSION

| BAR | SIZE |
|-----|------|
| A | #5 |
| B | #5 |
| D | #5 |
| G | #5 |
| H | #5 |
| J | #5 |
| M | #5 |
| P | #4 |
| T | #4 |

| SPAN | REINF CONCRETE SLAB 4000 PSI | ① PRESTR CONCRETE BEAMS (TY IV) | CLASS "S" CONCRETE | ② REINF STEEL |
|-------|------------------------------|---------------------------------|--------------------|---------------|
| No. | SF | LF | CY | Lb |
| 1 | 9120 | 1196.70 | 234.6 | 59,280 |
| 2 | 9137 | 1198.45 | 235.0 | 59,390 |
| TOTAL | 18,257 | 2395.15 | 469.6 | 118,670 |

① LENGTHS SHOWN ARE BOTTOM FLANGE LENGTHS WITH ADJUSTMENTS MADE FOR BEAM SLOPE. SEE BEAM LAYOUT FOR BEAM LENGTHS, BEAM SPACING, AND BEAM ANGLES.
 ② REINFORCING STEEL WEIGHT IS CALCULATED USING AN APPROXIMATE FACTOR OF 6.5 LBS/SF.

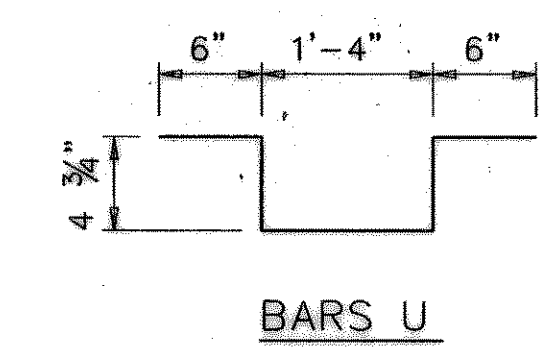


④ 3.000' @ ABUTMENT 1 FACE OF BKWL/€ BENT 2
 2.500' @ € BENT 3

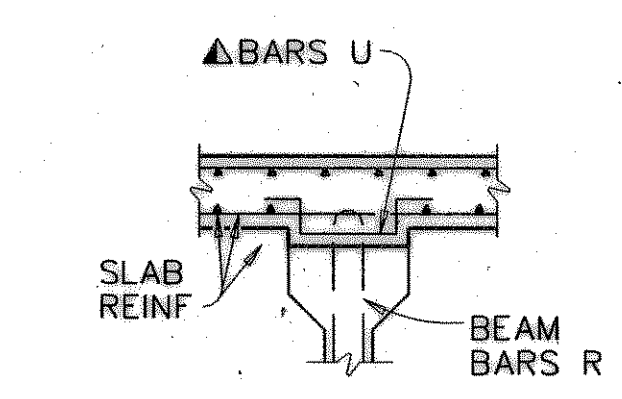
⑤ 3.000' @ ABUTMENT 1 FACE OF BKWL/€ BENT 2
 3.500' @ € BENT 3

TYPICAL SECTION
 SCALE: 3/8" = 1'-0"

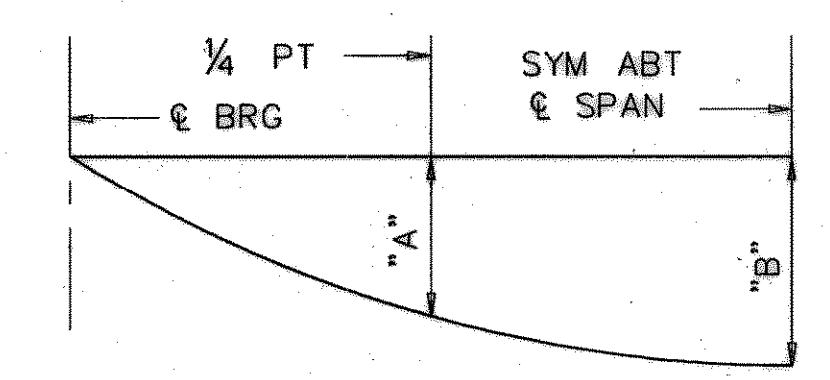
| SPAN NO. | BEAM NO. | "A" | "B" |
|----------|----------|--------|--------|
| 1 | ALL | 0.156' | 0.222' |
| 2 | ALL | 0.181' | 0.254' |



▲ BARS U SHALL MATCH ALL BARS R IN ALL BEAMS IN SPAN 1.



DETAIL "A"



NOTE: DEFLECTIONS SHOWN ARE DUE TO CONCRETE SLAB ONLY. ($E_c = 5 \times 10^6$ PSI)
 CALCULATED DEFLECTIONS SHOWN ARE THEORETICAL AND ACTUAL DIMENSIONS MAY BE LESS. DEFLECTIONS SHALL BE ADJUSTED BASED ON FIELD OBSERVATIONS.

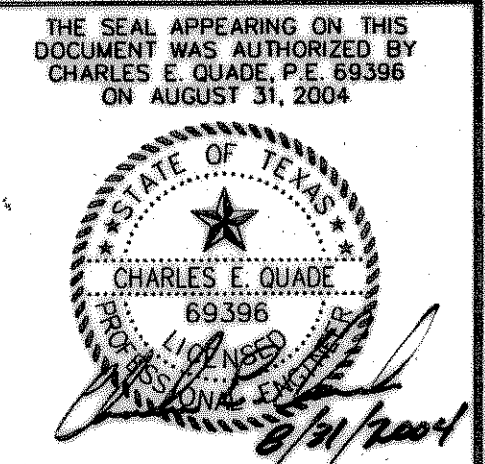
DEAD LOAD DEFLECTION DIAGRAM

GENERAL NOTES:

- DESIGNED ACCORDING TO AASHTO 2002 STANDARD AND CURRENT INTERIM SPECIFICATIONS.
- CLASS "S" CONCRETE STRENGTH $F'_C = 4,000$ PSI.
- ALL REINFORCING STEEL SHALL BE GRADE 60.
- SEE TXDOT IBTS STANDARD FOR THICKENED SLAB END DETAILS AND QUANTITY ADJUSTMENTS.
- SEE TXDOT PCP(C) OR PMDF(C) STANDARDS FOR DETAILS AND QUANTITY ADJUSTMENTS IF EITHER OF THESE OPTIONS ARE USED.
- SEE TXDOT SEALED EXPANSION JOINT STANDARD SHEET, SEJ-A, FOR ALL DETAILS AND LENGTHS.
- BAR LAPS WHERE REQUIRED, SHALL BE AS FOLLOWS:

#4 = 1'-5"
 #5 = 1'-9"

RECORD DRAWINGS JANUARY 12, 2006
 THIS RECORD DOCUMENT HAS BEEN PREPARED BASED ON INFORMATION PROVIDED BY OTHERS. THE CONSULTANT HAS NOT VERIFIED THE ACCURACY AND/OR COMPLETENESS OF THIS INFORMATION AND SHALL NOT BE RESPONSIBLE FOR ANY ERRORS OR OMISSIONS THAT MAY BE INCORPORATED AS A RESULT OF ERRONEOUS INFORMATION PROVIDED BY OTHERS.



| NO. | | DATE | REVISIONS | APPROVED | | |
|--|-------|-------|-----------|-------------|-------------|------|
| | | | | | | |
| 240.00' PRESTRESSED CONC. BEAM UNIT 1 | | | | | | |
| NORTH LAKESHORE DRIVE | | | | | | |
| NAPA DRIVE TO S.H. 205 | | | | | | |
| HUITT-ZOLLARS | | | | | | |
| CITY OF ROCKWALL, TEXAS | | | | | | |
| DESIGN | DRAWN | APPR. | SCALE | DATE | PROJECT NO. | NO. |
| HZI | HZI | CEG | AS SHOWN | AUGUST 2004 | 01-3354-01 | B-12 |