

These plans and related specifications were prepared for construction of this specific project only. Reuse of these documents is not permitted without written authorization of Birkhoff, Hendricks, & Conway, L.L.P.

LOWER EXISTING 12" WATER LINE AND CONSTRUCT 6" BLOW OFF WITH 6" VALVE, 12"x6" TEE AND 6" 45' BEND. BLOW OFF PIPE SHALL DISCHARGE INSIDE THE PROPOSED BOX STORM SEWER AND END WITH A 6" FLAP VALVE.

CONSTRUCT 56.2 L.F. 5'x3' BOX STORM SEWER WITH 2-30' BENDS REMOVE AND REPLACE EXIST. ASPHALT PAVEMENT, CONC. CURB AND GUTTER, AND CONC. DRIVE. CONNECT TO EXISTING STORM SEWER INLET.

STRIP EXISTING MATERIAL FROM ABOVE EXISTING 6" WATER LINE AND CONSTRUCT CONCRETE CAP OVER AND ALONG SIDES OF PIPE.

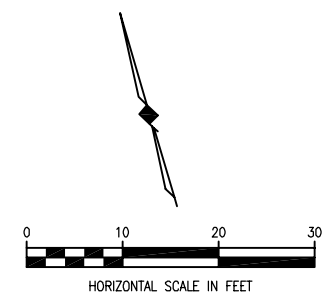
REMOVE EXISTING INLET. CONSTRUCT 10' CURB INLET. ADJUST LOCATION OF INLET AS NECESSARY TO AVOID CONFLICT WITH EXISTING BLOW OFF PIPE. CUT EXISTING 6" BLOW OFF PIPE, INSTALL NEW RESTRAINED 6" 90' BEND, 6" DIP AND 6" FLAP VALVE TO RELOCATED 6" BLOW OFF INTO NEW STORM WATER INLET.

CONSTRUCT 26 L.F. 5'x3' BOX STORM SEWER WITH 1-30' BEND AND NORMAL FLARED WINGWALLS (WS-S-N-3) WITH GALV. PIPE RUNNERS

STRIP EXISTING MATERIAL FROM ABOVE EXISTING 21" WATER LINE AND CONSTRUCT CRUSHED STONE CAP OVER PIPE 5" THICK AND 8" DEEP ALONG PIPE SIDES.

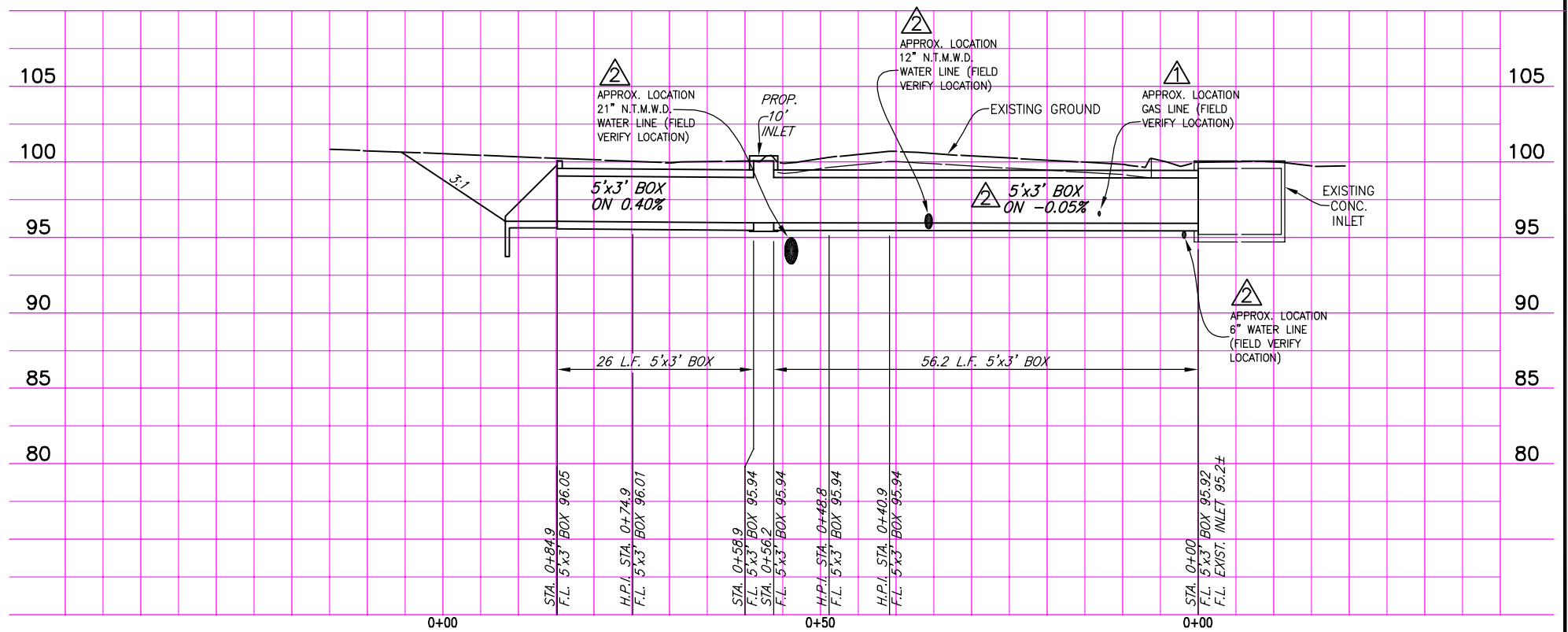
NOTE:
CONTRACTOR SHALL REMOVE TWO EXISTING 32' LONG JOINTS OF 12" RCCP AND LOWER 12" WATER LINE USING 12" MOTOR COATED (AWWA C104) DUCTILE IRON PIPE (AWWA C-151, CLASS 51) WITH RESTRAINED (MEGALUG) 45' FITTINGS. PIPE AND FITTINGS SHALL BE POLY WRAPPED (AWWA C105). EXPOSED STEEL SURFACES ON THE EXISTING 12" RCCP SHALL BE CEMENT MORTAR COATED.

T.B.M.:
CENTER OF INLET LID ON THE NORTH SIDE OF HEATH DRIVE. ELEV. 100.00

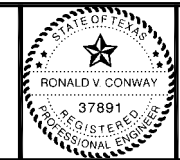


CITY OF ROCKWALL
&
NORTH TEXAS MUNICIPAL
WATER DISTRICT

This record drawing is a compilation of the sealed engineering drawing for this project, modified by addenda, change orders and information furnished by the contractor. The information shown on the record drawings that was provided by the contractor or others not associated with the design engineer cannot be verified for accuracy or completeness. This original sealed drawings are on file at the offices of Birkhoff, Hendricks & Conway, L.L.P.
BY RVC DATE 5/12/09



BIRKHOFF, HENDRICKS & CONWAY, L.L.P.
CONSULTING ENGINEERS
7502 Greenville Ave., Suite 220
Dallas, Texas
(214) 361-7900



Ronald V. Conway
5/23/07

CITY OF ROCKWALL, TEXAS
NEIGHBORHOOD DRAINAGE IMPROVEMENTS
DRAINAGE SITE 5 IMPROVEMENTS
HEATH STREET WEST OF FANNIN STREET

BHC
PROJECT NO.
2006-182
JANUARY, 2007

SHEET NO.
13

PLAN CLARIFICATION NO. 2 MAY 23, 2007
PLAN CLARIFICATION NO. 1 APRIL 26, 2007