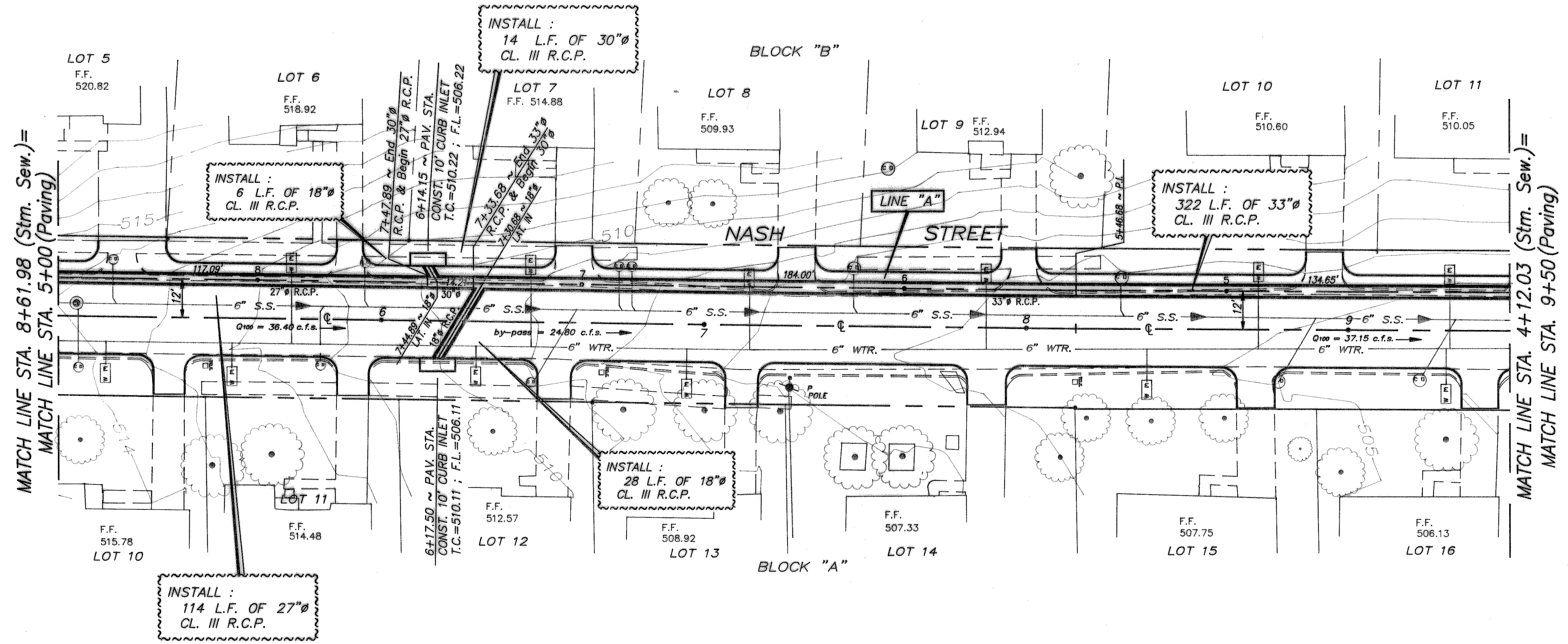


NOTE :
 Lots 5 - 11 in Block "B" are to have new sewer laterals & cleanouts installed after proposed storm sewer is in place.



BENCHMARK NO. 3 :
 R.R. SPIKE SET IN P/P @ EAST SIDE OF
 NASH STREET, 400' S. OF JACKSON ST.
 ACROSS FROM 817 NASH STREET
 ELEV. = 517.90

BENCHMARK NO. 4 :
 R.R. SPIKE SET IN P/P @ EAST SIDE OF
 NASH STREET AT THE OF NASH STREET
 & JOE WHITE INTERSECTION.
 ELEV. = 529.32

DRAINAGE IMPROVEMENTS
NASH STREET
ROCKWALL, TEXAS
 CITY OF ROCKWALL
 "THE NEW HORIZON"

REVISION NO.	REMARKS	DATE

DESIGNED: B.W.H.
 DRAWN: ACAB
 THE SEAL APPEARING ON THIS DOCUMENT WAS AUTHORIZED BY W.L. DOUPHRADE II TEXAS P.E. NO. 60102 ON 7/13/92
 6/15/92

