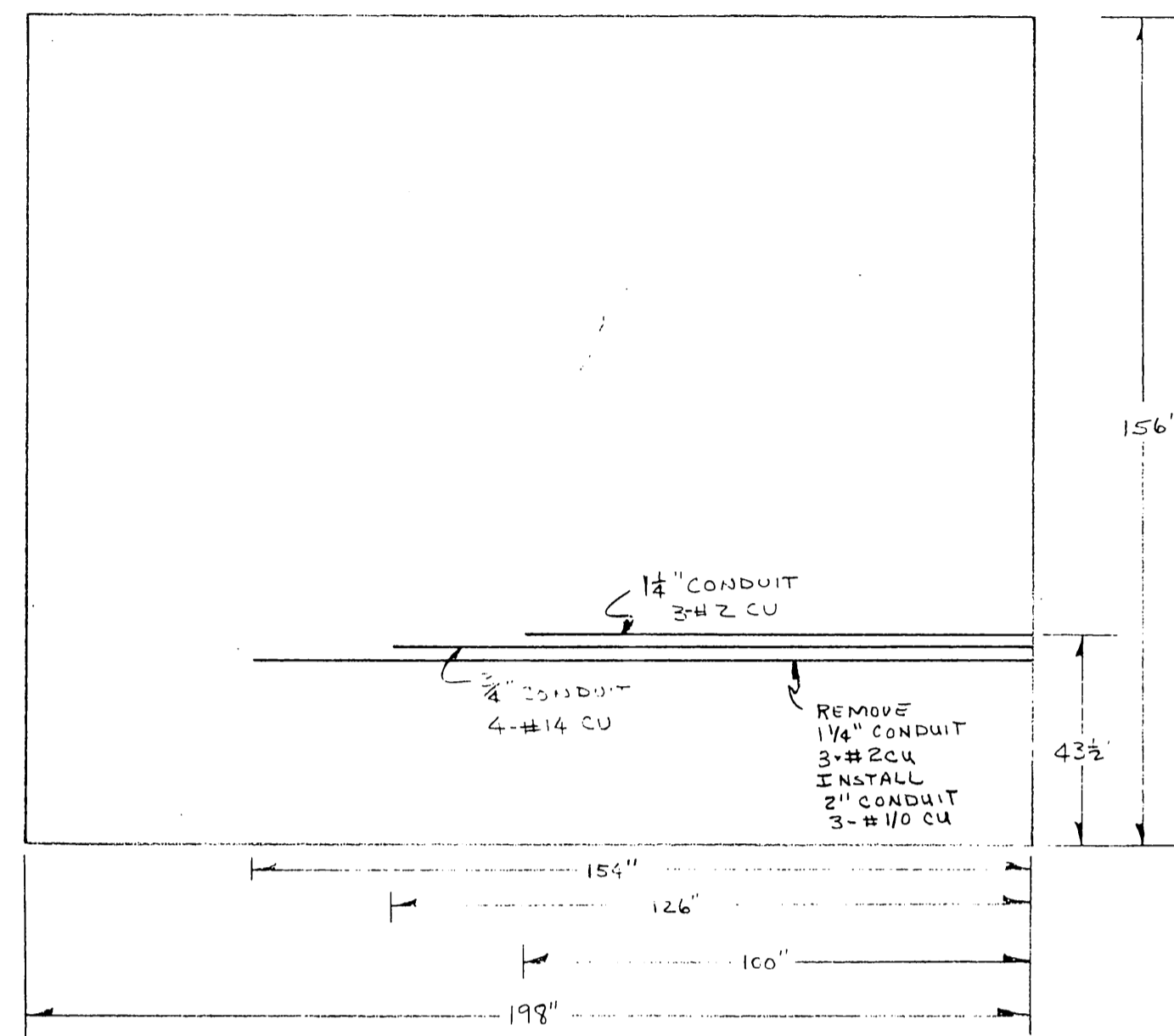
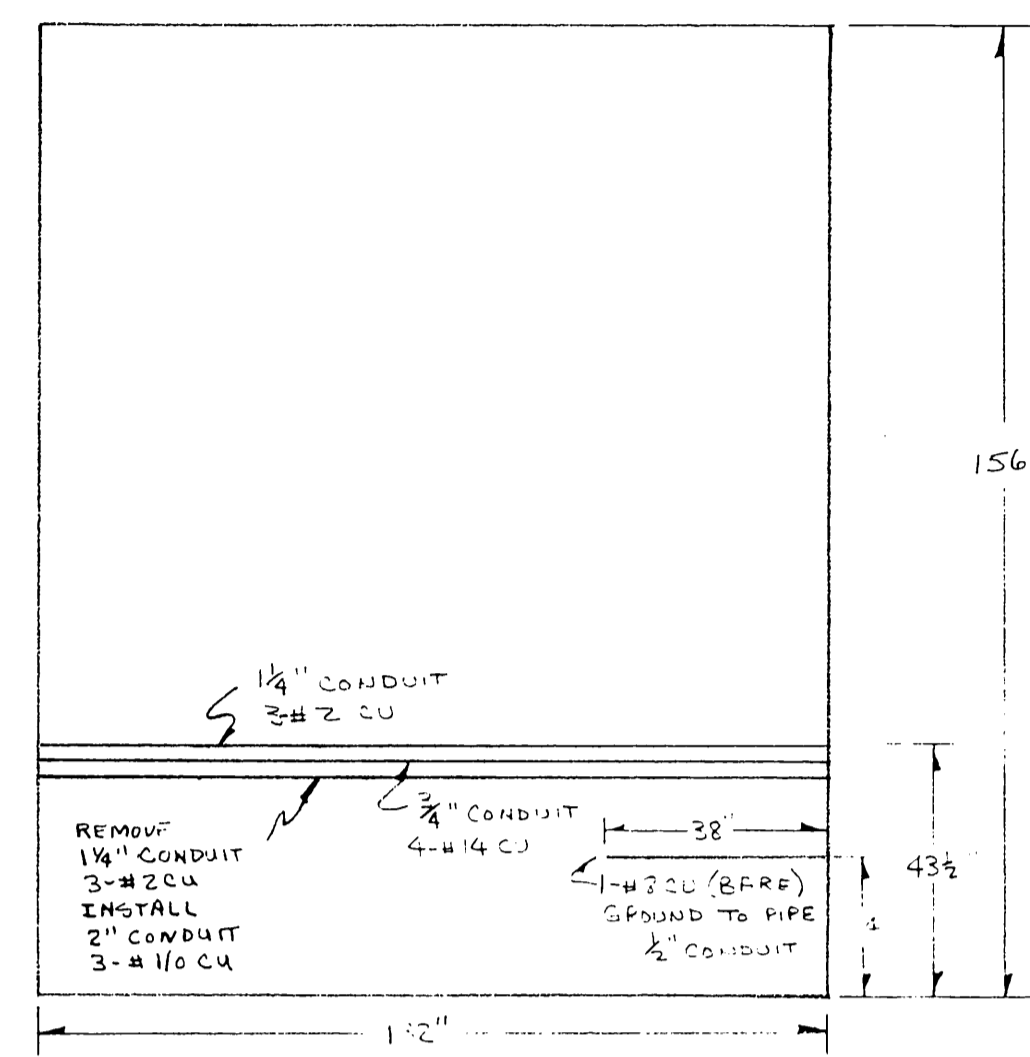


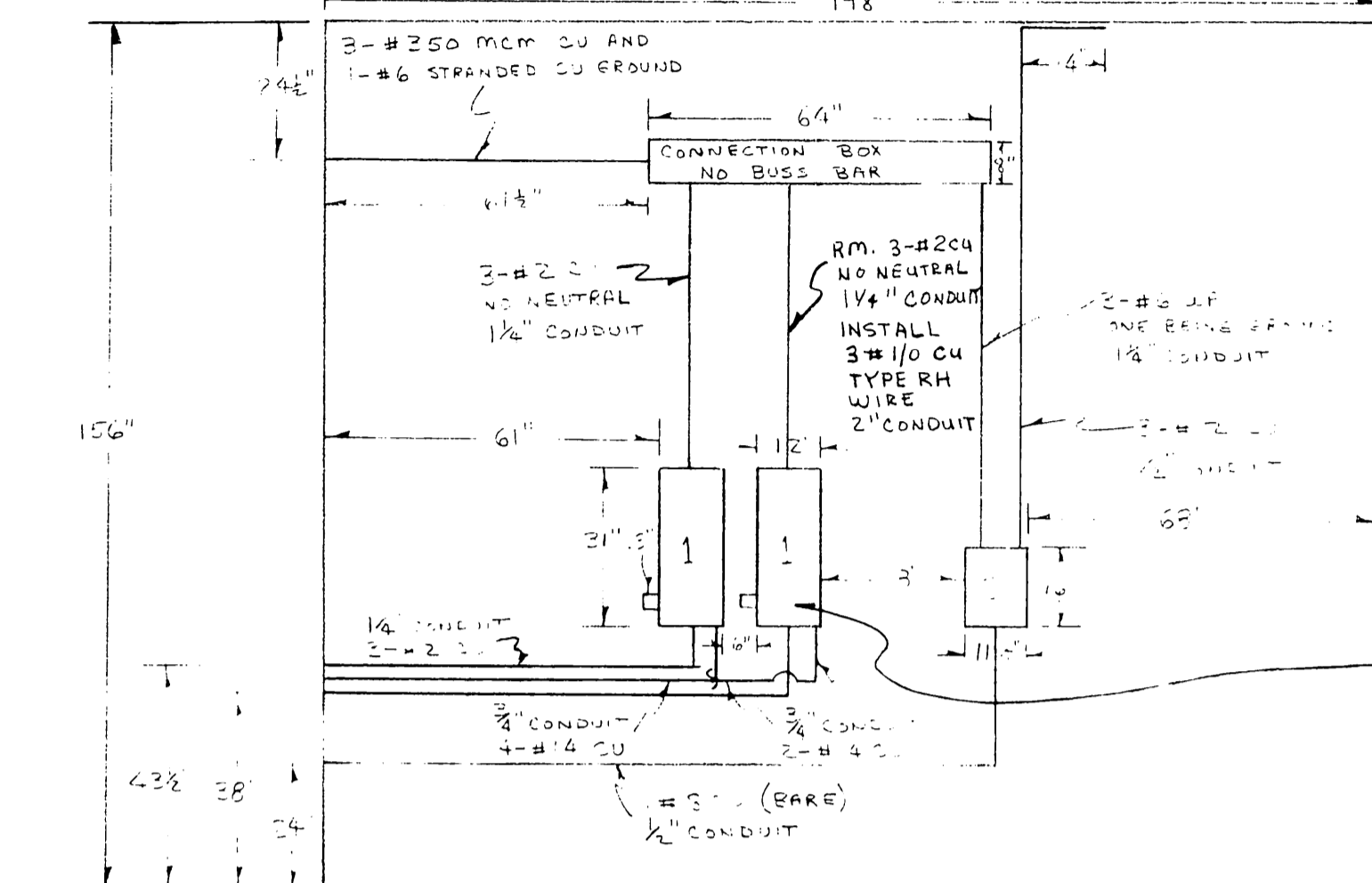
SECTION C-C



SECTION B-B



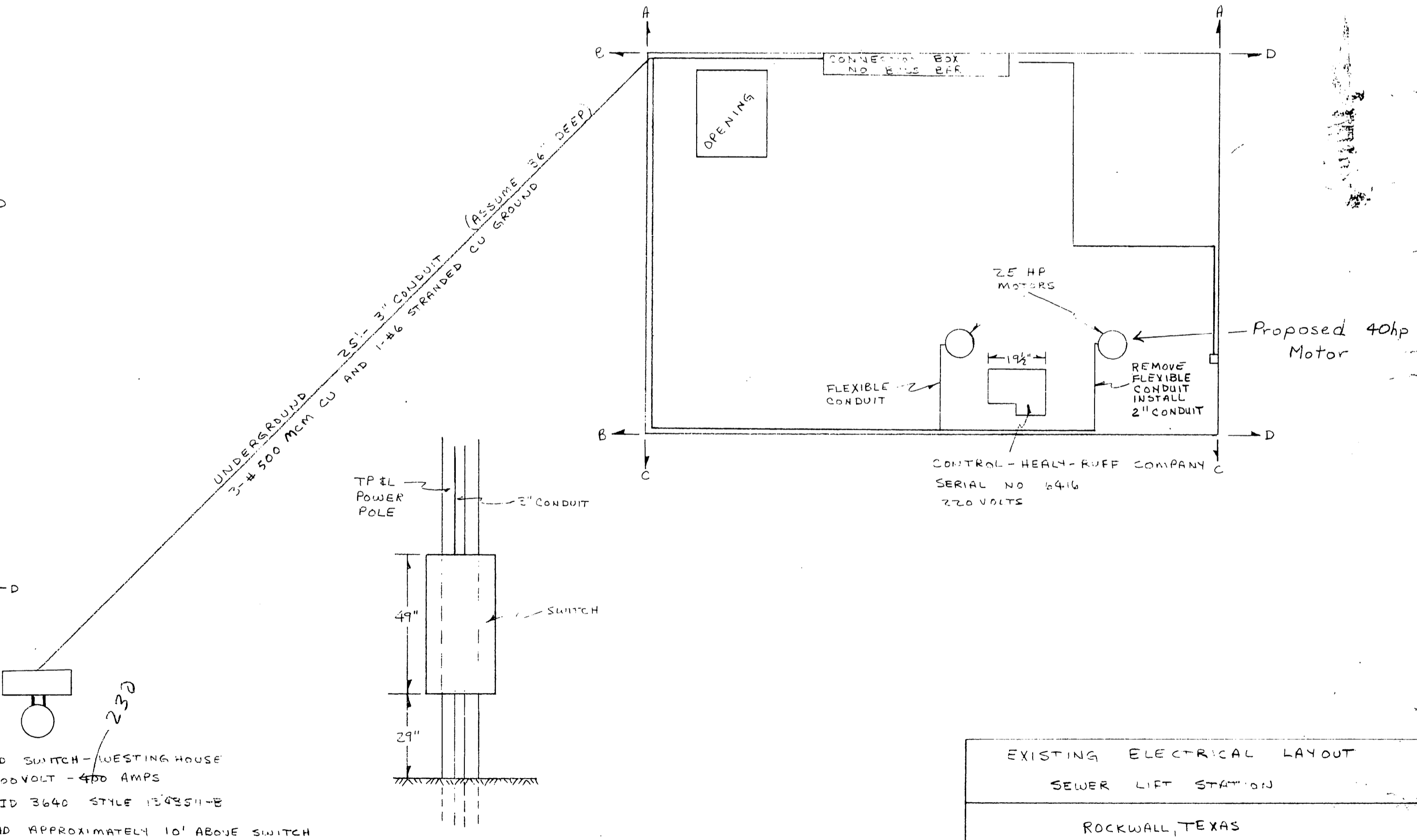
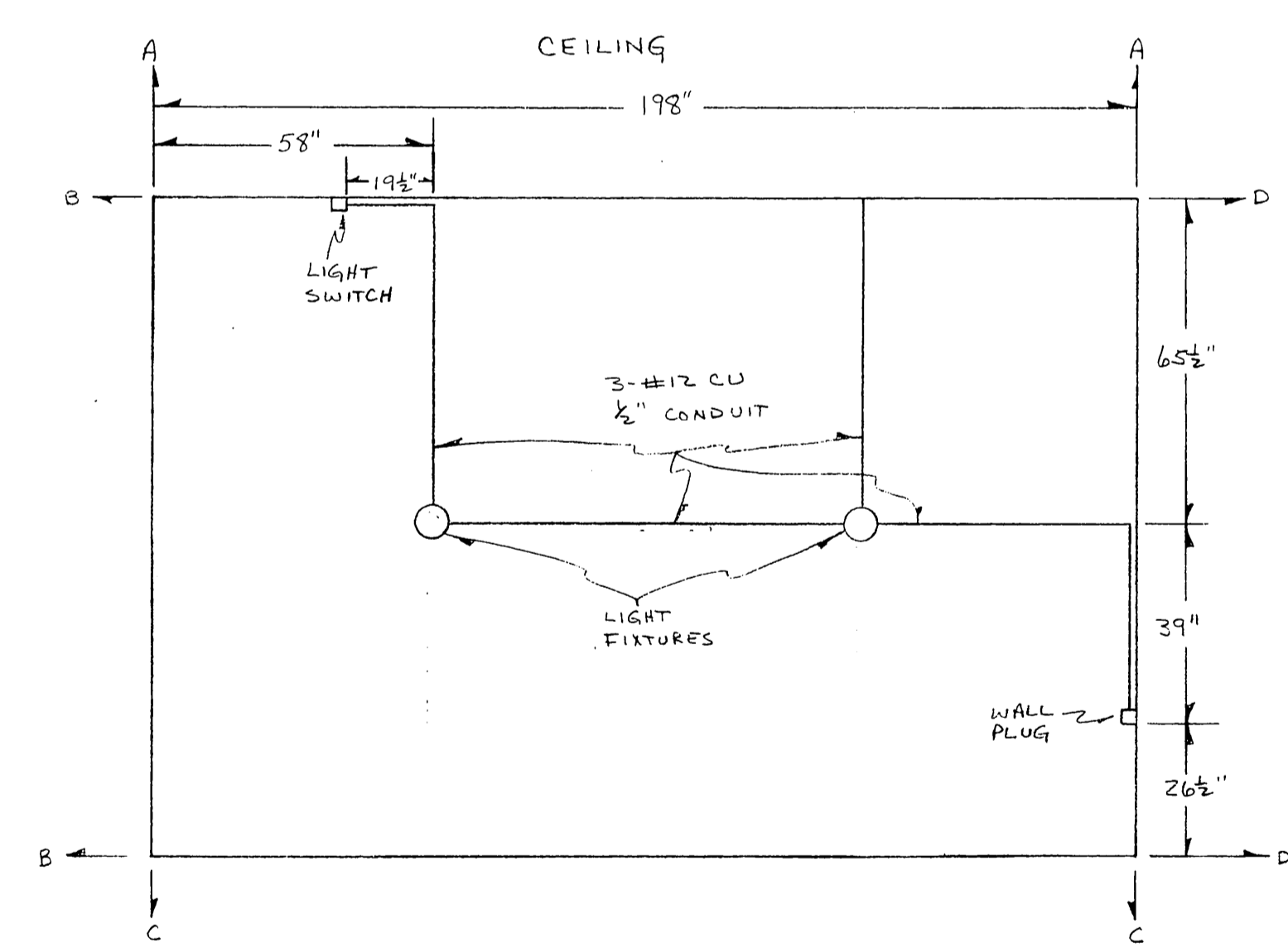
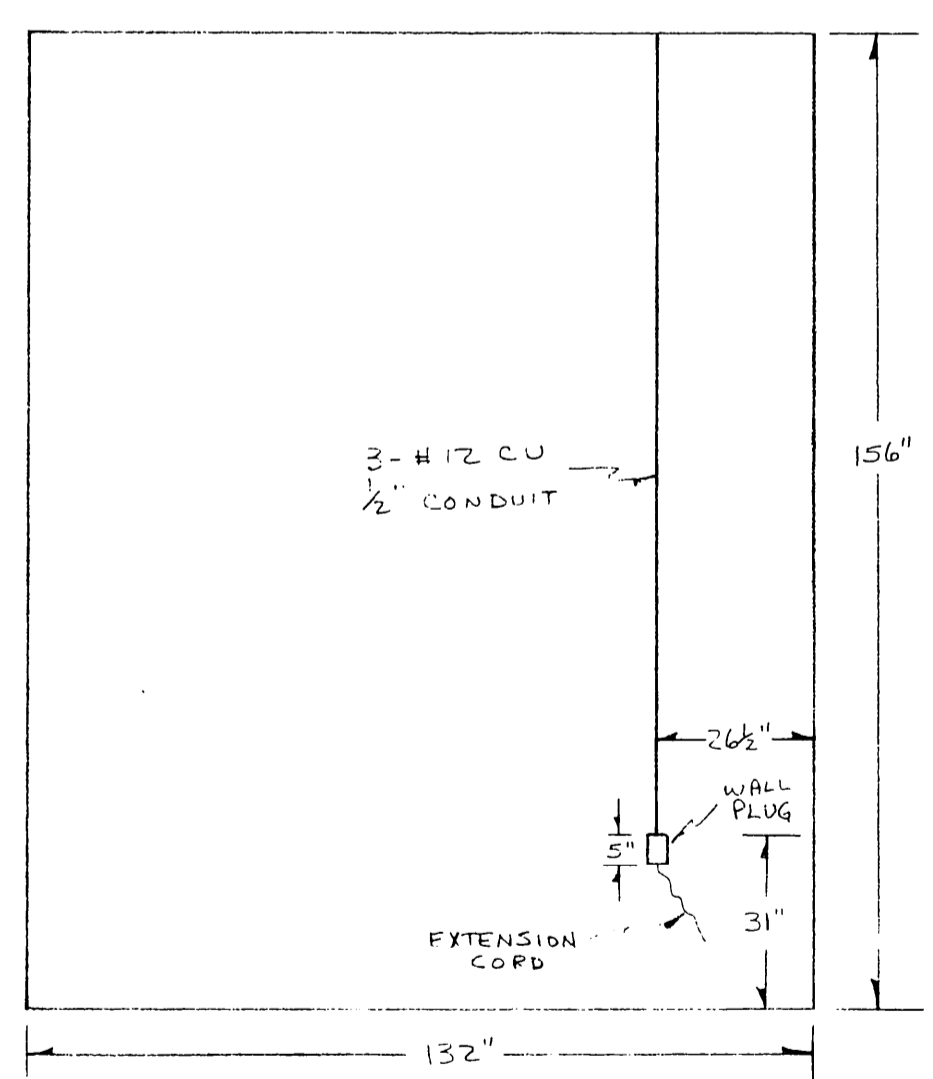
SECTION A-A



REMOVE EXISTING MAGNETIC STARTER
 INSTALL G.E. COMBINATION MAGNETIC STARTER OR EQUAL NEMA TYPE 1 SIZE 4 ENCLOSED FORMS G.E. # CR 107 FIC 3 CAA EQUIPPED WITH 3-OVERLOAD RELAYS, HEATER SIZED FOR 100 AMP FULL LOAD CURRENT G.E. CR 123 F118C
 TRANSFER EXISTING PILOT SWITCH G.E. # CR 29600-SY-103-A TO NEW COMBINATION MAGNETIC STARTER

1. WESTINGHOUSE LIFE STARTER, CR 2504-A, CLASS 11-206-N53 G.E. SWITCH CR 2960-SY-03-A (M.A. TYPE 200)
2. FEDERAL PACIFIC 170/245 100 AMP CIRCUIT BREAKER CATALOG NO. AB 102, PANEL BASED ASSEMBLY F-160752

SECTION D-D



POLE MOUNTED SWITCH - WESTINGHOUSE TYPE AB-1, 600VOLT - 400 AMPS CATALOG # ID 3640 STYLE 154954-B WEATHERHEAD APPROXIMATELY 10' ABOVE SWITCH

EXISTING ELECTRICAL LAYOUT	
SEWER LIFT STATION	
ROCKWALL, TEXAS	