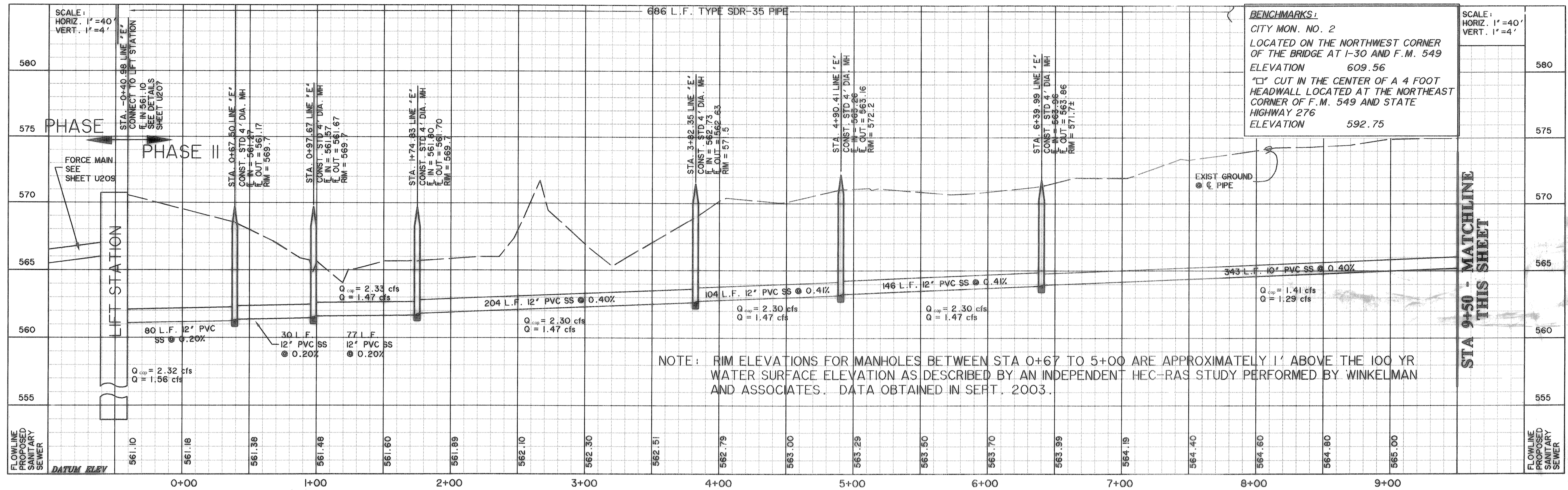


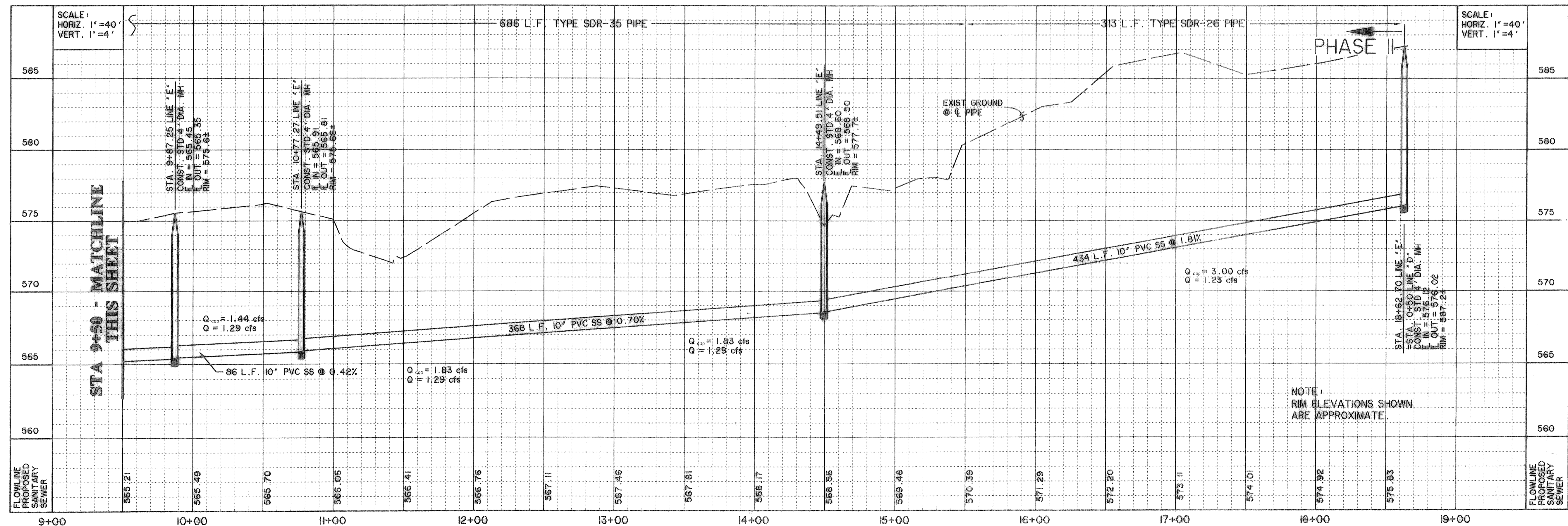
SS LINE 'E' - STA. -0+50 TO 9+50



BENCHMARKS:
 CITY MON. NO. 2
 LOCATED ON THE NORTHWEST CORNER
 OF THE BRIDGE AT I-30 AND F.M. 549
 ELEVATION 609.56
 "C" CUT IN THE CENTER OF A 4 FOOT
 HEADWALL LOCATED AT THE NORTHEAST
 CORNER OF F.M. 549 AND STATE
 HIGHWAY 276
 ELEVATION 592.75

NOTE: RIM ELEVATIONS FOR MANHOLES BETWEEN STA 0+67 TO 5+00 ARE APPROXIMATELY 1' ABOVE THE 100 YR WATER SURFACE ELEVATION AS DESCRIBED BY AN INDEPENDENT HEC-RAS STUDY PERFORMED BY WINKELMAN AND ASSOCIATES. DATA OBTAINED IN SEPT. 2003.

SS LINE 'E' - STA 9+50 TO END



NOTE: RIM ELEVATIONS SHOWN ARE APPROXIMATE.

TIME 16:42 FILE: SS-PROF4.dwg

PREPARED BY:
WIER & ASSOCIATES, INC.
 ENGINEERS SURVEYORS LAND PLANNERS
 4300 BELTWAY PLACE SUITE 130 ARLINGTON, TEXAS 76018 METRO (817)467-7700
 1380 U.S. HIGHWAY 281 SUITE 107 WANSFIELD, TEXAS 76763 METRO (817)477-8700
 8721 5th STREET FRISCO, TEXAS 75034 METRO (214)387-6800
 www.wierassociates.com

LONG BRANCH LIFT STATION, FORCE MAIN AND GRAVITY SEWER TO SERVE LOFLAND FARMS PHASE 5B

SANITARY SEWER PROFILES LINE 'E'

STATE OF TEXAS
 RONALD RAMIREZ
 81821
 REGISTERED PROFESSIONAL ENGINEER
 Ronald Ramirez
 WIER & ASSOCIATES, INC.
 COPYRIGHT ©
 LAST SHEET EDIT
 DATE 10-07-2003
 WA# 98041
SHEET NO. U102