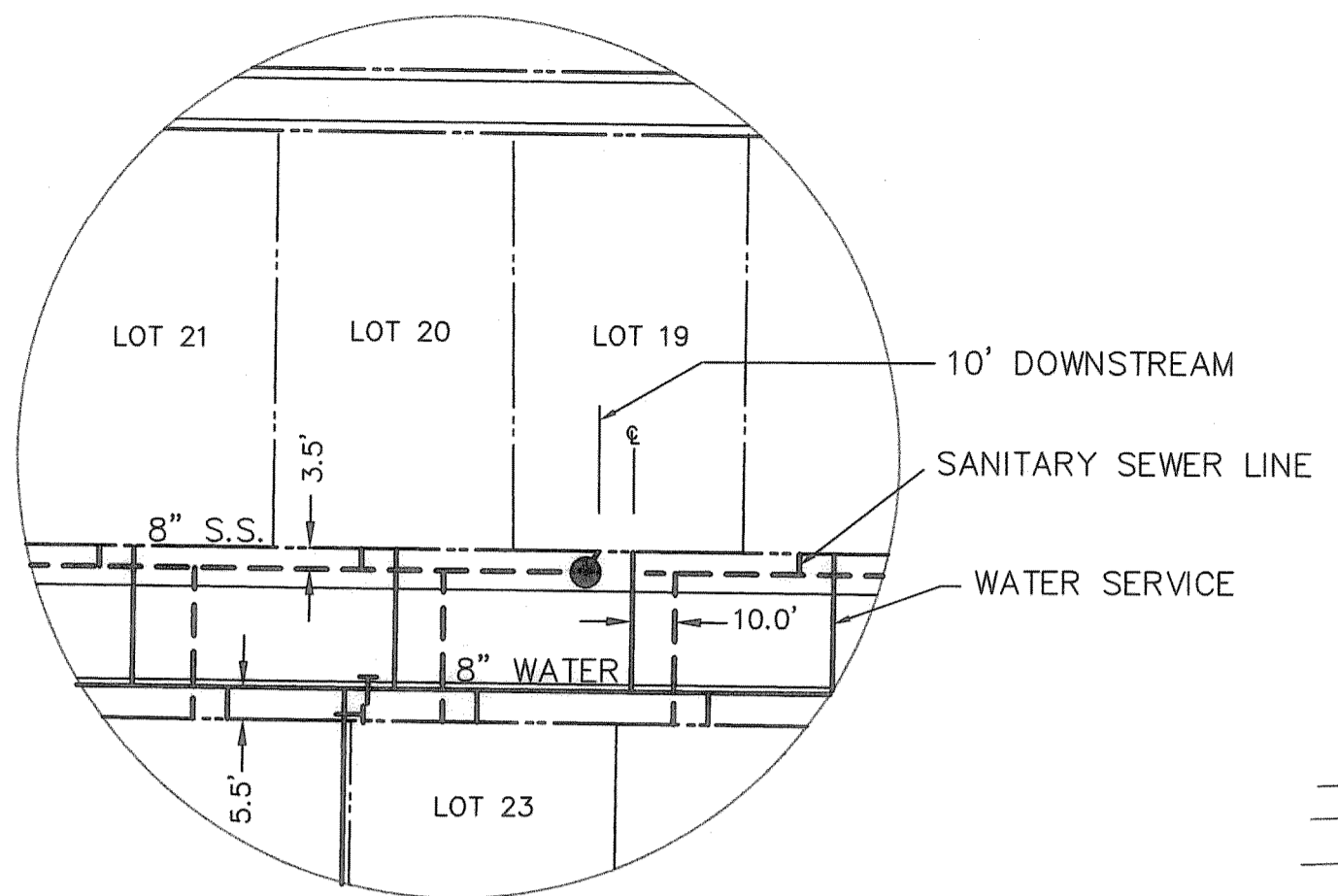


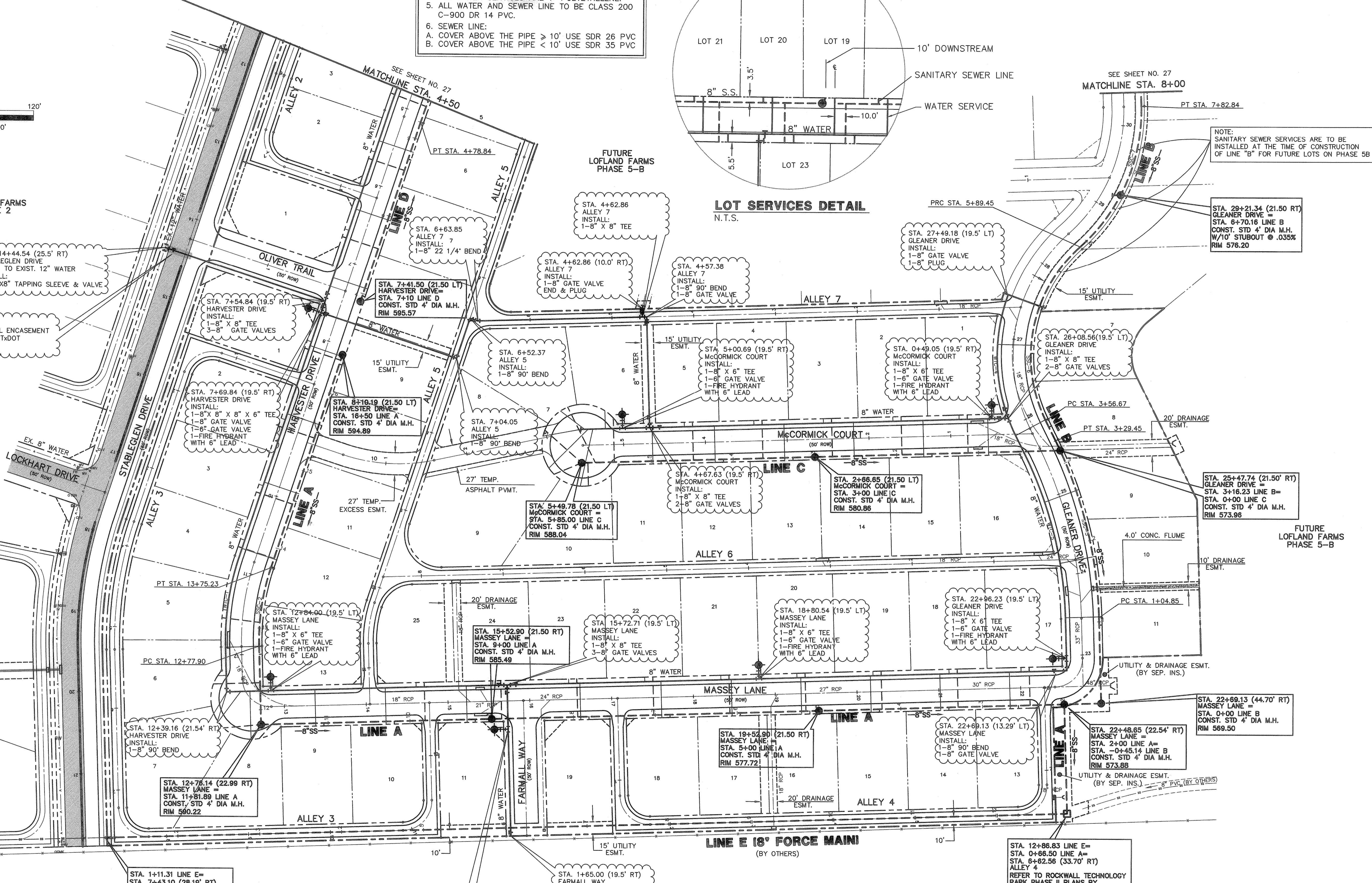
NOTE:  
 1. WATER LINE LOCATED 5' BACK OF CURB.  
 2. SANITARY SEWER LOCATED 7' BACK OF CURB.  
 3. ALL SEWER SERVICES ARE 4".  
 4. ALL WATER SERVICES ARE 1" POLYETHYLENE.  
 5. ALL WATER AND SEWER LINE TO BE CLASS 200 C-900 DR 14 PVC.  
 6. SEWER LINE:  
 A. COVER ABOVE THE PIPE > 10' USE SDR 26 PVC  
 B. COVER ABOVE THE PIPE < 10' USE SDR 35 PVC



NOTE: SANITARY SEWER SERVICES ARE TO BE INSTALLED AT THE TIME OF CONSTRUCTION OF LINE "B" FOR FUTURE LOTS ON PHASE 5B

LOFLAND FARMS PHASE 2

STA. 14+44.54 (25.5' RT) STABLEGLEN DRIVE CONN. TO EXIST. 12" WATER  
 INSTALL:  
 1-12"X8" TAPPING SLEEVE & VALVE



LOT SERVICES DETAIL  
 N.T.S.

SEE SHEET NO. 27  
 MATCHLINE STA. 8+00

THESE CONSTRUCTION PLANS WERE PREPARED UNDER THE RESPONSIBLE SUPERVISION OF M.D. NAIM UDDIN KHAN, REGISTERED PROFESSIONAL ENGINEER NO. 87776

THE SEAL APPEARING ON THIS DOCUMENT WAS AUTHORIZED BY M.D. NAIM UDDIN KHAN, # 87776

APPROV. **Winkelmann & Associates, Inc.**  
 CONSULTING CIVIL ENGINEERS & SURVEYORS  
 6750 Interstate 4300, Suite 100  
 Rockwall, Texas 75087  
 (972) 466-7000  
 www.winkelmann.com

LOFLAND FARMS, PHASE 5A  
 BAIRD SURVEY, ABSTRACT NO. 25  
 ROCKWALL COUNTY, TEXAS  
 CONTINENTAL HOMES  
 621 WEST COLLEGE STREET  
 GRAPEVINE, TEXAS 76051

**WATER & SANITARY SEWER PLAN**

Scale: 1"=60' Date: 11/06/03  
 Designed By: MK  
 Drawn By: MK  
 Checked By: NK  
 File: 320045A/SJL/DWG  
 Project No.: 32004.01

SHEET 26 OF 35

WATER CURVE TABLE

CURVE	RADIUS	DELTA	TANGENT	LENGTH	CHORD	BEARING
WTC-1	319.50'	20°01'25"	56.40'	111.65'	111.09'	N08°12'59"E
WTC-2	818.50'	28°34'13"	184.21'	381.03'	377.60'	N31°32'33"E
WTC-3	680.50'	39°09'06"	241.99'	465.00'	456.01'	N25°17'32"E
WTC-4	218.50'	46°18'34"	93.80'	177.28'	172.50'	S03°19'28"E
WTC-5	480.50'	24°40'34"	103.10'	206.84'	205.35'	S14°07'28"E
WTC-6	230.50'	18°56'35"	38.45'	76.21'	75.86'	S54°36'13"E

SANITARY SEWER CURVE TABLE

CURVE	RADIUS	DELTA	TANGENT	LENGTH	CHORD	BEARING
SSC-2	278.50'	20°01'25"	49.17'	97.33'	96.83'	N08°12'59"E
SSC-3	778.50'	26°38'23"	164.31'	381.98'	358.71'	N31°32'33"E
SSC-4	721.50'	39°09'06"	258.62'	496.66'	468.91'	N25°17'32"E
SSC-5	521.50'	24°40'34"	114.07'	224.60'	222.87'	N14°07'28"E
SSC-6	178.50'	74°42'59"	136.77'	232.77'	216.63'	N105°14'28"E
SSC-7	221.50'	50°01'33"	103.35'	193.40'	189.31'	N03°14'28"E
SSC-8	178.50'	22°51'40"	36.09'	71.22'	70.75'	N09°39'31"E
SSC-9	221.50'	22°51'40"	44.78'	88.38'	87.79'	N09°39'31"E
SSC-10	271.50'	46°38'24"	117.04'	221.01'	214.95'	N68°27'07"W

BENCHMARK: ELEV. = 600.69  
 CITY OF ROCKWALL R-19  
 BRASS MONUMENT AT THE N/W CORNER OF  
 SILVERVIEW & DIAMOND WAY, 500' ± SOUTH OF  
 S.H. 276.  
 BENCHMARK: ELEV. = 583.56  
 R.R. SPIKE SET IN THE CENTERLINE OF S.H. 276  
 3600± WEST OF F.M. 549