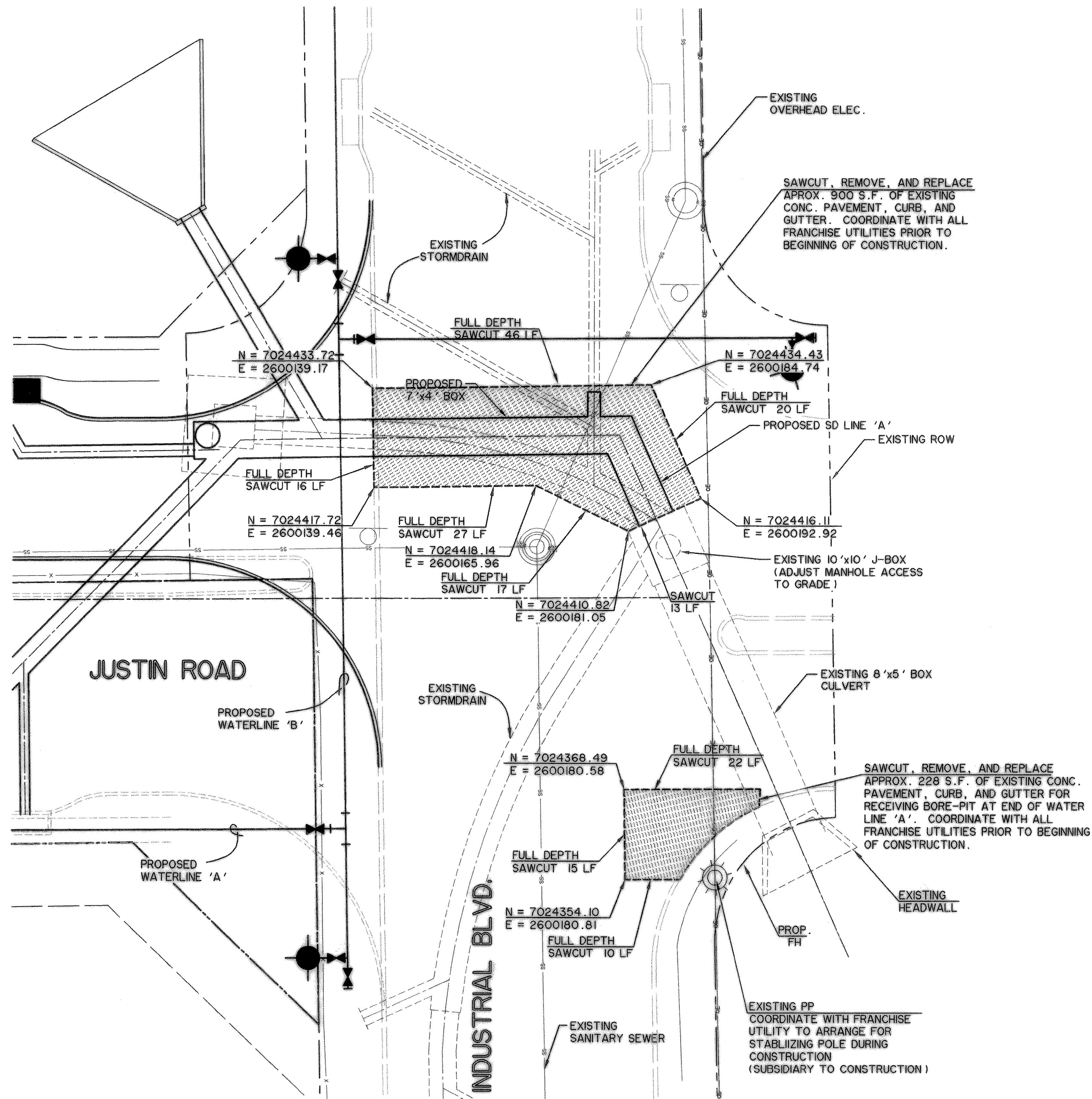


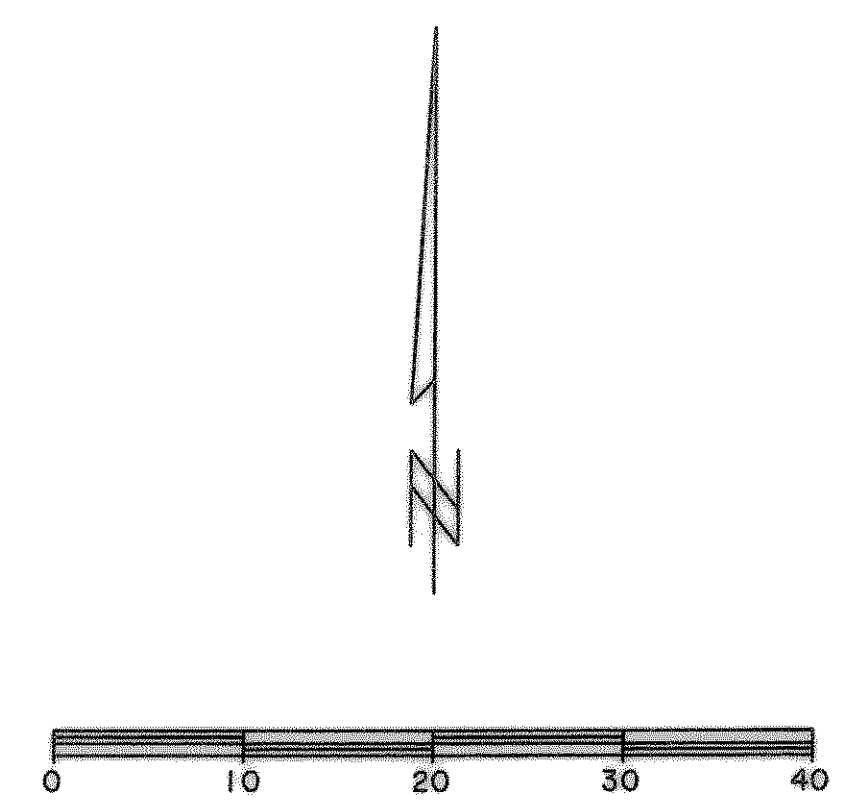
FILE: PAVE-9-INDUSTRIAL DETAILS-04124_01.dwg
TIME: 9:55



LEGEND

- EXISTING SANITARY SEWER
- EXISTING STORM DRAIN
- EXISTING OVERHEAD ELECTRIC
- EXISTING OVERHEAD ELECTRIC
- EXISTING CURB
- [Hatched Box] SAWCUT, REMOVE AND REPLACE CONCRETE

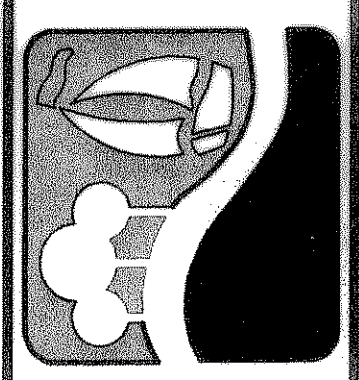
- NOTES:**
- 1) CONTRACTOR SHALL COORDINATE WITH ALL FRANCHISE UTILITIES AT LEAST THREE WEEKS PRIOR TO BEGINNING CONSTRUCTION. CONTRACTOR SHALL FIELD VERIFY UTILITY LOCATIONS AND ELEVATIONS AT CROSSINGS PRIOR TO CONSTRUCTION. (AT NO ADDITIONAL COST TO THE OWNER)
 - 2) CONTRACTOR SHALL SAWCUT AND REMOVE EXISTING CONCRETE PAVEMENT AS SHOWN AND COORDINATE PHASING PER SHEETS T101 AND T201.
 - 3) CONTRACTOR SHALL REPLACE CONCRETE PAVEMENT WITH REINFORCED 8" 4200 PSI CONCRETE.
 - 4) ALL BACKFILL SHALL BE IN 6" LIFTS AND 95% STANDARD PROCTOR DENSITY.
 - 5) BUTT-JOINTS WILL BE REQUIRED AT ALL LOCATIONS WHERE NEW PAVEMENT WILL TIE INTO EXISTING PAVEMENT AND BETWEEN PHASING OF CONCRETE PLACEMENT. (SEE PAVING DETAILS POO2)



**INTERSECTION OF JUSTIN RD.
AND IDUSTRIAL BLVD.**

**RECORD
DRAWING
2/18/09**

PREPARED BY:
WIER & ASSOCIATES, INC.
ENGINEERS SURVEYORS LAND PLANNERS
701 HIGHLANDER BLVD., SUITE 300 ARLINGTON, TEXAS 76015 METRO (817)467-7700
6848 ELM STREET FRISCO, TEXAS 75034 METRO (214)387-8000
www.wierassociates.com



**PAVEMENT REMOVAL AND
RELOCATIONS AT
INTERSECTION OF JUSTIN RD.
AND INDUSTRIAL BLVD.**

STATE OF TEXAS
RONALD RAMIREZ
51821
REGISTERED
PROFESSIONAL ENGINEER

Ronald Ramirez

WIER & ASSOCIATES, INC.
LAST SHEET EDIT
DATE 02-18-2009
WA# 04124_01

**SHEET NO.
P109**