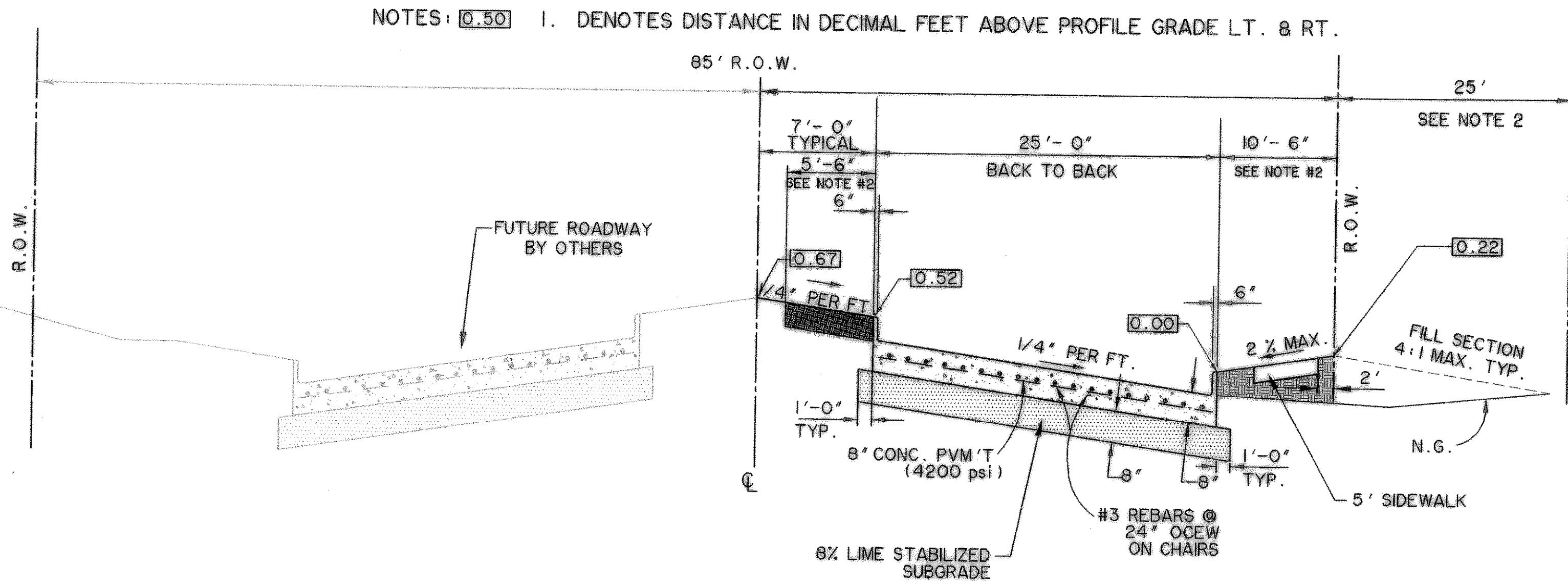
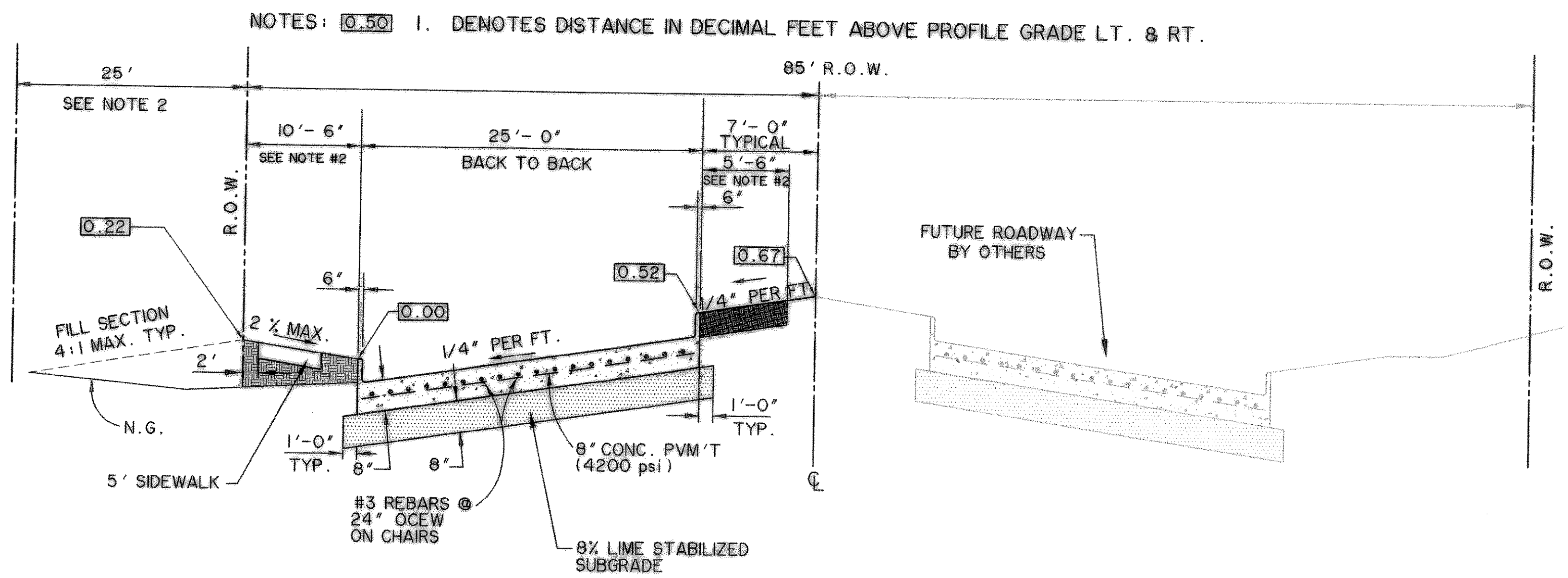


BUTTON DETAIL
JUSTIN ROAD - 85' R.O.W. DIVIDED
 SCALE: NTS



JUSTIN ROAD SOUTH LANES
DIVIDED SECTION
 MAJOR DIVIDED COLLECTOR
 SCALE: NTS

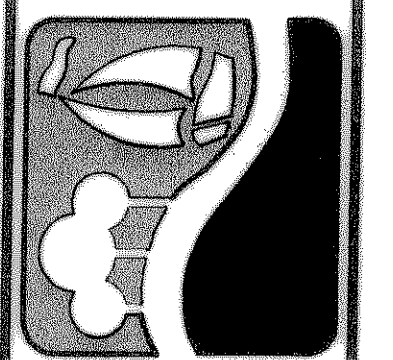


JUSTIN ROAD NORTH LANES
DIVIDED SECTION
 MAJOR DIVIDED COLLECTOR
 SCALE: NTS

- NOTES:**
1. ALL CONSTRUCTION SHALL CONFORM TO THE CITY OR ROCKWALL STANDARD CONSTRUCTION DETAIL. TYPICAL SECTIONS ARE REPLACED BY THOSE SHOWN ON THIS SHEET.
 2. PLACE MIN. 4" TOPSOIL FROM ON SITE SOURCE IN PARKWAYS, SLOPES, AND DISTURBED AREAS. SOD PARKWAYS PER CITY STANDARDS. THROUGH TRANSITION SECTIONS AND DIVIDED SECTIONS, SOD 5'6" FROM BACK OF CURB IN AREAS WITHOUT A TYPICAL PARKWAY.
 3. ALL FILLS SHALL BE COMPACTED TO 95% MIN. PROCTOR DENSITY. FILLS SHALL BE PLACED IN 8" MAXIMUM LIFTS, AND COMPACTION SHALL BE ACCOMPLISHED BY THE USE OF A SHEEPS-FOOT ROLLER.
 4. REFER TO SHEET P002 FOR JOINT DETAILS, SPACING AND JOINT MATERIALS
 5. REFER TO SHEET P002 FOR CURB, SIDEWALK AND CURB RAMP DETAILS.

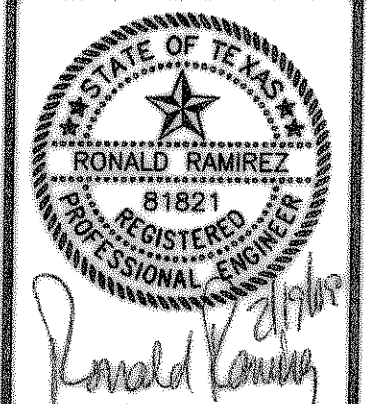
RECORD
DRAWING
 2/18/09

PREPARED BY:
WIER & ASSOCIATES, INC.
 ENGINEERS SURVEYORS LAND PLANNERS
 701 HIGHLANDER BLVD., SUITE 300 ARLINGTON, TEXAS 76015 METRO (817)467-7700
 6848 ELM STREET FROCO, TEXAS 75034 METRO (214)387-8000
 www.wierassociates.com



CITY OF
ROCKWALL
JUSTIN ROAD
EXTENSION

TYPICAL SECTIONS



COPYRIGHT ©
 WIER & ASSOCIATES, INC.
 LAST SHEET EDIT
 DATE 02-17-2009
 WA# 04124.01
SHEET NO.
P001

TIME: 11:53 FILE: Typical Sections-04124_01.dwg