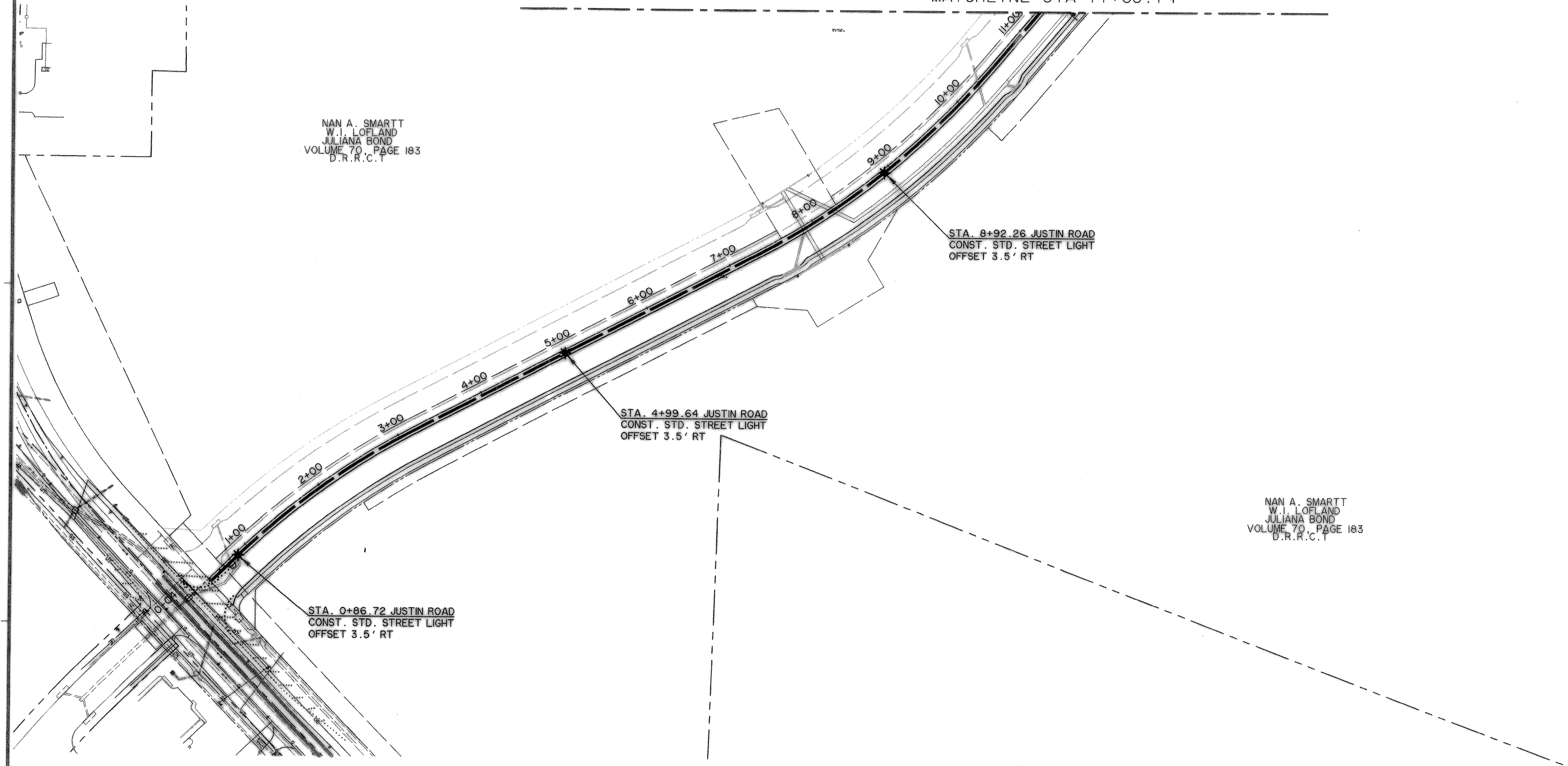


TIME: 16:17 FILE: STLIGHTS-L-04124_01.dwg

NAN A. SMARTT
W. J. LOFLAND
JULIANA BOND
VOLUME 70, PAGE 183
D.R.R.C.T

MATCHLINE STA 11+05.74

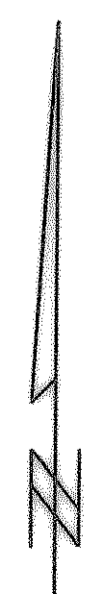


STA. 8+92.26 JUSTIN ROAD
CONST. STD. STREET LIGHT
OFFSET 3.5' RT

STA. 4+99.64 JUSTIN ROAD
CONST. STD. STREET LIGHT
OFFSET 3.5' RT

STA. 0+86.72 JUSTIN ROAD
CONST. STD. STREET LIGHT
OFFSET 3.5' RT

NAN A. SMARTT
W. J. LOFLAND
JULIANA BOND
VOLUME 70, PAGE 183
D.R.R.C.T

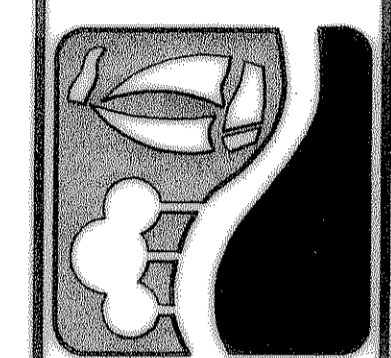


CAUTION !!
EXISTING UTILITIES ARE INDICATED ON THE PLANS FROM AVAILABLE INFORMATION. IT SHALL BE THE RESPONSIBILITY OF THE CONTRACTOR TO VERIFY THE LOCATION OF ALL UTILITIES, TO NOTIFY ALL UTILITY COMPANIES OF THE CONTRACTORS OPERATIONS, TO PROTECT ALL UTILITIES FROM DAMAGE, TO REPAIR ALL UTILITIES DAMAGED DUE TO THE CONTRACTORS OPERATIONS, AND TO NOTIFY THE ENGINEER PROMPTLY OF ALL CONFLICTS OF THE WORK WITH EXISTING UTILITIES.

LEGEND	
	PROPOSED STREET LIGHT AS PER TXU-ONCOR
	FUTURE STREET LIGHT
	PROPOSED ELECTRIC CONDUIT

**RECORD
DRAWING**
2/18/09

PREPARED BY:
WIA WIER & ASSOCIATES, INC.
ENGINEERS SURVEYORS LAND PLANNERS
701 HIGHLANDER BLVD., SUITE 300 ARLINGTON, TEXAS 76015 METRO (817)467-7700
6849 ELM STREET FRISCO, TEXAS 75034 METRO (214)387-8000
www.wierassociates.com



**CITY OF
ROCKWALL
JUSTIN ROAD
EXTENSION**

**STREET LIGHT
PLAN**

STATE OF TEXAS
RONALD RAMIREZ
81821
REGISTERED PROFESSIONAL ENGINEER
Copyright ©
WIER & ASSOCIATES, INC.
LAST SHEET EDIT
DATE 02-18-2009
WA# 04124_01
**SHEET NO.
L101**