

STA 1+05 WATERLINE 'B'
 N=7024341.20, E=2600135.43
 END 12" PVC
 INSTALL
 1-12" X 6" TEE
 1-6" GATE VALVE
 1-STD FH ASSEMBLY
 5 LF OF 6" PVC

STA 1+00 WATERLINE 'B'
 N=7024336.17, E=2600135.52
 END 12" PVC
 INSTALL
 1-12" CAP WITH MEGALUG
 RETAINER GLANDS (OR
 APPROVED EQUAL)
 1-THRUST BLOCK
 1-12" GATE VALVE

STA 1+22.88 WATERLINE 'B'
 = 37+02.27 WATERLINE 'A'
 = 40.5' LT ST STA 37+20.24

WHITMORE MANUFACTURING COMPANY
 VOLUME 453, PAGE 167
 D.R.R.C.T.

STA 2+18.41 WATERLINE 'B'
 N = 7024454.61
 E = 2600133.39
 INSTALL
 1-12" GATE VALVE
 1-12" X 6" TEE
 1-6" GATE VALVE
 1-STD FH ASSEMBLY
 5 LF OF 6" PVC

STA 3+25 WATERLINE 'B'
 N=7024561.13, E=2600131.47
 INSTALL
 1-12" X 6" TEE
 1-6" GATE VALVE
 1-STD FH ASSEMBLY
 5 LF OF 6" PVC

STA 4+67.34 +/- WATERLINE 'B'
 N 7024697.17, E=2600129.02
 REMOVE CAP AND CONNECT TO
 EXISTING 12" W.L.
 SEE NOTE #3 FOR CONNECTING
 COMMENTS
 INSTALL
 1-12" GATE VALVE

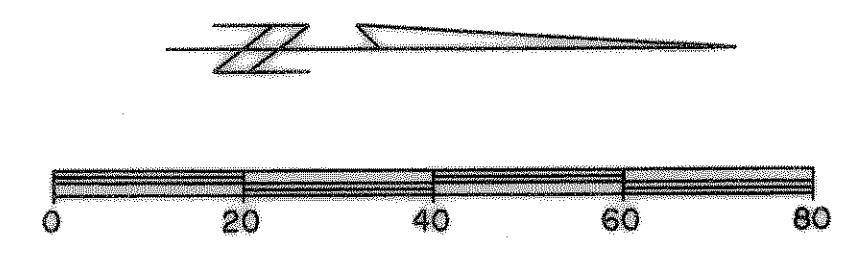
STA 1+96.94 WATERLINE 'B'
 SEE SHEET U105 FOR DETAILS

CAUTION !!!
 EXISTING UTILITIES ARE INDICATED ON THE PLANS FROM
 AVAILABLE INFORMATION. IT SHALL BE THE RESPONSIBILITY OF
 THE CONTRACTOR TO VERIFY THE LOCATION OF ALL UTILITIES,
 TO NOTIFY ALL UTILITY COMPANIES OF THE CONTRACTORS
 OPERATIONS, TO PROTECT ALL UTILITIES FROM DAMAGE,
 TO REPAIR ALL UTILITIES DAMAGED DUE TO THE CONTRACTORS
 OPERATIONS, AND TO NOTIFY THE ENGINEER PROMPTLY OF ALL
 CONFLICTS OF THE WORK WITH EXISTING UTILITIES.

▲ REVISED LOCATION OF WATERLINE
 CROSSING OF INDUSTRIAL BLVD.
 2/5/07

- NOTES:**
1. CONTRACTOR SHALL COORDINATE RELOCATIONS WITH FRANCHISE UTILITIES AT LEAST THREE WEEKS PRIOR TO CONSTRUCTION. CONTRACTOR SHALL FIELD VERIFY UTILITY LOCATIONS AND ELEVATIONS AT CROSSINGS PRIOR TO CONSTRUCTION.
 2. CONTRACTOR SHALL ADJUST EXISTING WATER LINES TO PROVIDE A MINIMUM 2' CLEARANCE AT ALL STORM DRAIN CROSSINGS.
 3. REMOVE END CAP AND CONNECT TO EXIST. 12" W/L CONTRACTOR TO VERIFY LOCATION OF EXISTING CAP AND LINE PRIOR TO BEGINNING OF CONSTRUCTION AND NOTIFY ENGINEER OF ANY DISCREPANCIES.
 4. WATERLINE SHALL BE INSTALLED AT DEPTH PER CITY OF ROCKWALL STANDARDS AS MEASURED FROM FINISHED GRADE OR PROFILE.

**RECORD
 DRAWING
 2/18/09**



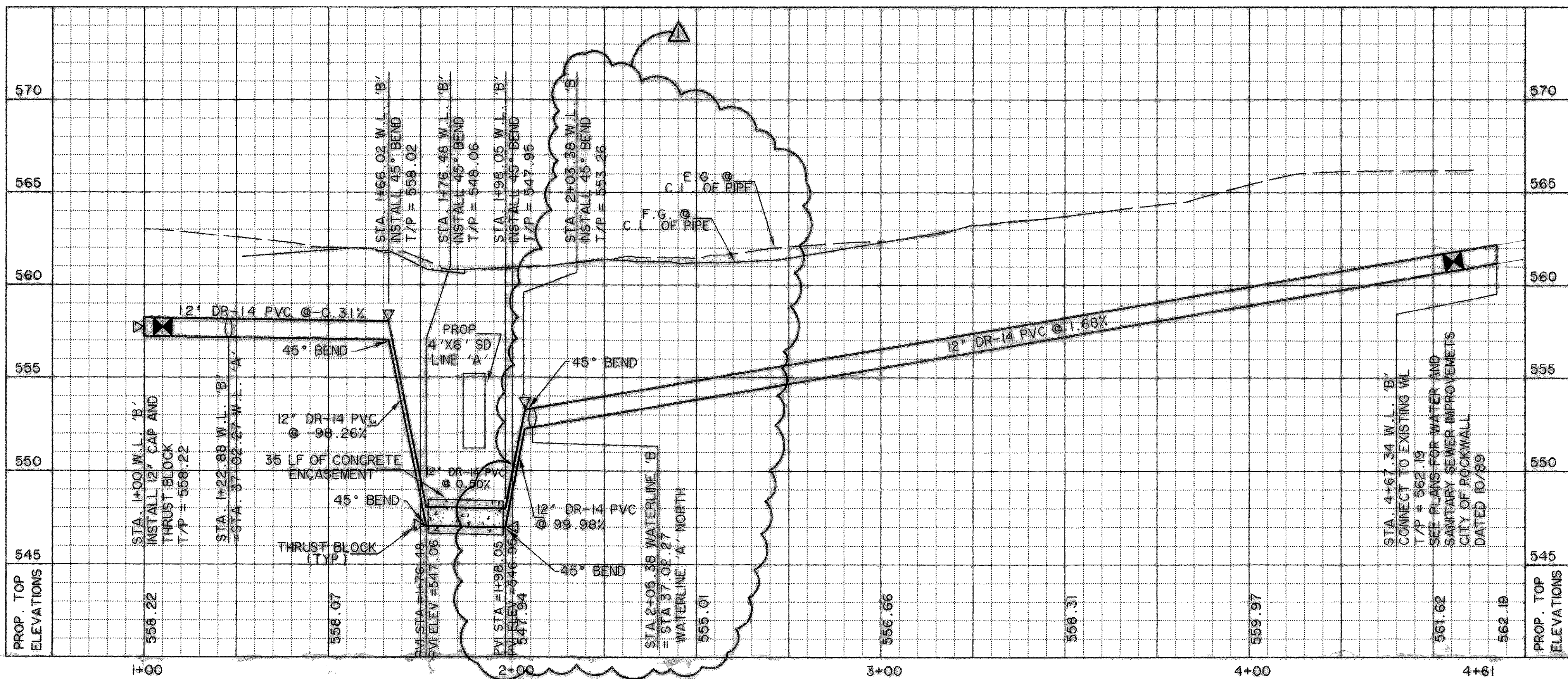
BENCHMARKS:

□ "C" CUT IN THE END OF THE SOUTH CURB OF WHITMORE DRIVE LOCATED APPROX 30' EAST OF INTERSECTION OF WHITMORE DRIVE AND TOWNSEND DRIVE.
 ELEVATION 565.24

□ "C" CUT IN THE NORTHWEST CORNER OF CURB INLET IN THE WEST CURB LINE OF INDUSTRIAL BLVD APPROX 85' NORTH FROM THE INTERSECTION OF PROPOSED WHITMORE DRIVE AND INDUSTRIAL BLVD.
 ELEVATION 561.28

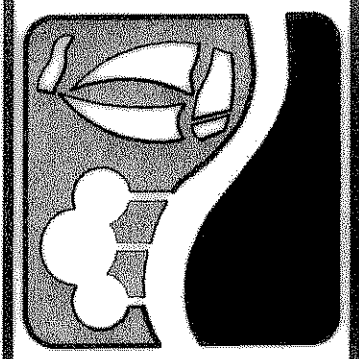
LEGEND

- W — PROPOSED WATER LINE
- SS — PROPOSED SS LINE
- G — PROPOSED GATE VALVE
- FH — PROPOSED FIRE HYDRANT
- - - - - EXISTING WATER LINE
- - - - - EXISTING SS LINE
- - - - - EXISTING GATE VALVE
- M — EXISTING MANHOLE
- FH — EXISTING FIRE HYDRANT



TIME 10:54 FILE: WTR-6-04124_01_rev1.dwg

PREPARED BY:
WIA WIER & ASSOCIATES, INC.
 ENGINEERS SURVEYORS LAND PLANNERS
 701 HIGHLANDER BLVD., SUITE 300 ARLINGTON, TEXAS 76015 METRO (817)467-7700
 6849 ELM STREET FORT WORTH, TEXAS 76104 METRO (214)387-8000
 www.wierassociates.com



**CITY OF
 ROCKWALL
 JUSTIN ROAD
 EXTENSION**

**WATER LINE 'B'
 PLAN AND PROFILE
 STA 1+00 TO STA 4+61**

STATE OF TEXAS
 REGISTERED PROFESSIONAL ENGINEER
 RONALD RAMIREZ
 81821
 2/19/09
 COPYRIGHT ©
 WIER & ASSOCIATES, INC.
 LAST SHEET EDIT
 DATE 02-18-2009
 WA# 04124.01
**SHEET NO.
 U106**