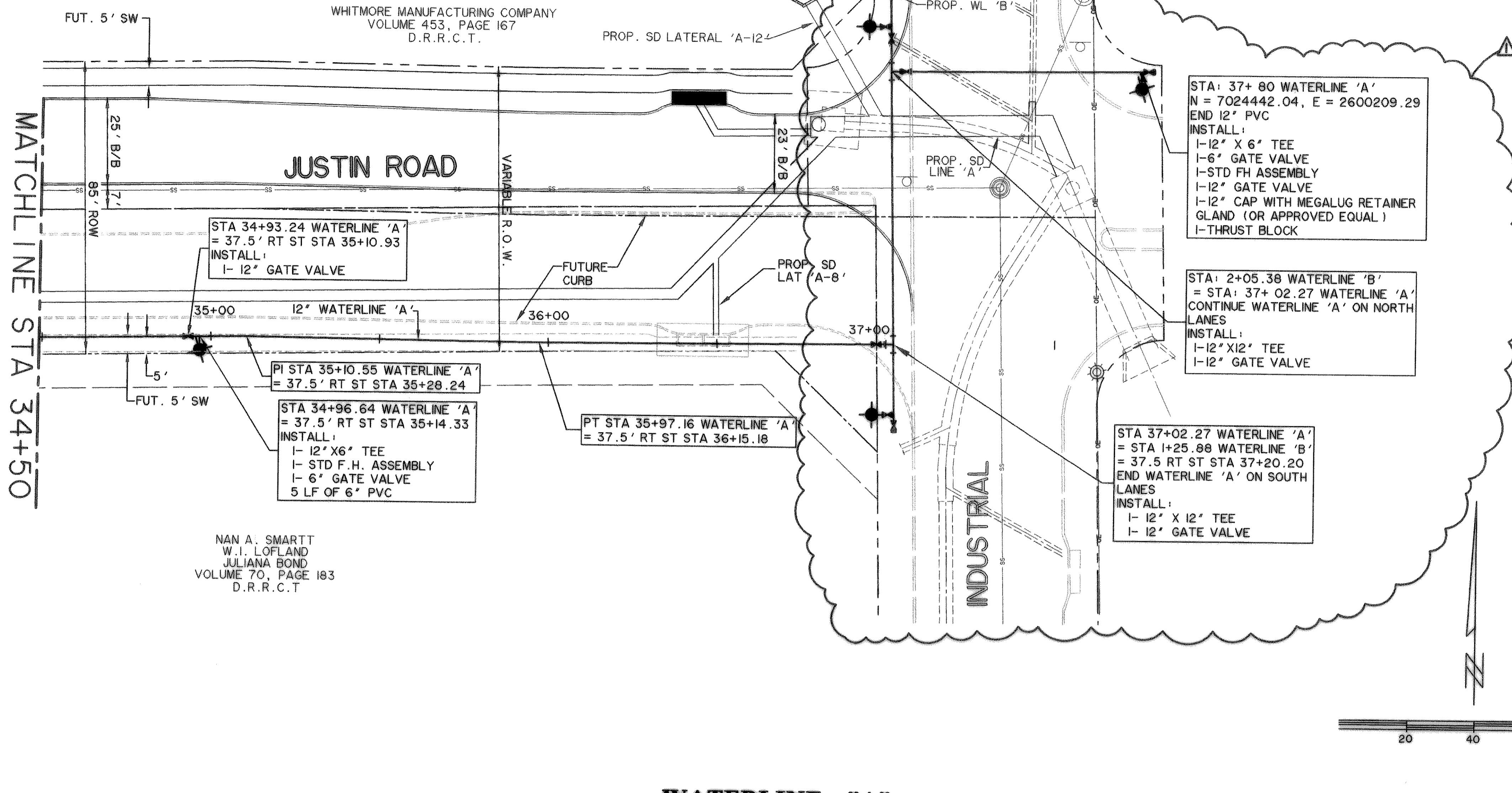


TIME ID: 53 FILE: WTR-5-04124_01_rev1.dwg



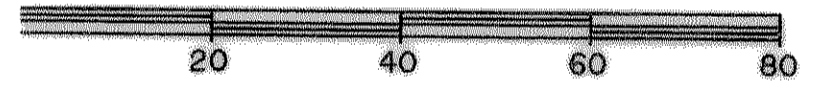
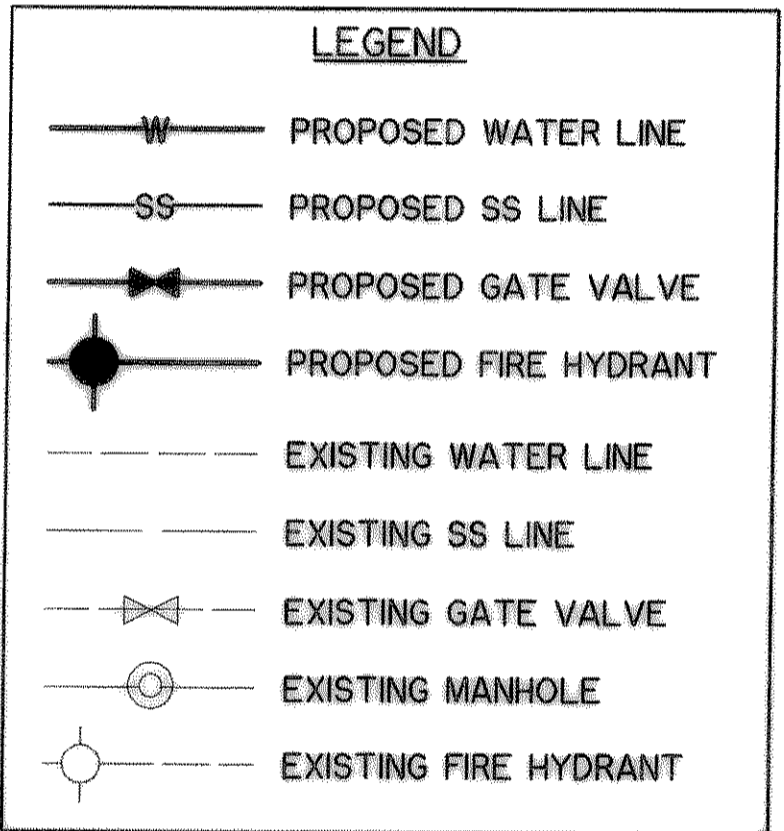
NAN A. SMARTT
W.I. LOFLAND
JULIANA BOND
VOLUME 70, PAGE 183
D.R.R.C.T

CAUTION !!
EXISTING UTILITIES ARE INDICATED ON THE PLANS FROM AVAILABLE INFORMATION. IT SHALL BE THE RESPONSIBILITY OF THE CONTRACTOR TO VERIFY THE LOCATION OF ALL UTILITIES, TO NOTIFY ALL UTILITY COMPANIES OF THE CONTRACTORS OPERATIONS, TO PROTECT ALL UTILITIES FROM DAMAGE, TO REPAIR ALL UTILITIES DAMAGED DUE TO THE CONTRACTORS OPERATIONS, AND TO NOTIFY THE ENGINEER PROMPTLY OF ALL CONFLICTS OF THE WORK WITH EXISTING UTILITIES.

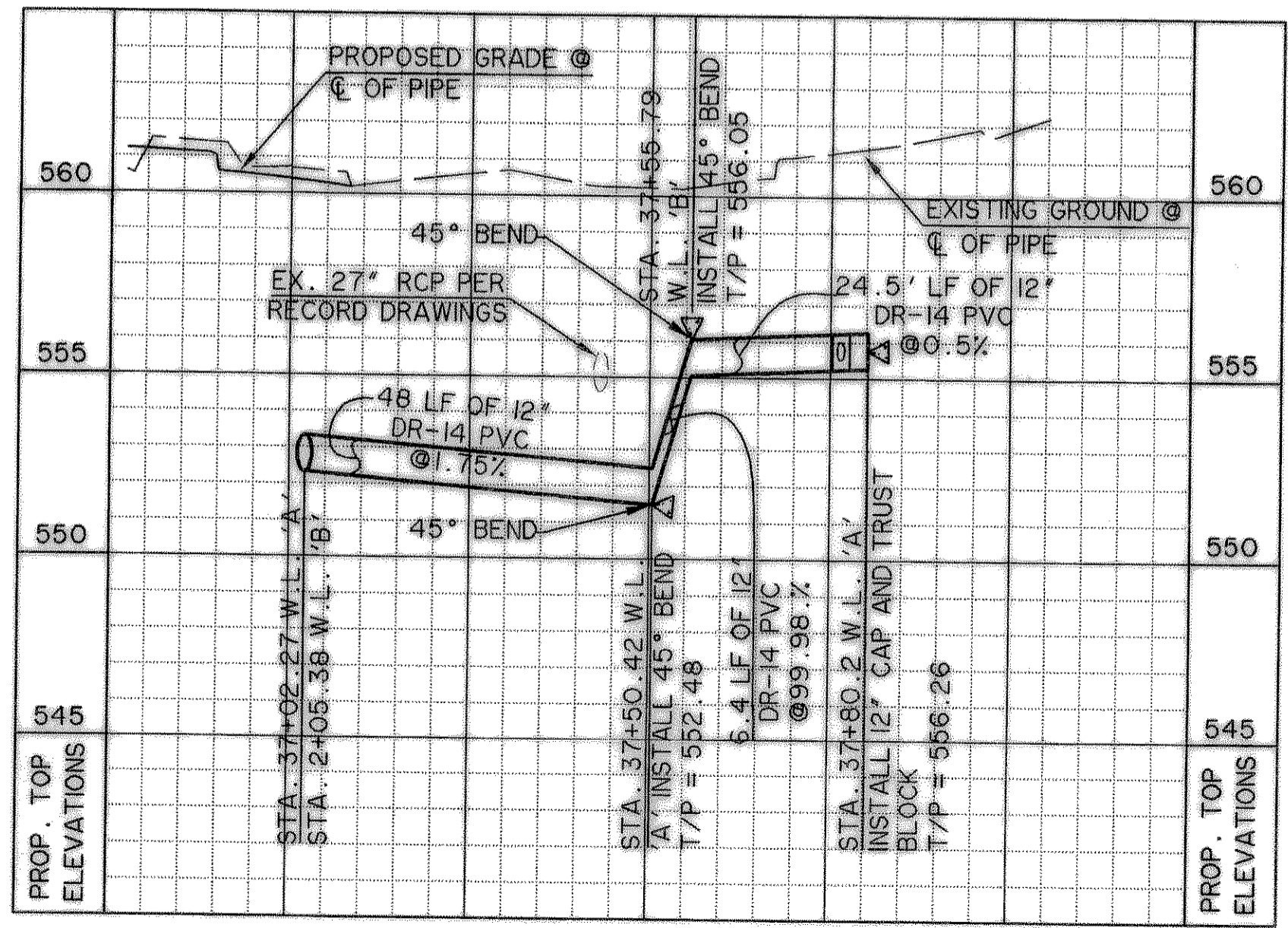
- NOTES:**
- CONTRACTOR SHALL COORDINATE RELOCATIONS WITH FRANCHISE UTILITIES AT LEAST THREE WEEKS PRIOR TO CONSTRUCTION. CONTRACTOR SHALL FIELD VERIFY UTILITY LOCATIONS AND ELEVATIONS AT CROSSINGS PRIOR TO CONSTRUCTION.
 - CONTRACTOR SHALL ADJUST EXISTING WATER LINES TO PROVIDE A MINIMUM 2' CLEARANCE AT ALL STORM DRAIN CROSSINGS.
 - WATERLINE SHALL BE INSTALLED AT DEPTH PER CITY OF ROCKWALL STANDARDS AS MEASURED FROM FINISHED GRADE OR PROFILE.

BENCHMARKS:

- "□" CUT IN THE END OF THE SOUTH CURB OF WHITMORE DRIVE LOCATED APPROX 30' EAST OF INTERSECTION OF WHITMORE DRIVE AND TOWNSEND DRIVE.
ELEVATION 565.24
- "□" CUT IN THE NORTHWEST CORNER OF CURB INLET IN THE WEST CURB LINE OF INDUSTRIAL BLVD APPROX 85' NORTH FROM THE INTERSECTION OF PROPOSED WHITMORE DRIVE AND INDUSTRIAL BLVD.
ELEVATION 561.28



WATERLINE "A"

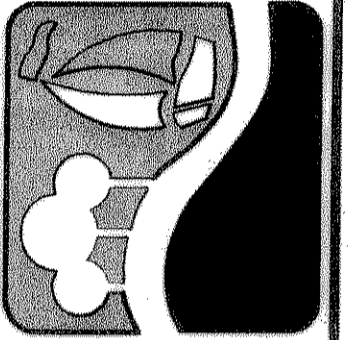


RECORD DRAWING
2/18/09

REVISIONS:

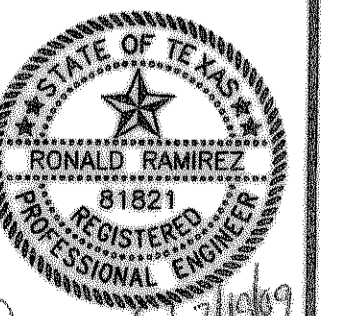
- △ CROSSING OF WATERLINE 'A' ACROSS INDUSTRIAL BLVD, RELOCATED APPROX 77' NORTH TO AVOID CONFLICTS WITH EXISTING HEADWALL AND GUARDRAIL
2/5/07

PREPARED BY:
WIA WIER & ASSOCIATES, INC.
ENGINEERS SURVEYORS LAND PLANNERS
701 HIGHLANDER BLVD., SUITE 300 ARLINGTON, TEXAS 76015 METRO (817)467-7700
6848 ELM STREET FRISCO, TEXAS 75034 METRO (214)387-8000
www.wierassociates.com



**CITY OF ROCKWALL
JUSTIN ROAD
EXTENSION**

**WATER LINE 'A'
STA 34+50 TO END**



Copyright ©
WIER & ASSOCIATES, INC.
LAST SHEET EDIT
DATE 02-18-2009
WA# 04124_01
SHEET NO. U105