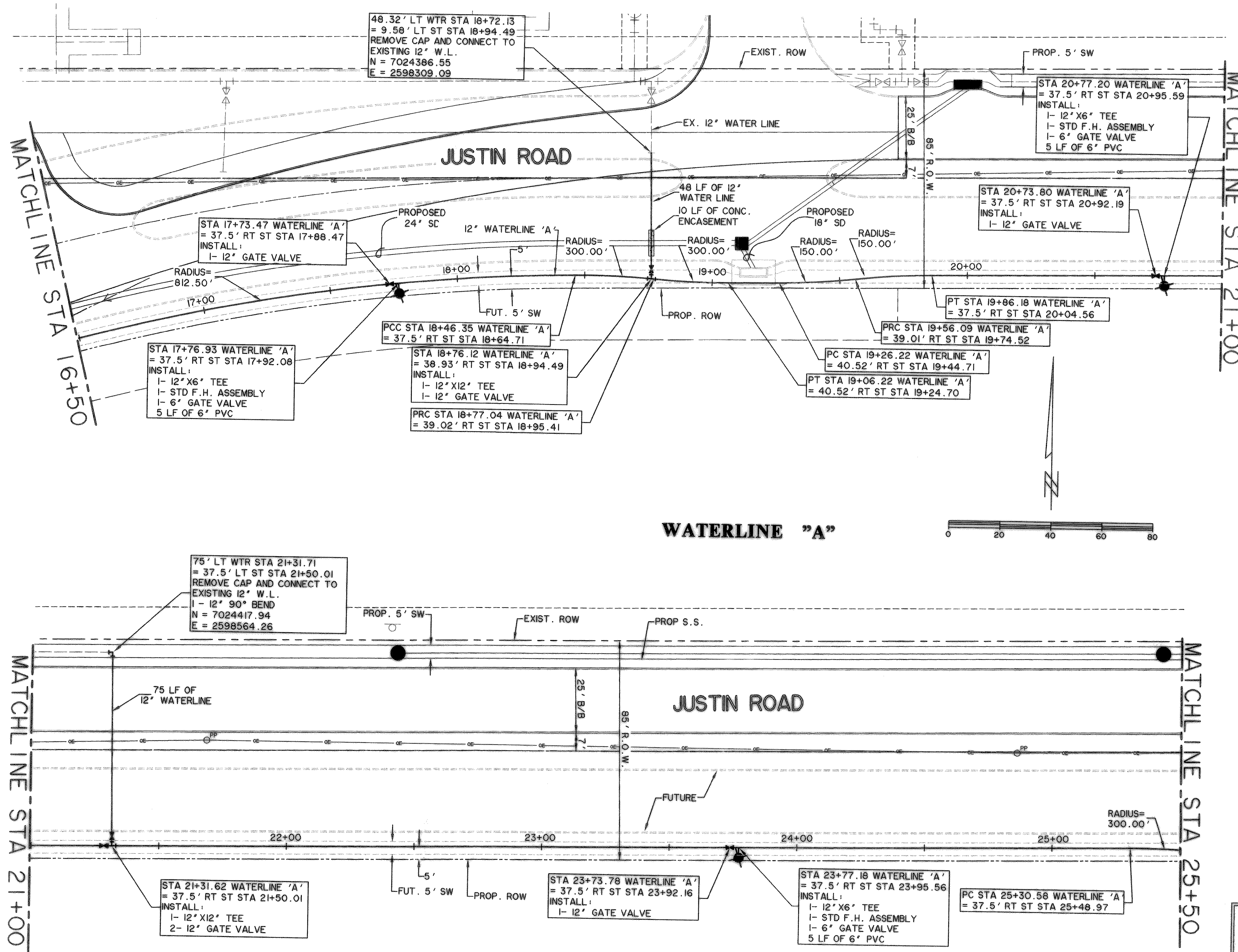


TIME: 10:52 FILE: WTR-3-04124_01.dwg



CAUTION !!
 EXISTING UTILITIES ARE INDICATED ON THE PLANS FROM AVAILABLE INFORMATION. IT SHALL BE THE RESPONSIBILITY OF THE CONTRACTOR TO VERIFY THE LOCATION OF ALL UTILITIES, TO NOTIFY ALL UTILITY COMPANIES OF THE CONTRACTORS OPERATIONS, TO PROTECT ALL UTILITIES FROM DAMAGE, TO REPAIR ALL UTILITIES DAMAGED DUE TO THE CONTRACTORS OPERATIONS, AND TO NOTIFY THE ENGINEER PROMPTLY OF ALL CONFLICTS OF THE WORK WITH EXISTING UTILITIES.

- NOTES:**
- CONTRACTOR SHALL COORDINATE RELOCATIONS WITH FRANCHISE UTILITIES AT LEAST THREE WEEKS PRIOR TO CONSTRUCTION. CONTRACTOR SHALL FIELD VERIFY UTILITY LOCATIONS AND ELEVATIONS AT CROSSINGS PRIOR TO CONSTRUCTION.
 - CONTRACTOR SHALL ADJUST EXISTING WATER LINES TO PROVIDE A MINIMUM 2' CLEARANCE AT ALL STORM DRAIN CROSSINGS.
 - WATERLINE SHALL BE INSTALLED AT DEPTH PER CITY OF ROCKWALL STANDARDS AS MEASURED FROM FINISHED GRADE OR PROFILE FOR JUSTIN RD.

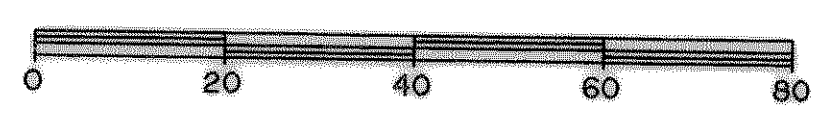
BENCHMARKS:

□ CUT IN THE END OF THE SOUTH CURB OF WHITMORE DRIVE LOCATED APPROX 30' EAST OF INTERSECTION OF WHITMORE DRIVE AND TOWNSEND DRIVE.
 ELEVATION 565.24

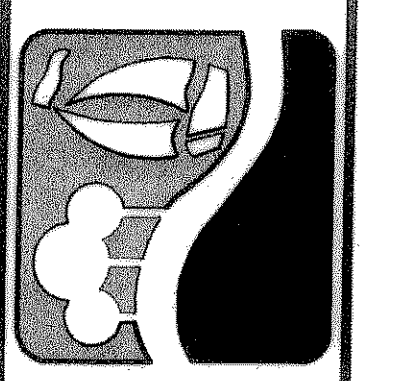
□ CUT IN THE NORTHWEST CORNER OF CURB INLET IN THE WEST CURB LINE OF INDUSTRIAL BLVD APPROX 85' NORTH FROM THE INTERSECTION OF PROPOSED WHITMORE DRIVE AND INDUSTRIAL BLVD.
 ELEVATION 561.28

LEGEND

	PROPOSED WATER LINE
	PROPOSED SS LINE
	PROPOSED GATE VALVE
	PROPOSED FIRE HYDRANT
	EXISTING WATER LINE
	EXISTING SS LINE
	EXISTING GATE VALVE
	EXISTING MANHOLE
	EXISTING FIRE HYDRANT



PREPARED BY:
WIER & ASSOCIATES, INC.
 ENGINEERS SURVEYORS LAND PLANNERS
 701 HIGHLANDER BLVD., SUITE 300 ARLINGTON, TEXAS 76015 METRO (817)467-7700
 6849 ELM STREET FRISCO, TEXAS 75034 METRO (214)397-8000
 www.wierassociates.com



**CITY OF
 ROCKWALL
 JUSTIN ROAD
 EXTENSION**

**WATER LINE 'A'
 STA 16+50 TO STA 25+50**

STATE OF TEXAS
 RONALD RAMIREZ
 81821
 REGISTERED
 PROFESSIONAL ENGINEER
 Ronald Ramirez
 COPYRIGHT ©
 WIER & ASSOCIATES, INC.
 LAST SHEET EDIT
 DATE 02-18-2009
 WA# 04124.01
**SHEET NO.
 U103**

**RECORD
 DRAWING
 2/18/09**