

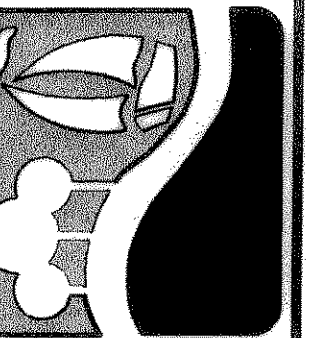
NAN A. SMARTT  
W.I. LOFLAND  
JULIANA BOND  
VOLUME 70, PAGE 183  
D.R.R.C.T

**CAUTION !!**  
EXISTING UTILITIES ARE INDICATED ON THE PLANS FROM AVAILABLE INFORMATION. IT SHALL BE THE RESPONSIBILITY OF THE CONTRACTOR TO VERIFY THE LOCATION OF ALL UTILITIES, TO NOTIFY ALL UTILITY COMPANIES OF THE CONTRACTORS OPERATIONS, TO PROTECT ALL UTILITIES FROM DAMAGE, TO REPAIR ALL UTILITIES DAMAGED DUE TO THE CONTRACTORS OPERATIONS, AND TO NOTIFY THE ENGINEER PROMPTLY OF ALL CONFLICTS OF THE WORK WITH EXISTING UTILITIES.

- NOTES:**
- CONTRACTOR SHALL COORDINATE RELOCATIONS WITH FRANCHISE UTILITIES AT LEAST THREE WEEKS PRIOR TO CONSTRUCTION. CONTRACTOR SHALL FIELD VERIFY UTILITY LOCATIONS AND ELEVATIONS AT CROSSINGS PRIOR TO CONSTRUCTION.
  - CONTRACTOR SHALL ADJUST EXISTING WATER LINES TO PROVIDE A MINIMUM 2' CLEARANCE AT ALL STORM DRAIN CROSSINGS.
  - WATERLINE SHALL BE INSTALLED AT DEPTH PER CITY OF ROCKWALL STANDARDS AS MEASURED FROM FINISHED GRADE OR PROFILE FOR JUSTIN RD.

**RECORD  
DRAWING  
2/18/09**

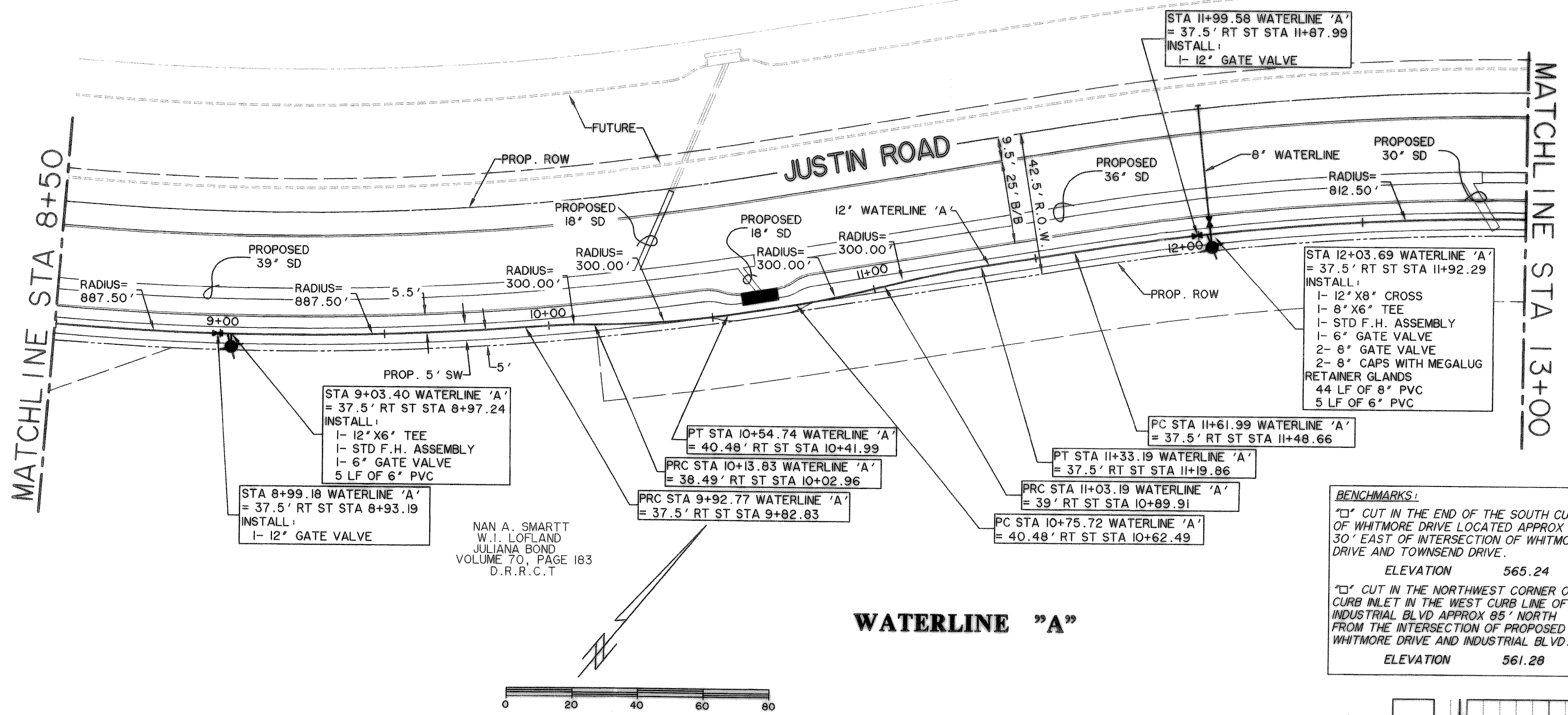
PREPARED BY:  
**WIA WIER & ASSOCIATES, INC.**  
ENGINEERS SURVEYORS LAND PLANNERS  
701 HIGHLANDER BLVD., SUITE 300 ARLINGTON, TEXAS 76015 METRO (817)467-7700  
6849 ELM STREET FRISCO, TEXAS 75034 METRO (214)387-9000  
www.wierassociates.com



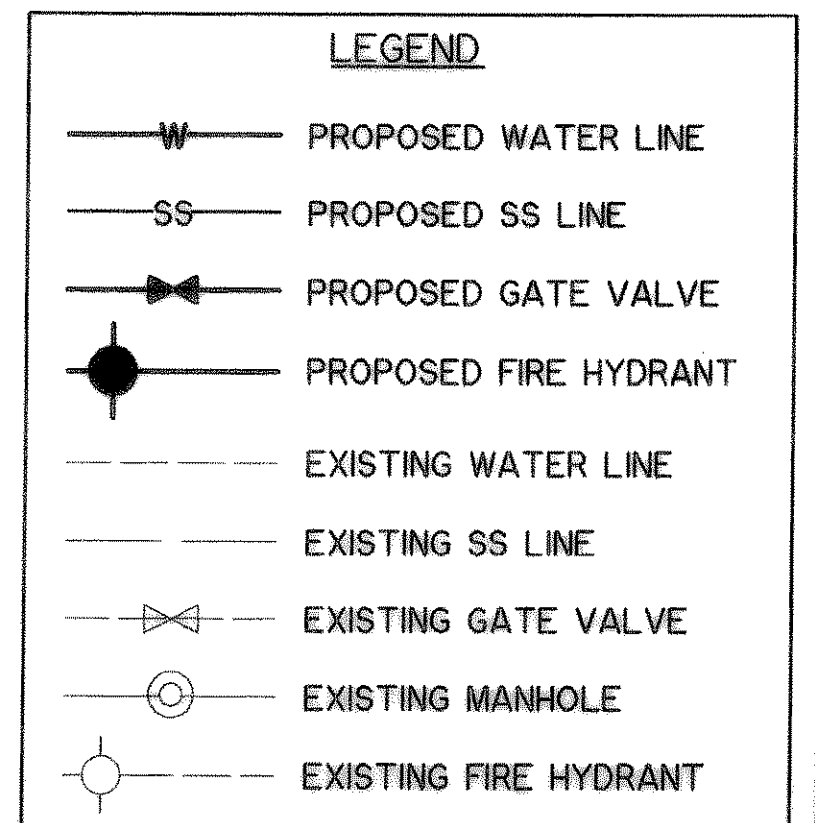
**CITY OF  
ROCKWALL  
JUSTIN ROAD  
EXTENSION**

**WATER LINE 'A'  
STA 8+50 TO STA 16+50**

STATE OF TEXAS  
REGISTERED PROFESSIONAL ENGINEER  
RONALD RAMIREZ  
8182  
Copyright ©  
WIER & ASSOCIATES, INC.  
LAST SHEET EDIT  
DATE 02-18-2009  
WA# 04124.01  
**SHEET NO.  
U102**

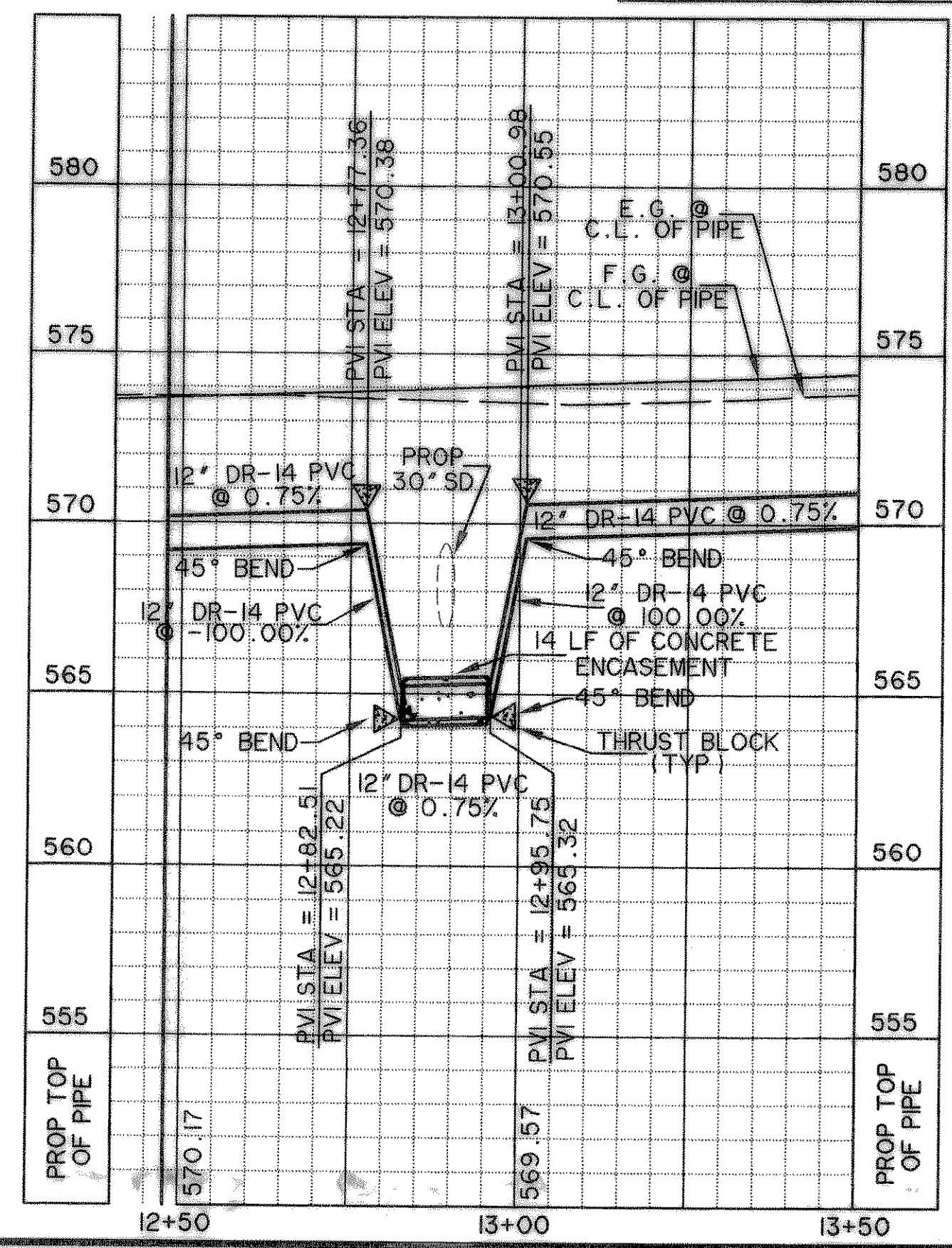
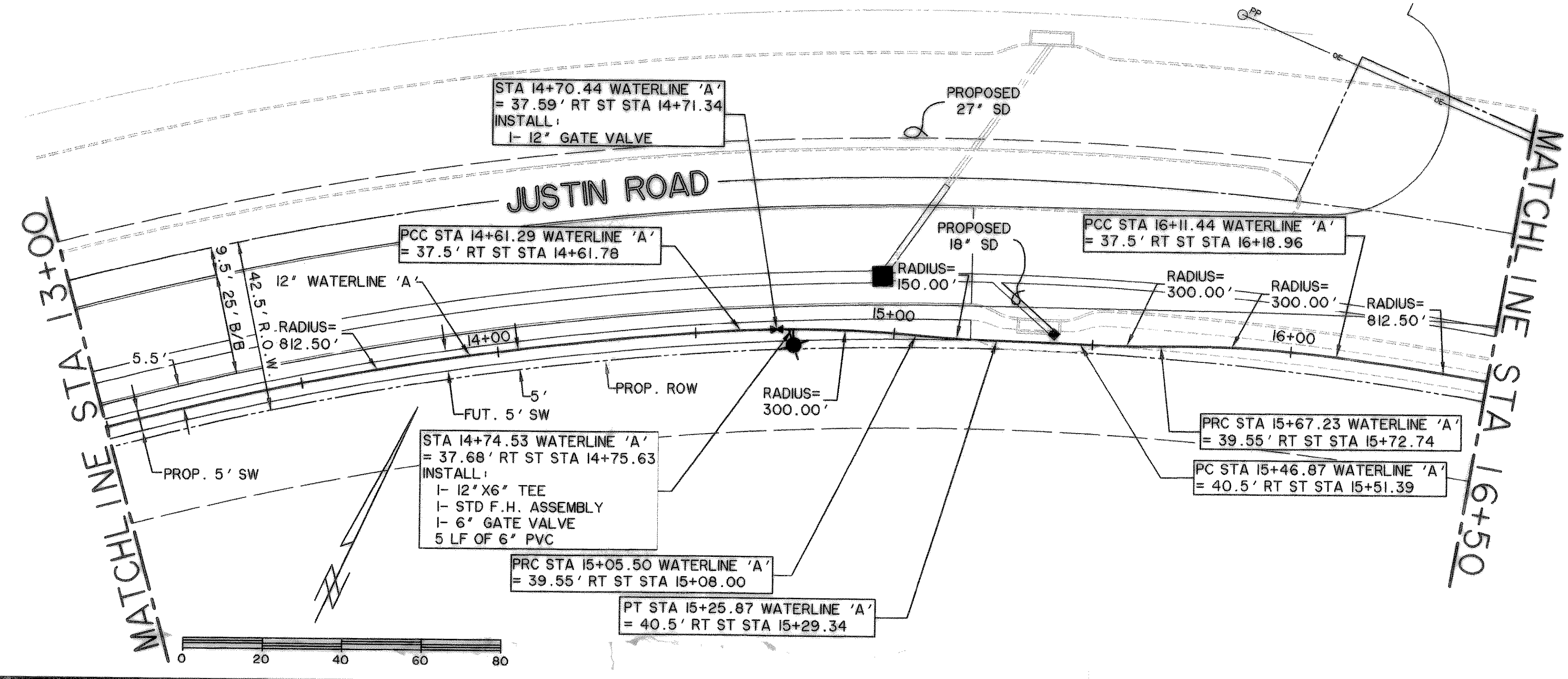
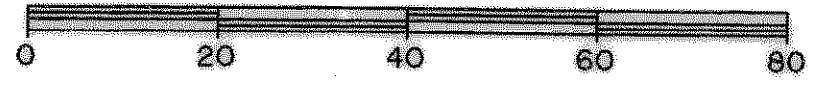


**BENCHMARKS:**  
"□" CUT IN THE END OF THE SOUTH CURB OF WHITMORE DRIVE LOCATED APPROX 30' EAST OF INTERSECTION OF WHITMORE DRIVE AND TOWNSEND DRIVE.  
ELEVATION 565.24  
"□" CUT IN THE NORTHWEST CORNER OF CURB INLET IN THE WEST CURB LINE OF INDUSTRIAL BLVD APPROX 85' NORTH FROM THE INTERSECTION OF PROPOSED WHITMORE DRIVE AND INDUSTRIAL BLVD.  
ELEVATION 561.28



NAN A. SMARTT  
W.I. LOFLAND  
JULIANA BOND  
VOLUME 70, PAGE 183  
D.R.R.C.T

**WATERLINE "A"**



TIME: 01:52 FILE: WTR-2-04124-01.dwg