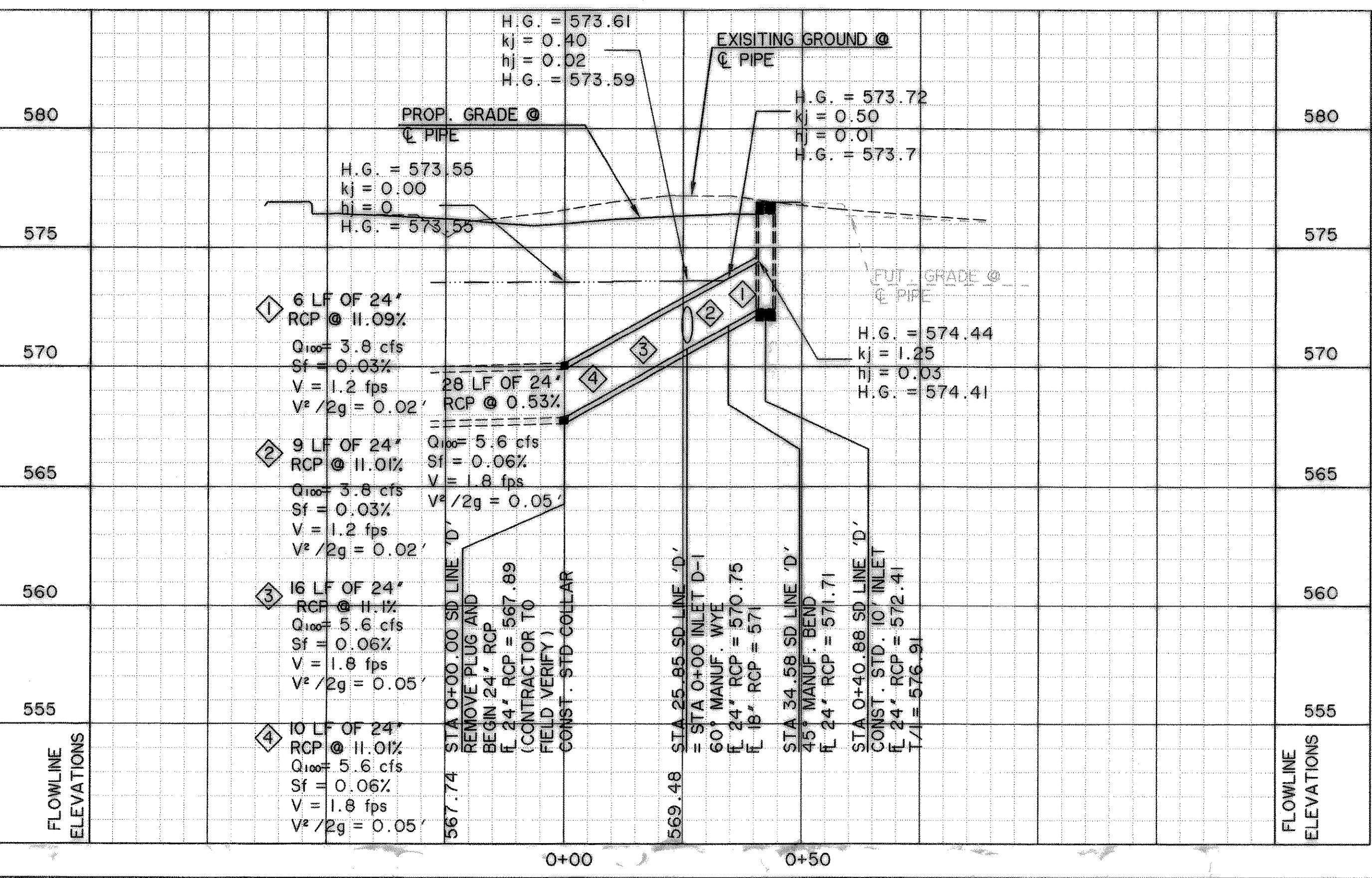
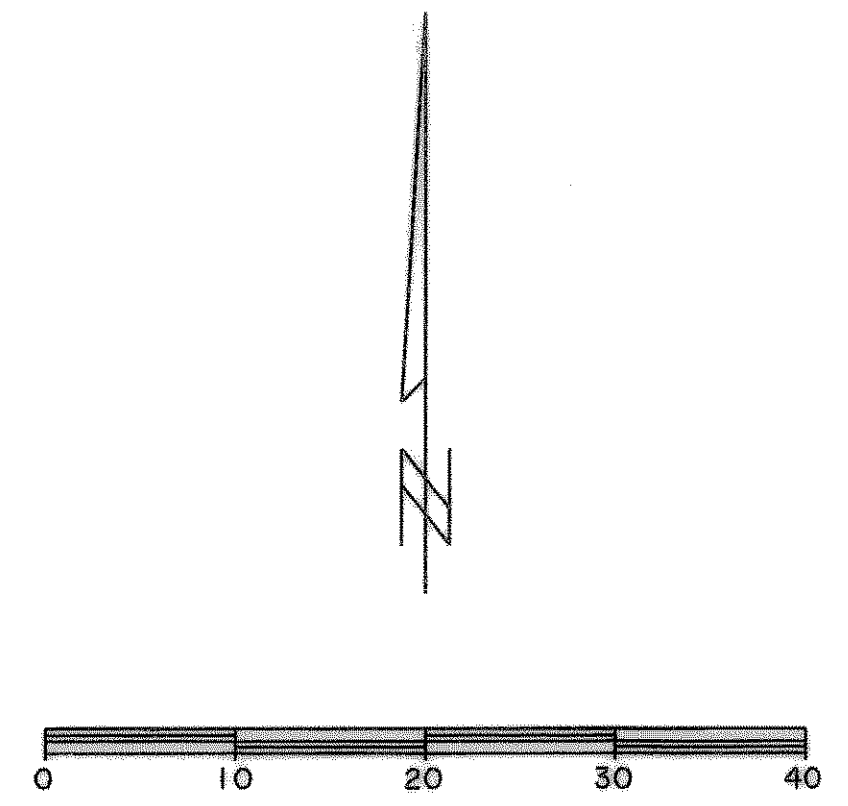


STORM DRAIN LINE "D"



RECORD DRAWING
2/18/09



BENCHMARKS:

□ CUT IN THE END OF THE SOUTH CURB OF WHITMORE DRIVE LOCATED APPROX 30' EAST OF INTERSECTION OF WHITMORE DRIVE AND TOWNSEND DRIVE.
ELEVATION 565.24

□ CUT IN THE NORTHWEST CORNER OF CURB INLET IN THE WEST CURB LINE OF INDUSTRIAL BLVD APPROX 85' NORTH FROM THE INTERSECTION OF PROPOSED WHITMORE DRIVE AND INDUSTRIAL BLVD.
ELEVATION 561.28

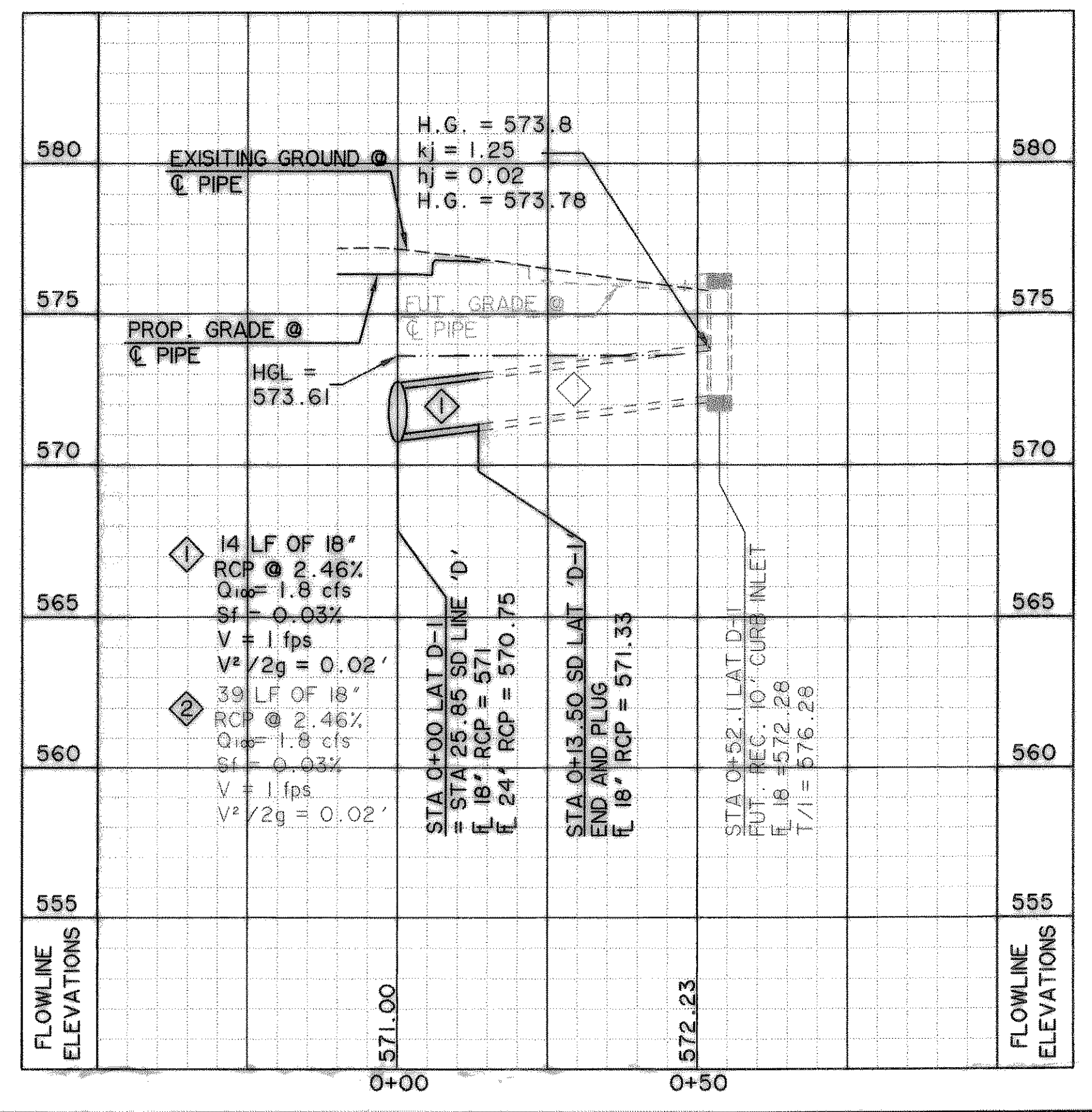
CAUTION !!

EXISTING UTILITIES ARE INDICATED ON THE PLANS FROM AVAILABLE INFORMATION. IT SHALL BE THE RESPONSIBILITY OF THE CONTRACTOR TO VERIFY THE LOCATION OF ALL UTILITIES, TO NOTIFY ALL UTILITY COMPANIES OF THE CONTRACTORS OPERATIONS, TO PROTECT ALL UTILITIES FROM DAMAGE, TO REPAIR ALL UTILITIES DAMAGED DUE TO THE CONTRACTORS OPERATIONS, AND TO NOTIFY THE ENGINEER PROMPTLY OF ALL CONFLICTS OF THE WORK WITH EXISTING UTILITIES.

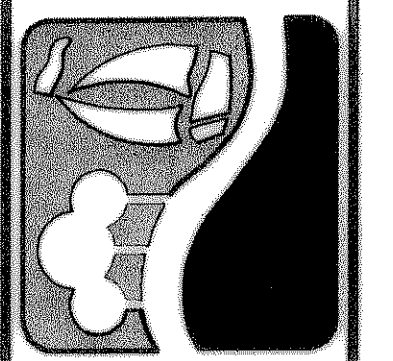
LEGEND

- BUILDING LINE
- W WATER LINE
- SS SANITARY SEWER LINE
- STORM DRAIN LINE
- R.O.W. LINE
- LOT LINE
- ⊕ FIRE HYDRANT
- STORM DRAIN INLET
- SANITARY SEWER MANHOLE
- ⊗ WATER VALVES
- DIRECTION OF FLOW

LATERAL "D-1"



PREPARED BY:
WIER & ASSOCIATES, INC.
ENGINEERS SURVEYORS LAND PLANNERS
701 HIGHLANDER BLVD., SUITE 300 ARLINGTON, TEXAS 76015 METRO (817)467-7700
6849 ELM STREET FRISCO, TEXAS 75034 METRO (214)397-8000
www.wierassociates.com



CITY OF ROCKWALL JUSTIN ROAD EXTENSION

STORM DRAIN LINE 'D' PLAN AND PROFILE STA 0+00 TO X+XX

STATE OF TEXAS
RONALD RAMIREZ
81821
REGISTERED PROFESSIONAL ENGINEER
Copyright © WIER & ASSOCIATES, INC.
LAST SHEET EDIT DATE 02-18-2009
WA# 04124.01
SHEET NO. D107