

TIME: 10:07 FILE: SD LINE 'A'-3-04124\_01\_REV-01.dwg

MATCHLINE STA 4+50

WHITMORE MANUFACTURING COMPANY  
VOLUME 453, PAGE 167  
D.R.R.C.T.

STA. 0+69.98 SD LINE 'A-6'  
= 35.0' LT ST STA 34+35.54  
= INSIDE FACE C. INLET @ CURB  
CONSTRUCT 10' RECESSED CURB INLET  
HG = 563.62  
T/I = 565.97

STA. 1+34.91 SD LINE 'A'  
= 0+00 SD LAT. 'A-8'  
= 26' LT. PST STA 37+03.10  
= CENTER OF J-BOX  
INSTALL 7' X 4' J-BOX WITH  
MANUFACTURED END CAP AND  
LEAVE-OUTS FOR MANHOLE  
ACCESS, 18" STUB-OUT, AND 45'  
45° WYE CONNECTION  
HG = 559.46  
TOP = 560.57

STA. 0+42.37 SD LAT 'A-12'  
= 62.58' LT ST STA 36+94.99  
CONST. CH-FW-0 HEADWALL

48 LF EXISTING 21"  
RCP TO BE REMOVED

STA. 1+21.51 SD LINE 'A'  
= 0+00 SD LAT 'A-12'  
= 26.07' LT ST STA 37+16.50  
INSTALL MANUFACTURED 60° WYE

STA. 0+77.03 SD LINE 'A'  
= 26.5' LT ST STA  
37+60.98  
REMOVE 15 LF EXISTING 27"  
RCP AND EXTEND 27" PIPE  
TO 7' X 4' BOX WITH  
WATERTIGHT SEAL

STA. 0+72.84 SD LINE 'A'  
= 26.5' LT ST STA 37+65.17  
INSTALL 60° BEND

STA. 0+58.06 SD LINE 'A'  
= 12.97' LT ST STA 37+71.1  
CONNECT TO EXISTING  
10' X 10' JUNCTION BOX

SD-LINE A-NEW  
STA: 0+58.06  
OFFSET: 0.00' LT  
SEE SHEET P109 FOR CONC.  
REMOVAL DETAILS AND  
DIMENSIONS

STA. 0+50.17 SD LINE 'A-8'  
= 32.63' LT ST STA 36+62.34  
= INSIDE FACE C. INLET @ CURB  
CONSTRUCT 15' RECESSED CURB INLET  
HG = 559.22  
T/I = 561.67

STA. 1+85.66 SD LINE 'A'  
= STA. 0+00 SD LAT 'A-7'  
= 10.25 RT ST STA 36+67.54  
INSTALL 45° WYE

STA. 2+03.09 SD LINE 'A'  
= 22.69' RT ST STA 36+55.326  
INSTALL 45° BEND

STA. 0+24.75 SD LAT. 'A-7'  
= 35' RT ST STA 36+64.01  
FUTURE 15' RECESSED CURB INLET  
END AND PLUG 18" RCP  
FUTURE 15' REC. CURB INLET

TEMP. CONST.  
EASEMENT

NAN A. SMARTT  
W.I. LOFLAND  
JULIANA BOND  
VOLUME 70, PAGE 183  
D.R.R.C.T.

STA. 3+87.64 SD LINE 'A'  
= STA. 0+00 SD LAT 'A-6'  
= 25.51' RT ST STA 34+70.54  
INSTALL MANUFACTURED 60° WYE

**CAUTION !!!**  
UNDERGROUND UTILITIES

EXISTING UTILITIES AND UNDERGROUND FACILITIES INDICATED ON THESE PLANS HAVE BEEN LOCATED FROM REFERENCE INFORMATION SUPPLIED BY VARIOUS OWNERS OF THE FACILITIES. THE ENGINEER DOES NOT ACCEPT THE RESPONSIBILITY FOR THE UTILITY LOCATIONS SHOWN, IT SHALL BE THE RESPONSIBILITY OF THE CONTRACTOR TO VERIFY BOTH HORIZONTALLY AND VERTICALLY THE LOCATION OF ALL EXISTING UTILITIES AND UNDERGROUND FACILITIES PRIOR TO CONSTRUCTION, TO TAKE NECESSARY PRECAUTIONS IN ORDER TO PROTECT ALL FACILITIES ENCOUNTERED, AND TO NOTIFY THE ENGINEER PROMPTLY OF ALL CONFLICTS OF THE WORK WITH EXISTING UTILITIES. THE CONTRACTOR SHALL PRESERVE AND PROTECT ALL EXISTING UTILITIES FROM DAMAGE DURING CONSTRUCTION. ANY DAMAGE BY THE CONTRACTOR TO EXISTING UTILITIES SHALL BE REPAIRED BY THE CONTRACTOR AT HIS EXPENSE.

**BENCHMARKS:**

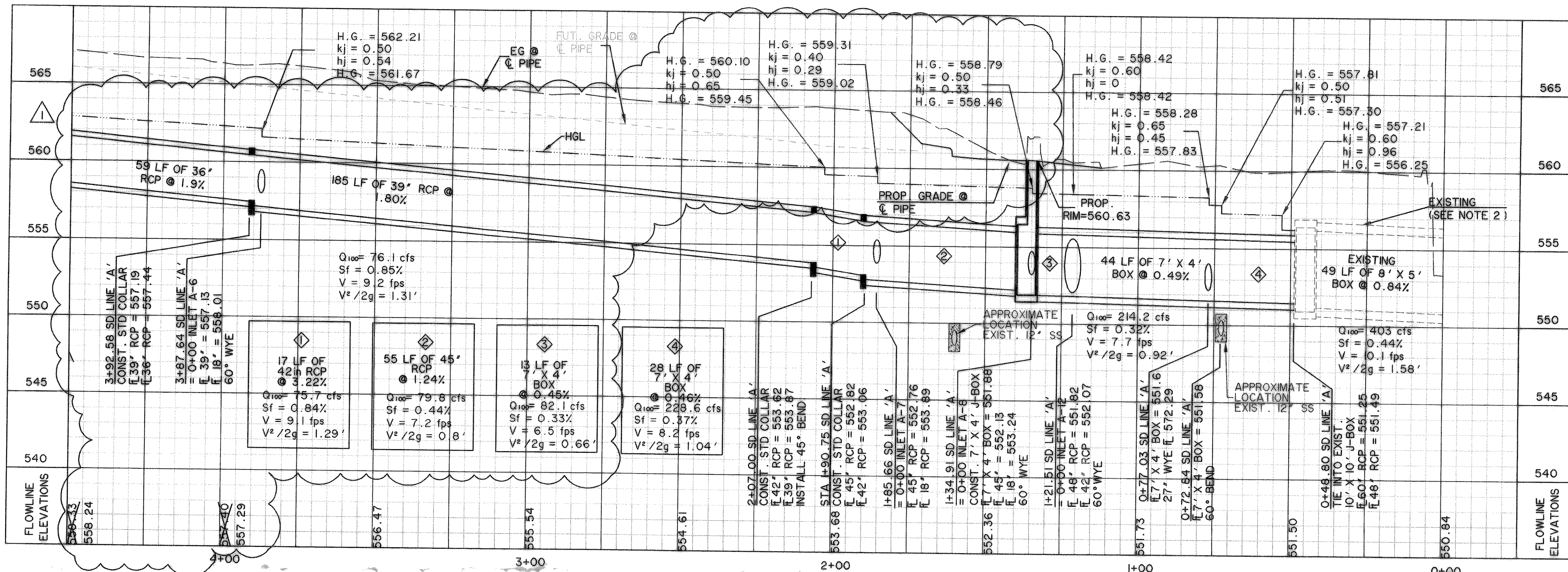
- 1) CUT IN THE END OF THE SOUTH CURB OF WHITMORE DRIVE LOCATED APPROX 30' EAST OF INTERSECTION OF WHITMORE DRIVE AND TOWNSEND DRIVE.  
ELEVATION 565.24
- 2) CUT IN THE NORTHWEST CORNER OF CURB INLET IN THE WEST CURB LINE OF INDUSTRIAL BLVD APPROX 85' NORTH FROM THE INTERSECTION OF PROPOSED WHITMORE DRIVE AND INDUSTRIAL BLVD.  
ELEVATION 561.28

**NOTE:**

- 1) CONTRACTOR SHALL FIELD VERIFY LOCATIONS OF EXISTING DRAINAGE INFRASTRUCTURE PRIOR TO CONSTRUCTION AND NOTIFY ENGINEER OF ANY DISCREPANCIES.
- 2) EXISTING 8' X 5' BOX CULVERT INCLUDED TO TIE INTO DOWNSTREAM HYDRAULIC CONDITIONS.
- 3) SEE PAVING SHEET P109 FOR DETAILS ON CONC. REMOVAL AND REPLACEMENT.

**RECORD  
DRAWING  
2/18/09**

**STORM DRAIN LINE "A"**

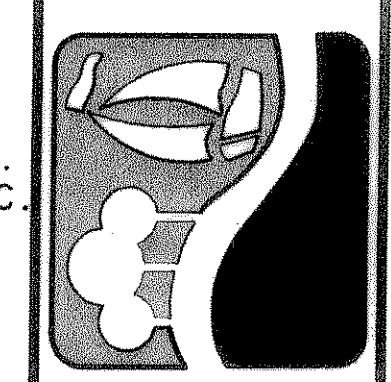


**LEGEND**

- STORM DRAIN LINE
- R.O.W. LINE
- FUTURE CURB
- EXISTING STORM DRAIN
- STORM DRAIN INLET
- DIRECTION OF FLOW
- JUNCTION BOX
- CONC. ENCASING

RELOCATE SD LAT 'A-6' TO STA 3+87.64 SD LINE 'A' SEE SHEET D102  
REVISED 12/27/2006

PREPARED BY:  
**WIA WIER & ASSOCIATES, INC.**  
ENGINEERS SURVEYORS LAND PLANNERS  
701 HIGHLANDER BLVD., SUITE 300 ARLINGTON, TEXAS 76010 METRO (817)467-7700  
6840 ELM STREET FRISCO, TEXAS 75034 METRO (214)387-8000  
www.wierassociates.com



**CITY OF  
ROCKWALL  
JUSTIN ROAD  
EXTENSION**

**STORM DRAIN LINE 'A'  
PLAN AND PROFILE  
STA 0+00 TO 4+50**

STATE OF TEXAS  
REGISTERED PROFESSIONAL ENGINEER  
RONALD RAMIREZ  
81821  
WIER & ASSOCIATES, INC.  
LAST SHEET EDIT  
DATE 02-18-2009  
WA# 04124\_01  
**SHEET NO.  
D103**