

**CAUTION !!!**  
UNDERGROUND UTILITIES

EXISTING UTILITIES AND UNDERGROUND FACILITIES INDICATED ON THESE PLANS HAVE BEEN LOCATED FROM REFERENCE INFORMATION SUPPLIED BY VARIOUS OWNERS OF THE FACILITIES. THE ENGINEER DOES NOT ACCEPT THE RESPONSIBILITY FOR THE UTILITY LOCATIONS SHOWN. IT SHALL BE THE RESPONSIBILITY OF THE CONTRACTOR TO VERIFY BOTH HORIZONTALLY AND VERTICALLY THE LOCATION OF ALL EXISTING UTILITIES AND UNDERGROUND FACILITIES PRIOR TO CONSTRUCTION. TO TAKE NECESSARY PRECAUTIONS IN ORDER TO PROTECT ALL FACILITIES ENCOUNTERED, AND TO NOTIFY THE ENGINEER PROMPTLY OF ALL CONFLICTS OF THE WORK WITH EXISTING FACILITIES. THE CONTRACTOR SHALL PRESERVE AND PROTECT ALL EXISTING UTILITIES FROM DAMAGE DURING CONSTRUCTION. ANY DAMAGE BY THE CONTRACTOR TO EXISTING UTILITIES SHALL BE REPAIRED BY THE CONTRACTOR AT HIS EXPENSE.

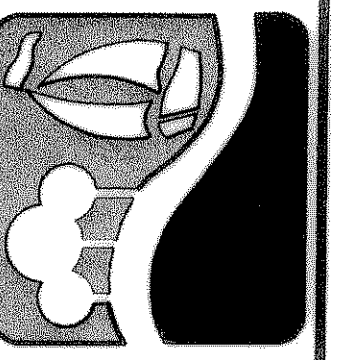
**BENCHMARKS:**

- 1. CUT IN THE END OF THE SOUTH CURB OF CURB INLET IN THE WEST CURB LINE OF INDUSTRIAL BLVD APPROX 85' NORTH FROM THE INTERSECTION OF PROPOSED WHITMORE DRIVE AND TOWNSEND DRIVE.  
ELEVATION 565.24
- 2. CUT IN THE NORTHWEST CORNER OF CURB INLET IN THE WEST CURB LINE OF INDUSTRIAL BLVD APPROX 85' NORTH FROM THE INTERSECTION OF PROPOSED WHITMORE DRIVE AND INDUSTRIAL BLVD.  
ELEVATION 561.28

NOTE: CONTRACTOR SHALL FIELD VERIFY LOCATIONS OF EXISTING DRAINAGE INFRASTRUCTURE PRIOR TO CONSTRUCTION AND NOTIFY ENGINEER OF ANY DISCREPANCIES.



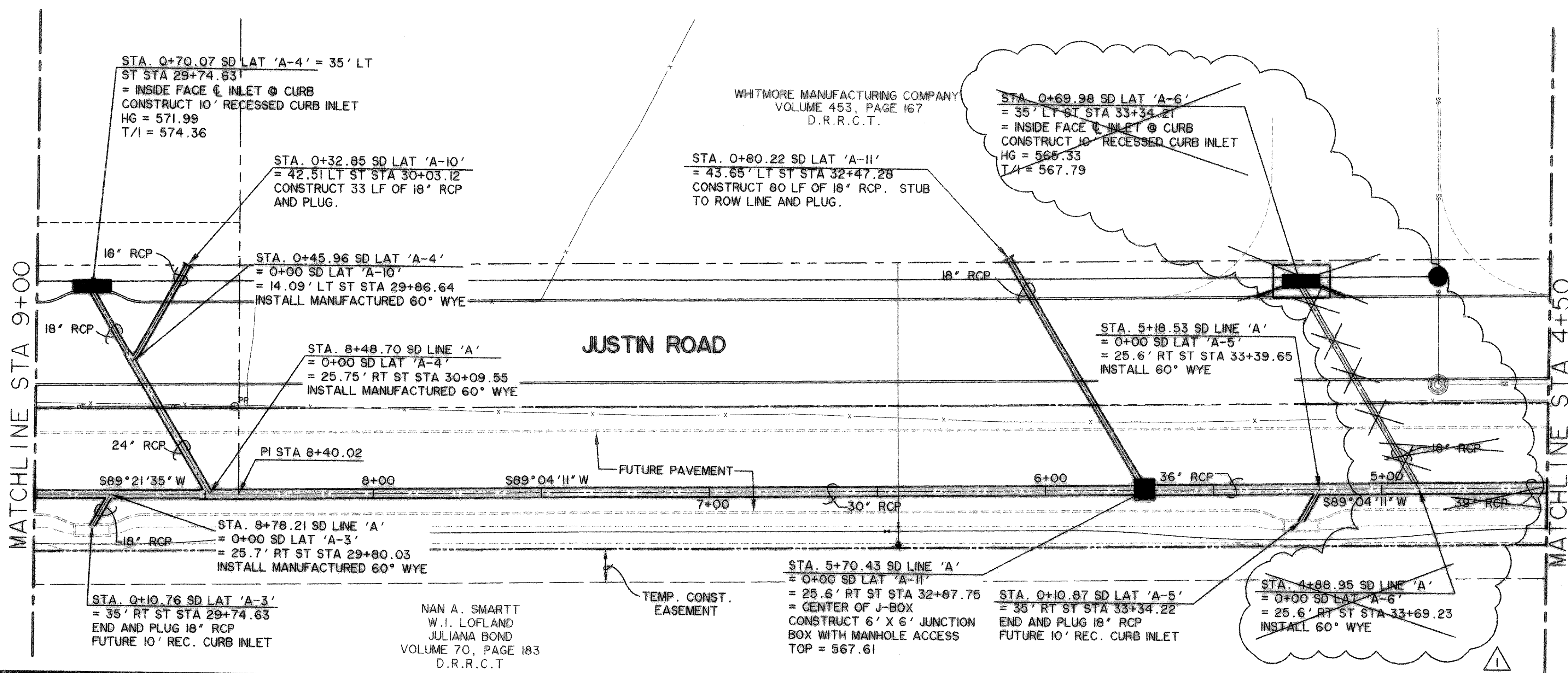
PREPARED BY:  
**WIA WIER & ASSOCIATES, INC.**  
ENGINEERS SURVEYORS LAND PLANNERS  
701 HIGHLANDER BLVD., SUITE 300 ARLINGTON, TEXAS 76015 METRO (817)467-7700  
6848 ELM STREET FRISCO, TEXAS 75034 METRO (214)387-8000  
www.wierassociates.com



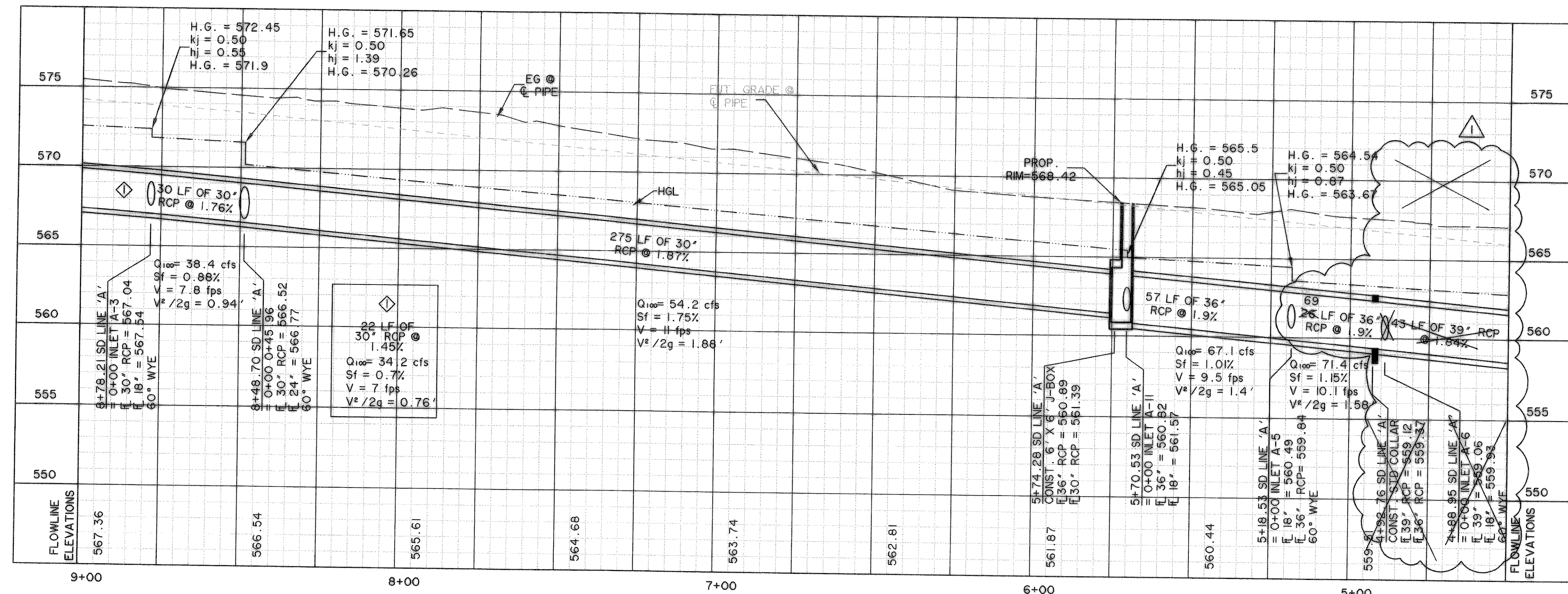
**CITY OF ROCKWALL JUSTIN ROAD EXTENSION**

**STORM DRAIN LINE 'A' PLAN AND PROFILE STA 4+50 TO 9+00**

STATE OF TEXAS  
REGISTERED PROFESSIONAL ENGINEER  
RONALD RAMIREZ  
61821  
WIER & ASSOCIATES, INC.  
LAST SHEET EDIT DATE 02-18-2009  
WA# 04124.01  
SHEET NO. D102



**STORM DRAIN LINE "A"**



- LEGEND**
- STORM DRAIN LINE
  - - - R.O.W. LINE
  - - - FUTURE CURB
  - - - EXISTING STORM DRAIN
  - STORM DRAIN INLET
  - DIRECTION OF FLOW

RELOCATE SD LAT 'A-6' TO STA 3+87.64 SD LINE 'A' SEE SHEET D103  
REVISED 12/27/2006

**RECORD DRAWING**  
2/18/09

TIME 10:01 FILE: SD LINE A-2-04124\_01\_REV-01.dwg