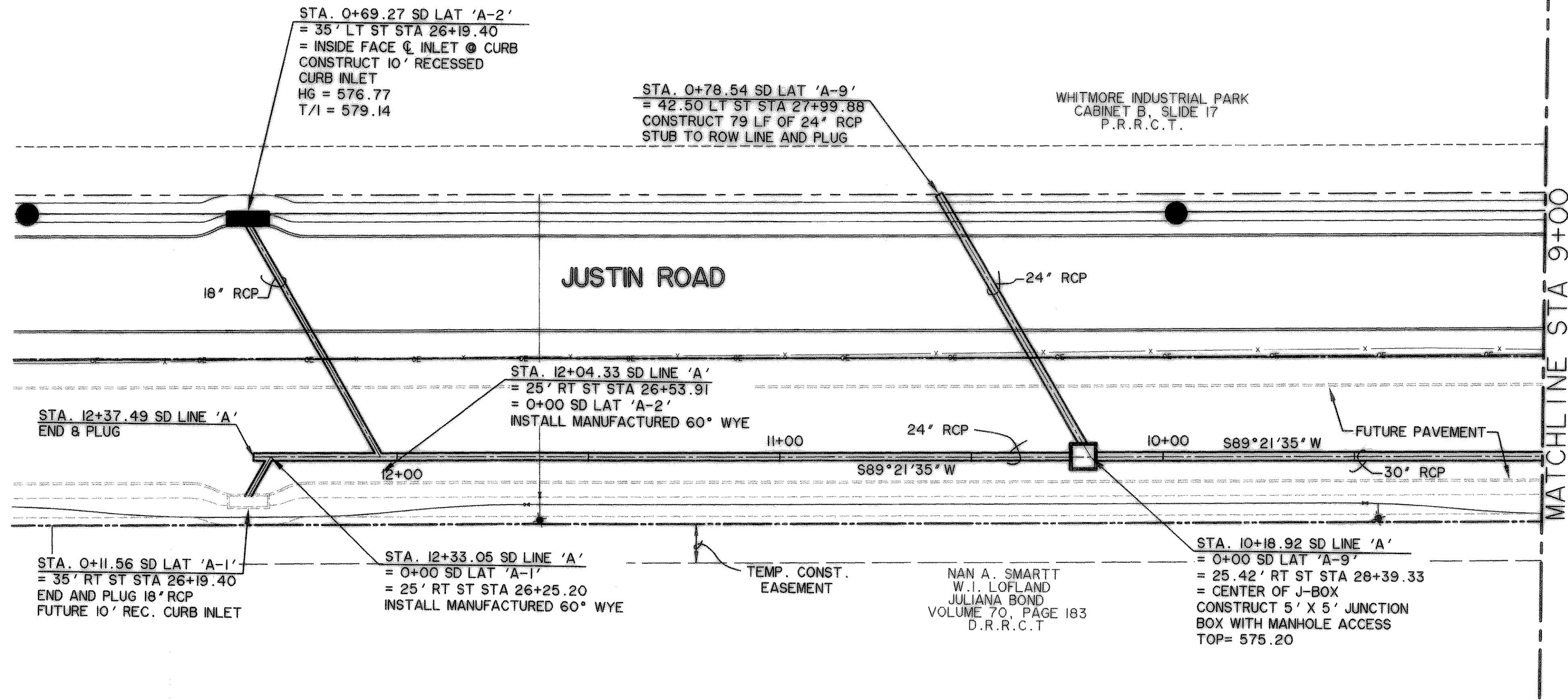


TIME 10:01 FILE: SD LI LINE A-1-04124-01.dwg

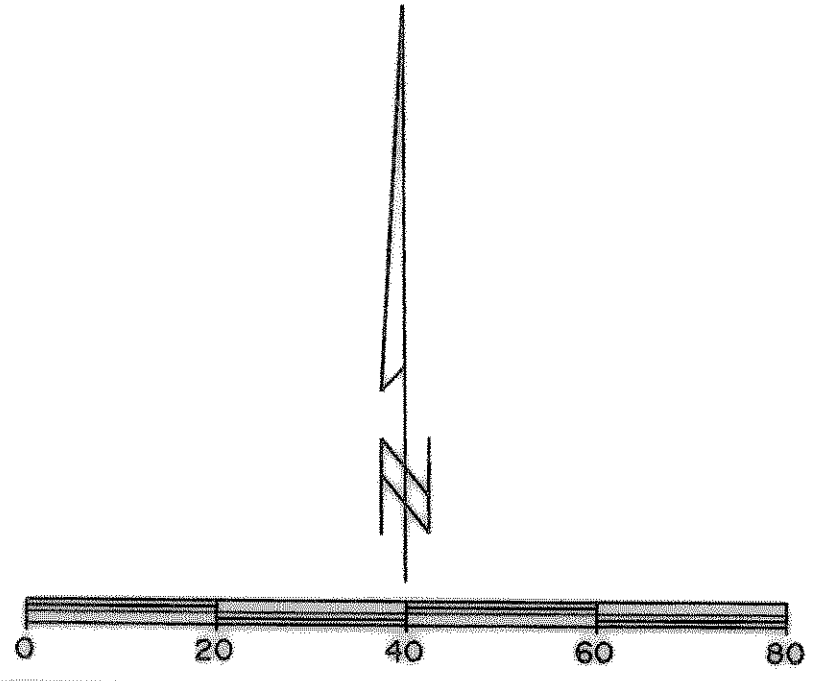


BENCHMARKS:

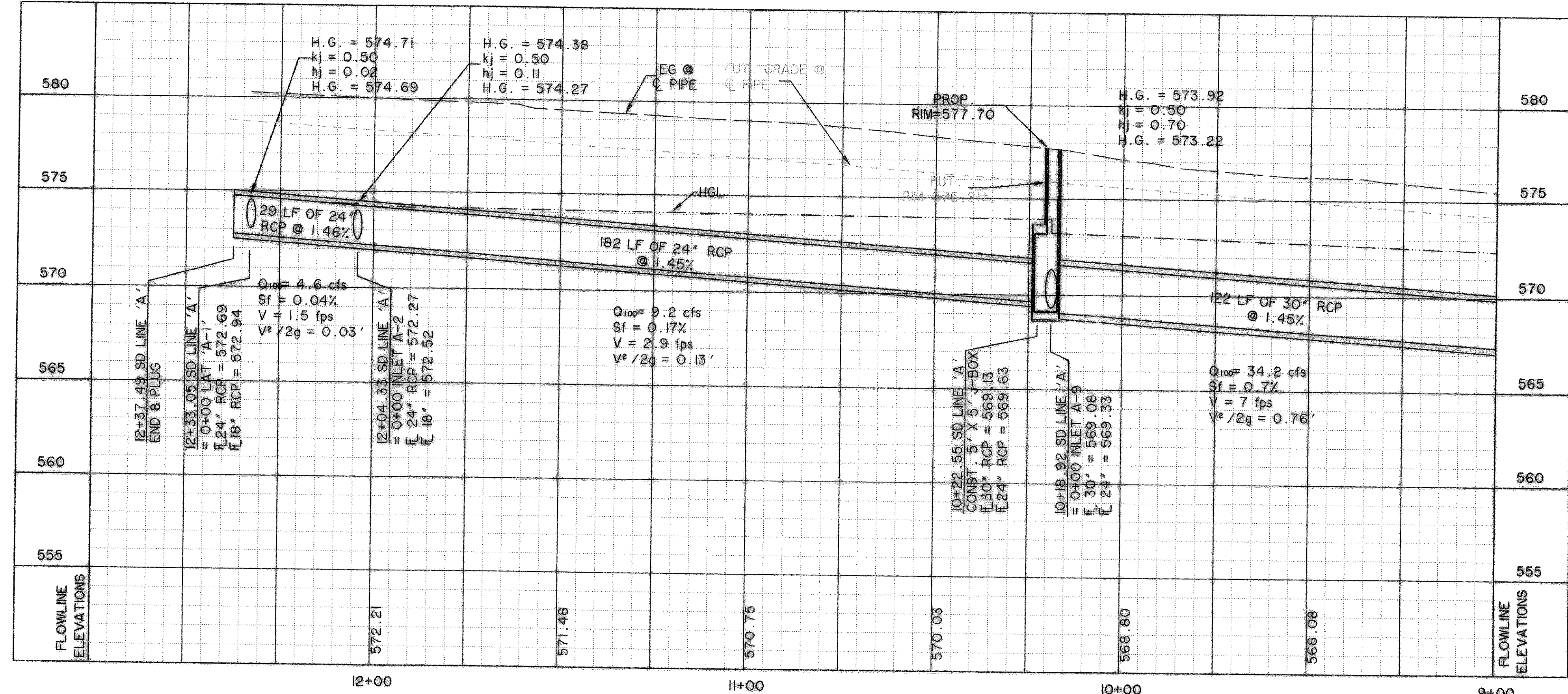
"□" CUT IN THE END OF THE SOUTH CURB OF WHITMORE DRIVE LOCATED APPROX 30' EAST OF INTERSECTION OF WHITMORE DRIVE AND TOWNSEND DRIVE.
ELEVATION 565.24

"□" CUT IN THE NORTHWEST CORNER OF CURB INLET IN THE WEST CURB LINE OF INDUSTRIAL BLVD APPROX 85' NORTH FROM THE INTERSECTION OF PROPOSED WHITMORE DRIVE AND INDUSTRIAL BLVD.
ELEVATION 561.28

NOTE: CONTRACTOR SHALL FIELD VERIFY LOCATIONS OF EXISTING DRAINAGE INFRASTRUCTURE PRIOR TO CONSTRUCTION AND NOTIFY ENGINEER OF ANY DISCREPANCIES.



STORM DRAIN LINE "A"

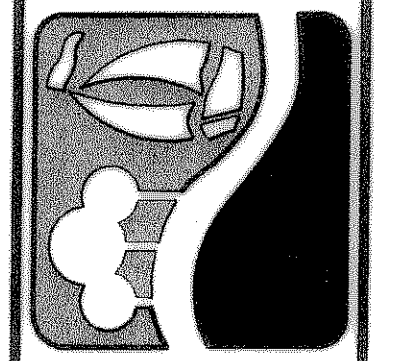


LEGEND

- STORM DRAIN LINE
- R.O.W. LINE
- FUTURE CURB
- EXISTING STORM DRAIN
- STORM DRAIN INLET
- DIRECTION OF FLOW

RECORD DRAWING
2/18/09

PREPARED BY:
WIER & ASSOCIATES, INC.
ENGINEERS SURVEYORS LAND PLANNERS
701 HIGHLANDER BLVD., SUITE 300 ARLINGTON, TEXAS 76015 METRO (817)467-7700
6809 ELM STREET FRISCO, TEXAS 75034 METRO (214)387-8000
www.WierAssociates.com



**CITY OF ROCKWALL
JUSTIN ROAD
EXTENSION**

**STORM DRAIN LINE 'A'
PLAN AND PROFILE
STA 9+00 TO 12+34.73**

STATE OF TEXAS
REGISTERED PROFESSIONAL ENGINEER
RONALD RAMIREZ
81821
COPYRIGHT © WIER & ASSOCIATES, INC.
LAST SHEET EDIT DATE 02-18-2009
WA# 04124-01
SHEET NO. D101