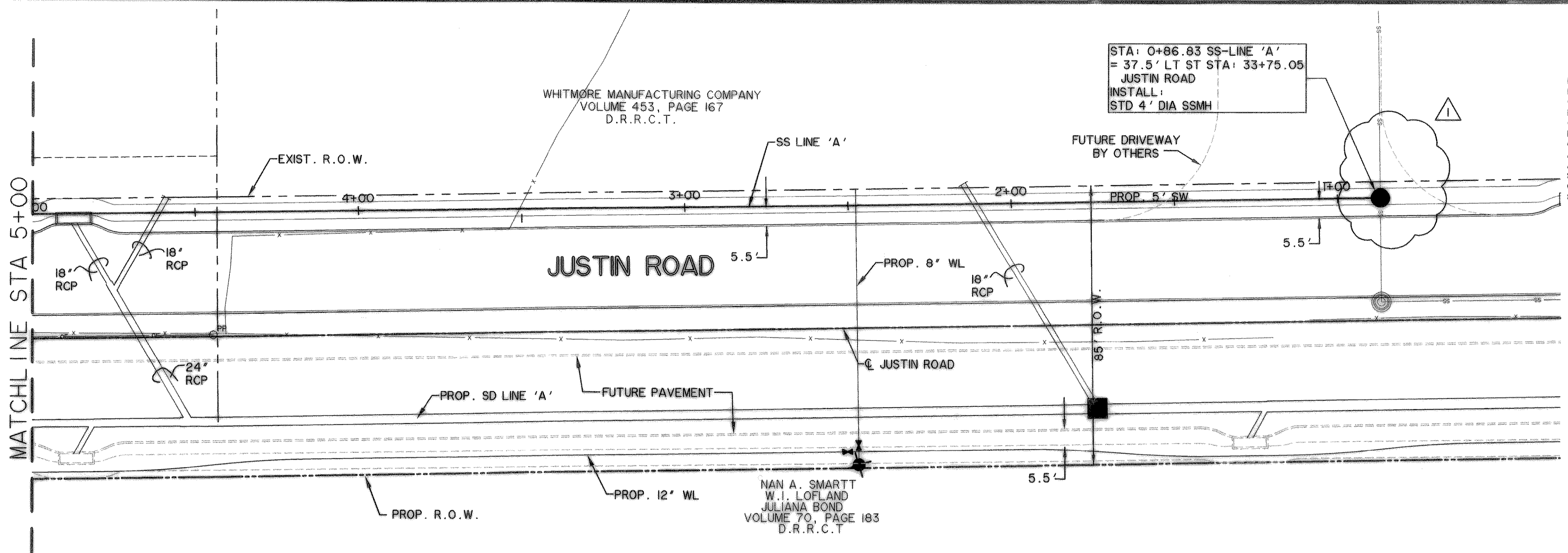
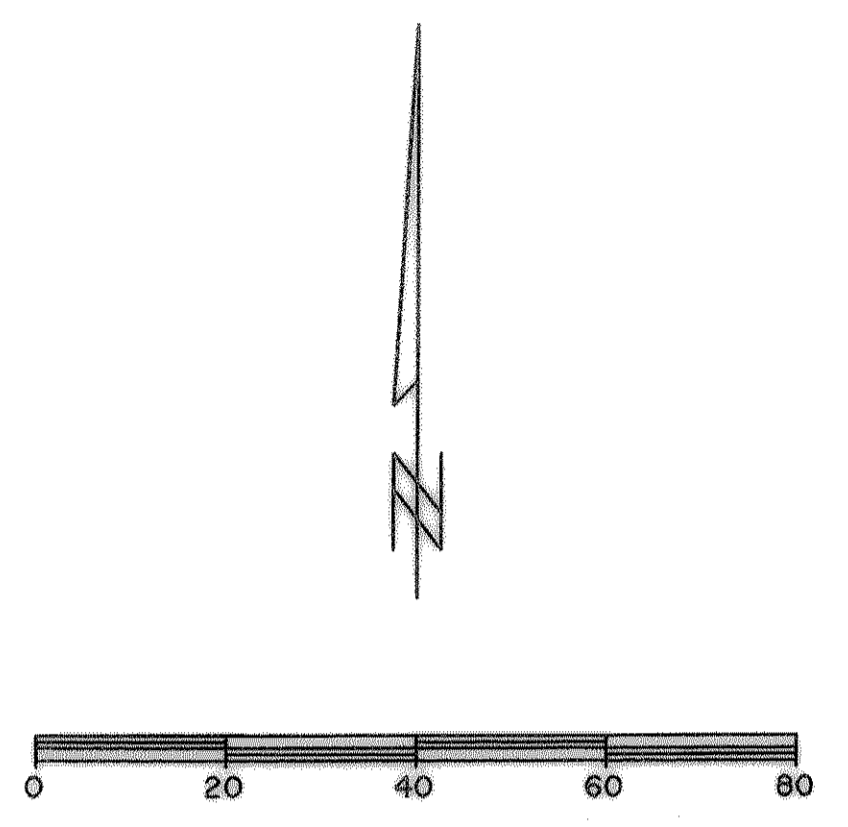


TIME: 10:57 FILE: SS-3-04124_01_REV-01.dwg

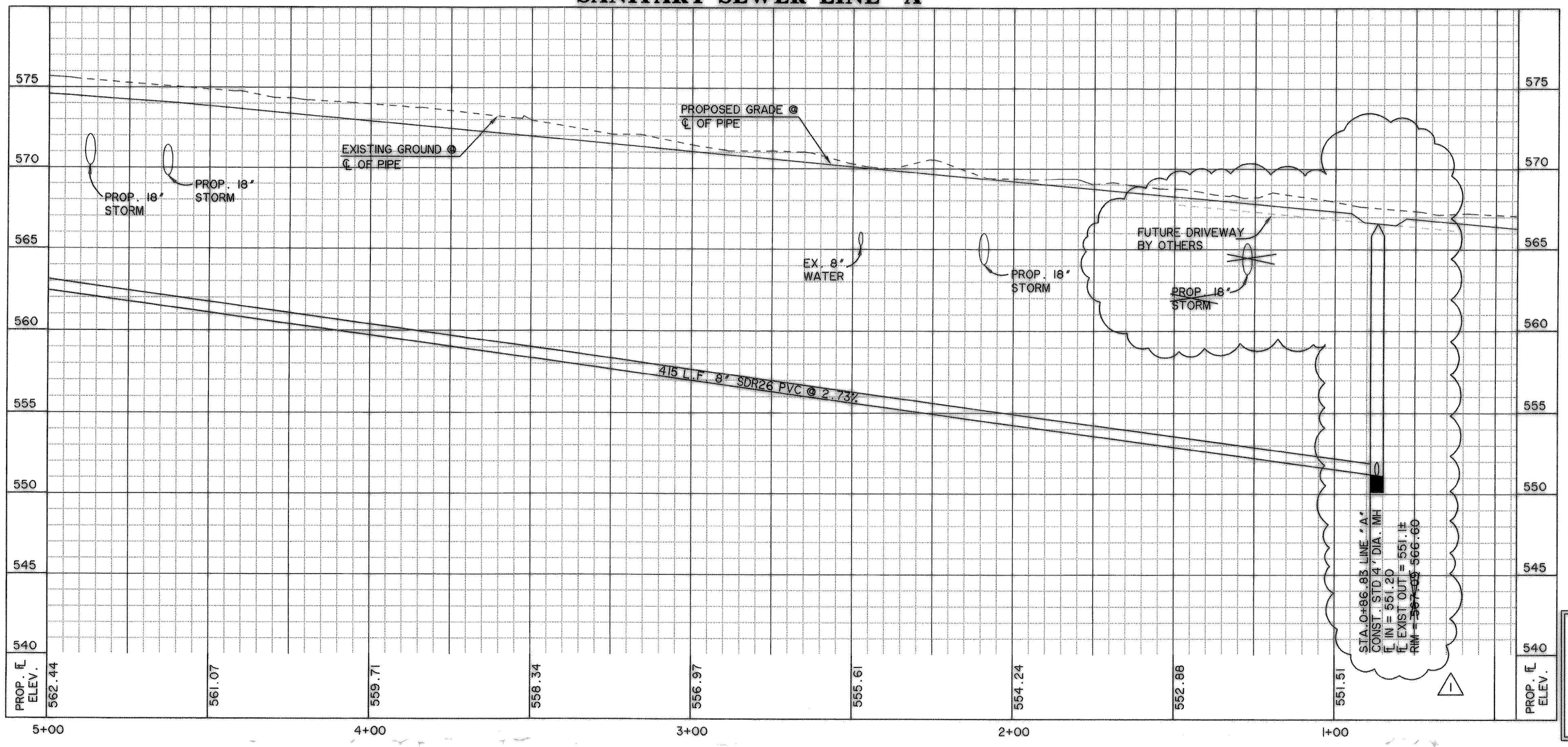


CAUTION !!!
UNDERGROUND UTILITIES

EXISTING UTILITIES AND UNDERGROUND FACILITIES INDICATED ON THESE PLANS HAVE BEEN LOCATED FROM REFERENCE INFORMATION SUPPLIED BY VARIOUS OWNERS OF THE FACILITIES. THE ENGINEER DOES NOT ACCEPT THE RESPONSIBILITY FOR THE UTILITY LOCATIONS SHOWN. IT SHALL BE THE RESPONSIBILITY OF THE CONTRACTOR TO VERIFY BOTH HORIZONTALLY AND VERTICALLY THE LOCATION OF ALL EXISTING UTILITIES AND UNDERGROUND FACILITIES PRIOR TO CONSTRUCTION. TO TAKE NECESSARY PRECAUTIONS IN ORDER TO PROTECT ALL FACILITIES ENCOUNTERED, AND TO NOTIFY THE ENGINEER PROMPTLY OF ALL CONFLICTS OF THE WORK WITH EXISTING FACILITIES. THE CONTRACTOR SHALL PRESERVE AND PROTECT ALL EXISTING UTILITIES FROM DAMAGE DURING CONSTRUCTION. ANY DAMAGE BY THE CONTRACTOR TO EXISTING UTILITIES SHALL BE REPAIRED BY THE CONTRACTOR AT HIS EXPENSE.



SANITARY SEWER LINE "A"



LEGEND

- BUILDING LINE
- W WATER LINE
- SS SANITARY SEWER LINE
- R.O.W. LINE
- FIRE HYDRANT
- STORM DRAIN INLET
- SANITARY SEWER MANHOLE
- ⊗ VALVES
- LOT LINE
- DIRECTION OF FLOW
- VG VALLEY GUTTER

BENCHMARKS:

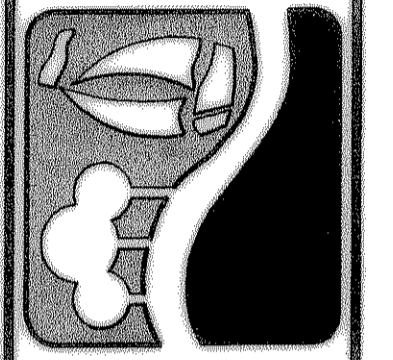
□ CUT IN THE END OF THE SOUTH CURB OF WHITMORE DRIVE LOCATED APPROX 30' EAST OF INTERSECTION OF WHITMORE DRIVE AND TOWNSEND DRIVE.
ELEVATION 565.24

□ CUT IN THE NORTHWEST CORNER OF CURB INLET IN THE WEST CURB LINE OF INDUSTRIAL BLVD APPROX 85' NORTH FROM THE INTERSECTION OF PROPOSED WHITMORE DRIVE AND INDUSTRIAL BLVD.
ELEVATION 561.28

▲ REVISED RIM ELEVATION FOR MANHOLE AT STA 0+86.83
REVISED 12/27/2006

RECORD DRAWING
2/18/09

PREPARED BY:
WIA WIER & ASSOCIATES, INC.
ENGINEERS SURVEYORS LAND PLANNERS
701 HIGHLANDER BLVD., SUITE 300 ARLINGTON, TEXAS 76015 METRO (817)467-7700
6848 ELM STREET FRESNO, TEXAS 75034 METRO (214)387-8000
www.wierassociates.com



**CITY OF ROCKWALL
JUSTIN ROAD
EXTENSION**

**SEWER LINE 'A'
PLAN AND PROFILE
STA 0+86.83 TO STA 5+00**

STATE OF TEXAS
REGISTERED PROFESSIONAL ENGINEER
RONALD FARRER
81821

Copyright ©
WIER & ASSOCIATES, INC.
LAST SHEET EDIT
DATE 02-18-2009
WA# 04124.01

SHEET NO. U203