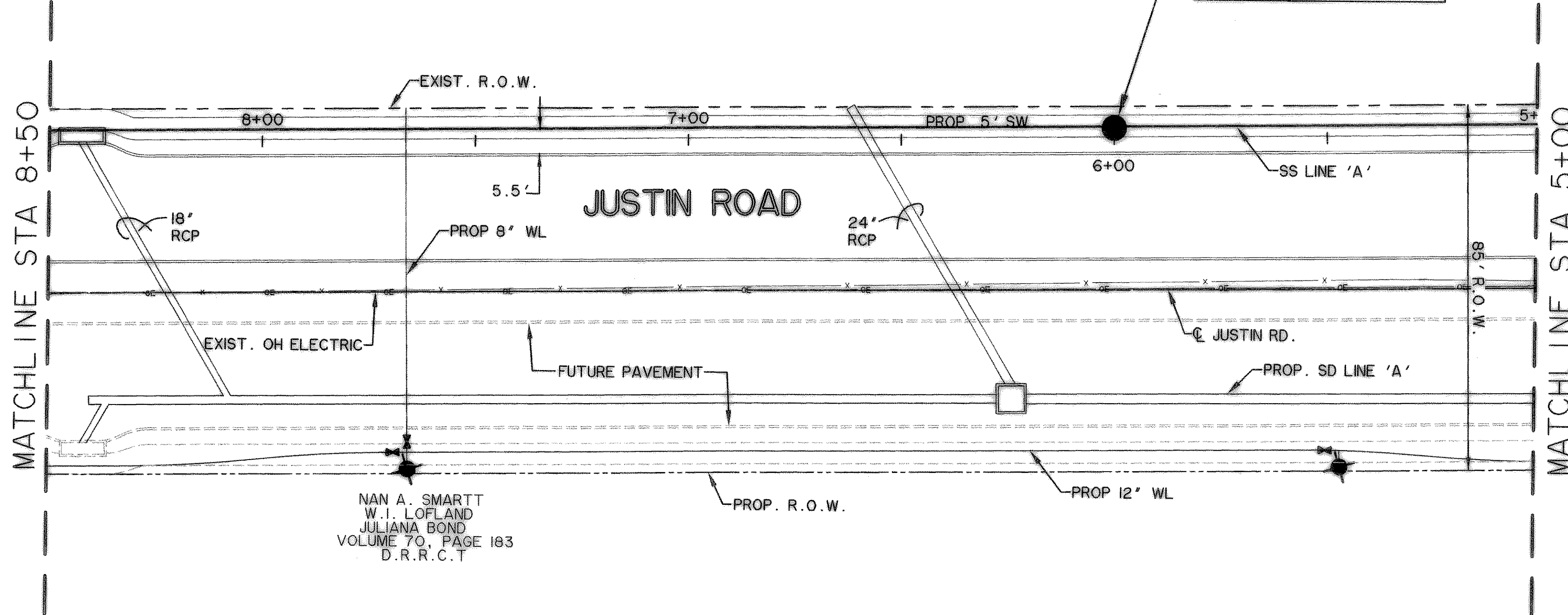


WHITMORE MANUFACTURING COMPANY  
VOLUME 453, PAGE 167  
D.R.R.C.T.

STA 6+00 SS LINE 'A'  
= 37.5' LT ST STA 28+61.80  
JUSTIN ROAD  
INSTALL:  
STD 4' DIA SSMH



NAN A. SMARTT  
W.I. LOFLAND  
JULIANA BOND  
VOLUME 70, PAGE 103  
D.R.R.C.T.

LEGEND

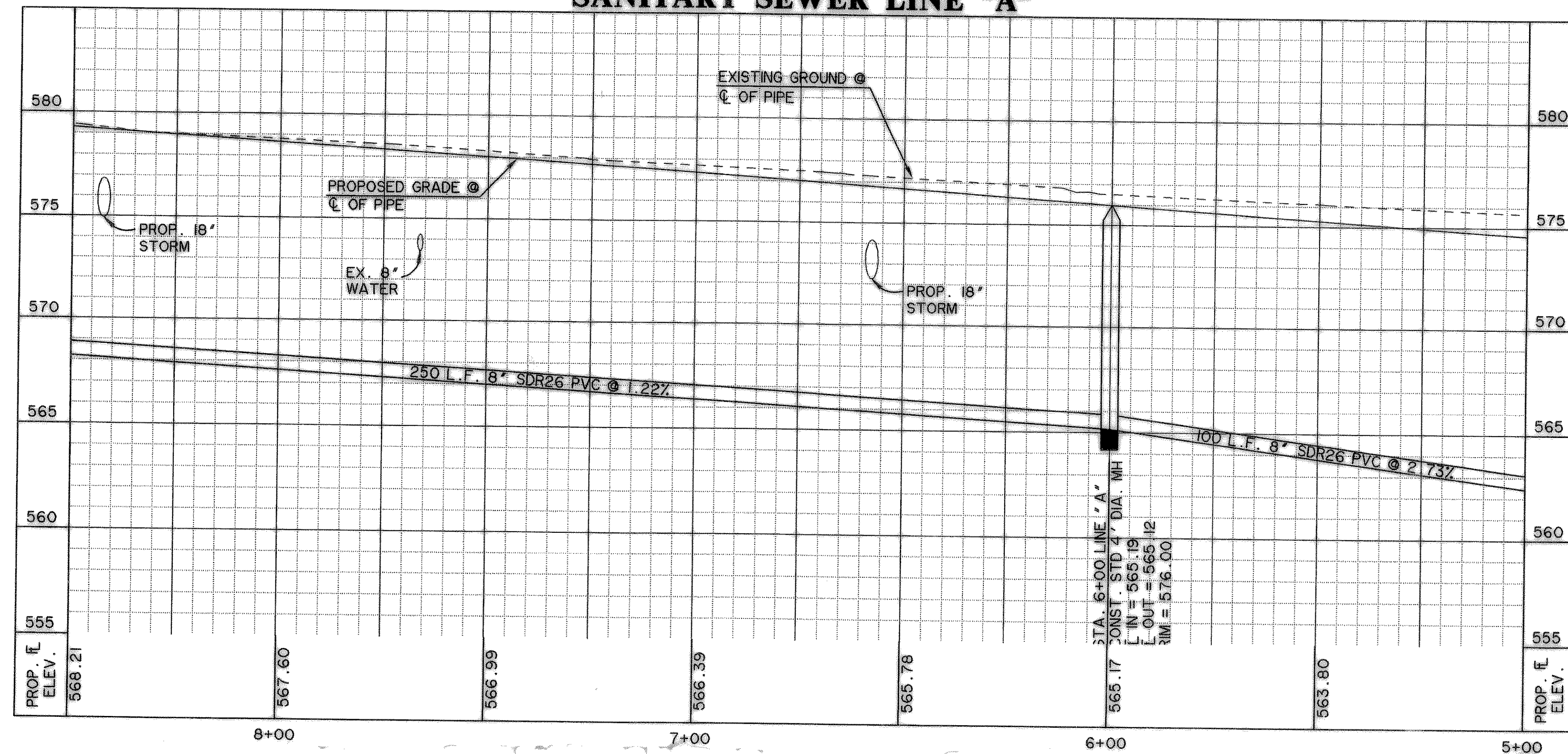
---	BUILDING LINE
W	WATER LINE
SS	SANITARY SEWER LINE
---	R.O.W. LINE
+	FIRE HYDRANT
■	STORM DRAIN INLET
○	SANITARY SEWER MANHOLE VALVES
---	LOT LINE
→	DIRECTION OF FLOW
VG	VALLEY GUTTER

**CAUTION !!**  
EXISTING UTILITIES ARE INDICATED ON THE PLANS FROM AVAILABLE INFORMATION. IT SHALL BE THE RESPONSIBILITY OF THE CONTRACTOR TO VERIFY THE LOCATION OF ALL UTILITIES, TO NOTIFY ALL UTILITY COMPANIES OF THE CONTRACTORS OPERATIONS, TO PROTECT ALL UTILITIES FROM DAMAGE, TO REPAIR ALL UTILITIES DAMAGED DUE TO THE CONTRACTORS OPERATIONS, AND TO NOTIFY THE ENGINEER PROMPTLY OF ALL CONFLICTS OF THE WORK WITH EXISTING UTILITIES.

**BENCHMARKS:**  
"□" CUT IN THE END OF THE SOUTH CURB OF WHITMORE DRIVE LOCATED APPROX 30' EAST OF INTERSECTION OF WHITMORE DRIVE AND TOWNSEND DRIVE.  
ELEVATION 565.24  
"□" CUT IN THE NORTHWEST CORNER OF CURB INLET IN THE WEST CURB LINE OF INDUSTRIAL BLVD APPROX 85' NORTH FROM THE INTERSECTION OF PROPOSED WHITMORE DRIVE AND INDUSTRIAL BLVD.  
ELEVATION 561.28

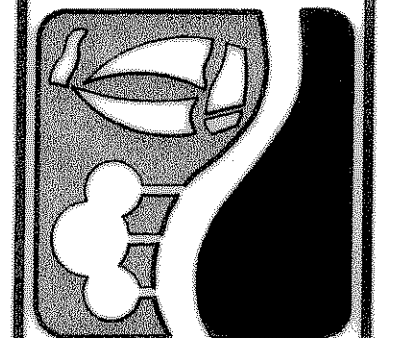


**SANITARY SEWER LINE "A"**



**RECORD  
DRAWING  
2/18/09**

PREPARED BY:  
**WIA WIER & ASSOCIATES, INC.**  
ENGINEERS SURVEYORS LAND PLANNERS  
701 HIGHLANDER BLVD., SUITE 300 ARLINGTON, TEXAS 76015 METRO (817)467-7700  
6849 ELM STREET FRISCO, TEXAS 75034 METRO (214)387-8000  
www.WierAssociates.com



**CITY OF  
ROCKWALL  
JUSTIN ROAD  
EXTENSION**

**SEWER LINE 'A'  
PLAN AND PROFILE  
STA 5+00 TO STA 8+50**

STATE OF TEXAS  
REGISTERED PROFESSIONAL ENGINEER  
RONALD RAMIREZ  
81821  
SIGNED: *Ronald Ramirez*  
DATE: 2/18/09  
COPYRIGHT © WIER & ASSOCIATES, INC.  
LAST SHEET EDIT DATE 02-18-2009  
WA# 04124.01  
**SHEET NO. U202**

TIME: 10:56 FILE: SS-2-04124\_01.dwg