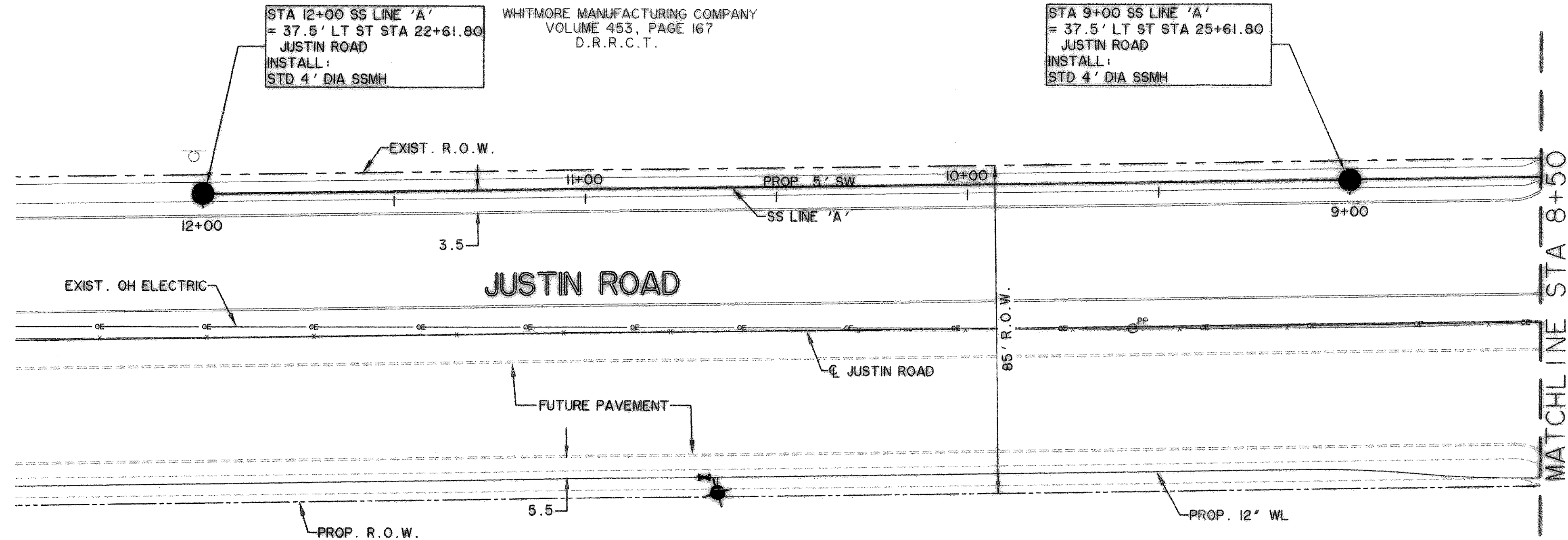


TIME 10:55 FILE: SS-1-04124_01.dwg



LEGEND

---	BUILDING LINE
W	WATER LINE
SS	SANITARY SEWER LINE
- - -	R.O.W. LINE
⊕	FIRE HYDRANT
⊕	STORM DRAIN INLET
⊕	SANITARY SEWER MANHOLE VALVES
---	LOT LINE
→	DIRECTION OF FLOW
VG	VALLEY GUTTER

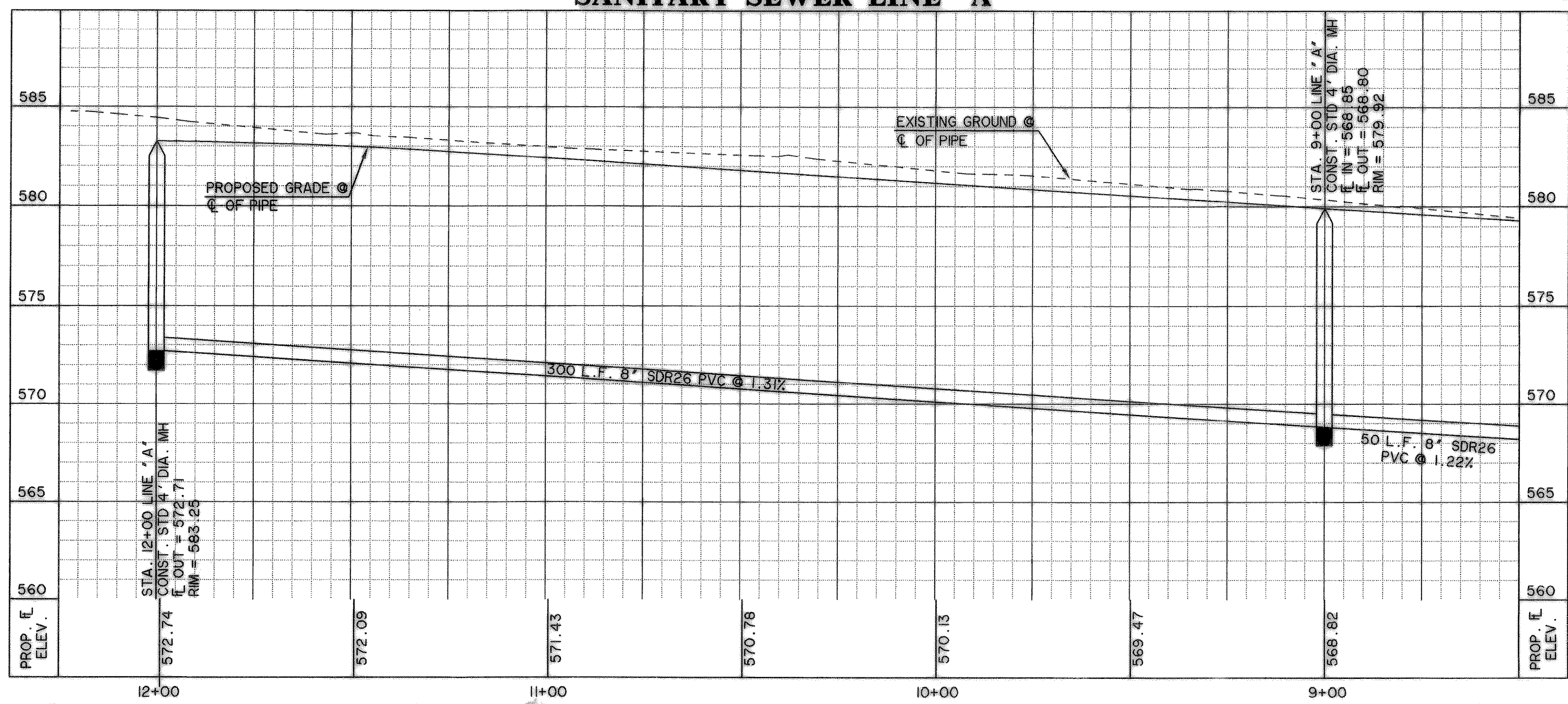
CAUTION !!
 EXISTING UTILITIES ARE INDICATED ON THE PLANS FROM AVAILABLE INFORMATION. IT SHALL BE THE RESPONSIBILITY OF THE CONTRACTOR TO VERIFY THE LOCATION OF ALL UTILITIES, TO NOTIFY ALL UTILITY COMPANIES OF THE CONTRACTORS OPERATIONS, TO PROTECT ALL UTILITIES FROM DAMAGE, TO REPAIR ALL UTILITIES DAMAGED DUE TO THE CONTRACTORS OPERATIONS, AND TO NOTIFY THE ENGINEER PROMPTLY OF ALL CONFLICTS OF THE WORK WITH EXISTING UTILITIES.

BENCHMARKS:
 "□" CUT IN THE END OF THE SOUTH CURB OF WHITMORE DRIVE LOCATED APPROX 30' EAST OF INTERSECTION OF WHITMORE DRIVE AND TOWNSEND DRIVE.
 ELEVATION 565.24
 "□" CUT IN THE NORTHWEST CORNER OF CURB INLET IN THE WEST CURB LINE OF INDUSTRIAL BLVD APPROX 85' NORTH FROM THE INTERSECTION OF PROPOSED WHITMORE DRIVE AND INDUSTRIAL BLVD.
 ELEVATION 561.28

NAN A. SMARTT
 W.I. LOFLAND
 JULIANA BOND
 VOLUME 70, PAGE 183
 D.R.R.C.T.

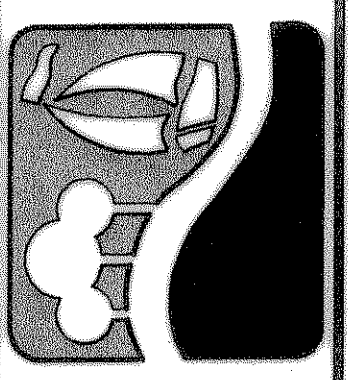
WHITMORE MANUFACTURING COMPANY
 VOLUME 453, PAGE 167
 D.R.R.C.T.

SANITARY SEWER LINE "A"



**RECORD
 DRAWING
 2/18/09**

PREPARED BY:
WIER & ASSOCIATES, INC.
 ENGINEERS SURVEYORS LAND PLANNERS
 701 HIGHLANDER BLVD., SUITE 300 ARLINGTON, TEXAS 76015 METRO (817)467-7700
 6849 ELM STREET FRISCO, TEXAS 75034 METRO (214)387-8000
 www.WierAssociates.com



**CITY OF
 ROCKWALL
 JUSTIN ROAD
 EXTENSION**

**SEWER LINE 'A'
 PLAN AND PROFILE
 STA 8+50 TO STA 12+00**

STATE OF TEXAS
 RONALD RAMIREZ
 51821
 REGISTERED
 PROFESSIONAL ENGINEER
 Ronald Ramirez
 COPYRIGHT ©
 WIER & ASSOCIATES, INC.
 LAST SHEET EDIT
 DATE 02-18-2009
 WA# 04124_01
**SHEET NO.
 U201**