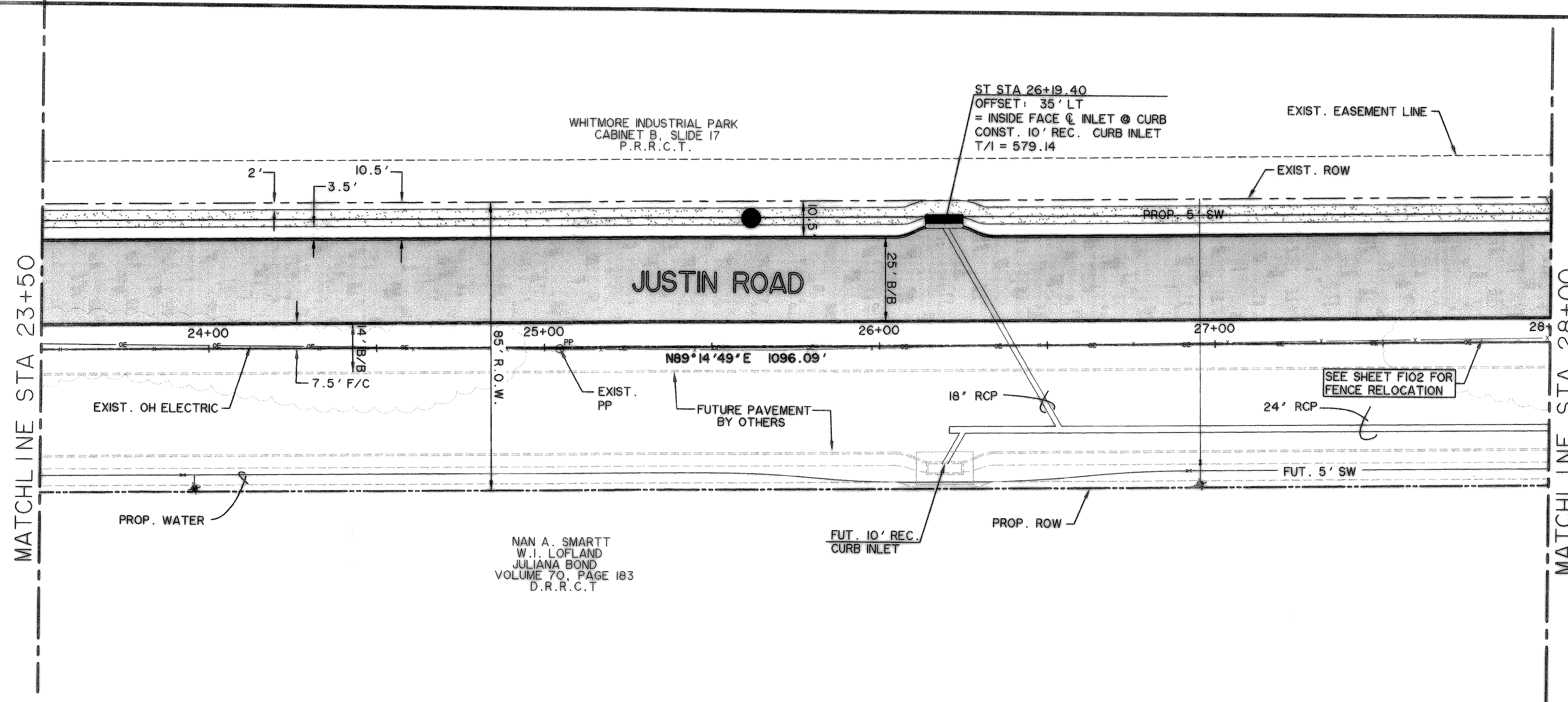


TIME: 12:55 FILE: PAVE-6-04124_01.dwg



LEGEND

- 4200 PSI CONCRETE PAVEMENT
- PROPOSED SIDEWALK
- LANDSCAPING
- EXISTING CURB
- FUTURE CURB
- PROPOSED CURB
- TEMPORARY ASPHALT CURB
- EXISTING TREE
- EXISTING TREE-LINE
- EXISTING WATER LINE
- EXISTING SANITARY SEWER LINE
- R.O.W. LINE
- FIRE HYDRANT
- STORM DRAIN INLET
- WATER VALVES
- DIRECTION OF FLOW
- EXISTING SIGN
- EXISTING OVERHEAD ELECTRIC
- EXISTING UNDERGROUND GAS
- EXISTING WATER VALVE
- EXISTING UNDERGROUND TELEPHONE
- BARRIER FREE RAMP TO BE CONST. W/PROJECT

* NOTE: MIN 6.5 SACK

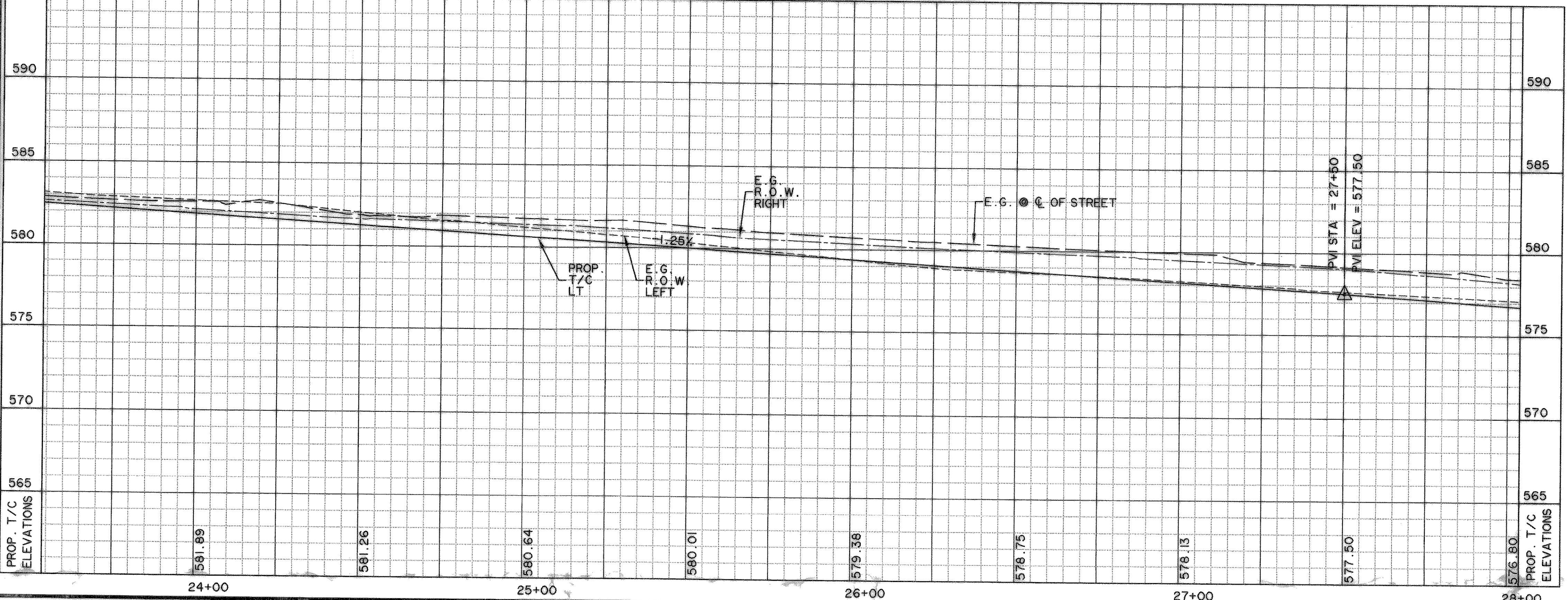


BENCHMARKS:

□ CUT IN THE END OF THE SOUTH CURB OF WHITMORE DRIVE LOCATED APPROX 30' EAST OF INTERSECTION OF WHITMORE DRIVE AND TOWNSEND DRIVE.
ELEVATION 565.24

□ CUT IN THE NORTHWEST CORNER OF CURB INLET IN THE WEST CURB LINE OF INDUSTRIAL BLVD APPROX 85' NORTH FROM THE INTERSECTION OF PROPOSED WHITMORE DRIVE AND INDUSTRIAL BLVD.
ELEVATION 561.28

JUSTIN ROAD



CAUTION !!

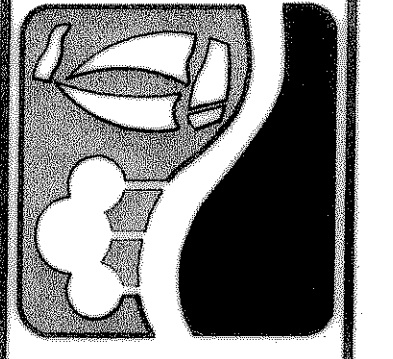
EXISTING UTILITIES ARE INDICATED ON THE PLANS FROM AVAILABLE INFORMATION. IT SHALL BE THE RESPONSIBILITY OF THE CONTRACTOR TO VERIFY THE LOCATION OF ALL UTILITIES, TO NOTIFY ALL UTILITY COMPANIES OF THE CONTRACTORS OPERATIONS, TO PROTECT ALL UTILITIES FROM DAMAGE, TO REPAIR ALL UTILITIES DAMAGED DUE TO THE CONTRACTORS OPERATIONS, AND TO NOTIFY THE ENGINEER PROMPTLY OF ALL CONFLICTS OF THE WORK WITH EXISTING UTILITIES.

NOTES:

- 1) REFER TO SHEET POOL FOR PAVING STRIPING/BUTTON DETAILS.
- 2) CONTRACTOR SHALL FIELD VERIFY LOCATIONS OF EXISTING DRAINAGE INFRASTRUCTURE PRIOR TO CONSTRUCTION AND NOTIFY ENGINEER OF ANY DISCREPANCIES.
- 3) CONTRACTOR SHALL COORDINATE RELOCATIONS WITH FRANCHISE UTILITIES AT LEAST THREE WEEKS PRIOR TO CONSTRUCTION. CONTRACTOR SHALL FIELD VERIFY UTILITY LOCATIONS AND ELEVATIONS AT CROSSINGS PRIOR TO CONSTRUCTION.

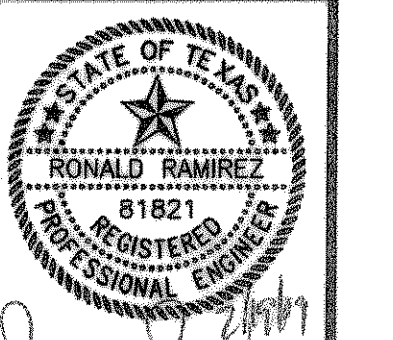
RECORD DRAWING
2/18/09

PREPARED BY:
WIER & ASSOCIATES, INC.
ENGINEERS SURVEYORS LAND PLANNERS
701 HIGHLANDER BLVD., SUITE 300 ARLINGTON, TEXAS 76015 METRO (817)467-7700
6840 ELM STREET FRISCO, TEXAS 75034 METRO (214)387-8000
www.wierassociates.com



**CITY OF
ROCKWALL
JUSTIN ROAD
EXTENSION**

**PAVING PLAN
AND PROFILE
STA 23+50 TO STA 28+00**



Copyright ©
WIER & ASSOCIATES, INC.
LAST SHEET EDIT
DATE 02-17-2009
WA# 04124_01
SHEET NO.
P106