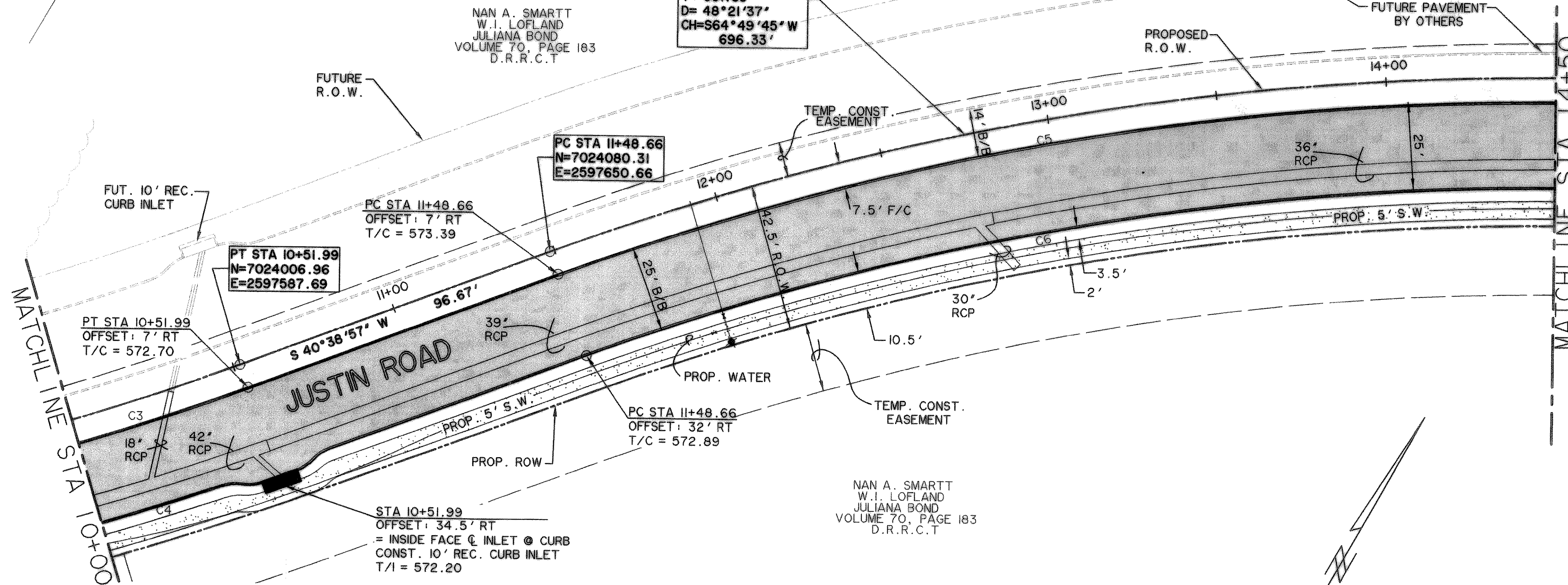


CURVE TABLE						
CURVE	RADIUS	DELTA	ARC	TANGENT	CHORD	BEARING
C3	857	21°39'02"	323.84	163.87	321.92	S51°28'28" W
C4	882	17°33'45"	270.35	136.24	269.29	S50°28'56" W
C5	843	23°55'08"	351.92	178.56	349.37	S52°36'31" W
C6	818	25°16'36"	360.87	183.42	357.95	S53°17'215" W

**Q CURVE DATA**  
 R= 850.00'  
 L= 717.44'  
 T= 381.65'  
 D= 48°21'37"  
 CH=S64°49'45" W  
 696.33'

NAN A. SMARTT  
 W.I. LOFLAND  
 JULIANA BOND  
 VOLUME 70, PAGE 183  
 D.R.R.C.T



**LEGEND**

- 4200 PSI CONCRETE PAVEMENT
- PROPOSED SIDEWALK
- LANDSCAPING
- EXISTING CURB
- FUTURE CURB
- PROPOSED CURB
- TEMPORARY ASPHALT CURB
- EXISTING TREE
- EXISTING TREE-LINE
- EXISTING WATER LINE
- EXISTING SANITARY SEWER LINE
- R.O.W. LINE
- FIRE HYDRANT
- STORM DRAIN INLET
- WATER VALVES
- DIRECTION OF FLOW
- EXISTING SIGN
- EXISTING OVERHEAD ELECTRIC
- EXISTING UNDERGROUND GAS
- EXISTING WATER VALVE
- EXISTING UNDERGROUND TELEPHONE
- BARRIER FREE RAMP TO BE CONST. W/PROJECT

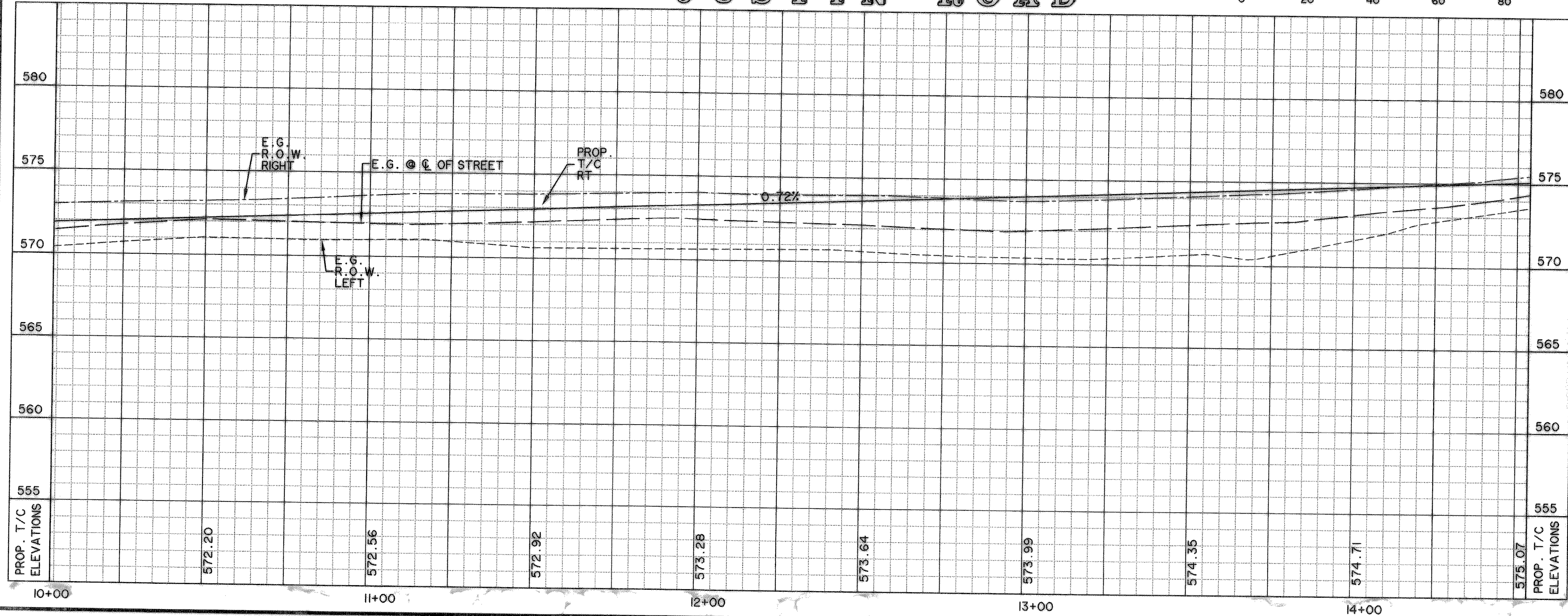
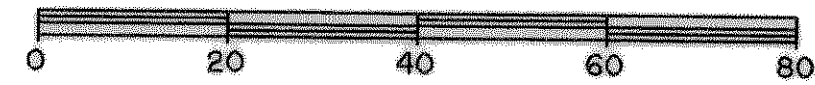
\* NOTE: MIN 6.5 SACK

**BENCHMARKS:**

1' CUT IN THE END OF THE SOUTH CURB OF WHITMORE DRIVE LOCATED APPROX 30' EAST OF INTERSECTION OF WHITMORE DRIVE AND TOWNSEND DRIVE.  
 ELEVATION 565.24

1' CUT IN THE NORTHWEST CORNER OF CURB INLET IN THE WEST CURB LINE OF INDUSTRIAL BLVD APPROX 85' NORTH FROM THE INTERSECTION OF PROPOSED WHITMORE DRIVE AND INDUSTRIAL BLVD.  
 ELEVATION 561.28

**JUSTIN ROAD**

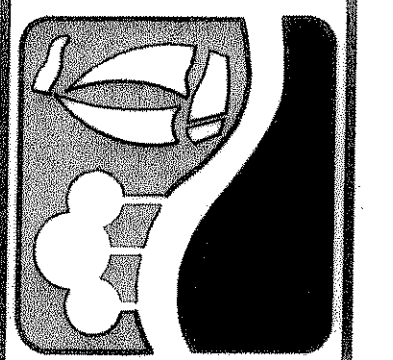


**CAUTION !!**  
 EXISTING UTILITIES ARE INDICATED ON THE PLANS FROM AVAILABLE INFORMATION. IT SHALL BE THE RESPONSIBILITY OF THE CONTRACTOR TO VERIFY THE LOCATION OF ALL UTILITIES, TO NOTIFY ALL UTILITY COMPANIES OF THE CONTRACTOR'S OPERATIONS, TO PROTECT ALL UTILITIES FROM DAMAGE, TO REPAIR ALL UTILITIES DAMAGED DUE TO THE CONTRACTOR'S OPERATIONS, AND TO NOTIFY THE ENGINEER PROMPTLY OF ALL CONFLICTS OF THE WORK WITH EXISTING UTILITIES.

- NOTES:**
- REFER TO SHEET POOL FOR PAVING STRIPING/BUTTON DETAILS.
  - CONTRACTOR SHALL FIELD VERIFY LOCATIONS OF EXISTING DRAINAGE INFRASTRUCTURE PRIOR TO CONSTRUCTION AND NOTIFY ENGINEER OF ANY DISCREPANCIES.
  - CONTRACTOR SHALL COORDINATE RELOCATIONS WITH FRANCHISE UTILITIES AT LEAST THREE WEEKS PRIOR TO CONSTRUCTION. CONTRACTOR SHALL FIELD VERIFY UTILITY LOCATIONS AND ELEVATIONS AT CROSSINGS PRIOR TO CONSTRUCTION.

**RECORD DRAWING**  
 2/18/09

PREPARED BY:  
**WIA WIER & ASSOCIATES, INC.**  
 ENGINEERS SURVEYORS LAND PLANNERS  
 701 HIGHLANDER BLVD., SUITE 300 ARLINGTON, TEXAS 76015 METRO (817)467-7700  
 6849 ELM STREET FRESNO, TEXAS 75034 METRO (214)387-8000  
 www.wierassociates.com



**CITY OF ROCKWALL JUSTIN ROAD EXTENSION**

**PAVING PLAN AND PROFILE**  
 STA 10+00 TO STA 14+50

STATE OF TEXAS  
 RONALD RAMIREZ  
 81821  
 REGISTERED PROFESSIONAL ENGINEER  
 Copyright © WIER & ASSOCIATES, INC.  
 LAST SHEET EDIT DATE 02-17-2009  
 WA# 04124.01  
**SHEET NO. P103**

TIME:12:44 FILE:PAVE-3-04124-01.dwg