

CURVE TABLE						
CURVE	RADIUS	DELTA	ARC	TANGENT	CHORD	BEARING
C3	857	21°39'02"	323.84	163.87	321.92	S51°28'28"W
C4	882	17°33'45"	270.35	136.24	269.29	S50°28'56"W

NAN A. SMARTT  
W.I. LOFLAND  
JULIANA BOND  
VOLUME 70, PAGE 183  
D.R.R.C.T

FUT. 20' REC.  
CURB INLET

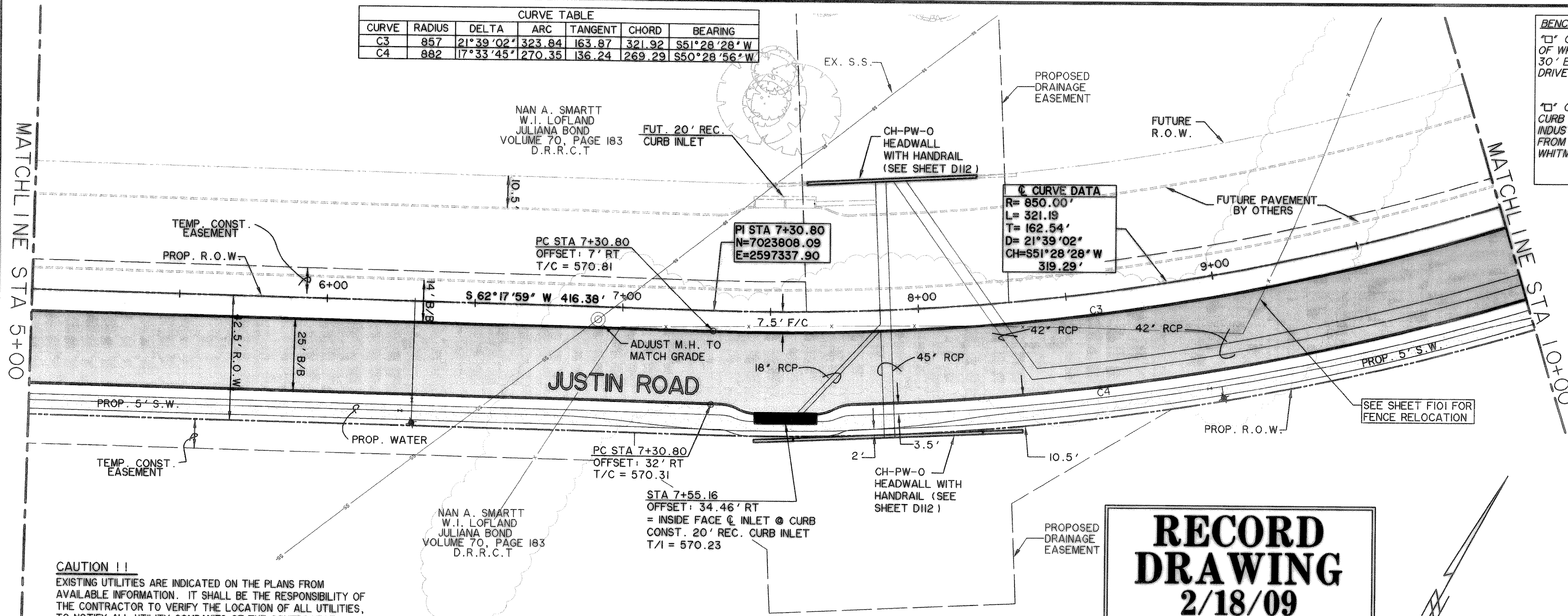
CH-PW-0  
HEADWALL  
WITH HANDRAIL  
(SEE SHEET D112)

**C CURVE DATA**  
R= 850.00'  
L= 321.19'  
T= 162.54'  
D= 21°39'02"  
CH=S51°28'28" W  
319.29'

**BENCHMARKS:**  
"1" CUT IN THE END OF THE SOUTH CURB OF WHITMORE DRIVE LOCATED APPROX 30' EAST OF INTERSECTION OF WHITMORE DRIVE AND TOWNSEND DRIVE.  
ELEVATION 565.24  
"2" CUT IN THE NORTHWEST CORNER OF CURB INLET IN THE WEST CURB LINE OF INDUSTRIAL BLVD APPROX 85' NORTH FROM THE INTERSECTION OF PROPOSED WHITMORE DRIVE AND INDUSTRIAL BLVD.  
ELEVATION 561.28

MATCHLINE STA 5+00

MATCHLINE STA 10+00

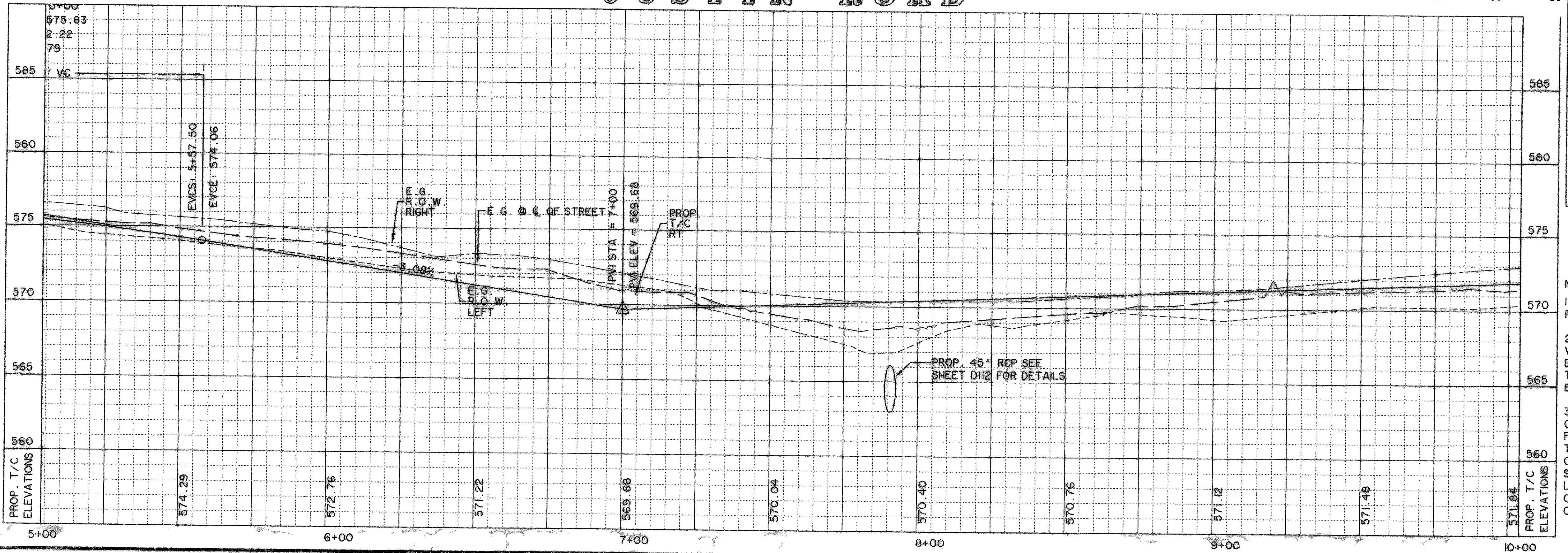
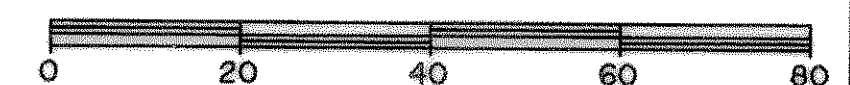


**RECORD  
DRAWING  
2/18/09**

**CAUTION !!**  
EXISTING UTILITIES ARE INDICATED ON THE PLANS FROM AVAILABLE INFORMATION. IT SHALL BE THE RESPONSIBILITY OF THE CONTRACTOR TO VERIFY THE LOCATION OF ALL UTILITIES, TO NOTIFY ALL UTILITY COMPANIES OF THE CONTRACTORS OPERATIONS, TO PROTECT ALL UTILITIES FROM DAMAGE, TO REPAIR ALL UTILITIES DAMAGED DUE TO THE CONTRACTORS OPERATIONS, AND TO NOTIFY THE ENGINEER PROMPTLY OF ALL CONFLICTS OF THE WORK WITH EXISTING UTILITIES.

NAN A. SMARTT  
W.I. LOFLAND  
JULIANA BOND  
VOLUME 70, PAGE 183  
D.R.R.C.T

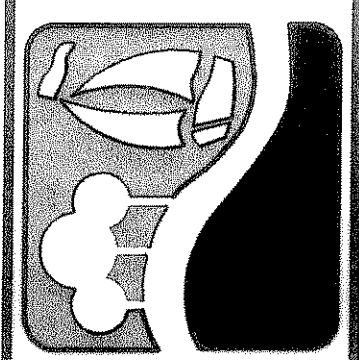
**JUSTIN ROAD**



- LEGEND**
- 4200 PSI CONCRETE PAVEMENT
  - PROPOSED SIDEWALK
  - LANDSCAPING
  - EXISTING CURB
  - FUTURE CURB
  - PROPOSED CURB
  - TEMPORARY ASPHALT CURB
  - EXISTING TREE
  - EXISTING TREE-LINE
  - W- EXISTING WATER LINE
  - SS- EXISTING SANITARY SEWER LINE
  - R.O.W. LINE
  - FIRE HYDRANT
  - STORM DRAIN INLET
  - WATER VALVES
  - DIRECTION OF FLOW
  - EXISTING SIGN
  - OE- EXISTING OVERHEAD ELECTRIC
  - G- EXISTING UNDERGROUND GAS
  - EXISTING WATER VALVE
  - UT- EXISTING UNDERGROUND TELEPHONE
  - BARRIER FREE RAMP TO BE CONST. W/PROJECT
  - \* NOTE: MIN 6.5 SACK

- NOTES:**
- 1) REFER TO SHEET P001 FOR PAVING STRIPING/BUTTON DETAILS.
  - 2) CONTRACTOR SHALL FIELD VERIFY LOCATIONS OF EXISTING DRAINAGE INFRASTRUCTURE PRIOR TO CONSTRUCTION AND NOTIFY ENGINEER OF ANY DISCREPANCIES.
  - 3) CONTRACTOR SHALL COORDINATE RELOCATIONS WITH FRANCHISE UTILITIES AT LEAST THREE WEEKS PRIOR TO CONSTRUCTION. CONTRACTOR SHALL FIELD VERIFY UTILITY LOCATIONS AND ELEVATIONS AT CROSSINGS PRIOR TO CONSTRUCTION.

PREPARED BY:  
**WIA WIER & ASSOCIATES, INC.**  
ENGINEERS SURVEYORS LAND PLANNERS  
701 HIGHLANDER BLVD., SUITE 300 ARLINGTON, TEXAS 76010 METRO (817)467-7700  
6849 ELM STREET FRISCO, TEXAS 75034 METRO (214)387-8000  
www.wierassociates.com



**CITY OF  
ROCKWALL  
JUSTIN ROAD  
EXTENSION**

**PAVING PLAN  
AND PROFILE  
STA 5+00 TO STA 10+00**

STATE OF TEXAS  
RONALD RAMIREZ  
81821  
REGISTERED PROFESSIONAL ENGINEER  
Ronald Ramirez  
COPYRIGHT ©  
WIER & ASSOCIATES, INC.  
LAST SHEET EDIT  
DATE 02-17-09  
WAH 04124.01  
**SHEET NO.  
P102**