

CURVE TABLE						
CURVE	RADIUS	DELTA	ARC	TANGENT	CHORD	BEARING
C1	843	16°06'59"	237.12	119.35	236.34	S54°14'29" W
C2	818	16°06'59"	230.09	115.81	236.34	S54°14'29" W

C CURVE DATA
 R= 850.00'
 L= 239.09'
 T= 120.34'
 D= 16°06'59"
 CH=554°14'29" W
 234.30'

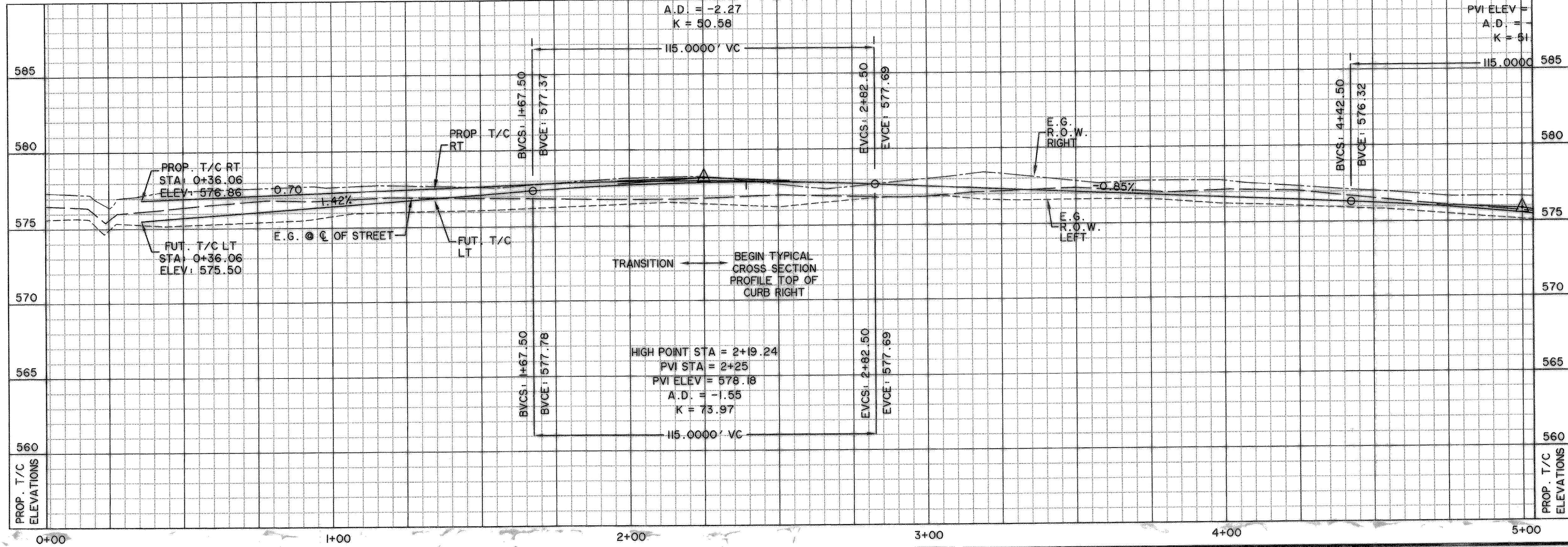
BENCHMARKS:
 "1" CUT IN THE END OF THE SOUTH CURB OF WHITMORE DRIVE LOCATED APPROX 30' EAST OF INTERSECTION OF WHITMORE DRIVE AND TOWNSEND DRIVE.
 ELEVATION 565.24
 "1" CUT IN THE NORTHWEST CORNER OF CURB INLET IN THE WEST CURB LINE OF INDUSTRIAL BLVD APPROX 85' NORTH FROM THE INTERSECTION OF PROPOSED WHITMORE DRIVE AND INDUSTRIAL BLVD.
 ELEVATION 561.28

RECORD DRAWING
 2/18/09

CAUTION !!
 EXISTING UTILITIES ARE INDICATED ON THE PLANS FROM AVAILABLE INFORMATION. IT SHALL BE THE RESPONSIBILITY OF THE CONTRACTOR TO VERIFY THE LOCATION OF ALL UTILITIES, TO NOTIFY ALL UTILITY COMPANIES OF THE CONTRACTORS OPERATIONS, TO PROTECT ALL UTILITIES FROM DAMAGE, TO REPAIR ALL UTILITIES DAMAGED DUE TO THE CONTRACTORS OPERATIONS, AND TO NOTIFY THE ENGINEER PROMPTLY OF ALL CONFLICTS OF THE WORK WITH EXISTING UTILITIES.

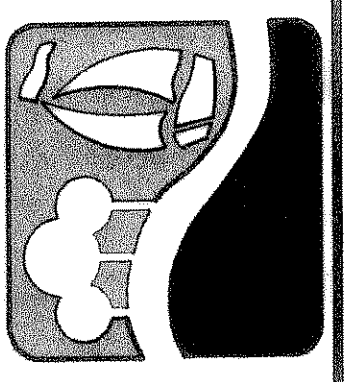
- LEGEND**
- 4200 PSI CONC. PAVING*
 - PROPOSED SIDEWALK
 - LANDSCAPING
 - EXISTING CURB
 - FUTURE CURB
 - PROPOSED CURB
 - TEMPORARY ASPHALT CURB
 - EXISTING TREE
 - EXISTING TREE-LINE
- * NOTE: MIN 6.5 SACK

JUSTIN ROAD



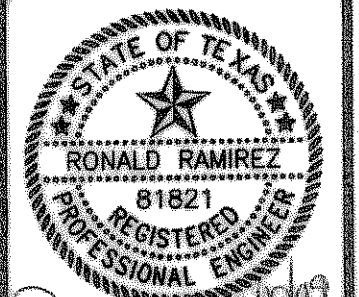
- NOTES:**
- 1) REFER TO SHEET POOL FOR PAVING STRIPING/BUTTON DETAILS.
 - 2) CONTRACTOR SHALL FIELD VERIFY LOCATIONS OF EXISTING DRAINAGE INFRASTRUCTURE PRIOR TO CONSTRUCTION AND NOTIFY ENGINEER OF ANY DISCREPANCIES.
 - 3) CONTRACTOR SHALL COORDINATE RELOCATIONS WITH FRANCHISE UTILITIES AT LEAST THREE WEEKS PRIOR TO CONSTRUCTION. CONTRACTOR SHALL FIELD VERIFY UTILITY LOCATIONS AND ELEVATIONS AT CROSSINGS PRIOR TO CONSTRUCTION.
 - 4) 0.10' CONTOURS SHOWN FOR REFERENCE THIS SHEET ONLY

PREPARED BY:
WIA WIER & ASSOCIATES, INC.
 ENGINEERS SURVEYORS & ASSOCIATES LAND PLANNERS
 701 HIGHLANDER BLVD., SUITE 300 ARLINGTON, TEXAS 76015 METRO (817)746-7700
 6848 ELI STREET IRVING, TEXAS 75034 METRO (214)387-0000
 www.wierassociates.com



CITY OF ROCKWALL JUSTIN ROAD EXTENSION

PAVING PLAN AND PROFILE
 STA 0+04.13 TO STA 5+00



Copyright ©
 WIER & ASSOCIATES, INC.
 LAST SHEET EDIT
 DATE 02-17-2009
 WA# 04124.01
SHEET NO. P101

TIME: 12:02 FILE: PAVE-1-04124_01.dwg