

TABLE OF VARIABLE DIMENSIONS AND QUANTITIES FOR ONE HEADWALL ④

SLOPE	DIA OF PIPE, D	Values for one Pipe		Values to be added for each add'l Pipe			
		W	Reinf (Lbs)	Conc (CY)	W	Reinf (Lbs)	Conc (CY)
2:1	12"	9'-0"	122	1.1	1'-9"	15	0.2
	15"	10'-3"	136	1.3	2'-2"	16	0.2
	18"	11'-6"	163	1.5	2'-8"	19	0.3
	21"	12'-9"	200	1.8	3'-1"	31	0.4
	24"	14'-0"	217	2.1	3'-7"	34	0.4
	27"	15'-3"	254	2.4	3'-11"	37	0.5
	30"	16'-6"	272	2.7	4'-4"	40	0.6
	33"	17'-9"	314	3.1	4'-8"	43	0.6
	36"	19'-0"	371	3.9	5'-1"	46	0.8
	42"	21'-6"	442	4.9	5'-10"	52	1.0
	48"	25'-0"	569	6.4	6'-7"	59	1.3
	54"	27'-6"	701	7.5	7'-6"	82	1.6
3:1	60"	30'-0"	794	8.8	8'-3"	90	1.8
	66"	32'-6"	894	10.2	8'-9"	96	2.0
	72"	35'-0"	1055	11.7	9'-4"	103	2.3
	12"	13'-0"	175	1.6	1'-9"	14	0.2
	15"	14'-9"	193	1.9	2'-2"	17	0.2
	18"	16'-6"	228	2.2	2'-8"	19	0.3
	21"	18'-3"	299	2.6	3'-1"	31	0.4
	24"	20'-0"	323	3.0	3'-7"	33	0.4
	27"	21'-9"	371	3.5	3'-11"	37	0.5
	30"	23'-6"	415	4.0	4'-4"	40	0.5
	33"	25'-3"	469	4.6	4'-8"	43	0.6
	36"	27'-0"	556	5.7	5'-1"	46	0.8
4:1	42"	30'-6"	675	7.1	5'-10"	52	1.0
	48"	35'-6"	837	9.2	6'-7"	59	1.3
	54"	39'-0"	1015	11.0	7'-6"	84	1.6
	60"	42'-6"	1171	12.9	8'-3"	91	1.8
	66"	46'-0"	1298	14.9	8'-9"	98	2.0
	72"	49'-6"	1561	17.1	9'-4"	103	2.3
	12"	17'-0"	229	2.0	1'-9"	15	0.2
	15"	19'-3"	266	2.4	2'-2"	17	0.2
	18"	21'-6"	308	2.9	2'-8"	19	0.3
	21"	23'-9"	382	3.5	3'-1"	31	0.3
	24"	26'-0"	430	3.9	3'-7"	34	0.4
	27"	28'-3"	486	4.7	3'-11"	37	0.5
6:1	30"	30'-6"	539	5.2	4'-4"	40	0.6
	33"	32'-9"	603	6.0	4'-8"	42	0.6
	36"	35'-0"	738	7.5	5'-1"	47	0.8
	42"	39'-6"	881	9.3	5'-10"	52	1.0
	48"	46'-0"	1102	12.1	6'-7"	61	1.3
	54"	50'-6"	1364	14.4	7'-6"	84	1.6
	60"	55'-0"	1547	16.9	8'-3"	91	1.8
	66"	59'-6"	1741	19.5	8'-9"	98	2.0
	72"	64'-0"	2069	22.4	9'-4"	102	2.3
	12"	25'-0"	336	3.0	1'-9"	14	0.2
	15"	28'-3"	384	3.6	2'-2"	17	0.2
	18"	31'-6"	452	4.2	2'-8"	19	0.3
21"	34'-9"	581	5.1	3'-1"	31	0.4	
24"	38'-0"	644	5.8	3'-7"	34	0.4	
27"	41'-3"	737	6.9	3'-11"	37	0.5	
30"	44'-6"	807	7.7	4'-4"	39	0.6	
33"	47'-9"	912	8.9	4'-8"	44	0.6	
36"	51'-0"	1108	11.0	5'-1"	48	0.8	
42"	57'-6"	1318	13.7	5'-10"	54	1.0	
48"	67'-0"	1674	17.9	6'-7"	59	1.3	
54"	73'-6"	2064	21.3	7'-6"	83	1.6	
60"	80'-0"	2343	24.9	8'-3"	89	1.8	
66"	86'-6"	2635	28.9	8'-9"	96	2.0	
72"	93'-0"	3123	33.1	9'-4"	101	2.3	

DISCLAIMER: The use of this standard is governed by the "Texas Engineering Practice Act". No warranty of any kind is made by TxDOT for any public use of this standard. TxDOT assumes no responsibility for the conversion of this standard to other formats or for incorrect results or damages resulting from its use.

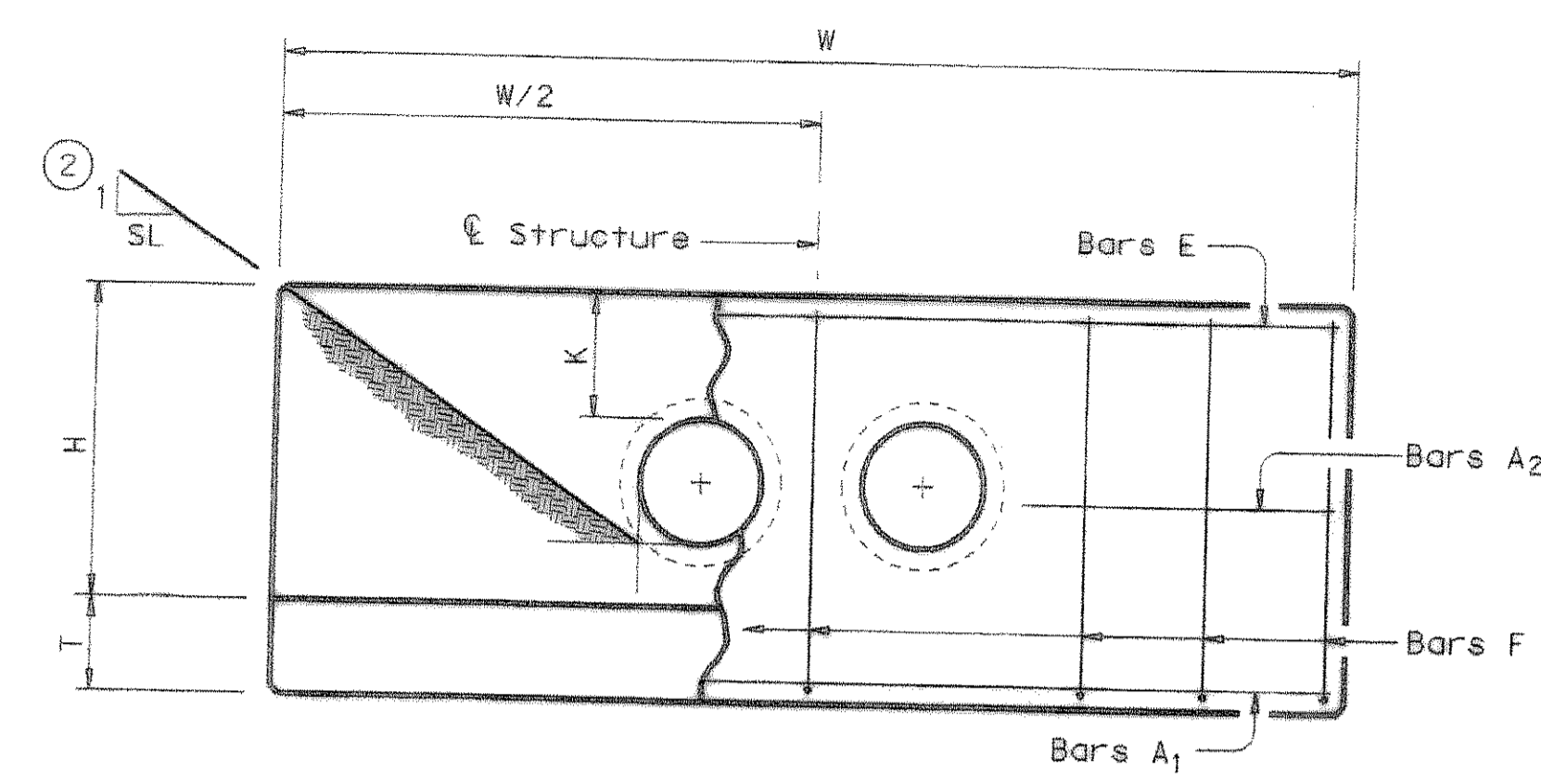
ACCI: _____
LEVELS DISPLAYED: _____

TABLE OF CONSTANT DIMENSIONS

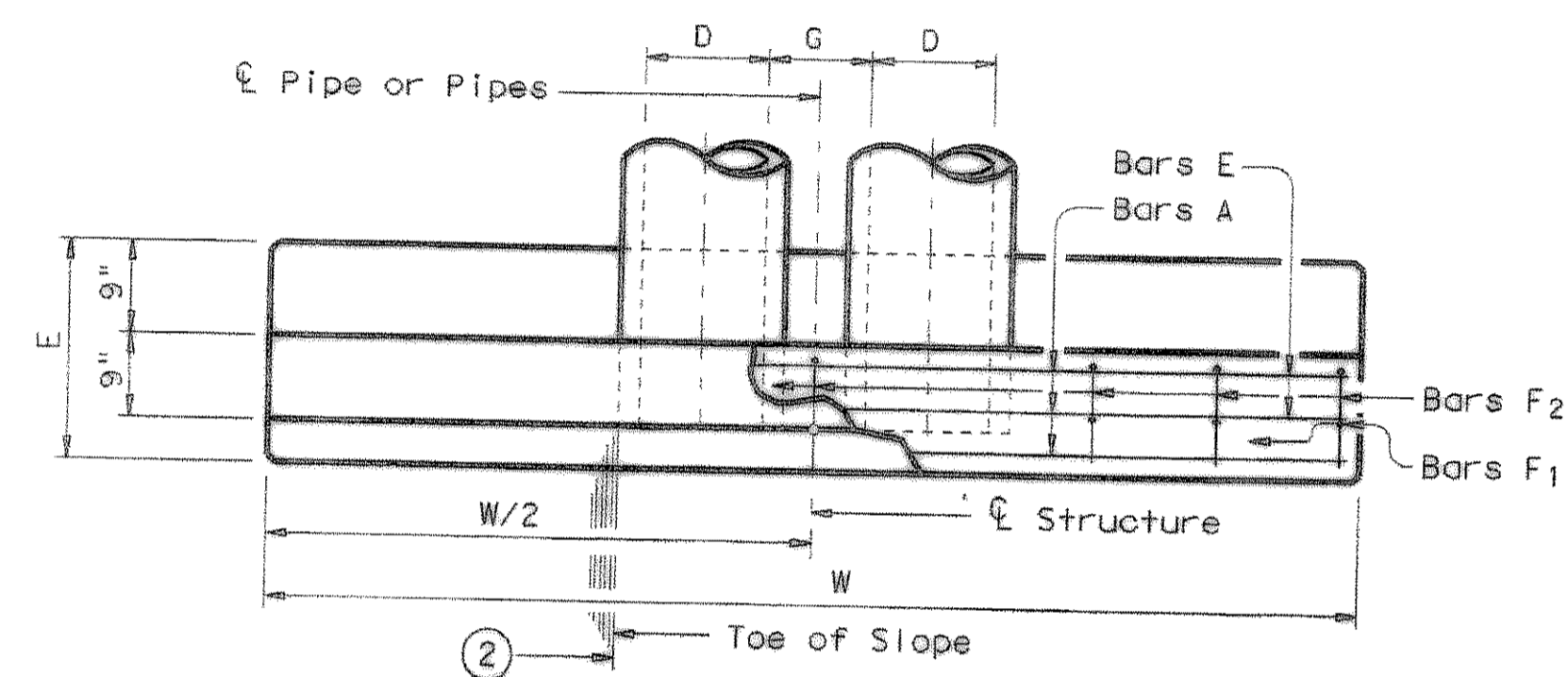
DIA OF PIPE, D	G	K	H	T	E
12"	9"	1'-0"	2'-8"	9"	1'-9"
15"	11"	1'-0"	2'-11"	9"	1'-9"
18"	1'-2"	1'-0"	3'-2"	9"	1'-9"
21"	1'-4"	1'-0"	3'-5"	9"	2'-0"
24"	1'-7"	1'-0"	3'-8"	9"	2'-0"
27"	1'-8"	1'-0"	3'-11"	9"	2'-3"
30"	1'-10"	1'-0"	4'-2"	9"	2'-3"
33"	1'-11"	1'-0"	4'-5"	9"	2'-6"
36"	2'-1"	1'-0"	4'-8"	1'-0"	2'-6"
42"	2'-4"	1'-0"	5'-2"	1'-0"	2'-9"
48"	2'-7"	1'-3"	5'-11"	1'-0"	3'-0"
54"	3'-0"	1'-3"	6'-5"	1'-0"	3'-3"
60"	3'-3"	1'-3"	6'-11"	1'-0"	3'-6"
66"	3'-3"	1'-3"	7'-5"	1'-0"	3'-9"
72"	3'-4"	1'-3"	7'-11"	1'-0"	4'-0"

TABLE OF REINFORCING STEEL ④

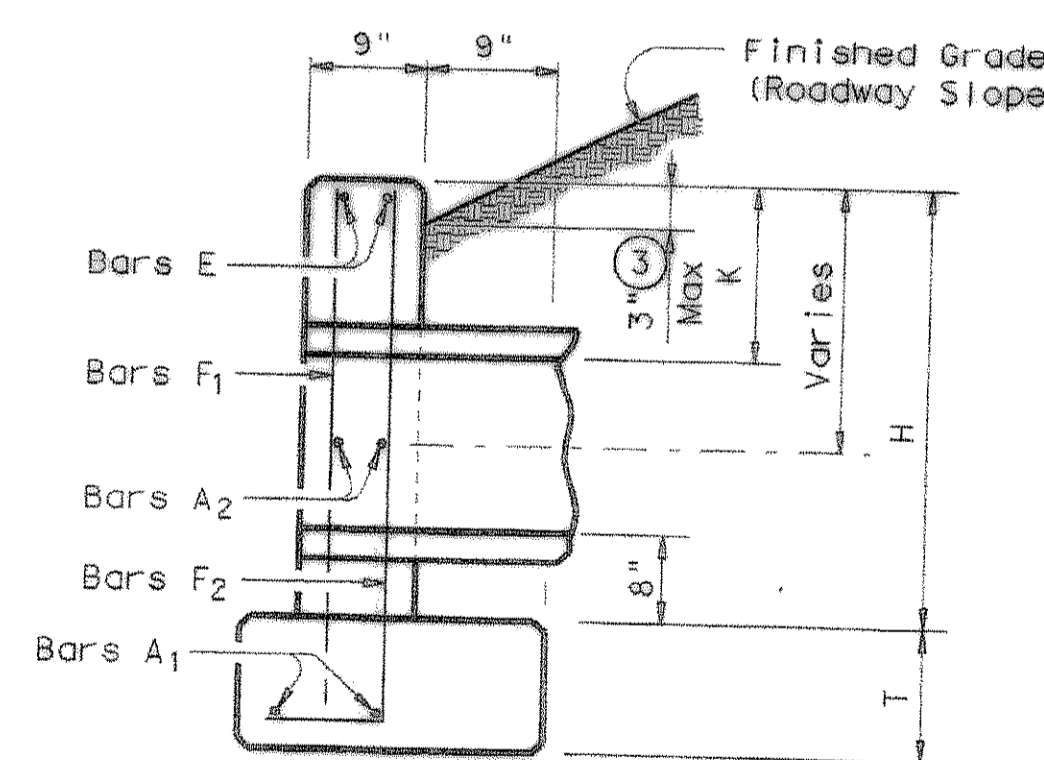
Bar	Size	Spa	No.
A1	# 5	~	2
A2	# 5	1'-6"	~
E	# 5	~	2
F	# 5	1'-0"	~



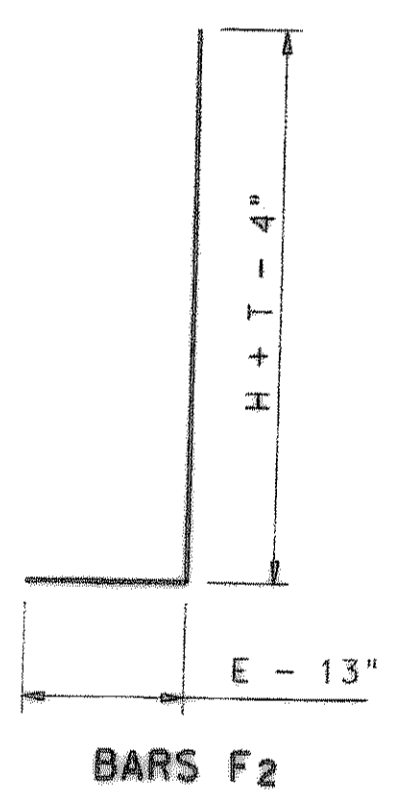
ELEVATION



PLAN OF NON-SKEWED PIPES



SECTION



GENERAL NOTES:
 Designed according to current AASHTO Standard and Interim Specifications.
 Reinforcing steel shall be placed with the center of the outside layer of bars 2" from the surface of the concrete.
 All reinforcing steel shall be Grade 60.
 All concrete shall be Class "C" and shall have a minimum compressive strength of 3600 psi.
 No bridge rails of any type may be mounted directly to these culvert headwalls.

RECORD DRAWING
2/18/09

- Quantities shown are for concrete pipe and will increase slightly for metal pipe installations.
- Indicated slope is perpendicular to centerline Pipe or Pipes.
- For vehicle safety, curbs shall project no more than 3" above finished grade. Curb heights shall be reduced, if necessary, to meet these requirements. No changes will be made in quantities and no additional compensation will be allowed for this work.
- Quantities shown are for one structure end only (one headwall).

Texas Department of Transportation
 Bridge Division

CONCRETE HEADWALLS WITH PARALLEL WINGS FOR NON-SKEWED PIPE CULVERTS

CH-PW-0

FILE: chpw0ste.dgn DN: TxDOT CR: TxDOT DR: TxDOT CR: GAF
 © TxDOT May 2005 DISTRICT: FEDERAL AID PROJECT: SHEET: 0208
 REVISIONS: COUNTY: CONTROL: SECT: JOB: HIGHWAY: