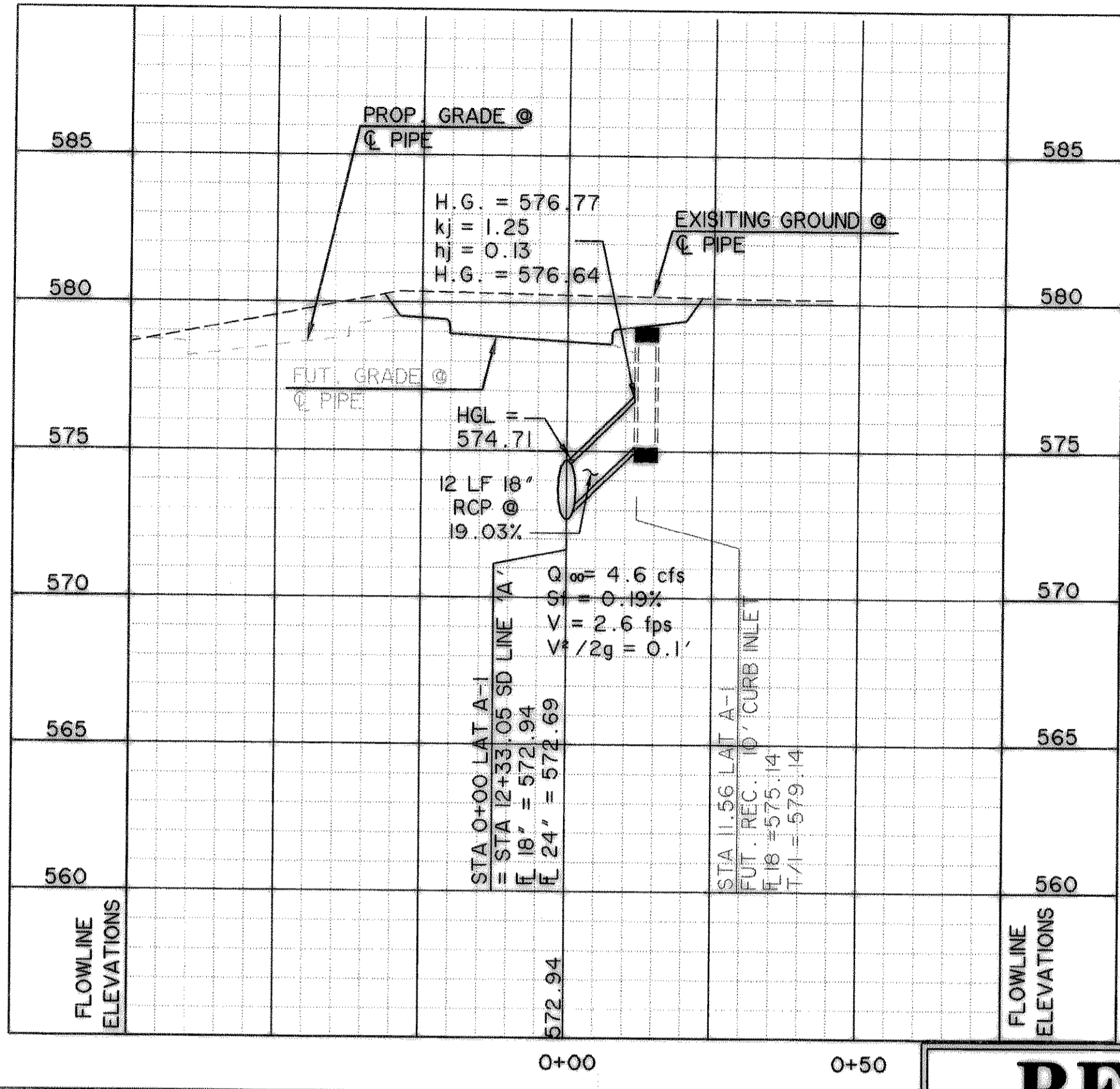
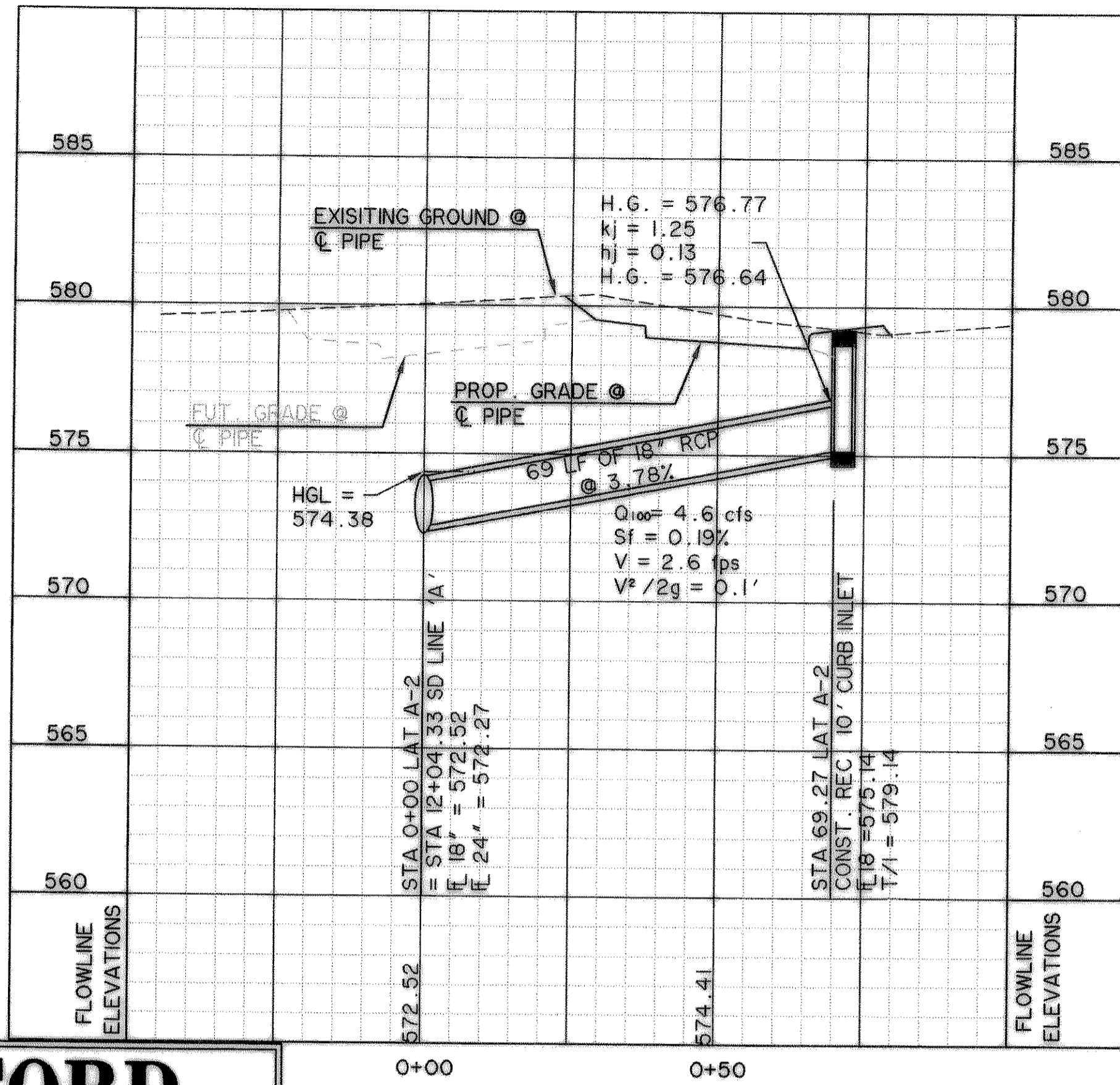


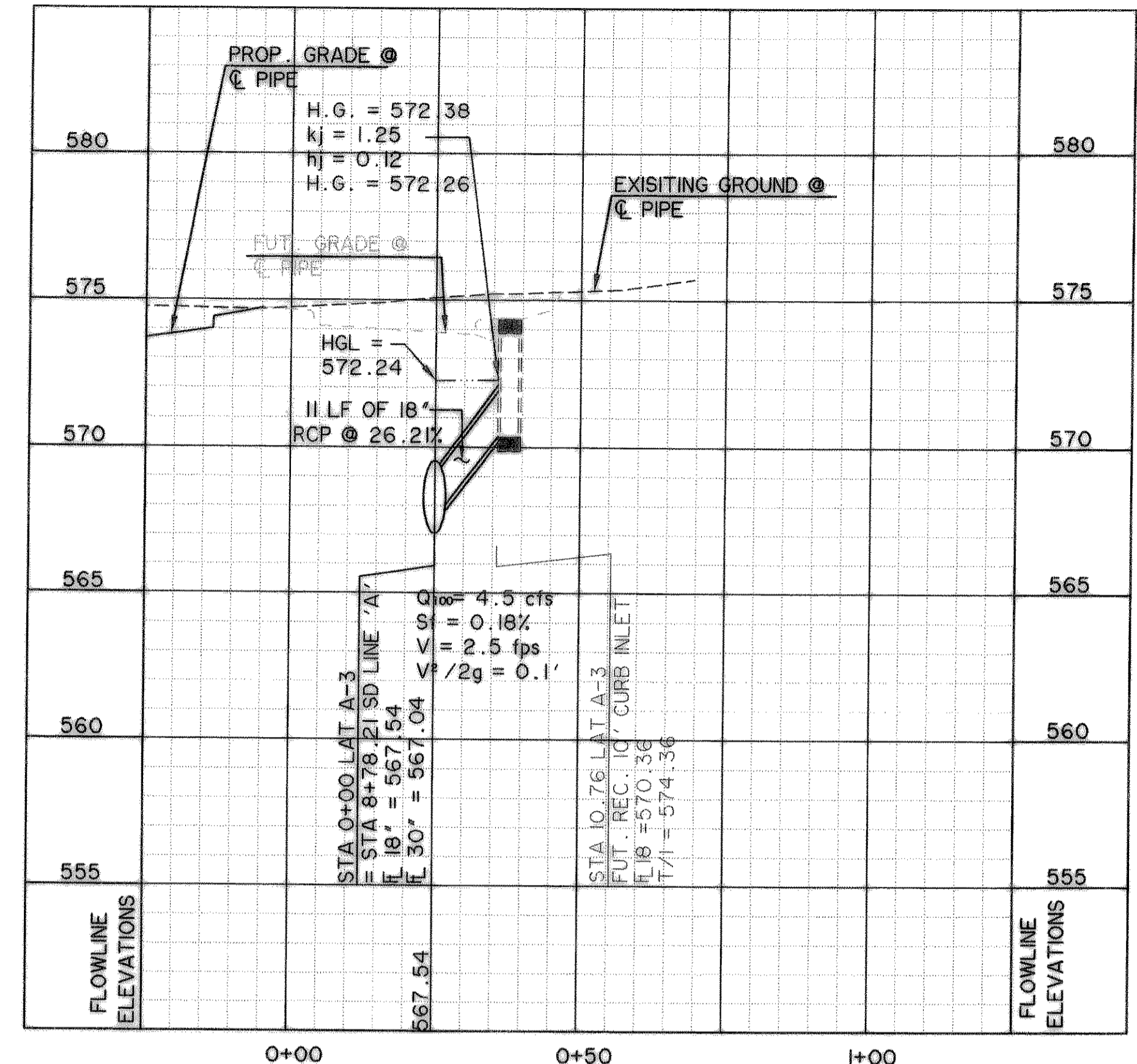
**LATERAL "A-1"**



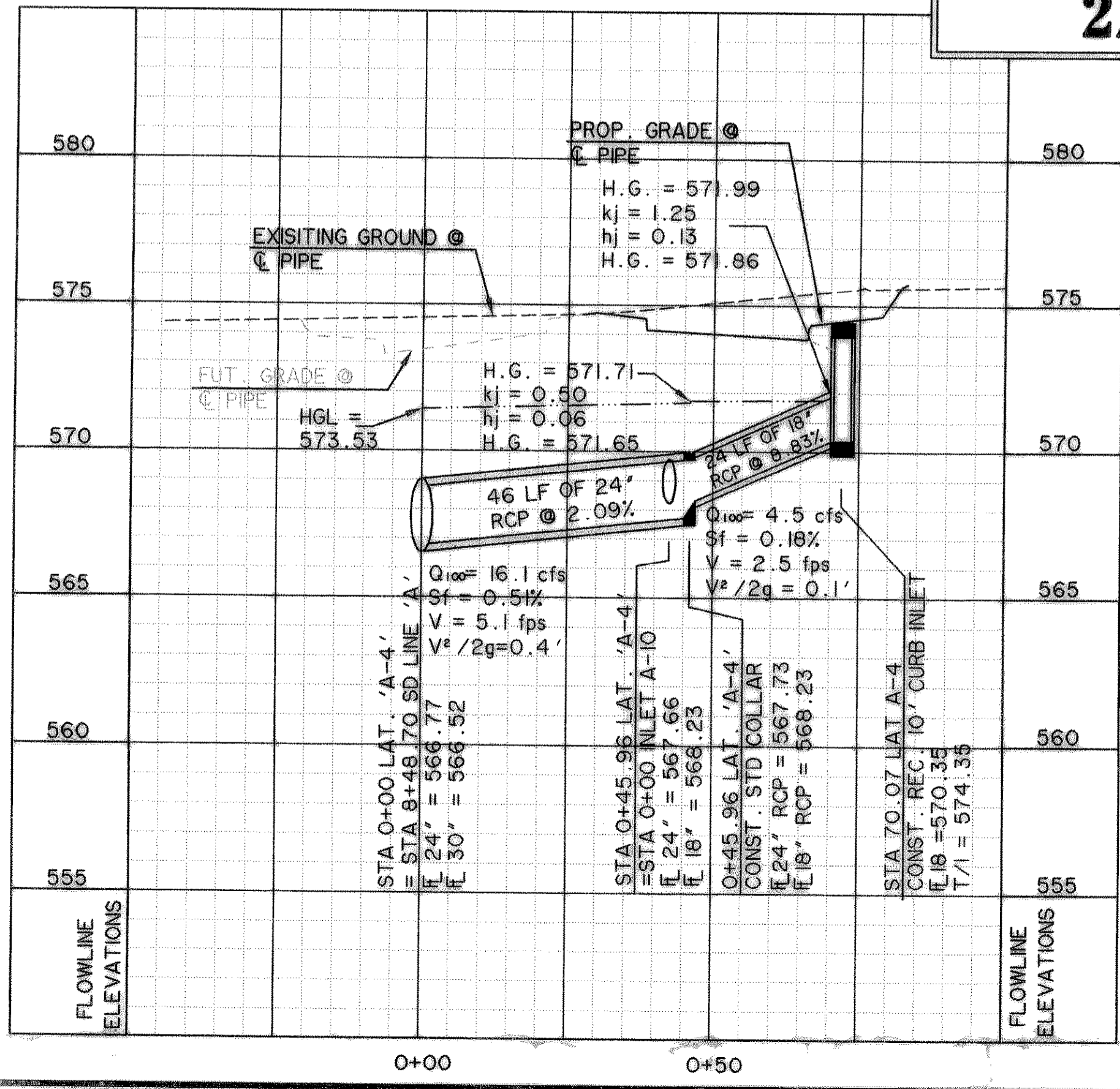
**LATERAL "A-2"**



**LATERAL "A-3"**

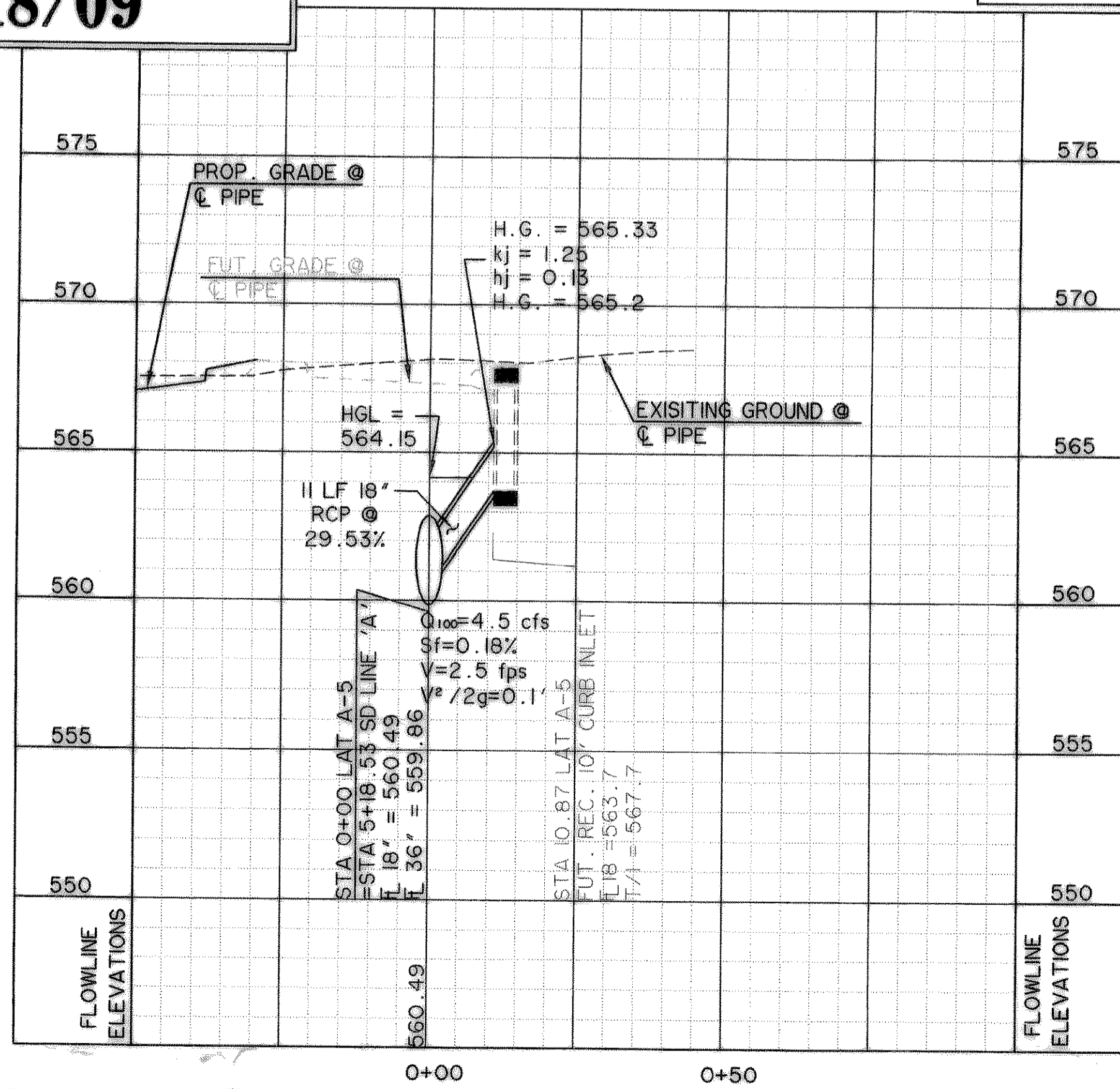


**LATERAL "A-4"**



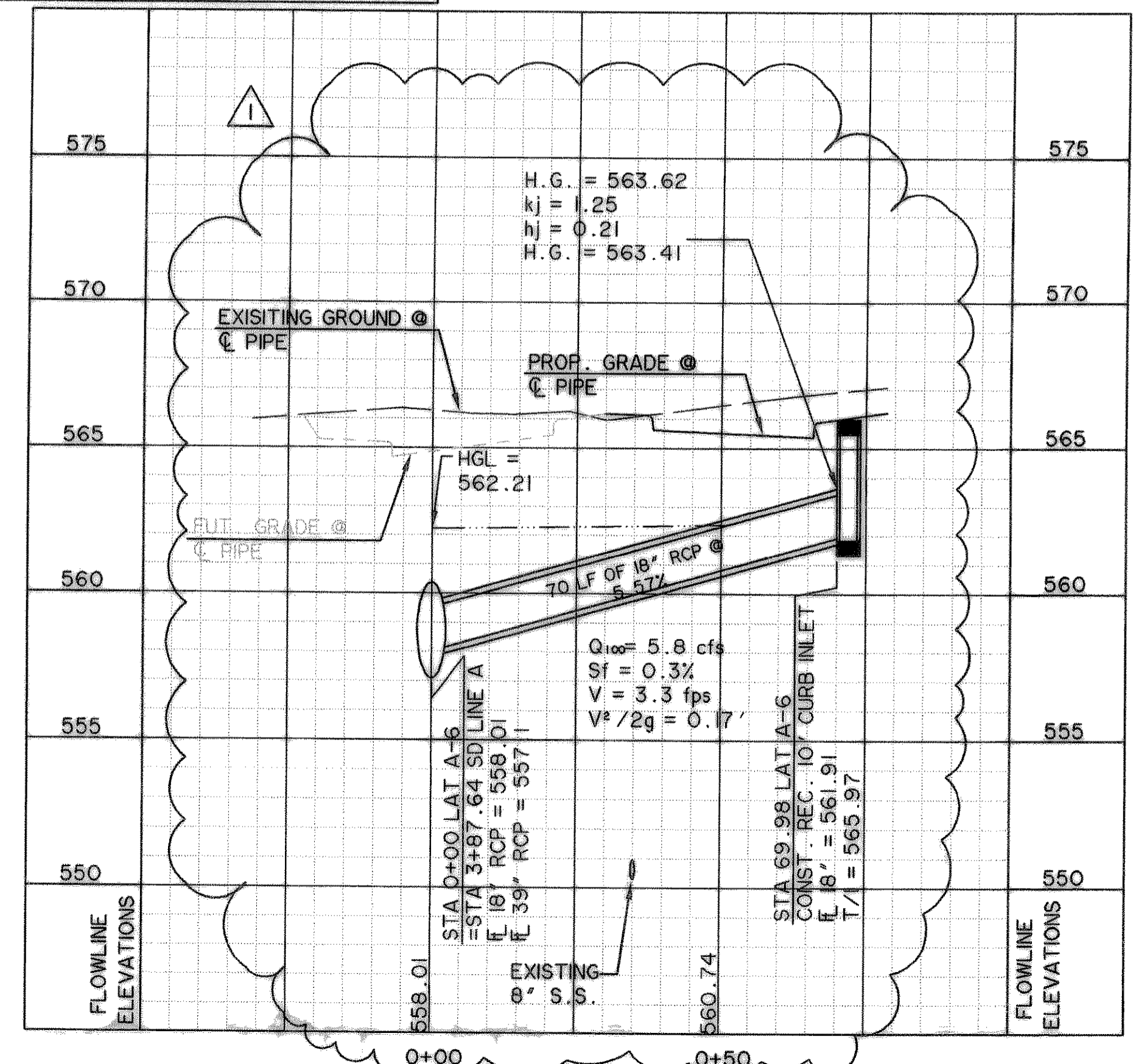
**RECORD  
DRAWING  
2/18/09**

**LATERAL "A-5"**



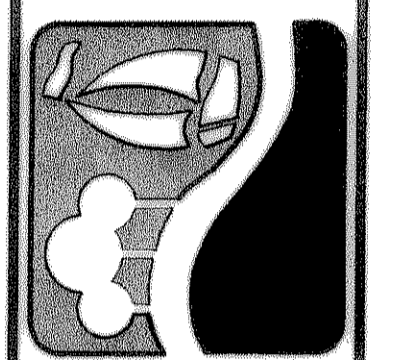
RELOCATE SD LAT 'A-6' TO STA 3+87.64 SD LINE 'A'. SEE SHEETS D102 AND D103. UPDATED HYDRAULIC INFO REvised 12/27/2006

**LATERAL "A-6"**



TIME: 10:12 FILE: SD LATS-1-04124\_01\_REV-01.dwg

PREPARED BY:  
**VIA WIER & ASSOCIATES, INC.**  
ENGINEERS SURVEYORS LAND PLANNERS  
701 HIGHLANDER BLVD., SUITE 300 ARLINGTON, TEXAS 76015 METRO (817)467-7700  
6849 ELM STREET FRISCO, TEXAS 75004 METRO (214)387-6000  
www.wierassociates.com



**CITY OF  
ROCKWALL  
JUSTIN ROAD  
EXTENSION**

**STORMDRAIN  
LATERALS  
A-1 THRU A-6**

STATE OF TEXAS  
RONALD RAMIREZ  
81821  
REGISTERED PROFESSIONAL ENGINEER  
Ronald Ramirez  
COPYRIGHT ©  
WIER & ASSOCIATES, INC.  
LAST SHEET EDIT  
DATE 02-18-2009  
SHA# 04124\_01  
**SHEET NO.  
D108**