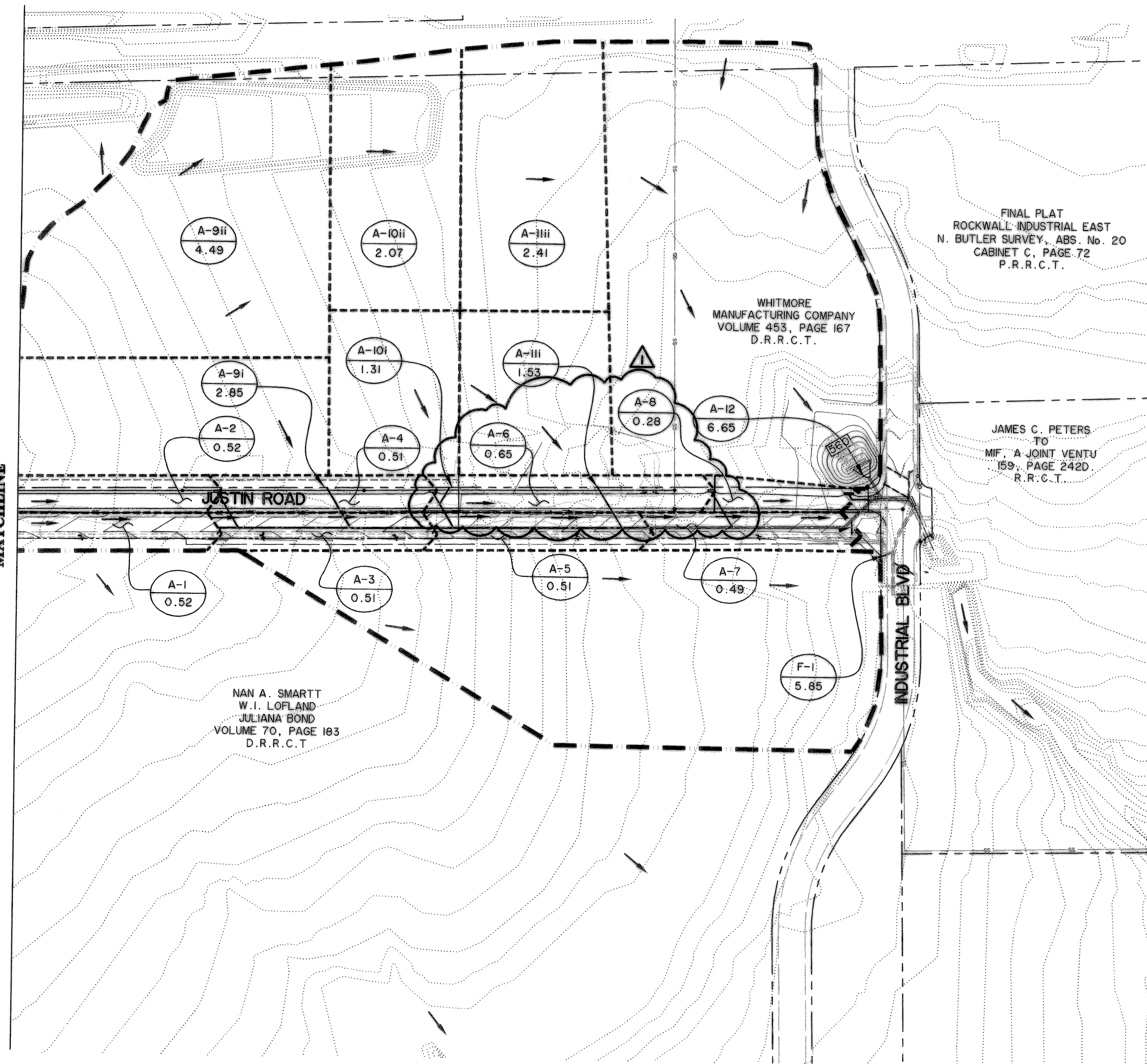


FILE: DAMAP2-04124\_01\_REV-01.dwg

MATCHLINE



FINAL PLAT  
ROCKWALL INDUSTRIAL EAST  
N. BUTLER SURVEY, ABS. No. 20  
CABINET C, PAGE 72  
P.R.R.C.T.

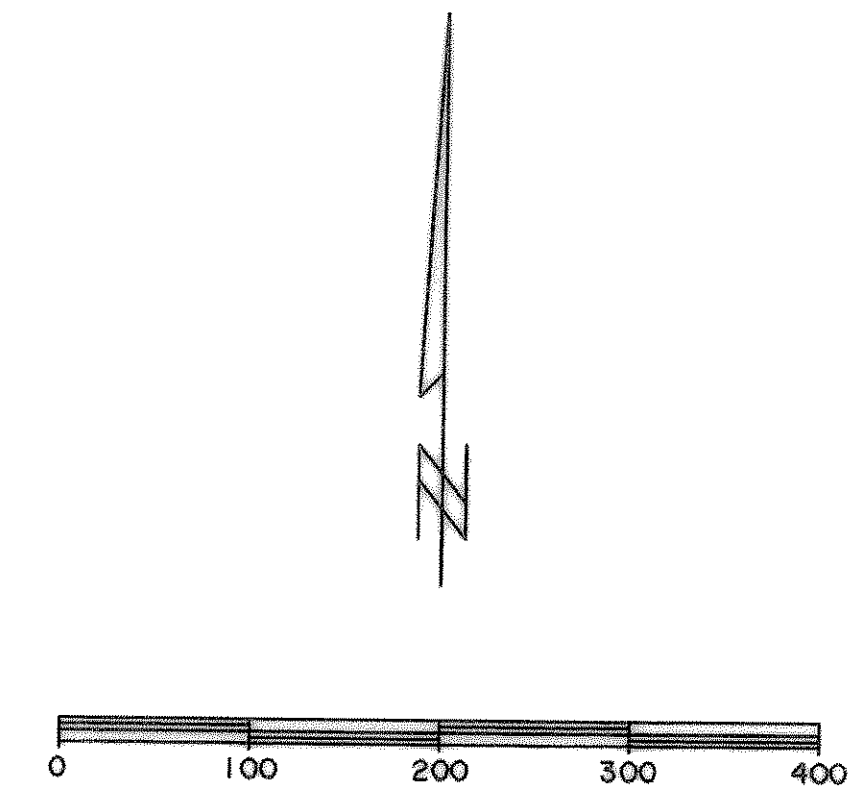
WHITMORE  
MANUFACTURING COMPANY  
VOLUME 453, PAGE 167  
D.R.R.C.T.

JAMES C. PETERS  
TO  
MIF, A JOINT VENTU  
159, PAGE 242D  
R.R.C.T.

NAN A. SMARTT  
W.I. LOFLAND  
JULIANA BOND  
VOLUME 70, PAGE 163  
D.R.R.C.T.

**LEGEND**

- A-I  
XX.X DRAINAGE AREA DESIGNATION
- XX.X DRAINAGE AREA IN ACRES
- DRAINAGE AREA BOUNDARY
- MAJOR DRAINAGE AREA DIVIDE
- DRAINAGE AREA SUB DIVIDE
- DIRECTION OF FLOW



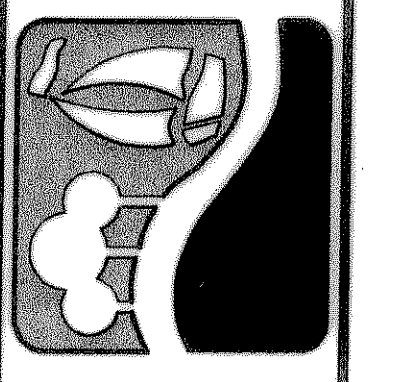
NOTES:

- 1) PRESENT AND FUTURE FLOWS FROM DRAINAGE AREAS A-9ii, A-10ii, A-11ii, AND A-12 ENTER STORM DRAIN SYSTEM 'A' THROUGH HEADWALL AND CULVERT A-12. CULVERT AT A-12 AND STORM DRAIN LINE 'A' WERE SIZED FOR FULLY DEVELOPED CONDITIONS.  
THEREFORE,  $Q = \text{SUM}(A-9ii, A-10ii, A-11ii, A-12) = 137.77 \text{ CFS}$
- 2) USING A C FACTOR OF 0.9 FOR THE RUNOFF CALCULATIONS, ALL INLET DESIGNS ACCOMMODATE THE STREET SECTIONS, PARKWAYS, AND ROWS FOR THEIR RESPECTIVE DRAINAGE AREAS.
- 3) DRAINAGE AREAS (A-1, A-3, A-5, A-7, B-5, AND B-7) ARE REPRESENTATIVE OF FUTURE CONSTRUCTION. FOR TEMPORARY CONDITIONS GRADE TO DRAIN.

⚠ RELOCATE SD LAT 'A-6' TO  
STA 3+87.64 SD LINE 'A'  
SEE SHEETS D102 AND D103  
ISED 12/27/2006

**RECORD  
DRAWING  
2/18/09**

PREPARED BY:  
**WIA WIER & ASSOCIATES, INC.**  
 ENGINEERS SURVEYORS LAND PLANNERS  
 6849 ELM STREET FRSICO, TEXAS 75034 METRO (214)387-8000  
 701 HIGHLANDER BLVD., SUITE 300 ARLINGTON, TEXAS 76015 METRO (817)467-7700  
 www.wierassociates.com



**CITY OF  
ROCKWALL  
JUSTIN ROAD  
EXTENSION**

**DRAINAGE  
AREA  
MAP**

RONALD RAMIREZ  
 REGISTERED PROFESSIONAL ENGINEER  
 2/18/09  
 COPYRIGHT ©  
 WIER & ASSOCIATES, INC.  
 LAST SHEET EDIT  
 DATE 02-18-2009  
 WA# 04124.01  
**SHEET NO.  
DOO2**