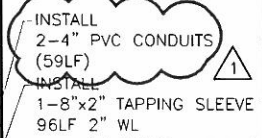
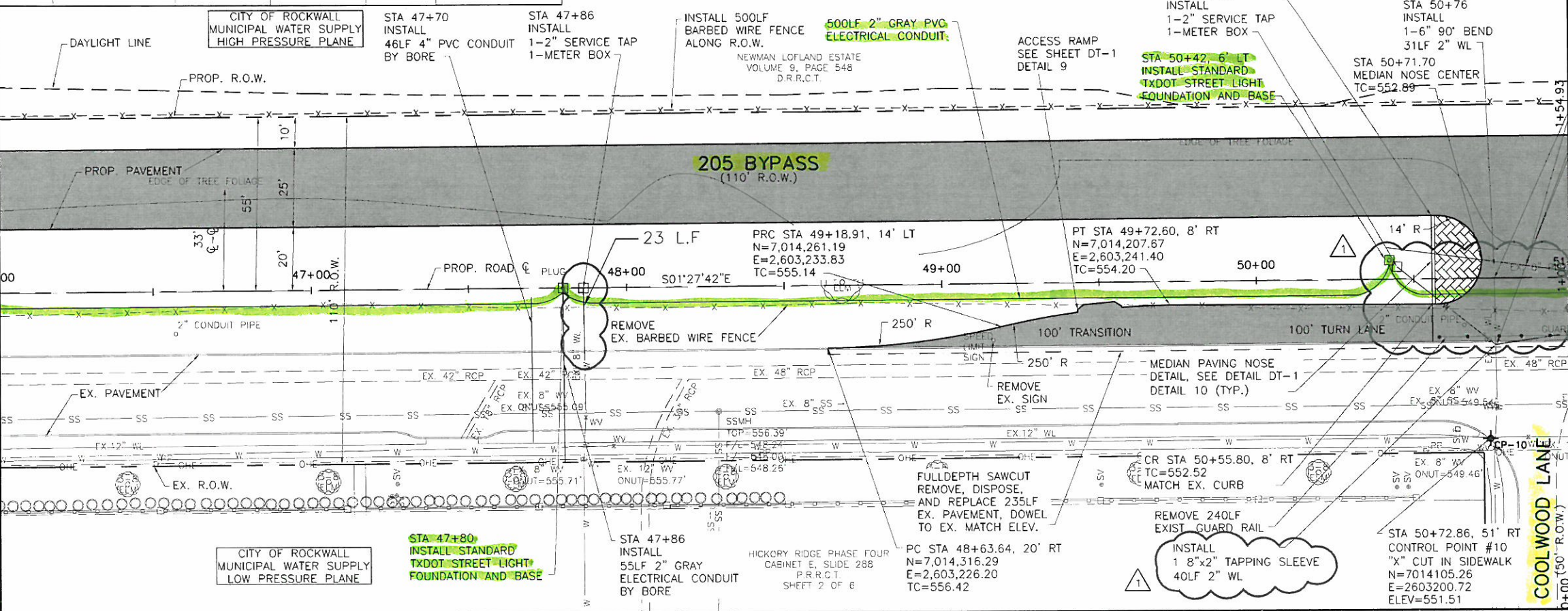




ACAD 2d1 7.1s (LMS Trct) User: IS  
 C:\Users\IS\Documents\Projects\2005 BYPASS\2005 BYPASS.dwg - LAYOUT - Layout1  
 10/11/09 3:00:00 PM  
 7 REFERENCE FILES: \BASE\C.V.-ALL-PL-SHAD \BASE\C.V.-ALL-PL-SITE \BASE\C.V.-ALL-PL-TOPO \BASE\C.V.-ALL-PL-ROAD \SEALS\B.5282 \SEA\S.9.1882 004 \STANDARD\340ORDER

ITEM	STATION AND OFFSET	NORTHING	EASTING	ELEVATION	DESCRIPTION
CP-10	50+73.88, 51' RT	7,014,105.33	2,603,200.72	551.51	"X" CUT IN SIDEWALK

MATCHLINE STA 46+00  
SEE SHEET PV-9



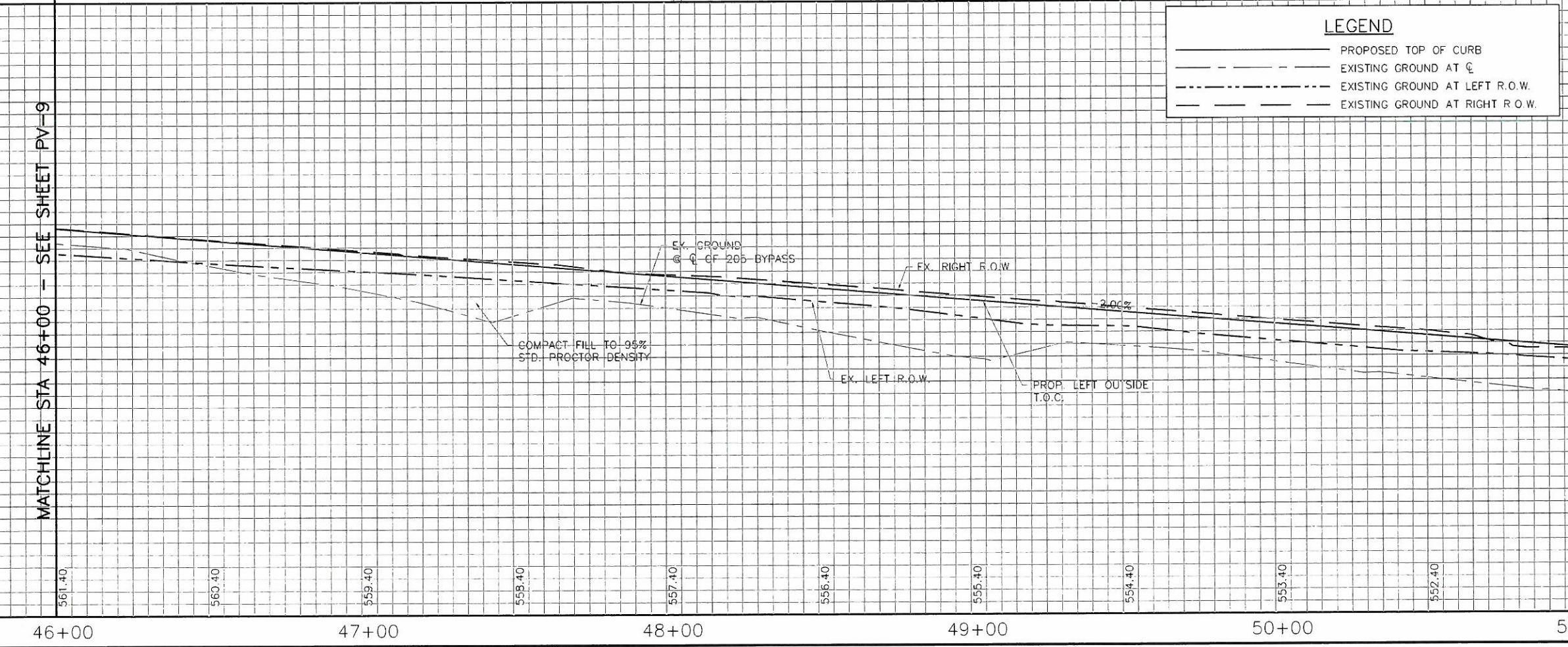
INSTALL 2-4\" PVC CONDUITS (59LF)  
 INSTALL 1-8\"x2\" TAPPING SLEEVE 96LF 2\" WL

SCALE:  
 HORIZ: 1\"=20'  
 VERT 1\"=5'

LEGEND	
—	PROPOSED TOP OF CURB
- - -	EXISTING GROUND AT C
- · - · -	EXISTING GROUND AT LEFT R.O.W.
- · - · -	EXISTING GROUND AT RIGHT R.O.W.

MATCHLINE STA 46+00 - SEE SHEET PV-9

MATCHLINE STA 51+00 SEE SHEET PV-11



THIS RECORD DRAWING IS A COMBINATION OF THE PROJECT, MODIFIED BY INFORMATION FURNISHED BY THE CONTRACTOR REFLECTING CHANGES IN THE PROJECT DURING CONSTRUCTION. THE CONTRACTOR SHALL BE RESPONSIBLE FOR THE ACCURACY OF THE RECORD DRAWINGS AND SHALL FILE THEM WITH THE OFFICE OF FREES AND NICHOLS, INC. 4055 INTERNATIONAL PLAZA, SUITE 200 FORT WORTH, TEXAS 76109-4895 (817) 320-9500 FAX: (817) 320-9565

**Freeze and Nichols**  
 CIVIL  
 1701 N. Market Street, Suite 500, LB 51  
 Dallas, Texas 75202-2001  
 Phone: (214) 920-9500  
 Fax: (214) 920-9565

CITY OF ROCKWALL, TEXAS  
 205 BYPASS CONSTRUCTION  
 PAVING PLAN AND PROFILE  
 STA 46+00 TO 51+00

NO.	ISSUE	DATE	BY	CHKD	APP'D	REVISION
1	LOWERED PROFILE FROM 49+50-56+00	10/11/09	KAS	KAS	CHN	

RECORD DRAWINGS: CJP 5/12/09  
 FILE NAME: CV-RDS-PP-PAVE10.dwg  
 VERIFY SCALE: Bar is one inch on original drawing, if not one inch on this sheet, adjust scale.

SHEET: PV-10  
 15 OF 86

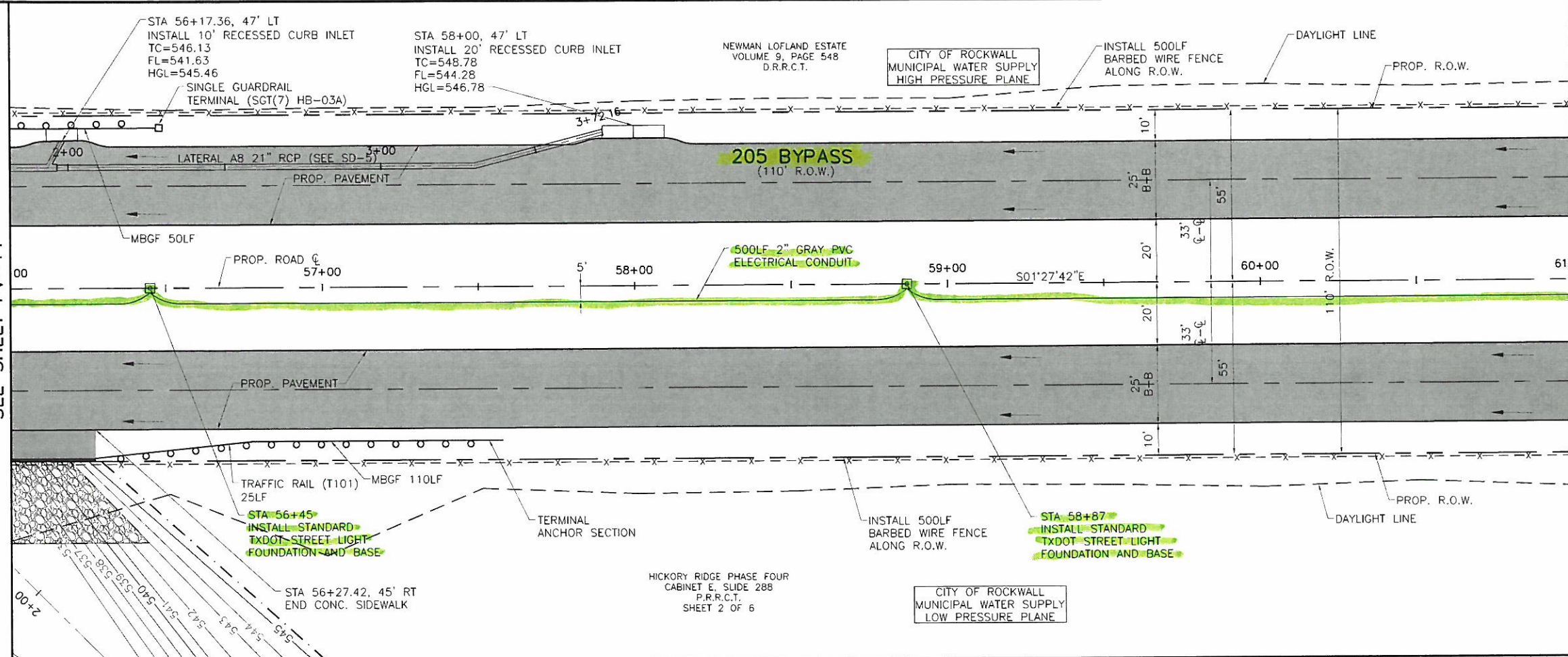


ACAD Plot of 1:1 (LMS Tech) User: IS-RDS-PP-PAVE12.DWG LAYOUT Layout1  
 L:\R0K06114\01\041515\1\RECORD\PP-CV-PP-PAVE12.DWG PLOT15: 1:1 TMS1: 0.75  
 6: REFERENCE FILES: \BASE\CAD\1-PL-SHAD \BASE\CAD\ALL-PR-ROAD \SEAL\5183282 \SEAL\5191982 and \STANDARD\34BORDER

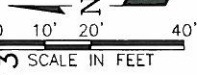
MATCHLINE STA 56+00  
SEE SHEET PV-11

MATCHLINE STA 56+00 - SEE SHEET PV-11

MATCHLINE STA 61+00  
SEE SHEET PV-13

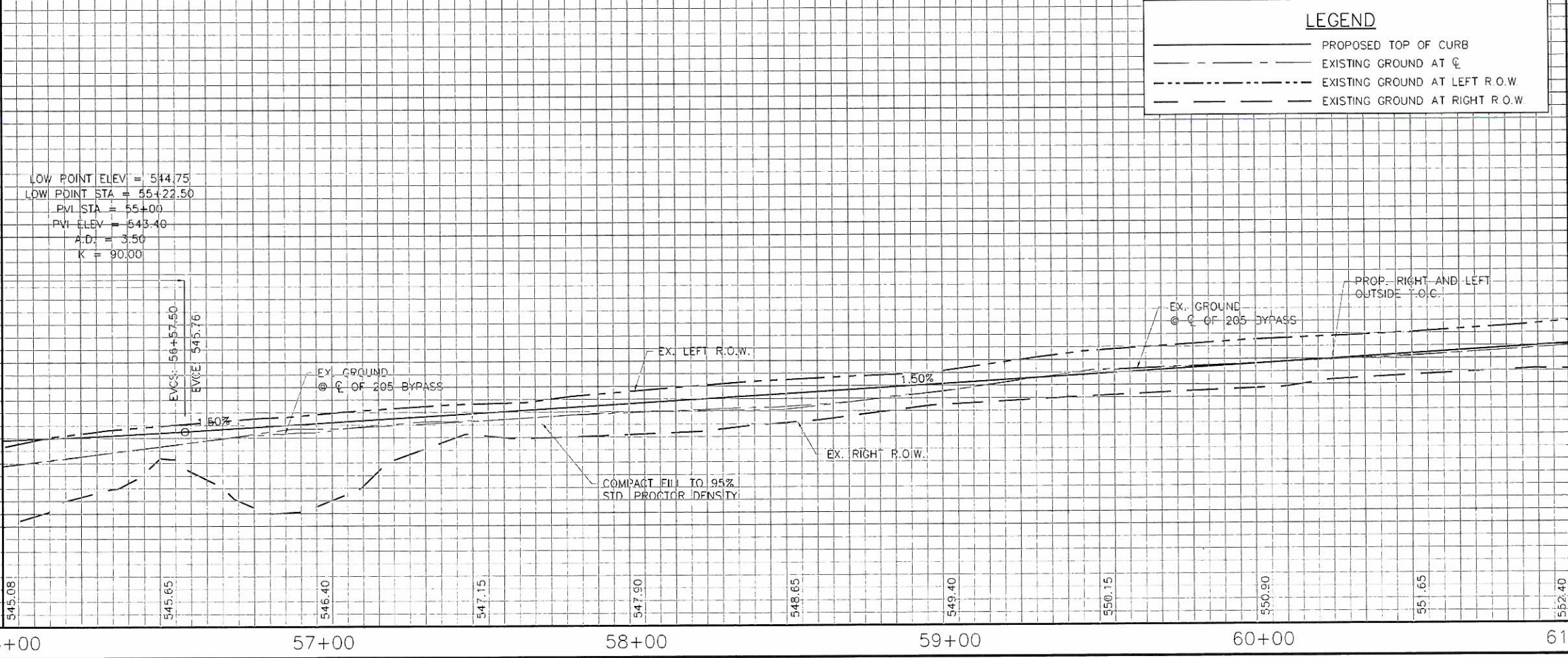


This Record Drawing is a combination of the original and revised contract drawings for this project, modified by information furnished by the contractor reflecting changes in the field. All changes are on file at the office of  
**FRESE AND NICHOLS, INC.**  
 4655 INTERNATIONAL PLAZA, SUITE 200  
 FORT WORTH, TEXAS 76109-4895  
 RECORD DRAWINGS PREPARED ON:  
 3/13/2009



SCALE:  
HORIZ: 1" = 20'  
VERT 1" = 5'

LEGEND	
	PROPOSED TOP OF CURB
	EXISTING GROUND AT C
	EXISTING GROUND AT LEFT R.O.W.
	EXISTING GROUND AT RIGHT R.O.W.

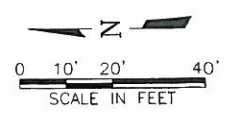
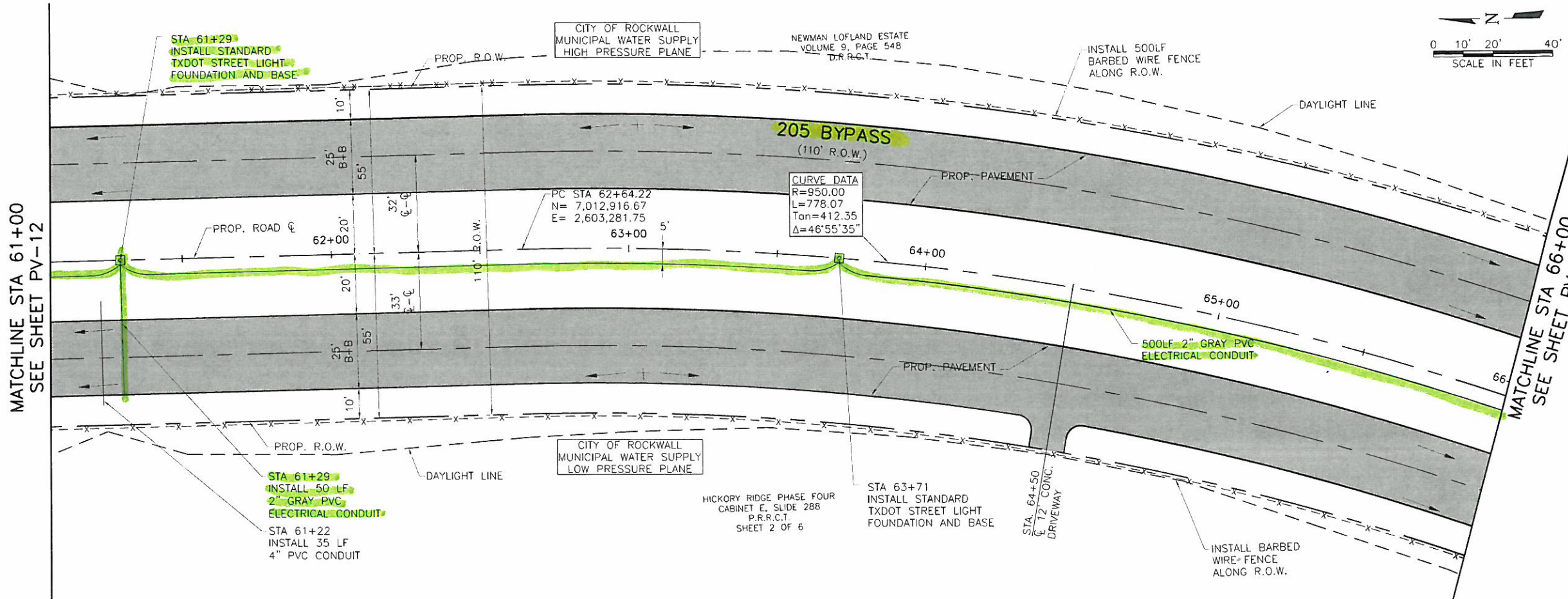


MATCHLINE STA 61+00 SEE SHEET PV-13

CITY OF ROCKWALL, TEXAS  
**205 BYPASS CONSTRUCTION**  
 CIVIL  
**PAVING PLAN AND PROFILE**  
 STA 56+00 TO 61+00

NO.	ISSUE	DATE	BY	CHKD	APP'D	REVISION
1	FOR REVISION	10/11/06	KAS			FROM 45-50-66-DR
						REVISION
						DATE
						BY
						CHKD
						APP'D
						REVISION
						DATE
						BY
						CHKD
						APP'D
						REVISION
						DATE
						BY
						CHKD
						APP'D
						REVISION
						DATE
						BY
						CHKD
						APP'D
						REVISION
						DATE
						BY
						CHKD
						APP'D
						REVISION
						DATE
						BY
						CHKD
						APP'D
						REVISION
						DATE
						BY
						CHKD
						APP'D
						REVISION
						DATE
						BY
						CHKD
						APP'D
						REVISION
						DATE
						BY
						CHKD
						APP'D
						REVISION
						DATE
						BY
						CHKD
						APP'D
						REVISION
						DATE
						BY
						CHKD
						APP'D
						REVISION
						DATE
						BY
						CHKD
						APP'D
						REVISION
						DATE
						BY
						CHKD
						APP'D
						REVISION
						DATE
						BY
						CHKD
						APP'D
						REVISION
						DATE
						BY
						CHKD
						APP'D
						REVISION
						DATE
						BY
						CHKD
						APP'D
						REVISION
						DATE
						BY
						CHKD
						APP'D
						REVISION
						DATE
						BY
						CHKD
						APP'D
						REVISION
						DATE
						BY
						CHKD
						APP'D
						REVISION
						DATE
						BY
						CHKD
						APP'D
						REVISION
						DATE
						BY
						CHKD
						APP'D
						REVISION
						DATE
						BY
						CHKD
						APP'D
						REVISION
						DATE
						BY
						CHKD
						APP'D
						REVISION
						DATE
						BY
						CHKD
						APP'D
						REVISION
						DATE
						BY
						CHKD
						APP'D
						REVISION
						DATE
						BY
						CHKD
						APP'D
						REVISION
						DATE
						BY
						CHKD
						APP'D
						REVISION
						DATE
						BY
						CHKD
						APP'D
						REVISION
						DATE
						BY
						CHKD
						APP'D
						REVISION
						DATE
						BY
						CHKD
						APP'D
						REVISION
						DATE
						BY
						CHKD
						APP'D
						REVISION
						DATE
						BY
						CHKD
						APP'D
						REVISION
						DATE
						BY
						CHKD
						APP'D
						REVISION
						DATE
						BY
						CHKD
						APP'D
						REVISION
						DATE
						BY
						CHKD
						APP'D
						REVISION
						DATE
						BY
						CHKD
						APP'D
						REVISION
						DATE
						BY
						CHKD
						APP'D
						REVISION
						DATE
						BY
						CHKD
						APP'D
						REVISION
						DATE
						BY
						CHKD
						APP'D
						REVISION
						DATE
						BY
						CHKD
						APP'D
						REVISION
						DATE
						BY
						CHKD
						APP'D
						REVISION
						DATE
						BY
						CHKD
						APP'D
						REVISION
						DATE
						BY
						CHKD
						APP'D
						REVISION
						DATE
						BY
						CHKD
						APP'D
						REVISION
						DATE
						BY
						CHKD
						APP'D
						REVISION
						DATE
						BY
						CHKD
						APP'D
						REVISION
						DATE
						BY
						CHKD
						APP'D
						REVISION
						DATE
						BY
						CHKD
						APP'D
						REVISION
						DATE

ACAD Plot 17.1s (LMS Text) User: IS  
 [R0K06114] NOT CH NETWORK\N\RECORD\A\CV-RDS-PP-PAVE13.DWG LAYOUT Layout1  
 MAY 13 2009 3:48:14 P.M. LTS 1 PLSITS 1 TWIST 90 0  
 6 REFERENCE FILES: \BASE\CV-ALL-PL-SHAD \BASE\CV-ALL-PR-ROAD \SEAL\B3282 \SEAL\B3282 \STANDARD\348BORDER

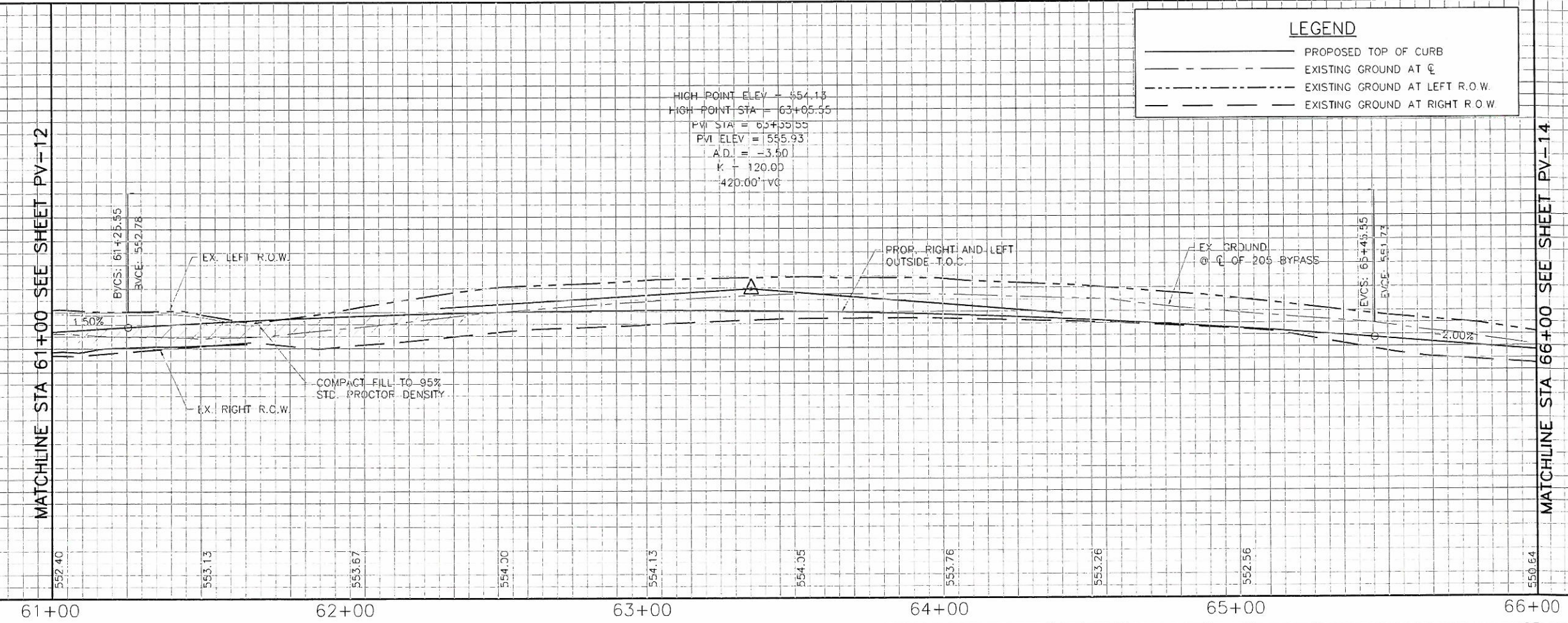


This record drawing is a continuation of the work shown on the previous sheets. The contractor shall verify all dimensions and locations of existing conditions and report any discrepancies to the engineer. The contractor shall be responsible for any errors or omissions in the field. The engineer shall not be responsible for any errors or omissions in the field. The engineer shall not be responsible for any errors or omissions in the field.

FREESE AND NICHOLS, INC.  
 4025 INTERNATIONAL PLAZA, SUITE 200  
 FORT WORTH, TEXAS 76109-4995  
 TEL: (817) 733-2200  
 FAX: (817) 733-2200  
 RECORD DRAWINGS PREPARED ON 5/13/2009



SCALE:  
 HORIZ: 1" = 20'  
 VERT: 1" = 5'



**LEGEND**

- PROPOSED TOP OF CURB
- - - EXISTING GROUND AT C/L
- · - · EXISTING GROUND AT LEFT R.O.W.
- · - · EXISTING GROUND AT RIGHT R.O.W.

CITY OF ROCKWALL, TEXAS  
**205 BYPASS CONSTRUCTION**  
 CIVIL  
**PAVING PLAN AND PROFILE**  
 STA 61+00 TO 66+00

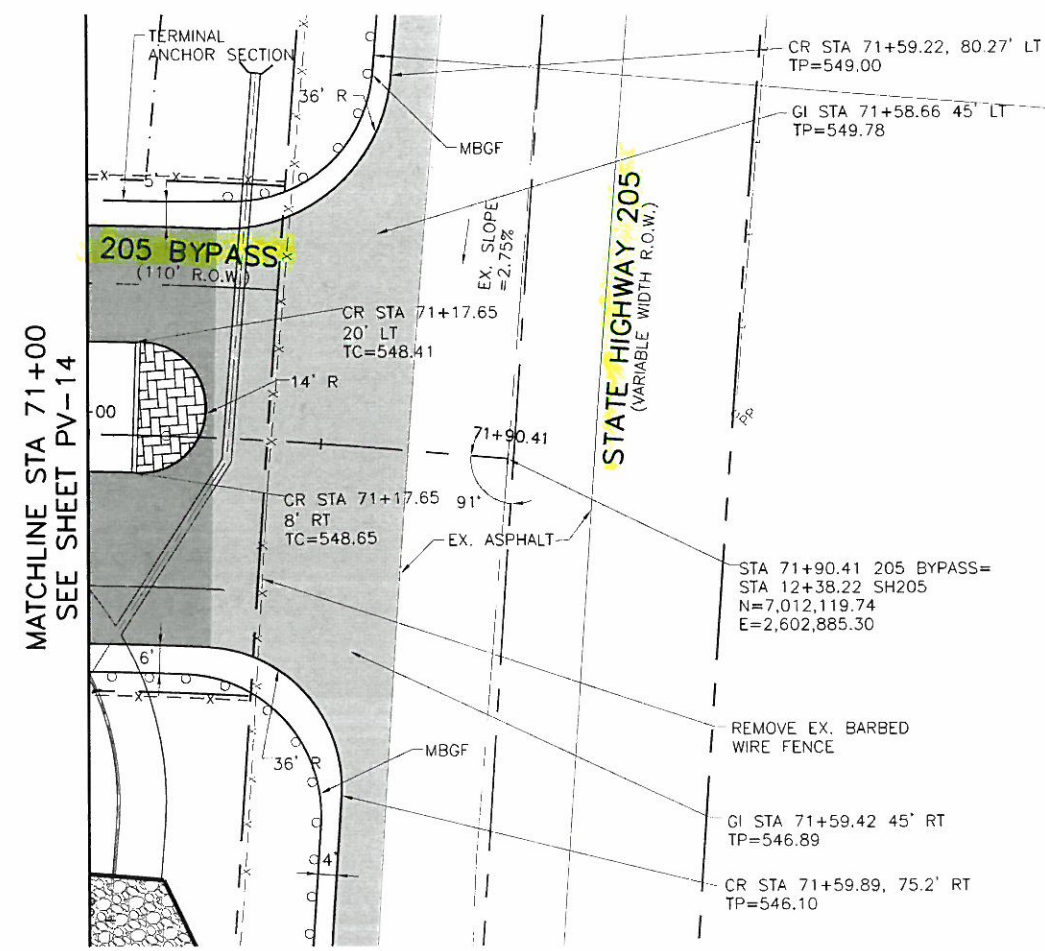
NO.	DATE	BY	CHKD.	APP'D.	DESCRIPTION
1	05/12/09	KAS	KAS	CHM	REVISED PROFILE FROM 45+50 TO 66+00

RECORD DRAWINGS: CJP 5/12/09  
 FILE NAME: C:\RDS-PP-PAVE13.dwg  
 ORIGINAL SCALE: 1" = 20'  
 VERIFY SCALE: Bar is one inch on original drawing if not one inch on this sheet, adjust scale.

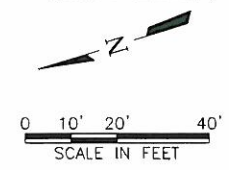
PV-13  
 18 OF 86



ACAD Plot 7.1s (LMS Text) User: IS [R0K06114] [D:\SRV\1\RECORD\VF\CV-RDS-PP-PAVE15.DWG] LAYOUT Layout1 MAR 13 2009 4:35:36 P.M. LTS: 1 PLOTS: 1 TWIST: 0, 0, 0, 138.1 REFERENCE FILES: \BASE\C\W-ALL-PL-SHAD \BASE\C\W-ALL-PL-SITE \BASE\C\W-ALL-PE-ROAD \BASE\C\W-ALL-PE-ROAD \STANDARD\4BORDER

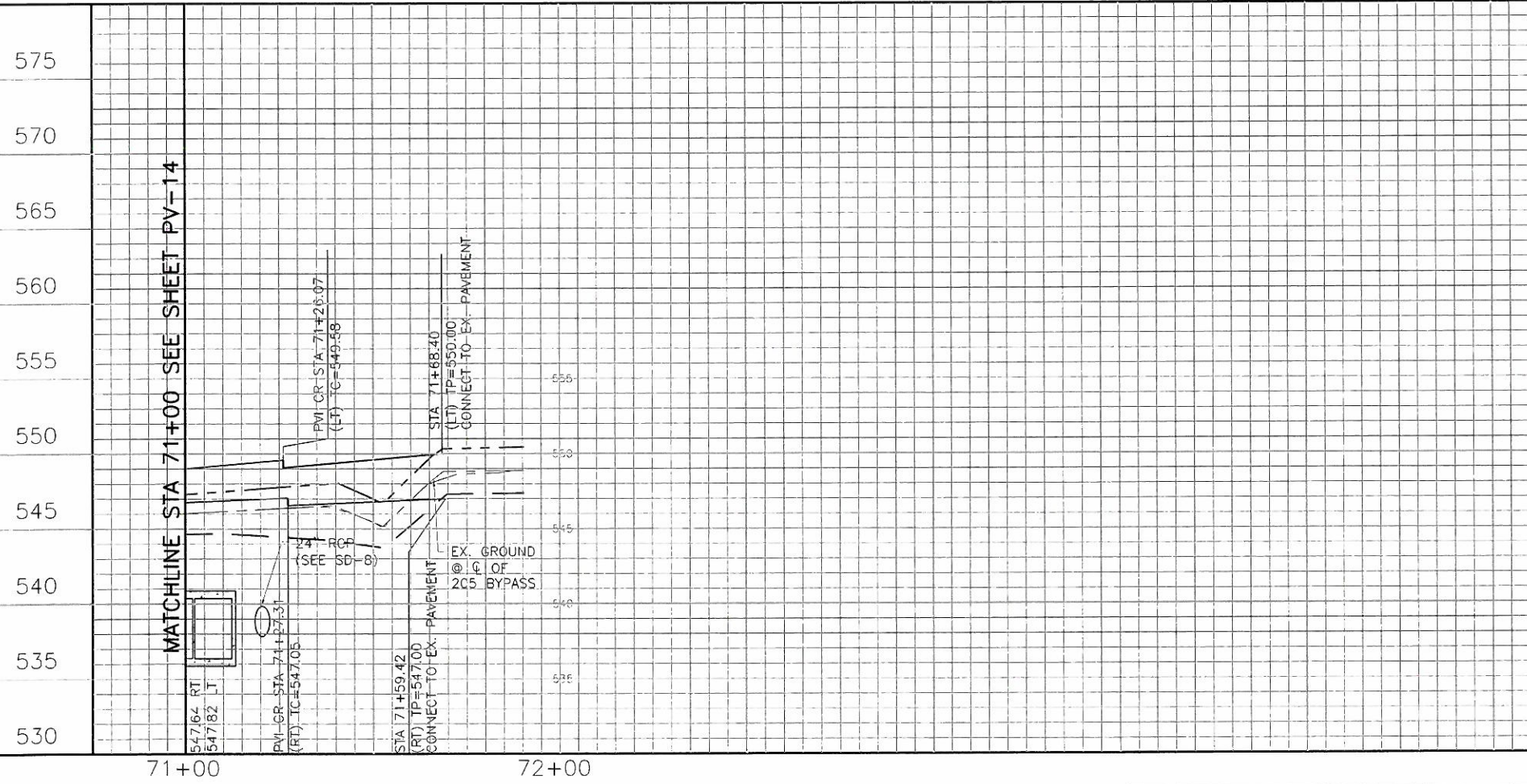


This Record Drawing is a combination of the sealed engineering contract drawings for this project, modified by information furnished to the engineer by the contractor during the Project made during construction. The original sealed drawings are on file at the offices of  
**FRESE AND NICHOLS, INC**  
 4633 INTERNATIONAL PARKWAY, SUITE 200  
 FORT WORTH, TEXAS 76149-4633  
 (817) 733-7200  
 RECORD DRAWINGS PREPARED ON 5/13/2009



ITEM	STATION AND OFFSET	NORTHING	EASTING	ELEVATION	DESCRIPTION
CP-14	72+13.67, 487' RT	7,012,486.81	2,602,565.22	536.37	COTTON SPIKE
CP-15	72+11.97, 187' LT	7,011,959.66	2,602,984.21	554.32	COTTON SPIKE

SCALE:  
 HORIZ: 1" = 20'  
 VERT 1" = 5'



**LEGEND**

- PROPOSED TOP OF CURB
- - - EXISTING GROUND AT CL
- · - · - EXISTING GROUND AT LEFT R.O.W
- · - · - EXISTING GROUND AT RIGHT R.O.W

MATCHLINE STA 71+00 SEE SHEET PV-14

THIS DRAWING IS THE PROPERTY OF FRESE AND NICHOLS, INC. IT IS TO BE USED ONLY FOR THE PROJECT AND SITE SPECIFICALLY IDENTIFIED HEREON. ANY REUSE OR MODIFICATION OF THIS DRAWING WITHOUT THE WRITTEN PERMISSION OF FRESE AND NICHOLS, INC. IS STRICTLY PROHIBITED. THE USER ASSUMES ALL LIABILITY FOR THE ACCURACY AND COMPLETENESS OF THE INFORMATION PROVIDED HEREON. FRESE AND NICHOLS, INC. IS NOT RESPONSIBLE FOR ANY ERRORS OR OMISSIONS IN THIS DRAWING.

**Freese and Nichols**  
 1701 N. Market Street, Suite 500, LB 51  
 Dallas, Texas 75202-2001  
 Phone: (214) 920-2500  
 Fax: (214) 920-2565

CITY OF ROCKWALL, TEXAS  
**205 BYPASS CONSTRUCTION**  
 CIVIL  
**PAVING PLAN AND PROFILE**  
 STA 71+00 TO END

NO.	REV.	DATE	BY	CHKD.	APP'D.
RECORD DRAWINGS			CJP	5/12/09	
VERIFY SCALE			Bar is one inch on original drawing, if not one inch on this sheet, adjust scale		
FILE NAME			CV-RDS-PP-PAVE15.dwg		
SHEET			PV-15		
20 OF 86					