

ITEM	STATION AND OFFSET	NORTHING	EASTING	ELEVATION	DESCRIPTION
CP-1	1+64.80, 51' LT	7019979.14	2,603,434.83	580.13	"X" CUT IN SIDEWALK

SCALE:  
HORIZ: 1"=20'  
VERT 1"=5'

This Record Drawing is a combination of the information shown on the sheets of this project, modified by information furnished by the contractor reflecting changes in the project made during construction. The original sheets are on file in the office of FRESSE AND NICHOLS, INC. 4855 INTERNATIONAL PLAZA, SUITE 200 FORT WORTH, TEXAS 76109-4895 RECORD DRAWINGS PREPARED ON 3/13/2009



CITY OF ROCKWALL, TEXAS  
205 BYPASS CONSTRUCTION  
PAVING PLAN AND PROFILE  
STA 1+00 TO 6+00

ACAD: Rel 17.1s (LMS Tech) User: IS  
 [R0K06114] [NOT ON NETWORK] [RECORD] [CY-RDS-PP-PAVE01 DWG] LAYOUT: Layout1  
 APR 29, 2009 1:38:15 P.M. LTS: 1.00 PSLTS: 1 TWIST: 0.0, 88.9, 0.0  
 7 REFERENCE FILES: \BASE\CV-ALL-PL-SHAD, \BASE\CV-ALL-PL-SITE, \BASE\CV-ALL-PL-DOPO, \BASE\CV-ALL-PR-ROAD, \SEAL\3.8.282, \SEAL\3.8.282, \SEAL\3.8.282, \SEAL\3.8.282

**LEGEND**

- PROPOSED TOP OF CURB
- - - EXISTING GROUND AT @
- - - EXISTING GROUND AT LEFT R.O.W.
- - - EXISTING GROUND AT RIGHT R.O.W.

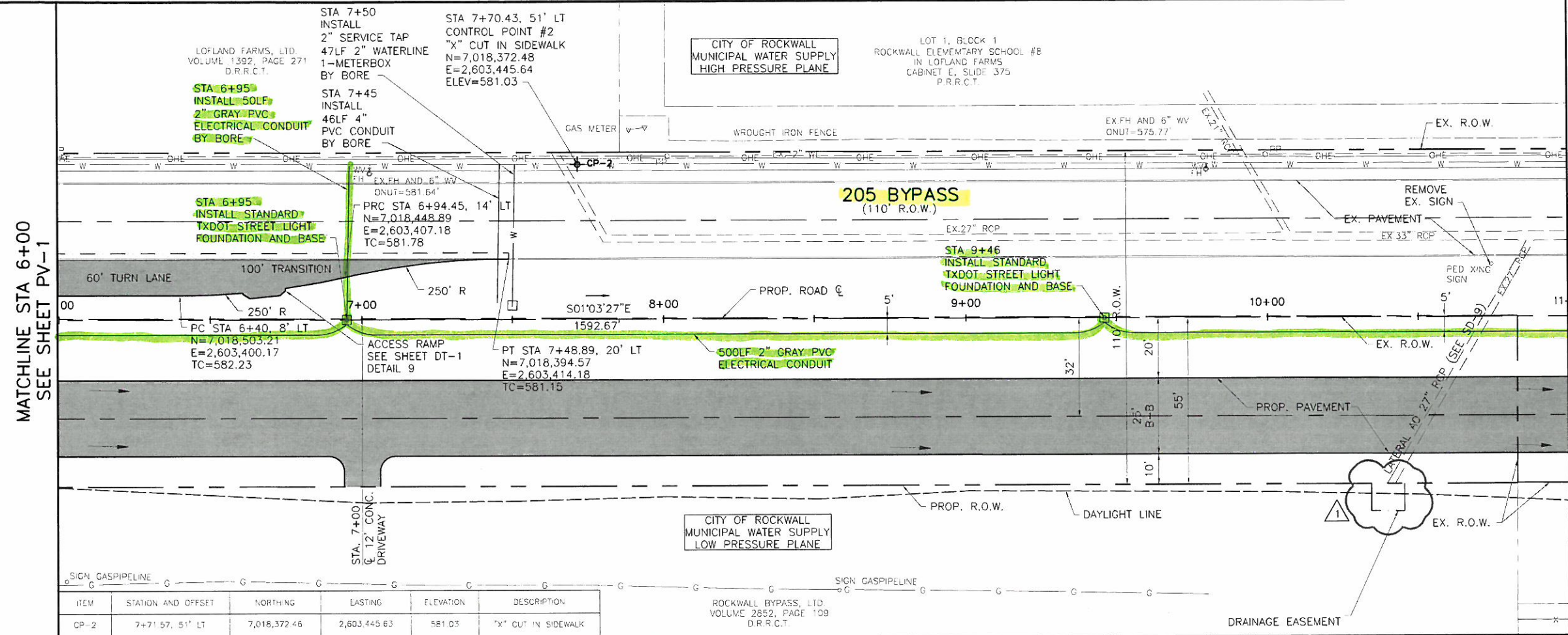
HIGH POINT ELEV = 582.59  
 HIGH POINT STA = 5+29.81  
 PVI STA = 5+80  
 PVI ELEV = 583.60  
 A.D. = -2.28  
 K = 166.72  
 330' VC

MATCHLINE STA 6+00 SEE SHEET PV-2

MATCHLINE STA 6+00 SEE SHEET PV-2

NO	ISSUE	BY	DATE	REV. NO	DESCRIPTION
1	ISSUE				
2	RECORD DRAWINGS	CJP	5/12/09		REVISED
3	VERIFY SCALE				Bar is one inch on original drawing. Verify scale on this sheet, adjust scale.

ACAD Ref: 17.1s (LMS Tech) User: JS  
 [R0K06114] [04:SRV] [N:RECORD] [CV:RDS-PP-PAVE02.DWG] [LAYOUT] [Layout1]  
 MAR 16, 2009 3:48:25 P.M. LTS 1.00 PSLTS 1 TWIST 0.0 O.C. 0.0 88.9 0.0  
 7 REFERENCE FILES: \BASE\CV-ALL-PL-SHAD \BASE\CV-ALL-PL-SITE \BASE\CV-ALL-PL-TOPO \BASE\CV-ALL-PE-ROAD \SEA\S\B\282 \SEA\S\B\382 \SEA\S\B\382 \SEA\S\B\382 \SEA\S\B\382 \SEA\S\B\382



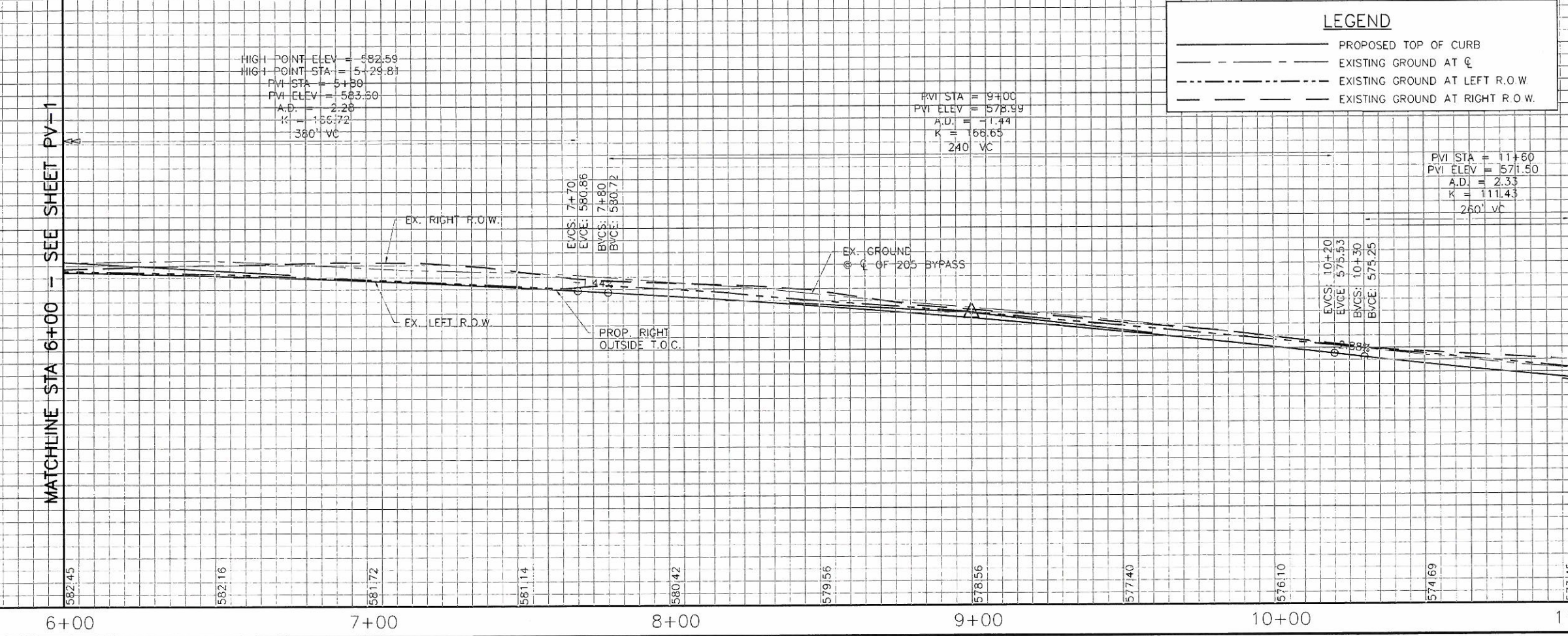
ITEM	STATION AND OFFSET	NORTHING	EASTING	ELEVATION	DESCRIPTION
CP-2	7+71.57, 51' LT	7,018,372.46	2,603,445.63	581.03	"X" CUT IN SIDEWALK

This Record Drawing is a combination of the sealed engineering contract drawings for this project, modified by information furnished to the Project made during construction. The original sealed drawings are on file at the offices of FRESSE AND NICHOLS, INC., 4055 WESBURN BLVD., SUITE 200, FORT WORTH, TEXAS 76107-4695 (817) 735-7330. RECORD DRAWINGS PREPARED ON: 3/13/2009



SCALE:  
 HORIZ: 1" = 20'  
 VERT 1" = 5'

LEGEND	
	PROPOSED TOP OF CURB
	EXISTING GROUND AT C
	EXISTING GROUND AT LEFT R.O.W
	EXISTING GROUND AT RIGHT R.O.W.



HIGH POINT ELEV = 582.59  
 HIGH POINT STA = 5+29.81  
 PVI STA = 5+30  
 PVI ELEV = 583.50  
 A.D. = -2.26  
 K = 156.72  
 380' VC

PVI STA = 9+00  
 PVI ELEV = 578.99  
 A.D. = -1.44  
 K = 166.65  
 240' VC

PVI STA = 11+60  
 PVI ELEV = 571.50  
 A.D. = 2.33  
 K = 111.43  
 260' VC

EVCS: 10+20  
 EVCE: 575.53  
 BVCS: 10+30  
 BVCE: 575.25

EVCS: 7+70  
 EVCE: 580.86  
 BVCS: 7+80  
 BVCE: 580.72

THIS DRAWING IS THE PROPERTY OF FRESSE AND NICHOLS, INC. IT IS TO BE USED ONLY FOR THE PROJECT AND SITE SPECIFICALLY IDENTIFIED HEREON. ANY REUSE OR ALTERATION OF THIS DRAWING WITHOUT THE WRITTEN PERMISSION OF FRESSE AND NICHOLS, INC. IS STRICTLY PROHIBITED. FRESSE AND NICHOLS, INC. 4055 WESBURN BLVD., SUITE 200, FORT WORTH, TEXAS 76107-4695 (817) 735-7330. RECORD DRAWINGS PREPARED ON: 3/13/2009

**Fresse and Nichols**  
 CIVIL  
 3701 N. Market Street, Suite 500, LB 51  
 Dallas, Texas 75219 (214) 920-2500  
 Fax: (214) 920-2565

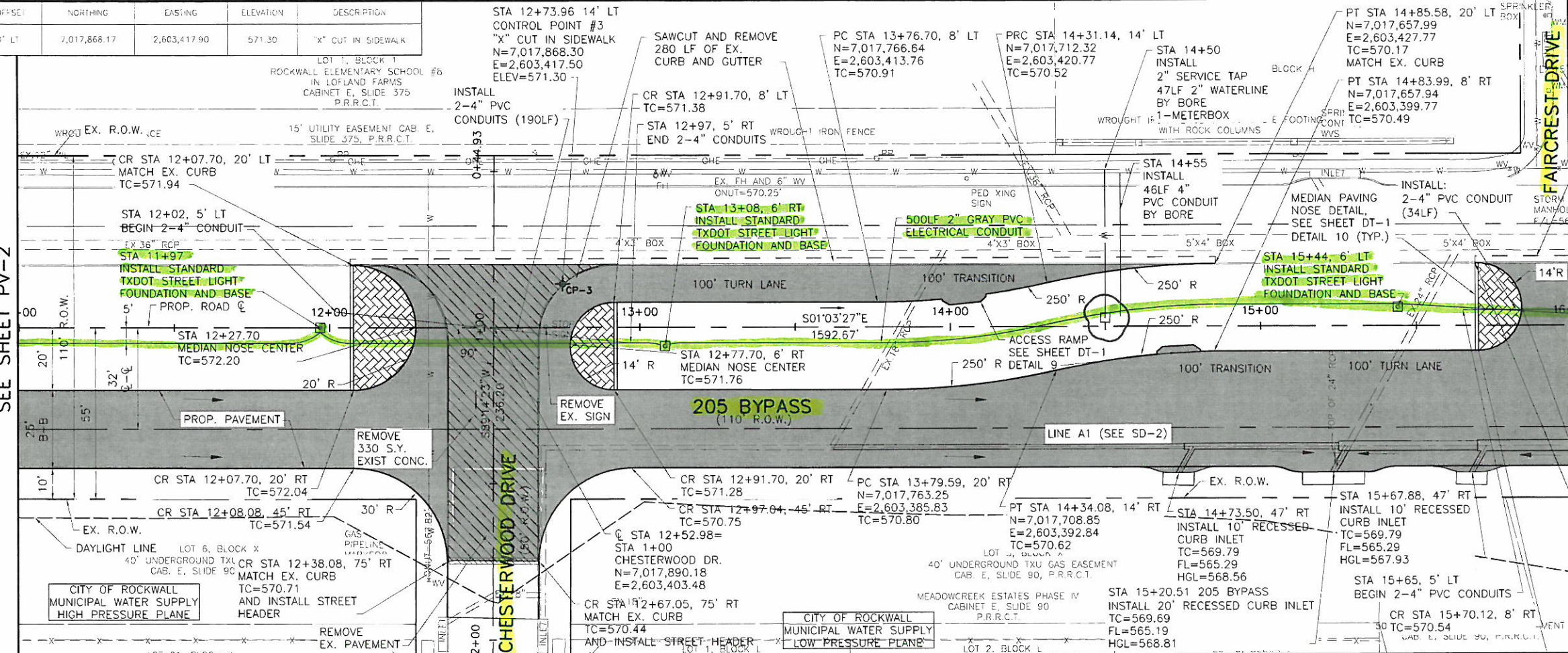
CITY OF ROCKWALL, TEXAS  
**205 BYPASS CONSTRUCTION**  
 PAVING PLAN AND PROFILE  
 STA 6+00 TO 11+00

NO.	ISSUE	DATE	BY	CHKD	REVISED	REASON
1						
2						
3						
4						
5						
6						
7						
8						
9						
10						
11						
12						
13						
14						
15						
16						
17						
18						
19						
20						
21						
22						
23						
24						
25						
26						
27						
28						
29						
30						
31						
32						
33						
34						
35						
36						
37						
38						
39						
40						
41						
42						
43						
44						
45						
46						
47						
48						
49						
50						
51						
52						
53						
54						
55						
56						
57						
58						
59						
60						
61						
62						
63						
64						
65						
66						
67						
68						
69						
70						
71						
72						
73						
74						
75						
76						
77						
78						
79						
80						
81						
82						
83						
84						
85						
86						

ITEM	STATION AND OFFSET	NORTHING	EASTING	ELEVATION	DESCRIPTION
CP-3	12+75.11, 14' LT	7,017,868.17	2,603,417.90	571.30	"X" CUT IN SIDEWALK

MATCHLINE STA 11+00  
SEE SHEET PV-2

MATCHLINE STA 16+00  
SEE SHEET PV-4



FULL DEPTH SAWCUT REMOVE, DISPOSE, AND REPLACE 30LF EX. PAVEMENT, DOWEL TO EX. MATCH ELEV.



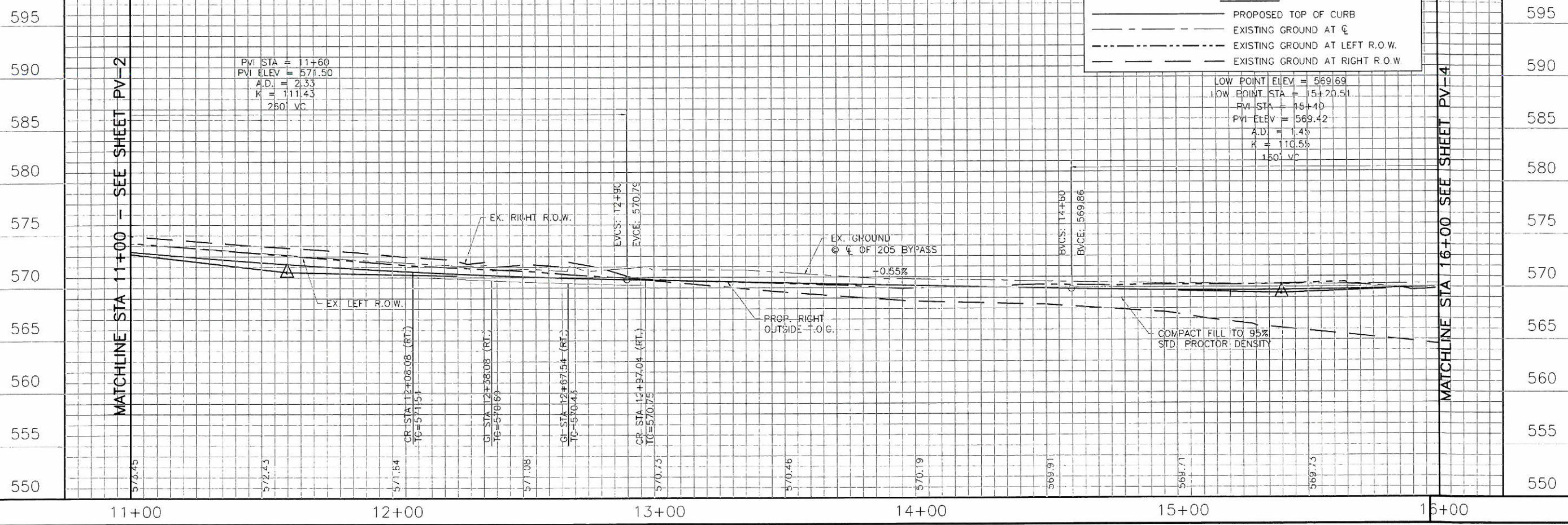
SCALE:  
HORIZ: 1"=20'  
VERT 1"=5'

LEGEND	
	PROPOSED TOP OF CURB
	EXISTING GROUND AT C
	EXISTING GROUND AT LEFT R.O.W.
	EXISTING GROUND AT RIGHT R.O.W.

LOW POINT ELEV = 569.69
LOW POINT STA = 15+20.51
PVI STA = 15+40
PVI ELEV = 569.42
A.D. = 1.45
K = 110.55
150' VC

MATCHLINE STA 11+00 - SEE SHEET PV-2

MATCHLINE STA 16+00 SEE SHEET PV-4



ACAD: P1, 17.1, (LMS Tech) User: E (R0K06114) (D:\SVP\1\PROJECTS\2005-PP-PAVE03.DWG LAYOUT Layout1 MAR 13 2009 2:32:55 P.M. LTS: 1.00 REFERENCE FILES: \BASE\CV-ALL-PI-SHAD, \BASE\CV-ALL-PI-SITE, \BASE\CV-ALL-PR-ROAD, \SEAL\S\B\3282, \SEAL\S\B\3282, and \STANDARD\34BORDER

THIS RECORD DRAWING IS A COMBINATION OF THIS PROJECT'S RECORD DRAWINGS AND THE RECORD DRAWINGS OF PREVIOUS PROJECTS. THE USER OF THIS DRAWING SHALL BE RESPONSIBLE FOR VERIFYING THE ACCURACY OF ALL INFORMATION AND DATA SHOWN HEREON. THE USER SHALL BE RESPONSIBLE FOR OBTAINING ALL NECESSARY PERMITS AND APPROVALS FROM THE APPROPRIATE AGENCIES. THE USER SHALL BE RESPONSIBLE FOR OBTAINING ALL NECESSARY INFORMATION FROM THE RECORD DRAWINGS OF PREVIOUS PROJECTS. THE USER SHALL BE RESPONSIBLE FOR OBTAINING ALL NECESSARY INFORMATION FROM THE RECORD DRAWINGS OF PREVIOUS PROJECTS.

**Freese and Nichols**  
 1701 N. Market Street, Suite 800, LB 51  
 Dallas, Texas 75202-2001  
 Phone: (214) 920-2500  
 Fax: (214) 920-2505

CITY OF ROCKWALL, TEXAS  
**205 BYPASS CONSTRUCTION**  
 CIVIL  
**PAVING PLAN AND PROFILE**  
 STA 11+00 TO 16+00

NO.	ISSUE	DATE	BY	CHKD	REVISION
1	ISSUE				

REV.	NO.	DATE	BY	CHKD	REVISION
	1	05/20/07	RAS	CHM	

RECORD DRAWINGS	FILE NAME	DATE
PAVE03.DWG	CV-PP-PAVE03.DWG	5/12/09

Bar is one inch on original drawing, if not one inch on this sheet, adjust scale.

SHEET: PV-3  
8 OF 86









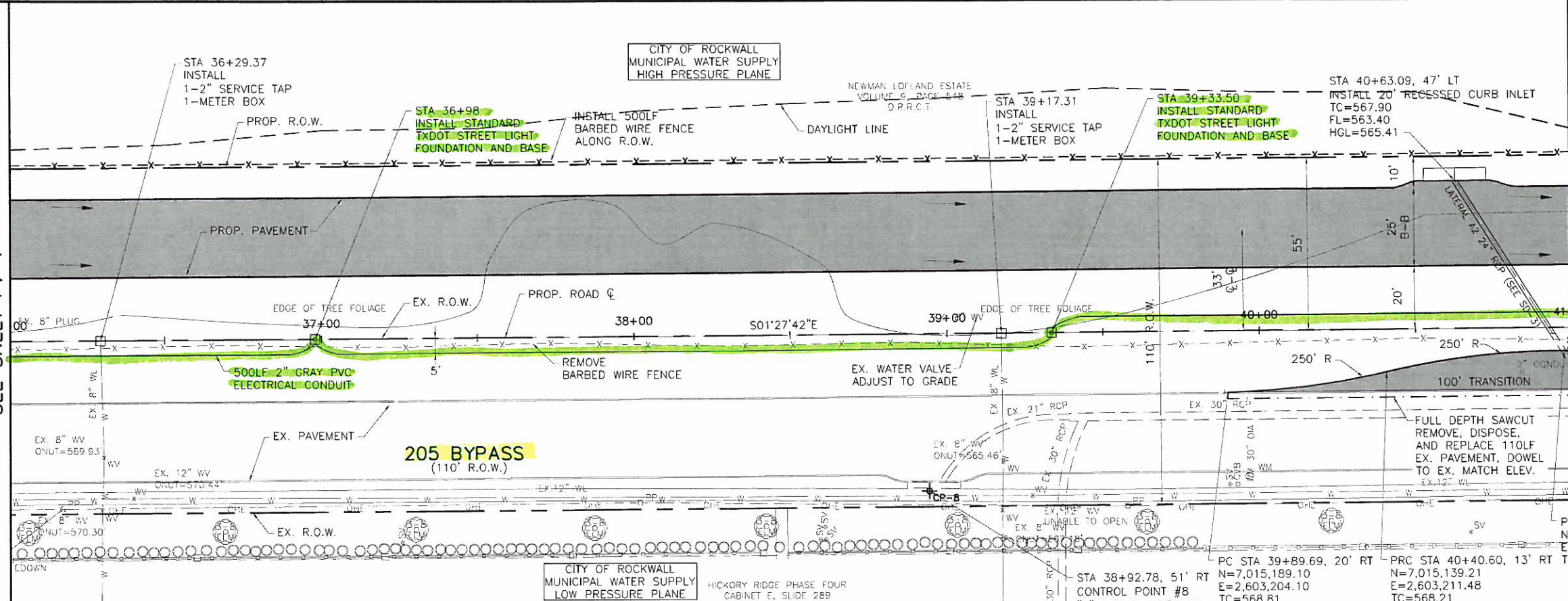
ACAD Plot 17.1s (LMS Test) User: IS  
 [R0K06114] [D:\SRV1\N\RECORD\VF\CV-RDS-PP-PAVE08.DWG \_AYOUT Layout1  
 MAR 13 2009 2:52:02 P.M. LTS: 1 PLOTS: 1 TWIST: 0, 0, 0, 88.9, 0  
 7 REFERENCE FILES: \BASE\CV-ALL-PL-SHAD, \BASE\CV-ALL-PL-SITE, \BASE\CV-ALL-PL-TOPO, \BASE\CV-ALL-PE-ROAD, \SEA\S\B\3282, \SEA\S\B\3822, \STANDARD\34BORDER

MATCHLINE STA 36+00  
 SEE SHEET PV-7

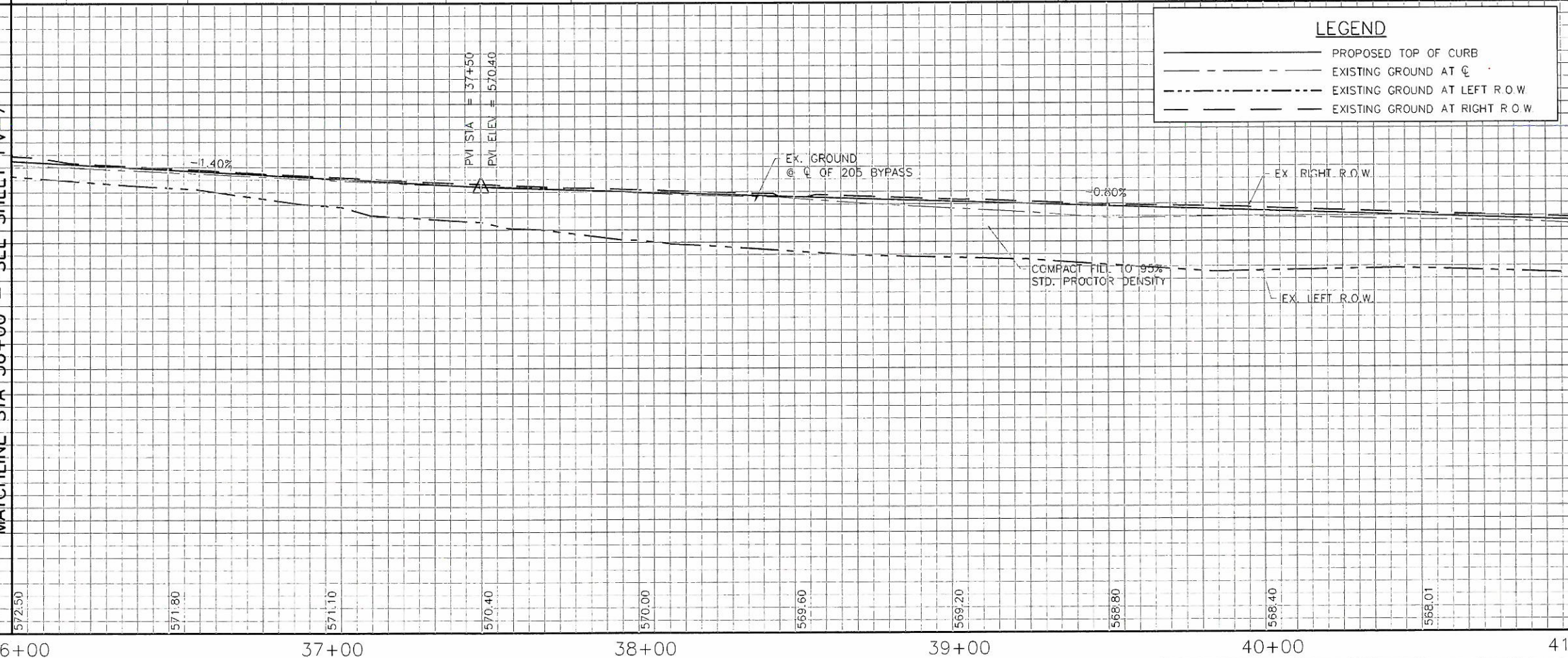
MATCHLINE STA 36+00 - SEE SHEET PV-7

MATCHLINE STA 41+00  
 SEE SHEET PV-9

MATCHLINE STA 41+00 SEE SHEET PV-9



ITEM	STATION AND OFFSET	NORTHING	EASTING	ELEVATION	DESCRIPTION
CP-B	36+93.90, 51' RT	7,015,284.93	2,603,171.18	569.70	"X" CUT IN SIDEWALK



**LEGEND**

- PROPOSED TOP OF CURB
- - - EXISTING GROUND AT C
- · - · - EXISTING GROUND AT LEFT R.O.W.
- · - · - EXISTING GROUND AT RIGHT R.O.W.

This Record Drawing is a combination of the sealed engineering contract drawings for this project, and the unsealed drawings prepared by the project engineer or other persons in the project made during construction. The original sealed drawings are on file at the offices of FREESE AND NICHOLS, INC. 4001 W. MARKET STREET, SUITE 300, DALLAS, TEXAS 75202-2001 (817) 735-7300 (817) 735-7300 RECORD DRAWINGS PREPARED ON: 3/13/2009

**Freeze and Nichols**  
 CIVIL  
 1701 N. Market Street, Suite 300, LB 51  
 Dallas, Texas 75202-2001  
 Fax: (214) 920-2566

CITY OF ROCKWALL, TEXAS  
**205 BYPASS CONSTRUCTION**  
 PAVING PLAN AND PROFILE  
 STA 36+00 TO 41+00

NO.	ISSUE	DATE	BY	CHKD	REVISED	FILE NAME	REVISION
						CV-RDS-PP-PAVE08.dwg	
RECORD DRAWINGS							
VERIFY SCALE: Bar is one inch on original drawing if not one inch on this sheet, adjust scale.							
SHEET PV-8							
13 OF 86							