

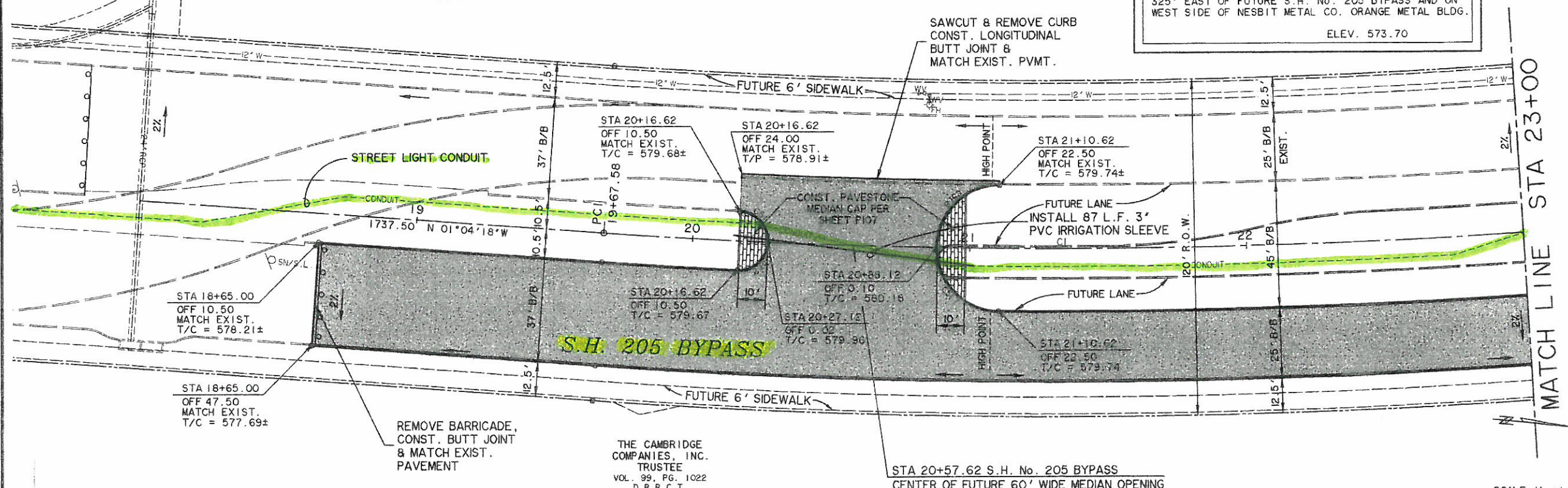
CURVE TABLE						
NO.	RADIUS	DELTA	ARC	TANGENT	CHORD	BEARING
511	10.50	89°45'34"	16.45	10.46	14.82	N 42°41'03"E
512	10.50	90°14'26"	16.54	10.54	14.88	S 47°18'57"E
517	22.50	90°30'56"	35.55	22.70	31.96	S 40°54'29"W
518	22.50	89°29'04"	35.14	22.30	31.68	N 49°05'31"W

THE CAMBRIDGE COMPANIES, INC. TRUSTEE  
VOL. 99, PG. 1022  
D.R.R.C.T.

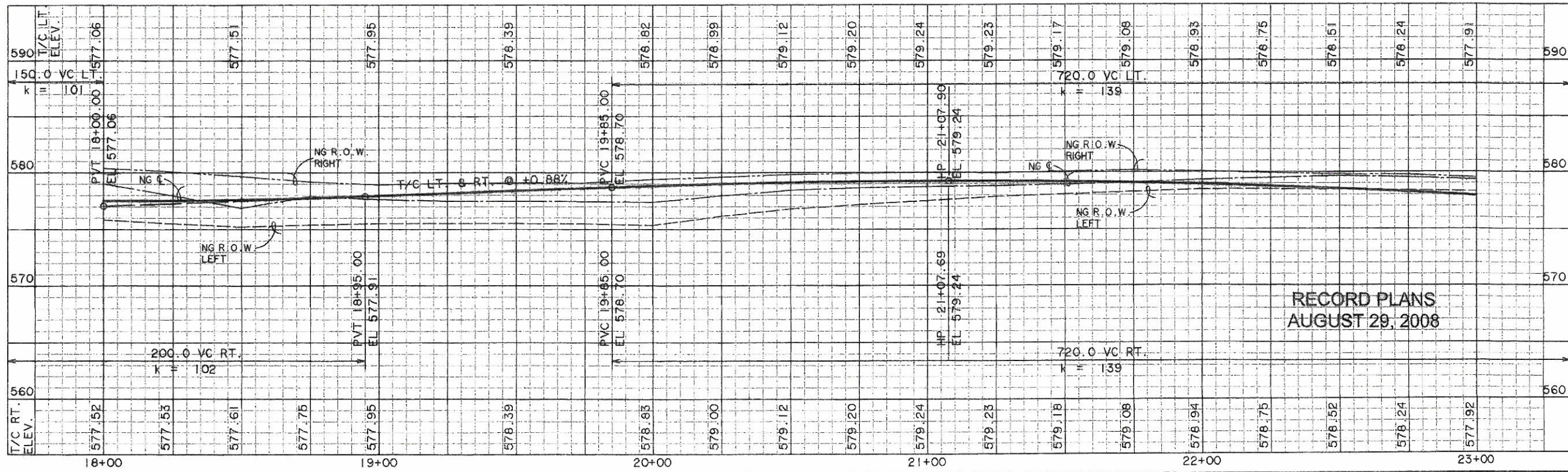
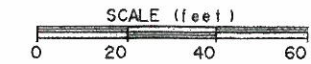
**CAUTION !!**  
EXISTING UTILITIES ARE INDICATED ON THE PLANS FROM AVAILABLE INFORMATION. IT SHALL BE THE RESPONSIBILITY OF THE CONTRACTOR TO VERIFY THE LOCATION OF ALL UTILITIES, TO NOTIFY ALL UTILITY COMPANIES OF THE CONTRACTORS OPERATIONS, TO PROTECT ALL UTILITIES FROM DAMAGE, TO REPAIR ALL UTILITIES DAMAGED DUE TO THE CONTRACTORS OPERATIONS, AND TO NOTIFY THE ENGINEER PROMPTLY OF ALL CONFLICTS OF THE WORK WITH EXISTING UTILITIES.

**\*BENCHMARK\***  
1. BOX CUT WITH 'X' CUT IN CENTER OF EXISTING SIDEWALK 2' SOUTH OF NORTH EDGE AT SOUTHEAST CORNER OF S.H. No. 205 BYPASS AND S.H. No. 276  
ELEV. 580.40  
2. BOX CUT ON SOUTHEAST TOP OF HEADWALL ON SOUTH SIDE OF I.H. No. 30 ACCESS ROAD APPROX. 325' EAST OF FUTURE S.H. No. 205 BYPASS AND ON WEST SIDE OF NESBIT METAL CO. ORANGE METAL BLDG.  
ELEV. 573.70

CURVE CI	
A	19°35'45"
D	02°17'31"
R	2500.00
L	431.73
E	855.03
	37.00



**S . H . 2 0 5 B Y P A S S**

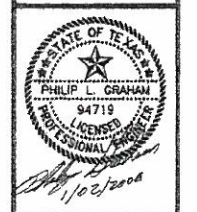


RECORD PLANS  
AUGUST 29, 2008

PREPARED BY:  
**WIA WIER & ASSOCIATES, INC.**  
ENGINEERS SURVEYORS LAND PLANNERS  
4300 BELWAY PLACE SUITE 130 ARLINGTON, TEXAS 76018 METRO (817)467-7200  
1380 U.S. HIGHWAY 287 N. SUITE 101 WINDSFIELD, TEXAS 76063 METRO (817)477-6700  
6849 ELM STREET FRODO, TEXAS 75004 METRO (214)387-8000  
www.wiaassociates.com



PHASE II S.H. 205 BYPASS  
FROM S.H. 276 TO INTERSTATE 30  
PAVING  
PLAN & PROFILE  
STA 18+00 TO 23+00



COPYRIGHT © WIER & ASSOCIATES, INC.  
LAST SHEET EDIT DATE 12-31-2007  
WAS 0411  
SHEET NO. P101

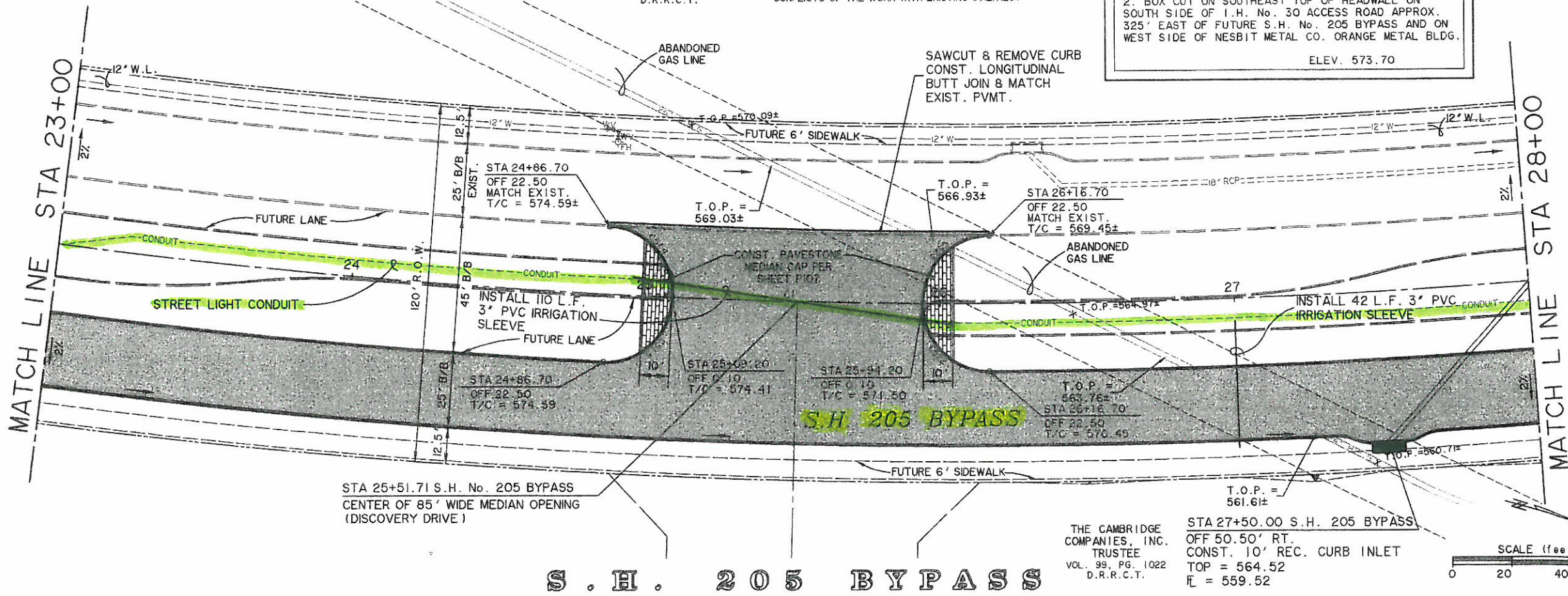
CURVE TABLE						
NO.	RADIUS	DELTA	ARC	TANGENT	CHORD	BEARING
514	22.50	89°29'04"	35.14	22.30	31.68	N 31°46'23"E
515	22.50	90°30'56"	35.55	22.70	31.96	S 58°13'37"E
522	22.50	90°30'56"	35.55	22.70	31.96	S 29°18'34"W
523	22.50	89°29'04"	35.14	22.30	31.68	N 60°41'26"W

THE CAMBRIDGE COMPANIES, INC. TRUSTEE  
VOL. 99, PG. 1022  
D.R.R.C.T.

**CAUTION !!**  
EXISTING UTILITIES ARE INDICATED ON THE PLANS FROM AVAILABLE INFORMATION. IT SHALL BE THE RESPONSIBILITY OF THE CONTRACTOR TO VERIFY THE LOCATION OF ALL UTILITIES. TO NOTIFY ALL UTILITY COMPANIES OF THE CONTRACTOR'S OPERATIONS, TO PROTECT ALL UTILITIES FROM DAMAGE, TO REPAIR ALL UTILITIES DAMAGED DUE TO THE CONTRACTOR'S OPERATIONS, AND TO NOTIFY THE ENGINEER PROMPTLY OF ALL CONFLICTS OF THE WORK WITH EXISTING UTILITIES.

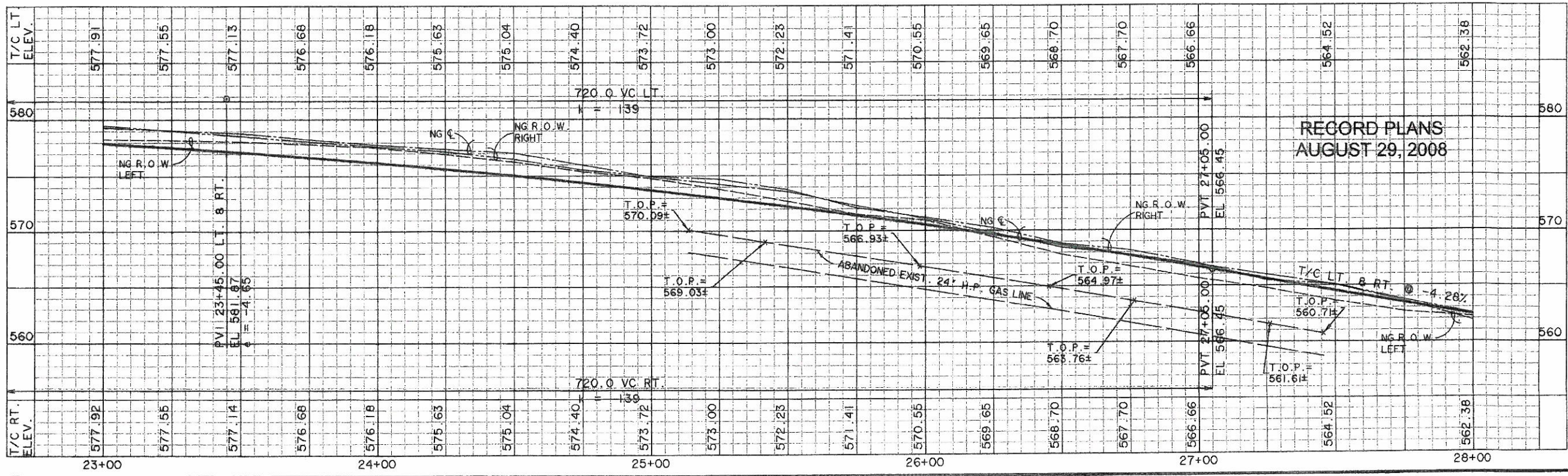
**\*BENCHMARK\***  
1. BOX CUT WITH 'X' CUT IN CENTER OF EXISTING SIDEWALK 2' SOUTH OF NORTH EDGE AT SOUTHEAST CORNER OF S.H. No. 205 BYPASS AND S.H. No. 276  
ELEV. 580.40  
2. BOX CUT ON SOUTHEAST TOP OF HEADWALL ON SOUTH SIDE OF I.H. No. 30 ACCESS ROAD APPROX. 325' EAST OF FUTURE S.H. No. 205 BYPASS AND ON WEST SIDE OF NESBIT METAL CO. ORANGE METAL BLDG.  
ELEV. 573.70

CURVE C1	
A	19°35'45"
B	02°17'31"
C	2500.00
D	431.73
E	855.03
F	37.00



THE CAMBRIDGE COMPANIES, INC. TRUSTEE  
VOL. 99, PG. 1022  
D.R.R.C.T.

STA 27+50.00 S.H. 205 BYPASS  
OFF 50.50' RT.  
CONST. 10' REC. CURB INLET  
TOP = 564.52  
FL = 559.52

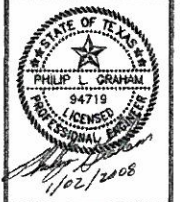


RECORD PLANS  
AUGUST 29, 2008

PREPARED BY:  
**WIA WIER & ASSOCIATES, INC.**  
ENGINEERS SURVEYORS LAND PLANNERS  
4300 BELTWAY PLACE SUITE 130 ARLINGTON, TEXAS 76016 METRO (817)467-7700  
1300 U.S. HIGHWAY 207 N. SUITE 101 WANSFELD, TEXAS 76083 METRO (817)477-8700  
8849 ELM STREET FROST, TEXAS 75034 METRO (214)397-8000  
www.wiaassociates.com



PHASE II S.H. 205 BYPASS  
FROM S.H. 276 TO INTERSTATE 30  
PAVING  
PLAN & PROFILE  
STA 23+00 TO 28+00



COPYRIGHT ©  
WIER & ASSOCIATES, INC.  
LAST SHEET EDIT  
DATE: 10-31-2007  
WAH: 04/11  
**SHEET NO. P102**

TIME: 10:09 FILE: PAVES3-Phase2-04141.dwg

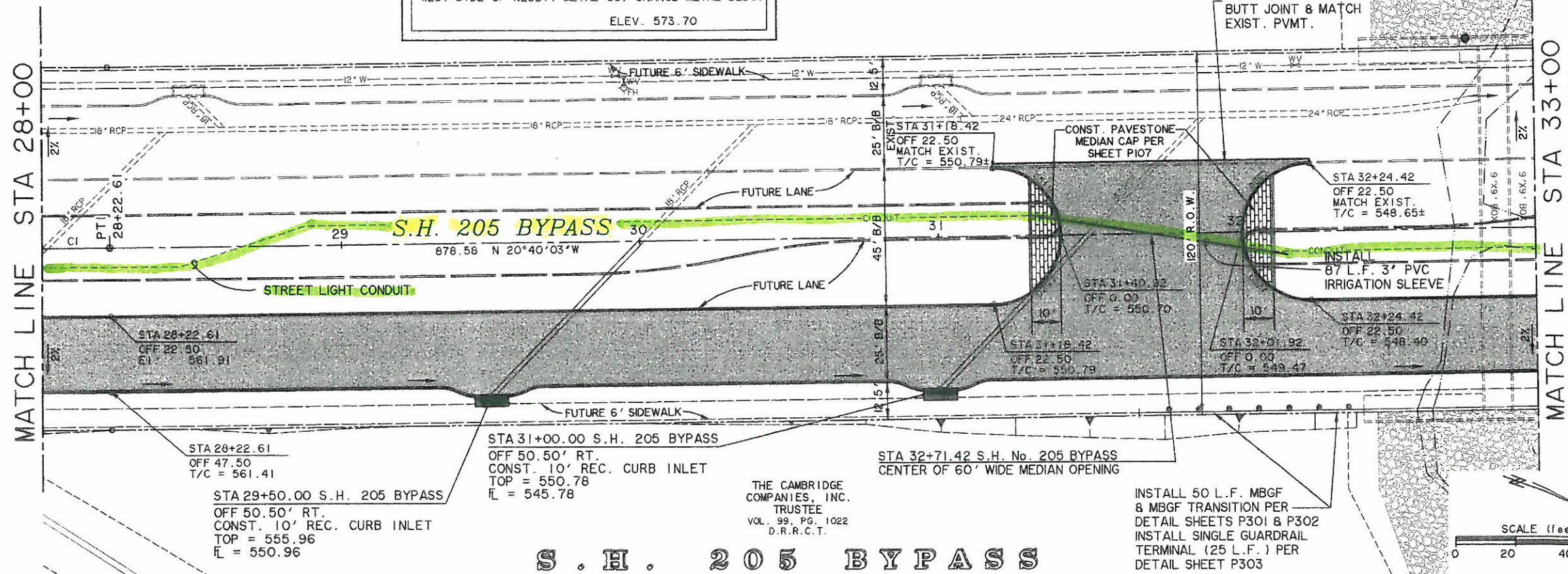
CURVE C1	
A	19°35'45"
D	02°17'31"
R	2500.00
T	431.73
L	855.03
E	37.00

**CAUTION !!**  
 EXISTING UTILITIES ARE INDICATED ON THE PLANS FROM AVAILABLE INFORMATION. IT SHALL BE THE RESPONSIBILITY OF THE CONTRACTOR TO VERIFY THE LOCATION OF ALL UTILITIES, TO NOTIFY ALL UTILITY COMPANIES OF THE CONTRACTORS OPERATIONS, TO PROTECT ALL UTILITIES FROM DAMAGE, TO REPAIR ALL UTILITIES DAMAGED DUE TO THE CONTRACTORS OPERATIONS, AND TO NOTIFY THE ENGINEER PROMPTLY OF ALL CONFLICTS OF THE WORK WITH EXISTING UTILITIES.

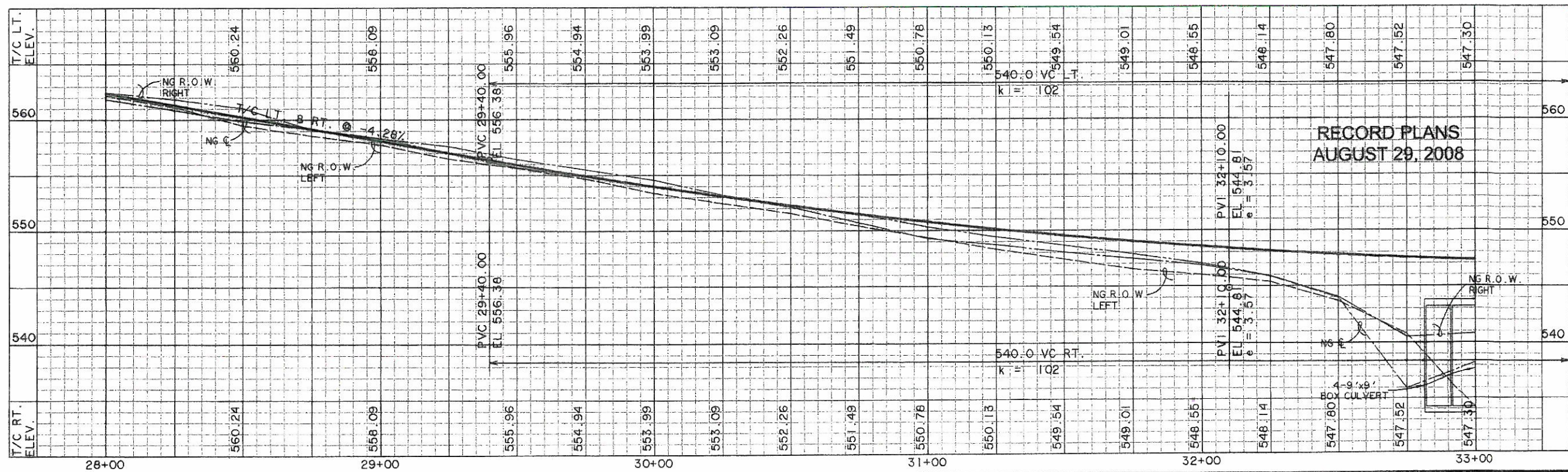
**\*BENCHMARK\***  
 1. BOX CUT WITH 'X' CUT IN CENTER OF EXISTING SIDEWALK 2' SOUTH OF NORTH EDGE AT SOUTHEAST CORNER OF S.H. No. 205 BYPASS AND S.H. No. 276  
 ELEV. 580.40  
 2. BOX CUT ON SOUTHEAST TOP OF HEADWALL ON SOUTH SIDE OF I.H. No. 30 ACCESS ROAD APPROX. 325' EAST OF FUTURE S.H. No. 205 BYPASS AND ON WEST SIDE OF NESSBIT METAL CO. ORANGE METAL BLDG.  
 ELEV. 573.70

THE CAMBRIDGE COMPANIES, INC.  
 TRUSTEE  
 VOL. 99, PG. 1022  
 D.R.R.C.T.

CURVE TABLE						
NO.	RADIUS	DELTA	ARC	TANGENT	CHORD	BEARING
519	22.50	90°00'00"	35.34	22.50	31.82	N 24°19'57"E
520	22.50	90°00'00"	35.34	22.50	31.82	S 65°40'03"E
527	22.50	90°00'00"	35.34	22.50	31.82	S 24°19'57"W
528	22.50	90°00'00"	35.34	22.50	31.82	N 65°40'03"W



**S . H . 2 0 5 B Y P A S S**

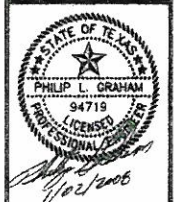


RECORD PLANS  
 AUGUST 29, 2008

PREPARED BY:  
**WIA WIER & ASSOCIATES, INC.**  
 ENGINEERS SURVEYORS LAND PLANNERS  
 4300 BELWAY PLACE SUITE 130 ARLINGTON, TEXAS 76018 METRO (817)467-7700  
 1300 U.S. HIGHWAY 207 N. SUITE 101 WAREFIELD, TEXAS 76093 METRO (817)477-0700  
 6849 ELM STREET, FROSTO, TEXAS 75034 METRO (214)397-8000  
 www.wierassociates.com



PHASE II S.H. 205 BYPASS  
 FROM S.H. 276 TO INTERSTATE 30  
 PAVING  
 PLAN & PROFILE  
 STA 28+00 TO 33+00



COPYRIGHT ©  
 WIER & ASSOCIATES, INC.  
 LAST SHEET FOOT  
 DATE: 10/27/2007  
 WAW 04161  
**SHEET NO. P103**



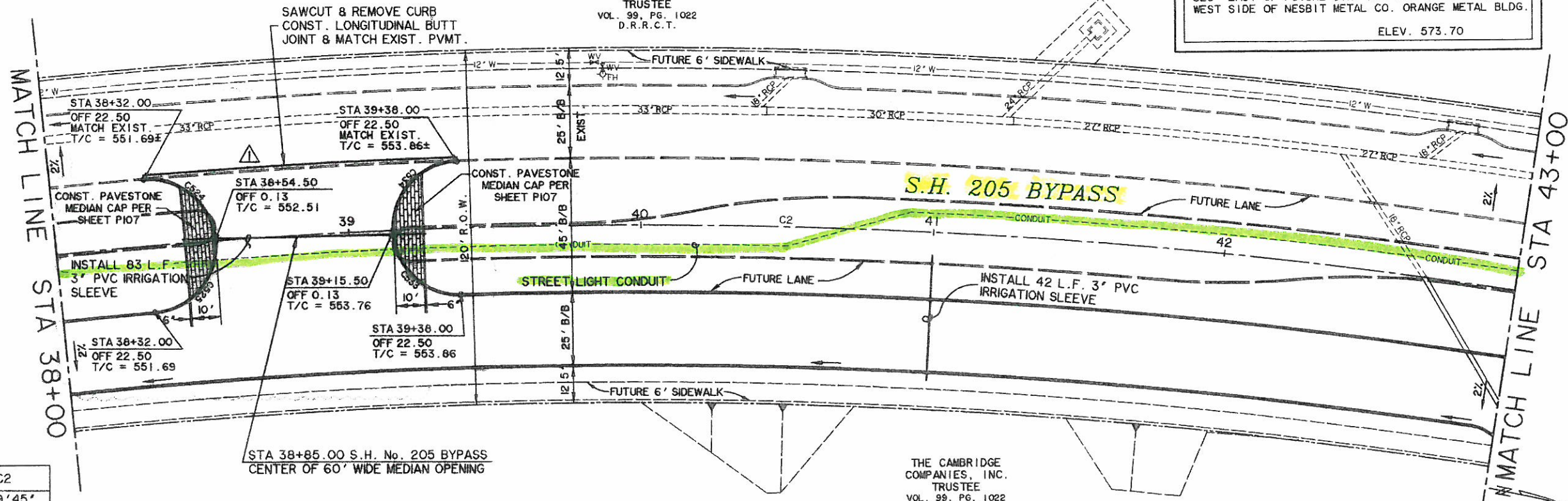
2/20/08	MOVED MEDIAN OPENING	PLG	
NO.	DATE	DESCRIPTION	BY

**CAUTION !!**  
 EXISTING UTILITIES ARE INDICATED ON THE PLANS FROM AVAILABLE INFORMATION. IT SHALL BE THE RESPONSIBILITY OF THE CONTRACTOR TO VERIFY THE LOCATION OF ALL UTILITIES, TO NOTIFY ALL UTILITY COMPANIES OF THE CONTRACTORS OPERATIONS, TO PROTECT ALL UTILITIES FROM DAMAGE, TO REPAIR ALL UTILITIES DAMAGED DUE TO THE CONTRACTORS OPERATIONS, AND TO NOTIFY THE ENGINEER PROMPTLY OF ALL CONFLICTS OF THE WORK WITH EXISTING UTILITIES.

NO.	RADIUS	DELTA	ARC TANGENT	CHORD	BEARING
524	22.50	90°39'40"	35.60	22.76	32.00 N 28°30'23"E
525	22.50	89°20'20"	35.08	22.24	31.64 S 61°29'37"E
533	22.50	89°20'20"	35.08	22.24	31.64 S 30°57'36"W
534	22.50	90°39'40"	35.60	22.76	32.00 N 59°02'24"W

THE CAMBRIDGE COMPANIES, INC.  
 TRUSTEE  
 VOL. 99, PG. 1022  
 D.R.R.C.T.

**\*BENCHMARK\***  
 1. BOX CUT WITH 'X' CUT IN CENTER OF EXISTING SIDEWALK 2' SOUTH OF NORTH EDGE AT SOUTHEAST CORNER OF S.H. No. 205 BYPASS AND S.H. No. 276  
 ELEV. 560.40  
 2. BOX CUT ON SOUTHEAST TOP OF HEADWALL ON SOUTH SIDE OF I.H. No. 30 ACCESS ROAD APPROX. 325' EAST OF FUTURE S.H. No. 205 BYPASS AND ON WEST SIDE OF NESBIT METAL CO. ORANGE METAL BLDG.  
 ELEV. 573.70



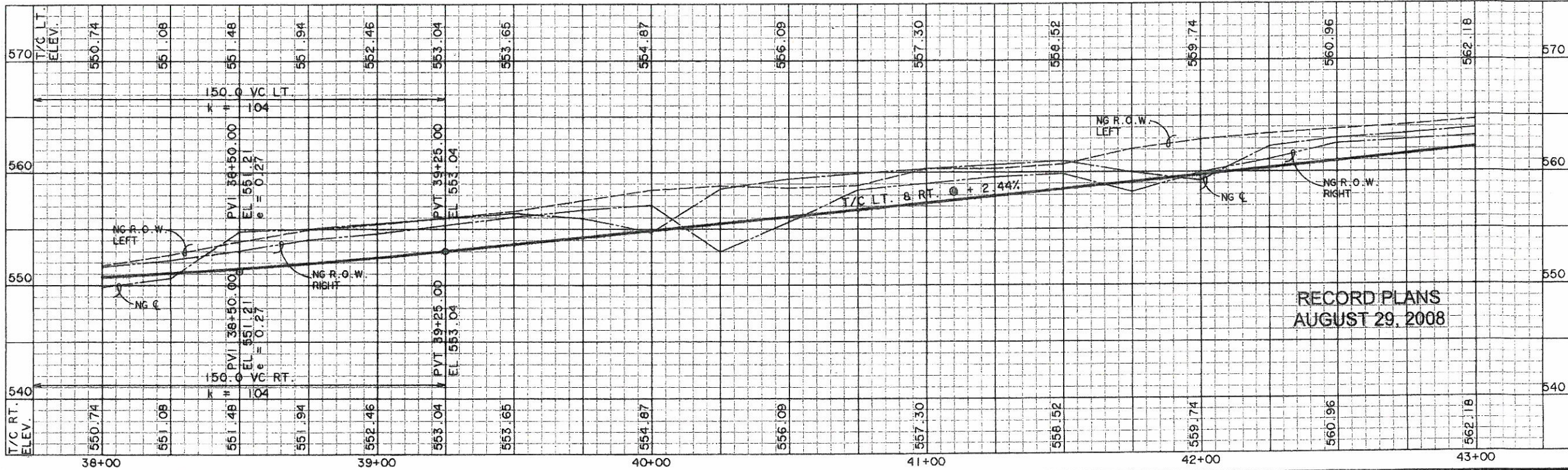
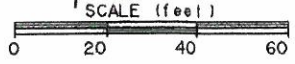
**CURVE C2**

A	20°19'45"
D	02°56'18"
R	1950.00
T	349.62
L	691.88
E	31.09

STA 38+85.00 S.H. No. 205 BYPASS  
 CENTER OF 60' WIDE MEDIAN OPENING

THE CAMBRIDGE COMPANIES, INC.  
 TRUSTEE  
 VOL. 99, PG. 1022  
 D.R.R.C.T.

**S . H . 2 0 5 B Y P A S S**

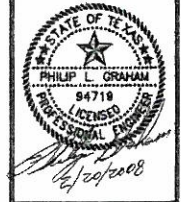


RECORD PLANS  
 AUGUST 29, 2008

PREPARED BY:  
**WIA WIER & ASSOCIATES, INC.**  
 ENGINEERS SURVEYORS LAND PLANNERS  
 1400 BELTWAY PLACE SUITE 130 ARLINGTON, TEXAS 76010 METRO (817)457-7700  
 1309 U.S. HIGHWAY 207 N. SUITE 101 WINTERFIELD, TEXAS 76683 METRO (817)477-8700  
 6849 EDM STREET FRISCO, TEXAS 75034 METRO (214)387-8800  
 www.wierassociates.com



PHASE II S.H. 205 BYPASS  
 FROM S.H. 276 TO INTERSTATE 30  
 PAVING  
 PLAN & PROFILE  
 STA 38+00 TO 43+00



COPYRIGHT ©  
 WIER & ASSOCIATES, INC.  
 LAST SHEET EDIT  
 DATE 02-20-2008  
 WAR 0481  
**SHEET NO. P105**

THE CAMBRIDGE COMPANIES, INC. TRUSTEE  
VOL. 99, PG. 1022  
D.R.R.C.T.

THE CAMBRIDGE COMPANIES, INC. TRUSTEE  
VOL. 101, PG. 795  
D.R.R.C.T.

CURVE TABLE						
NO.	RADIUS	DELTA	ARC	TANGENT	CHORD	BEARING
115	300.00	13°03'06"	68.34	34.32	68.19	N 06°11'15"E
116	300.00	13°03'06"	68.34	34.32	68.19	S 06°11'15"W
505	665.00	06°28'52"	75.22	37.65	75.18	N 03°34'44"W
506	665.00	06°28'52"	75.22	37.65	75.18	S 03°34'44"E
530	22.50	90°39'40"	35.60	22.76	32.00	N 42°47'55"E
531	22.50	89°20'20"	35.08	22.24	31.63	S 47°12'05"E
535	22.50	90°00'00"	35.34	22.50	31.82	S 44°39'42"W
536	22.50	90°00'00"	35.34	22.50	31.82	N 45°20'18"W

**\*BENCHMARKS\***

- BOX CUT WITH 'X' CUT IN CENTER OF EXISTING SIDEWALK 2' SOUTH OF NORTH EDGE AT SOUTHEAST CORNER OF S.H. No. 205 BYPASS AND S.H. No. 276  
ELEV. 560.40
- BOX CUT ON SOUTHEAST TOP OF HEADWALL ON SOUTH SIDE OF I.H. No. 30 ACCESS ROAD APPROX. 325' EAST OF FUTURE S.H. No. 205 BYPASS AND ON WEST SIDE OF NESBIT METAL CO. ORANGE METAL BLDG.  
ELEV. 573.70

SAWCUT & REMOVE CURB  
CONST. LONGITUDINAL  
BUTT JOINT & MATCH  
EXIST. PVMT.

STA 43+71.42 S.H. No. 205 BYPASS  
CENTER OF 60' WIDE MEDIAN OPENING

MATCH LINE STA 43+00

MATCH LINE STA 48+00

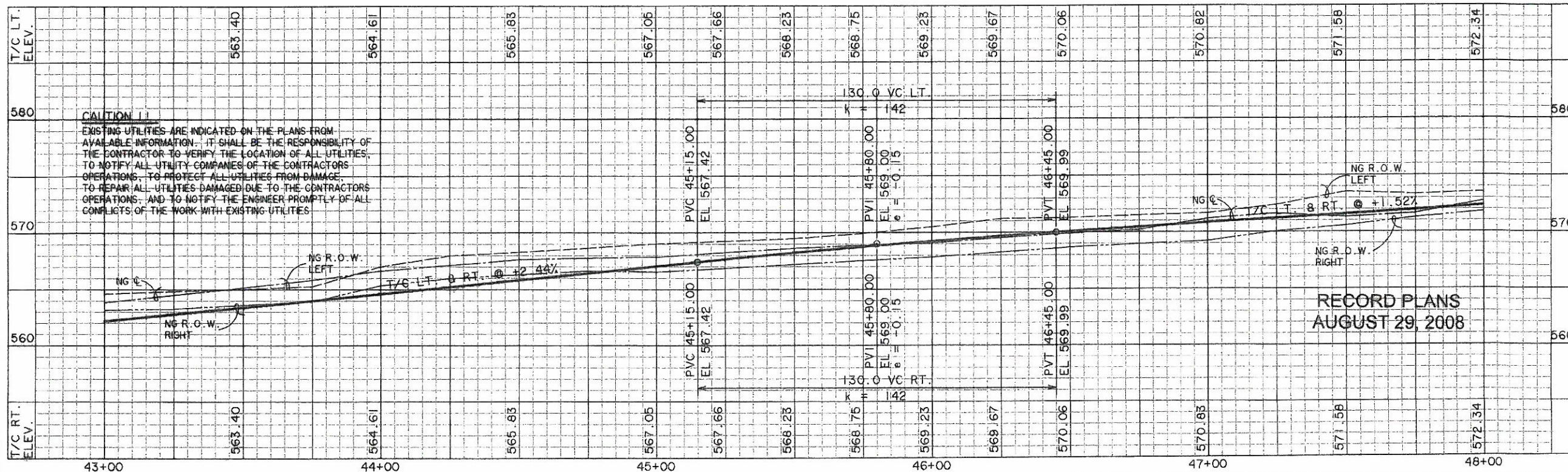
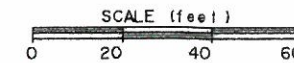
INSTALL 87 L.F.  
3" PVC IRRIGATION  
SLEEVE

CURVE C2	
A	20°19'45"
D	02°56'18"
R	1950.00
L	349.62
E	691.88
	31.09

STA 43+10.00 S.H. 205 BYPASS  
OFF 50.50' RT.  
10' REC. CURB INLET  
TOP = 562.42  
L = 557.42

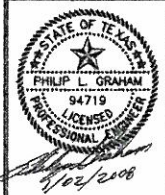
**S . H . 2 0 5 B Y P A S S**

THE CAMBRIDGE COMPANIES, INC. TRUSTEE  
VOL. 101, PG. 795  
D.R.R.C.T.



PREPARED BY:  
**WMA WIER & ASSOCIATES, INC.**  
ENGINEERS SURVEYORS LAND PLANNERS  
4300 BELTWAY PLACE SUITE 130 ARLINGTON, TEXAS 76010 METRO (817)467-7700  
1300 U.S. HIGHWAY 281 N. SUITE 101 WAREHOUSING, TEXAS 76788 METRO (817)477-6700  
6800 ELM STREET FRISCO, TEXAS 75034 METRO (214)387-8600  
www.wmaassociates.com

PHASE II S.H. 205 BYPASS  
FROM S.H. 276 TO INTERSTATE 30  
PAVING  
PLAN & PROFILE  
STA 43+00 TO 48+00



COPYRIGHT ©  
WIER & ASSOCIATES, INC.  
LAST SHEET EDIT  
DATE 10-31-2007  
WAH G4M1  
SHEET NO.  
P106

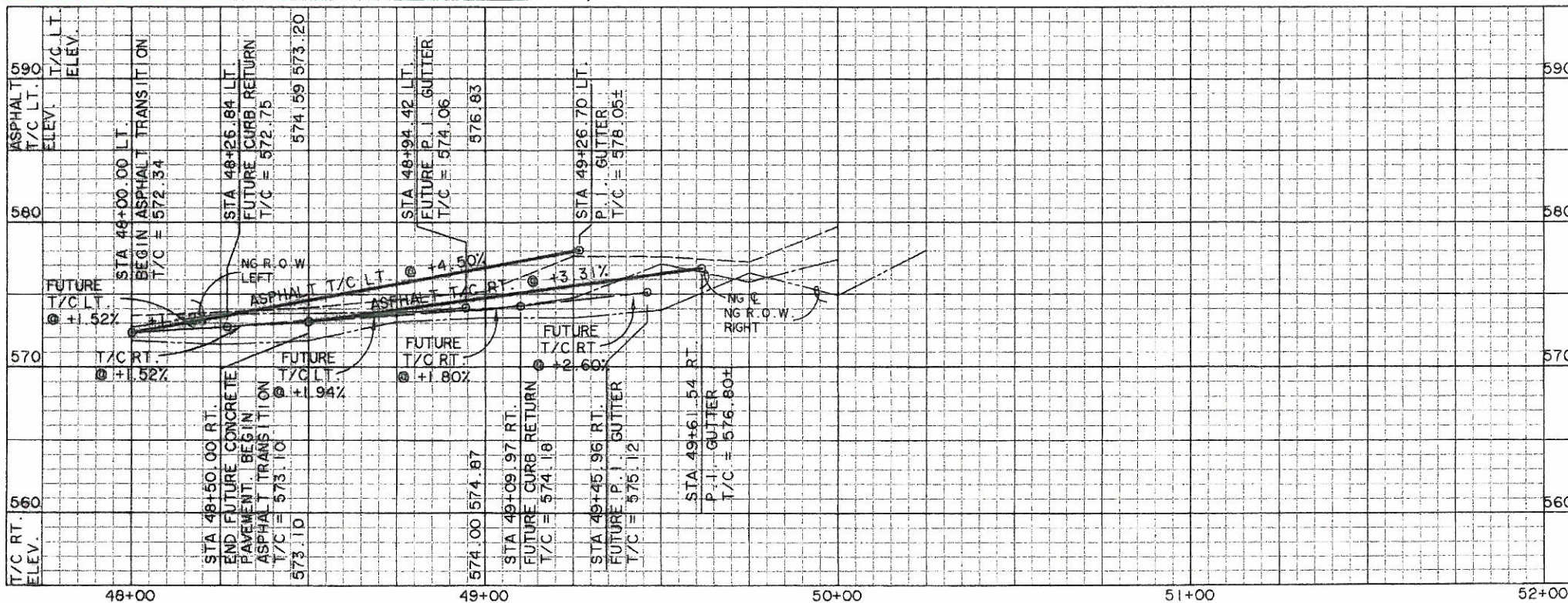
THE CAMBRIDGE COMPANIES, INC. TRUSTEE  
VOL. 101, PG. 795  
D.R.R.C.T.

MATCH LINE STA 48+00

THE CAMBRIDGE COMPANIES, INC. TRUSTEE  
VOL. 101, PG. 795  
D.R.R.C.T.

CURVE TABLE

NO.	RADIUS	DELTA	ARC TANGENT	CHORD BEARING
124	14.25	90°00'00"	22.38	14.25 20.15 N 44°39'42"E
125	14.25	90°00'00"	22.38	14.25 20.15 S 45°20'18"E
138	50.00	72°30'20"	63.27	59.13 N 35°54'52"E

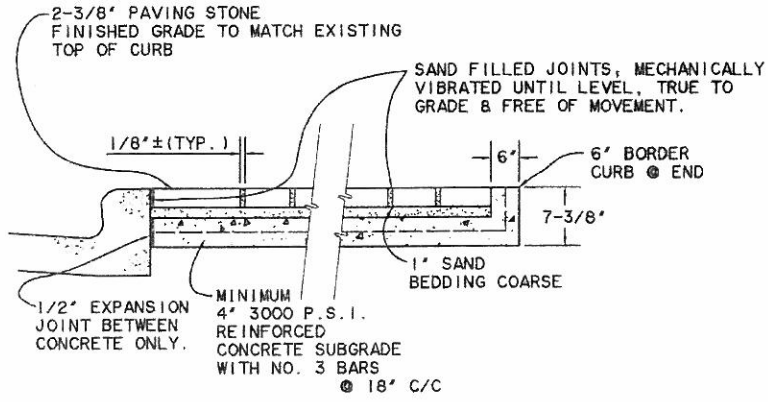
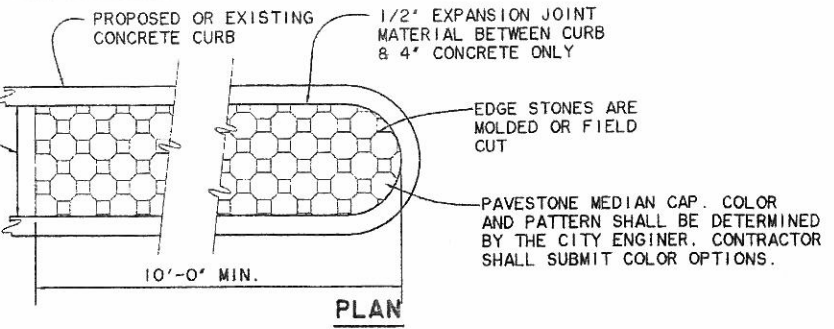


REFER TO SHEET P203 FOR TEMPORARY ASPHALT GRADING

INTERSTATE 30

S. H. 205 BYPASS

REFER TO SHEET P201 FOR TEMPORARY ASPHALT GRADING



TYPICAL CROSS SECTION

MEDIAN PAVING STONE DETAIL

N.T.S.

RECORD PLANS  
AUGUST 29, 2008

**CAUTION !!**  
EXISTING UTILITIES ARE INDICATED ON THE PLANS FROM AVAILABLE INFORMATION. IT SHALL BE THE RESPONSIBILITY OF THE CONTRACTOR TO VERIFY THE LOCATION OF ALL UTILITIES. TO NOTIFY ALL UTILITY COMPANIES OF THE CONTRACTORS OPERATIONS, TO PROTECT ALL UTILITIES FROM DAMAGE, TO REPAIR ALL UTILITIES DAMAGED DUE TO THE CONTRACTORS OPERATIONS, AND TO NOTIFY THE ENGINEER PROMPTLY OF ALL CONFLICTS OF THE WORK WITH EXISTING UTILITIES.

**\*BENCHMARKS\***  
1. BOX CUT WITH 'X' CUT IN CENTER OF EXISTING SIDEWALK 2' SOUTH OF NORTH EDGE AT SOUTHEAST CORNER OF S.H. No. 205 BYPASS AND S.H. No. 276  
ELEV. 580.40  
2. BOX CUT ON SOUTHEAST TOP OF HEADWALL ON SOUTH SIDE OF I.H. No. 30 ACCESS ROAD APPROX. 325' EAST OF FUTURE S.H. No. 205 BYPASS AND ON WEST SIDE OF NESBIT METAL CO. ORANGE METAL BLDG.  
ELEV. 573.70

PREPARED BY:  
**VIA WIER & ASSOCIATES, INC.**  
ENGINEERS SURVEYORS LAND PLANNERS  
4300 BELTWAY PLACE SUITE 130 ARLINGTON, TEXAS 76016 METRO (817)467-7700  
1300 U.S. HIGHWAY 287 N. SUITE 101 MARSHFIELD, TEXAS 76663 METRO (817)477-8700  
6848 ELM STREET FRISCO, TEXAS 75034 METRO (214)387-8000  
www.viawier.com



PHASE II S.H. 205 BYPASS  
FROM S.H. 276 TO INTERSTATE 30  
PAVING  
PLAN & PROFILE  
STA 48+00 TO END



COPYRIGHT ©  
VIA WIER & ASSOCIATES, INC.  
LAST SHEET EDIT  
DATE: 08-29-08  
WAH: 0381  
SHEET NO.  
P107