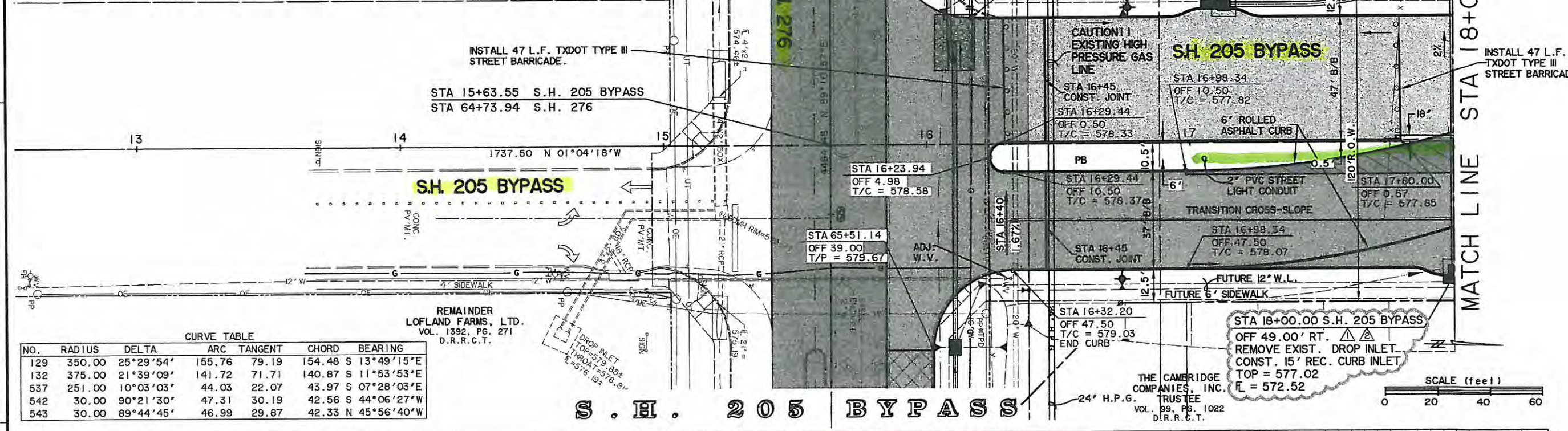


9-07-07	CORRECTED LABELS & ELEVATIONS	JRA	
10-31-07	REDESIGNED S.H. 276 CONNECTION & CHANGED S.H. 205 BYPASS TO CITY SECTION	JRA	
NO.	DATE	DESCRIPTION	BY

CAUTION !!
 EXISTING UTILITIES ARE INDICATED ON THE PLANS FROM AVAILABLE INFORMATION. IT SHALL BE THE RESPONSIBILITY OF THE CONTRACTOR TO VERIFY THE LOCATION OF ALL UTILITIES, TO NOTIFY ALL UTILITY COMPANIES OF THE CONTRACTORS OPERATIONS, TO PROTECT ALL UTILITIES FROM DAMAGE, TO REPAIR ALL UTILITIES DAMAGED DUE TO THE CONTRACTORS OPERATIONS, AND TO NOTIFY THE ENGINEER PROMPTLY OF ALL CONFLICTS OF THE WORK WITH EXISTING UTILITIES.

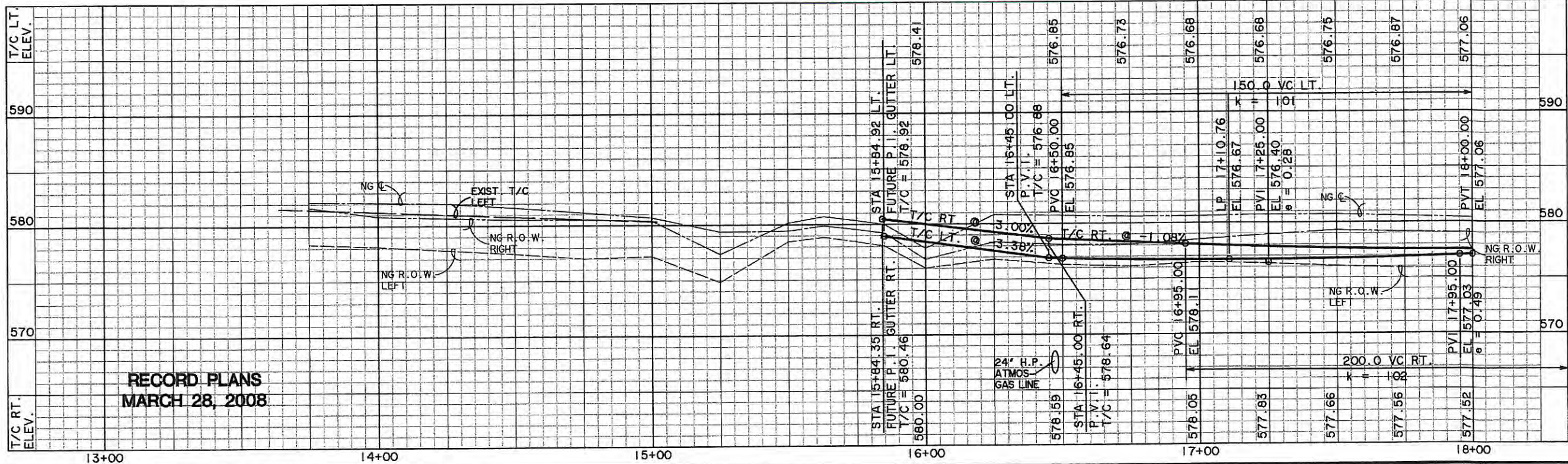
ROCKWALL BYPASS, LTD.
 VOL. 2852, PG. 109
 D.R.R.C.T.

BENCHMARKS
 1. BOX CUT WITH 'X' CUT IN CENTER OF EXISTING SIDEWALK 2' SOUTH OF NORTH EDGE AT SOUTHEAST CORNER OF S.H. No. 205 BYPASS AND S.H. No. 276
 ELEV. 580.40
 2. BOX CUT ON SOUTHEAST TOP OF HEADWALL ON SOUTH SIDE OF I.H. No. 30 ACCESS ROAD APPROX. 325' EAST OF FUTURE S.H. No. 205 BYPASS AND ON WEST SIDE OF NESBIT METAL CO. ORANGE METAL BLDG.
 ELEV. 573.70



CURVE TABLE

NO.	RADIUS	DELTA	ARC TANGENT	CHORD	BEARING
129	350.00	25°29'54"	155.76	79.19	154.48 S 13°49'15"E
132	375.00	21°39'09"	141.72	71.71	140.87 S 11°53'53"E
537	251.00	10°03'03"	44.03	22.07	43.97 S 07°28'03"E
542	30.00	90°21'30"	47.31	30.19	42.56 S 44°06'27"W
543	30.00	89°44'45"	46.99	29.87	42.33 N 45°56'40"W

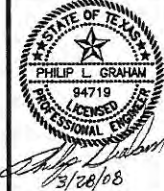


RECORD PLANS
 MARCH 28, 2008

PREPARED BY:
WIER & ASSOCIATES, INC.
 ENGINEERS SURVEYORS LAND PLANNERS
 4300 BELTWAY PLACE SUITE 130 ARLINGTON, TEXAS 76010 METRO (817)467-7700
 1300 U.S. HIGHWAY 287 N. SUITE 101 WANSFORD, TEXAS 76093 METRO (817)477-6700
 6848 ELM STREET FISCO, TEXAS 76844 METRO (214)307-8000
 www.wierassociates.com



PHASE I S.H. 205 BYPASS
 FROM S.H. 276 TO INTERSTATE 30
 PAVING
 PLAN & PROFILE
 STA 13+00+ TO 18+00



COPYRIGHT ©
 WIER & ASSOCIATES, INC.
 LAST SHEET EDIT
 DATE: 03-28-2008
 WA# 04141
 SHEET NO.
 P101

TIME 6:34 FILE: 04141-PAVE1.dwg

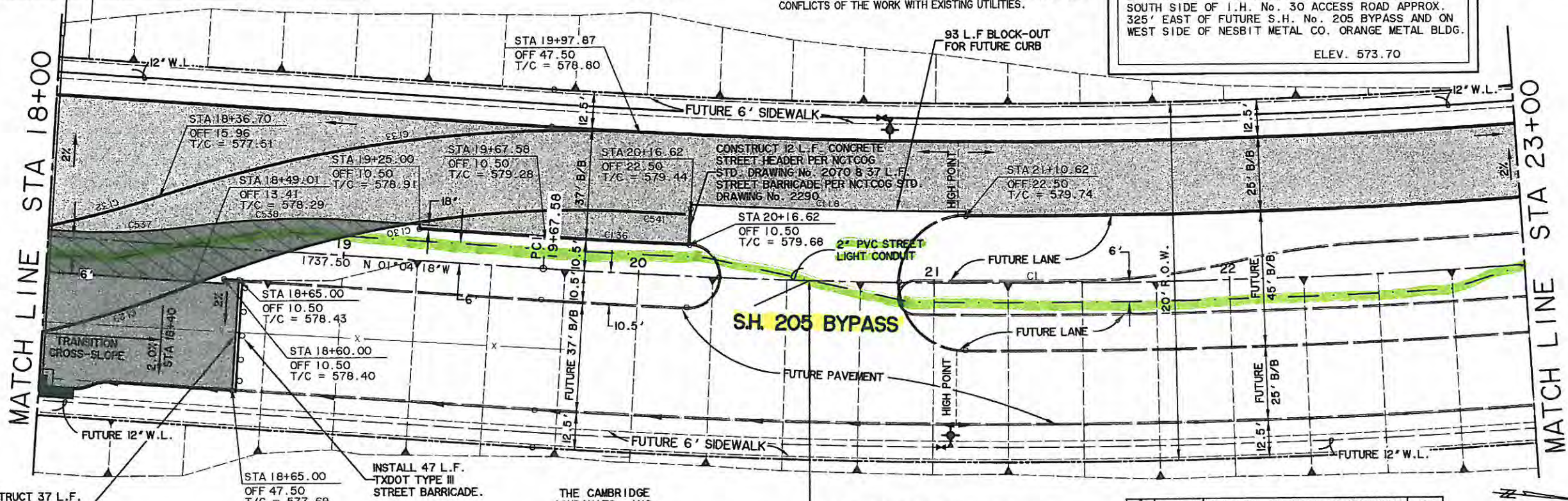
NO.	RADIUS	DELTA	ARC TANGENT	CHORD	BEARING
118	2476.00	02°09'16"	93.10	46.55	93.09 S 03°16'22"E
130	350.00	24°50'55"	151.79	77.11	150.60 N 14°08'45"W
133	450.00	20°57'30"	164.61	83.23	163.69 N 12°14'42"W
136	2489.50	01°07'26"	48.83	24.42	48.83 S 01°38'01"E
537	215.00	12°01'47"	45.14	22.65	45.06 N 06°29'16"W
538	285.00	11°25'46"	56.85	28.52	56.76 S 06°47'17"E
541	2479.50	00°25'40"	18.51	9.25	18.51 S 01°56'08"E

THE CAMBRIDGE COMPANIES, INC. TRUSTEE
VOL. 99, PG. 1022
D.R.R.C.T.

CAUTION !!
EXISTING UTILITIES ARE INDICATED ON THE PLANS FROM AVAILABLE INFORMATION. IT SHALL BE THE RESPONSIBILITY OF THE CONTRACTOR TO VERIFY THE LOCATION OF ALL UTILITIES, TO NOTIFY ALL UTILITY COMPANIES OF THE CONTRACTORS OPERATIONS, TO PROTECT ALL UTILITIES FROM DAMAGE, TO REPAIR ALL UTILITIES DAMAGED DUE TO THE CONTRACTORS OPERATIONS, AND TO NOTIFY THE ENGINEER PROMPTLY OF ALL CONFLICTS OF THE WORK WITH EXISTING UTILITIES.

BENCHMARK
1. BOX CUT WITH 'X' CUT IN CENTER OF EXISTING SIDEWALK 2' SOUTH OF NORTH EDGE AT SOUTHEAST CORNER OF S.H. No. 205 BYPASS AND S.H. No. 276
ELEV. 580.40
2. BOX CUT ON SOUTHEAST TOP OF HEADWALL ON SOUTH SIDE OF I.H. No. 30 ACCESS ROAD APPROX. 325' EAST OF FUTURE S.H. No. 205 BYPASS AND ON WEST SIDE OF NESBIT METAL CO. ORANGE METAL BLDG.
ELEV. 573.70

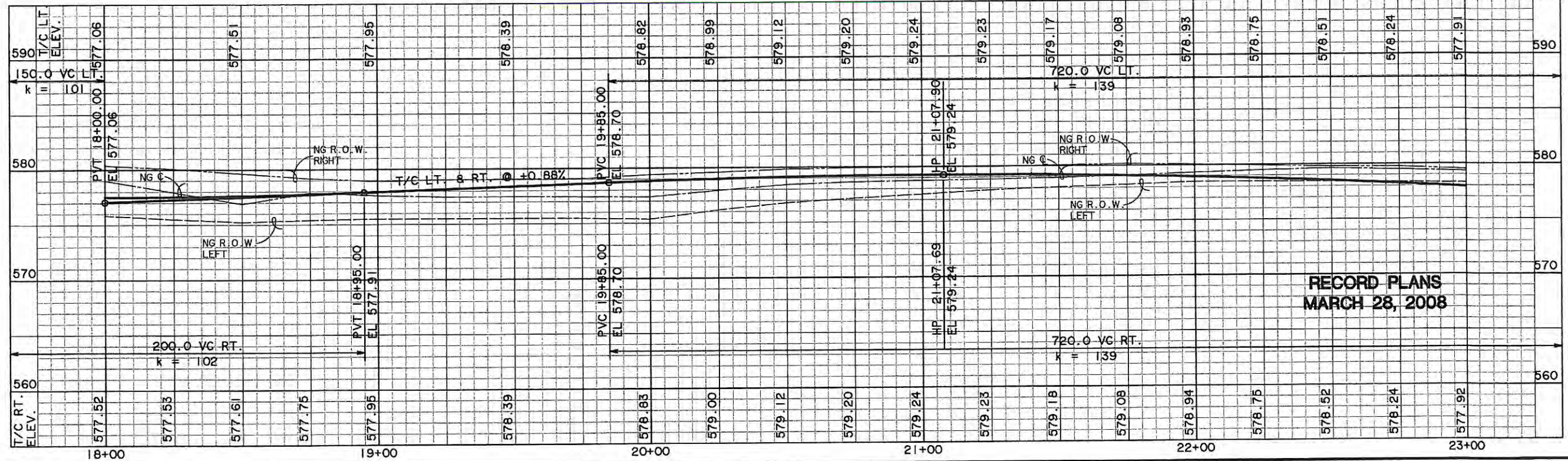
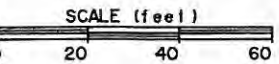
CURVE C1	
A	19°35'45"
B	02°17'31"
	2500.00
	431.73
	855.03
	37.00



S . H . 205 BYPASS

STA 20+57.62 S.H. No. 205 BYPASS
CENTER OF FUTURE 60' WIDE MEDIAN OPENING

NO.	DATE	DESCRIPTION	BY
10-31-07		CHANGED S.H. 205 BYPASS TO CITY SECTION	JRA

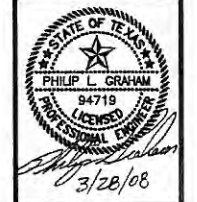


**RECORD PLANS
MARCH 28, 2008**

PREPARED BY:
WIA WIER & ASSOCIATES, INC.
ENGINEERS SURVEYORS LAND PLANNERS
4300 BELTWAY PLACE SUITE 130 ARLINGTON, TEXAS 76018 METRO (817)467-7700
1300 U.S. HIGHWAY 287 N. SUITE 101 MARSEFIELD, TEXAS 76663 METRO (817)467-4700
6849 ELM STREET (PROCO), TEXAS 76064 METRO (214)387-8000
www.wierassociates.com



PHASE I S.H. 205 BYPASS
FROM S.H. 276 TO INTERSTATE 30
PAVING
PLAN & PROFILE
STA 18+00 TO 23+00



COPYRIGHT ©
WIER & ASSOCIATES, INC.
LAST SHEET EDIT
DATE 03-28-2008
WA# 04141
**SHEET NO.
P102**

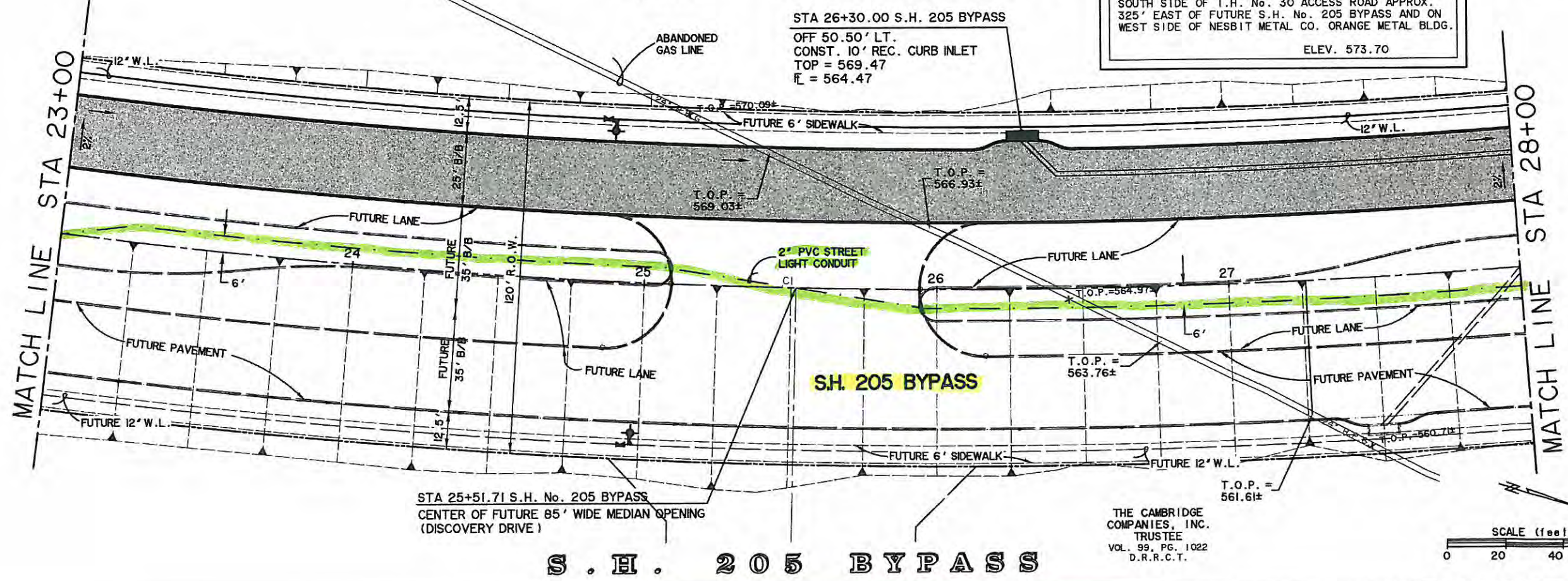
10-31-07	CHANGED S.H. 205 BYPASS TO CITY SECTION	JRA	
NO.	DATE	DESCRIPTION	BY

THE CAMBRIDGE COMPANIES, INC. TRUSTEE
VOL. 99, PG. 1022
D.R.R.C.T.

CAUTION !!
EXISTING UTILITIES ARE INDICATED ON THE PLANS FROM AVAILABLE INFORMATION. IT SHALL BE THE RESPONSIBILITY OF THE CONTRACTOR TO VERIFY THE LOCATION OF ALL UTILITIES, TO NOTIFY ALL UTILITY COMPANIES OF THE CONTRACTOR'S OPERATIONS, TO PROTECT ALL UTILITIES FROM DAMAGE, TO REPAIR ALL UTILITIES DAMAGED DUE TO THE CONTRACTOR'S OPERATIONS, AND TO NOTIFY THE ENGINEER PROMPTLY OF ALL CONFLICTS OF THE WORK WITH EXISTING UTILITIES.

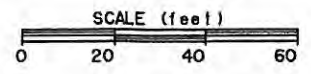
BENCHMARK
1. BOX CUT WITH 'X' CUT IN CENTER OF EXISTING SIDEWALK 2' SOUTH OF NORTH EDGE AT SOUTHEAST CORNER OF S.H. No. 205 BYPASS AND S.H. No. 276
ELEV. 580.40
2. BOX CUT ON SOUTHEAST TOP OF HEADWALL ON SOUTH SIDE OF I.H. No. 30 ACCESS ROAD APPROX. 325' EAST OF FUTURE S.H. No. 205 BYPASS AND ON WEST SIDE OF NESBIT METAL CO. ORANGE METAL BLDG.
ELEV. 573.70

CURVE CI	
A	19°35'45"
D	02°17'31"
R	2500.00'
T	431.73'
E	855.03'
	37.00'

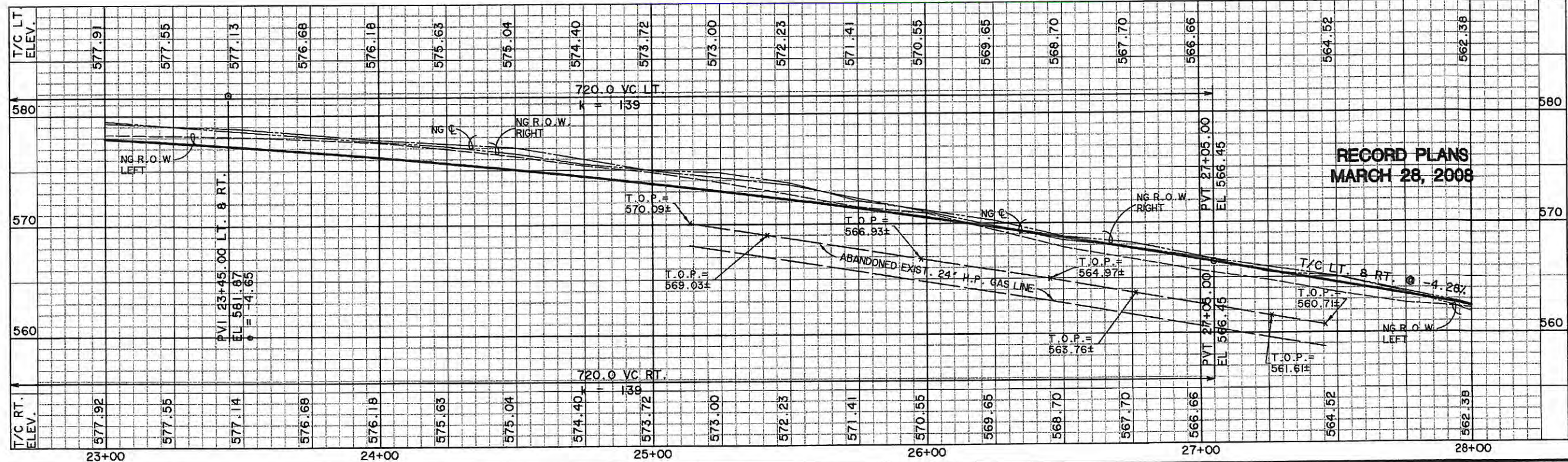


STA 25+51.71 S.H. No. 205 BYPASS
CENTER OF FUTURE 85' WIDE MEDIAN OPENING
(DISCOVERY DRIVE)

THE CAMBRIDGE COMPANIES, INC. TRUSTEE
VOL. 99, PG. 1022
D.R.R.C.T.



S . H . 2 0 5 B Y P A S S

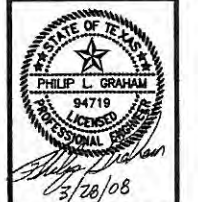


RECORD PLANS
MARCH 28, 2008

PREPARED BY:
VIA WIER & ASSOCIATES, INC.
ENGINEERS SURVEYORS LAND PLANNERS
4300 BELWAY PLACE SUITE 130 ARLINGTON, TEXAS 76010 METRO (817)467-7700
1300 U.S. HIGHWAY 287 N. SUITE 101 WINSFELD, TEXAS 76066 METRO (817)477-6700
6848 ELM STREET FRODO, TEXAS 75054 METRO (214)307-8000
www.viawier.com



PHASE I S.H. 205 BYPASS
FROM S.H. 276 TO INTERSTATE 30
PAVING
PLAN & PROFILE
STA 23+00 TO 28+00



COPYRIGHT ©
WIER & ASSOCIATES, INC.
LAST SHEET EDIT
DATE 03-28-2008
WAW:OJMI
SHEET NO.
P103

TIME 6:37 FILE: 04141-PAVE3.dwg

10-31-07	CHANGED S.H. 205 BYPASS TO CITY SECTION	JRA	
NO.	DATE	DESCRIPTION	BY

BENCHMARKS

1. BOX CUT WITH 'X' CUT IN CENTER OF EXISTING SIDEWALK 2' SOUTH OF NORTH EDGE AT SOUTHEAST CORNER OF S.H. No. 205 BYPASS AND S.H. No. 276
ELEV. 580.40

2. BOX CUT ON SOUTHEAST TOP OF HEADWALL ON SOUTH SIDE OF I.H. No. 30 ACCESS ROAD APPROX. 325' EAST OF FUTURE S.H. No. 205 BYPASS AND ON WEST SIDE OF NESBIT METAL CO. ORANGE METAL BLDG.
ELEV. 573.70

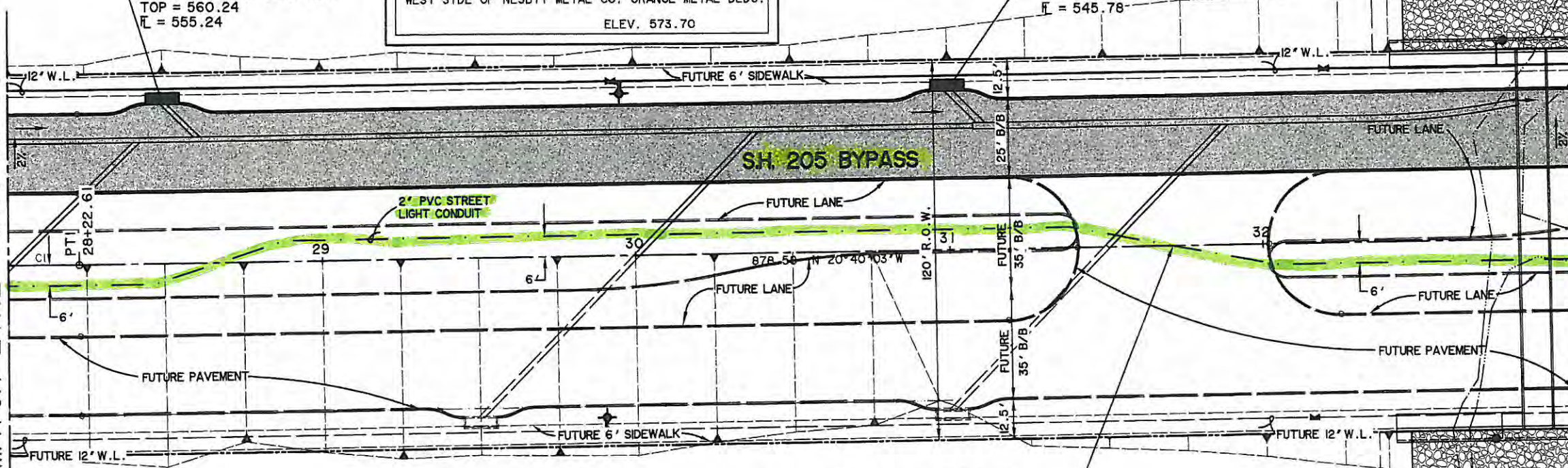
THE CAMBRIDGE COMPANIES, INC.
TRUSTEE
VOL. 99, PG. 1022
D.R.R.C.T.

STA 31+00 S.H. 205 BYPASS
OFF 50.50' LT.
CONST. 10' REC. CURB INLET
TOP = 550.78
F = 545.78

STA 28+50.00 S.H. 205 BYPASS
OFF 50.50' LT.
CONST. 10' REC. CURB INLET
TOP = 560.24
F = 555.24

MATCH LINE STA 28+00

MATCH LINE STA 33+00



STA 32+71.42 S.H. No. 205 BYPASS
CENTER OF FUTURE 60' WIDE MEDIAN OPENING

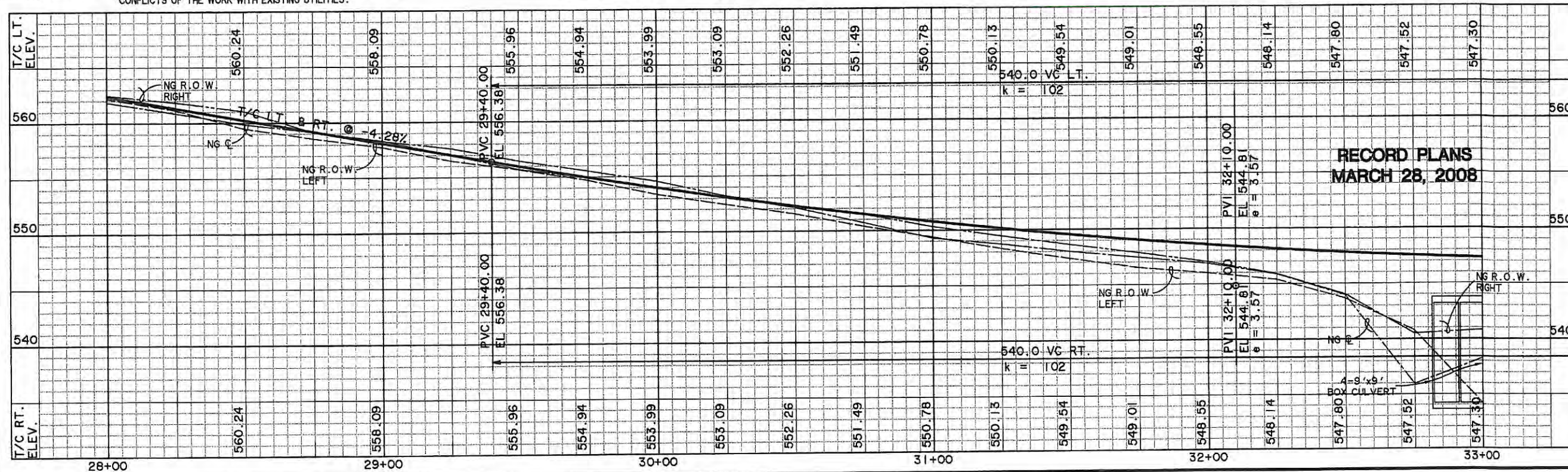
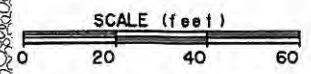
THE CAMBRIDGE COMPANIES, INC.
TRUSTEE
VOL. 99, PG. 1022
D.R.R.C.T.

S . H . 2 0 5 B Y P A S S

CURVE C1

A	19°35'45"
D	02°17'31"
R	2500.00
L	431.73
T	855.03
E	37.00

CAUTION 11
EXISTING UTILITIES ARE INDICATED ON THE PLANS FROM AVAILABLE INFORMATION. IT SHALL BE THE RESPONSIBILITY OF THE CONTRACTOR TO VERIFY THE LOCATION OF ALL UTILITIES, TO NOTIFY ALL UTILITY COMPANIES OF THE CONTRACTORS OPERATIONS, TO PROTECT ALL UTILITIES FROM DAMAGE, TO REPAIR ALL UTILITIES DAMAGED DUE TO THE CONTRACTORS OPERATIONS, AND TO NOTIFY THE ENGINEER PROMPTLY OF ALL CONFLICTS OF THE WORK WITH EXISTING UTILITIES.

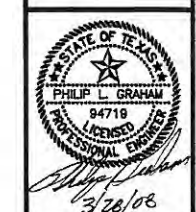


RECORD PLANS
MARCH 28, 2008

PREPARED BY:
VIA WIER & ASSOCIATES, INC.
ENGINEERS SURVEYORS LAND PLANNERS
4300 BELTWAY PLACE SUITE 130 ARLINGTON, TEXAS 76018 METRO (817)467-7700
1300 BELTWAY 207 N. SUITE 101 AMARILLO, TEXAS 79103 METRO (817)477-8700
6948 ELM STREET FRODO, TEXAS 75044 METRO (214)307-8000
www.viawier.com

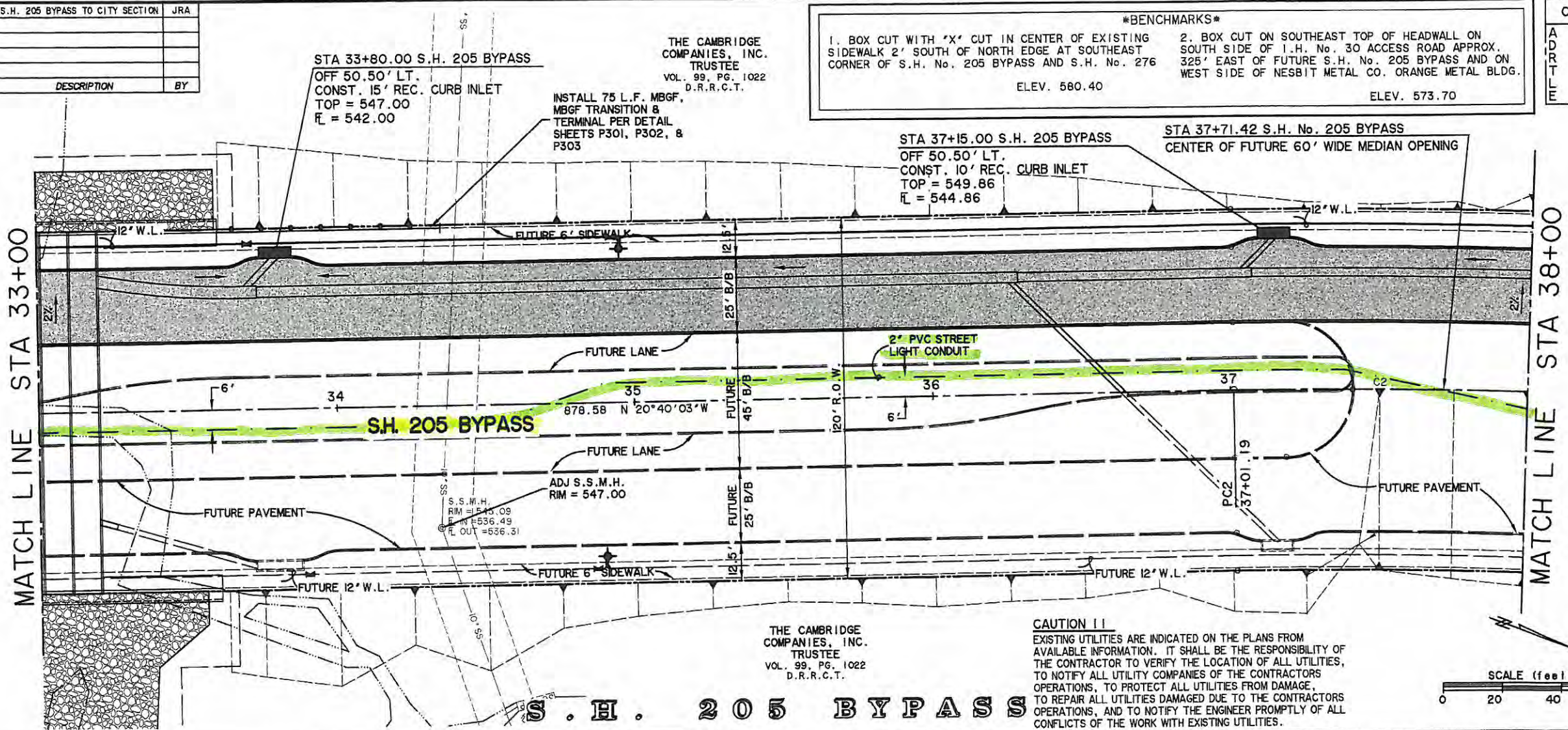


PHASE I S.H. 205 BYPASS
FROM S.H. 276 TO INTERSTATE 30
PAVING
PLAN & PROFILE
STA 28+00 TO 33+00



COPYRIGHT ©
WIER & ASSOCIATES, INC.
LAST SHEET EDIT
DATE 03-28-2008
WAR 04141
SHEET NO. P104

10-31-07	CHANGED S.H. 205 BYPASS TO CITY SECTION	JRA	
NO.	DATE	DESCRIPTION	BY



BENCHMARKS

1. BOX CUT WITH 'X' CUT IN CENTER OF EXISTING SIDEWALK 2' SOUTH OF NORTH EDGE AT SOUTHEAST CORNER OF S.H. No. 205 BYPASS AND S.H. No. 276
ELEV. 580.40

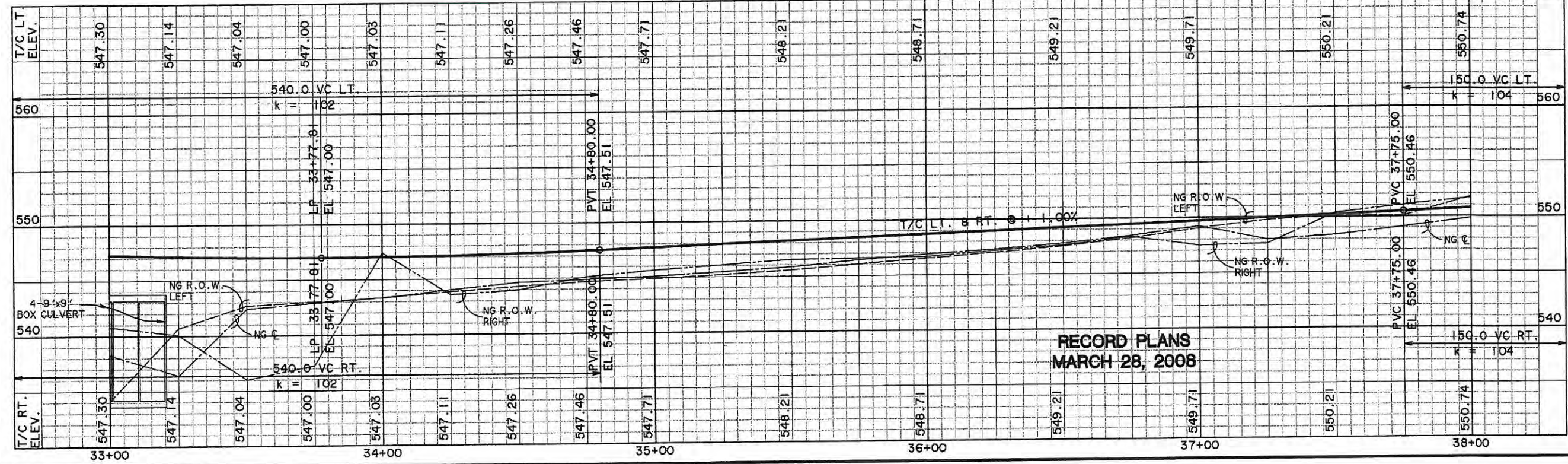
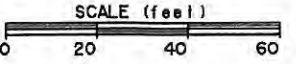
2. BOX CUT ON SOUTHEAST TOP OF HEADWALL ON SOUTH SIDE OF I.H. No. 30 ACCESS ROAD APPROX. 325' EAST OF FUTURE S.H. No. 205 BYPASS AND ON WEST SIDE OF NESBIT METAL CO. ORANGE METAL BLDG.
ELEV. 573.70

CURVE C2

A	20°19'45"
D	02°56'18"
R	1950.00
T	349.62
L	691.88
E	31.09

THE CAMBRIDGE COMPANIES, INC. TRUSTEE
VOL. 99, PG. 1022
D.R.R.C.T.

CAUTION !!
EXISTING UTILITIES ARE INDICATED ON THE PLANS FROM AVAILABLE INFORMATION. IT SHALL BE THE RESPONSIBILITY OF THE CONTRACTOR TO VERIFY THE LOCATION OF ALL UTILITIES, TO NOTIFY ALL UTILITY COMPANIES OF THE CONTRACTORS OPERATIONS, TO PROTECT ALL UTILITIES FROM DAMAGE, TO REPAIR ALL UTILITIES DAMAGED DUE TO THE CONTRACTORS OPERATIONS, AND TO NOTIFY THE ENGINEER PROMPTLY OF ALL CONFLICTS OF THE WORK WITH EXISTING UTILITIES.

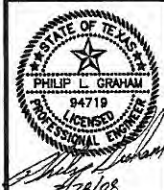


RECORD PLANS
MARCH 28, 2008

PREPARED BY:
VIA WIER & ASSOCIATES, INC.
ENGINEERS SURVEYORS LAND PLANNERS
4300 BELTWAY PLACE SUITE 130 ARLINGTON, TEXAS 76010 METRO (817)467-7700
1300 U.S. HIGHWAY 287 N. SUITE 101 WARGRENDA, TEXAS 76095 METRO (817)477-6700
8949 ELM STREET FRODO, TEXAS 75044 METRO (214)387-4000
www.viawier.com



PHASE I S.H. 205 BYPASS
FROM S.H. 276 TO INTERSTATE 30
PAVING
PLAN & PROFILE
STA 33+00 TO 38+00



COPYRIGHT ©
WIER & ASSOCIATES, INC.
LAST SHEET EDIT
DATE 03-28-2008
NA# 04181
SHEET NO. P105

TIME 16:38 FILE:04141-PAVES.dwg

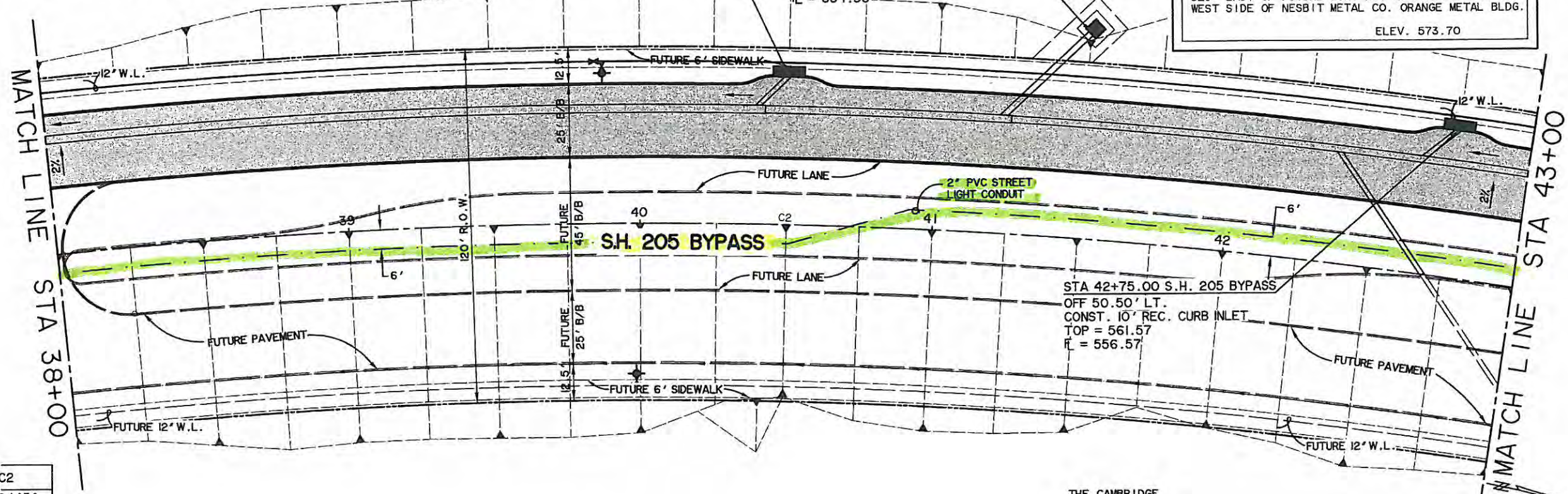
CAUTION !!
 EXISTING UTILITIES ARE INDICATED ON THE PLANS FROM AVAILABLE INFORMATION. IT SHALL BE THE RESPONSIBILITY OF THE CONTRACTOR TO VERIFY THE LOCATION OF ALL UTILITIES, TO NOTIFY ALL UTILITY COMPANIES OF THE CONTRACTOR'S OPERATIONS, TO PROTECT ALL UTILITIES FROM DAMAGE, TO REPAIR ALL UTILITIES DAMAGED DUE TO THE CONTRACTOR'S OPERATIONS, AND TO NOTIFY THE ENGINEER PROMPTLY OF ALL CONFLICTS OF THE WORK WITH EXISTING UTILITIES.

THE CAMBRIDGE COMPANIES, INC. TRUSTEE
 VOL. 99, PG. 1022
 D.R.R.C.T.

STA 40+50.00 S.H. 205 BYPASS
 OFF 50.50' LT.
 CONST. 10' REC. CURB INLET
 TOP = 556.09
 RL = 551.09

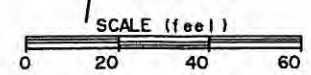
STA 41+51.32 S.H. 205 BYPASS
 OFF 71.46' LT.
 4'x4' DROP INLET
 TOP = 560.43
 THROAT = 559.43
 RL = 554.93

BENCHMARKS
 1. BOX CUT WITH 'X' CUT IN CENTER OF EXISTING SIDEWALK 2' SOUTH OF NORTH EDGE AT SOUTHEAST CORNER OF S.H. No. 205 BYPASS AND S.H. No. 276
 ELEV. 580.40
 2. BOX CUT ON SOUTHEAST TOP OF HEADWALL ON SOUTH SIDE OF I.H. No. 30 ACCESS ROAD APPROX. 325' EAST OF FUTURE S.H. No. 205 BYPASS AND ON WEST SIDE OF NESBIT METAL CO. ORANGE METAL BLDG.
 ELEV. 573.70

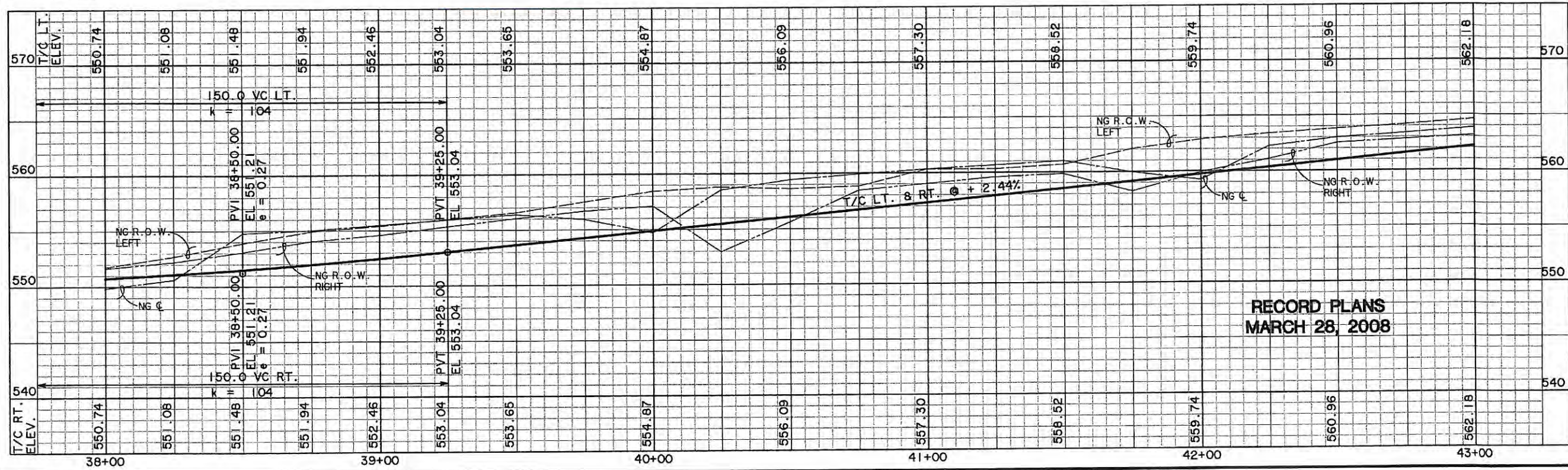


CURVE C2	
A	20° 19' 45"
D	02° 56' 18"
R	1950.00
T	349.62
E	691.88
E	31.09

THE CAMBRIDGE COMPANIES, INC. TRUSTEE
 VOL. 99, PG. 1022
 D.R.R.C.T.



S.H. 205 BYPASS

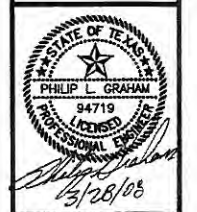


**RECORD PLANS
 MARCH 28, 2008**

PREPARED BY:
WMA WIER & ASSOCIATES, INC.
 ENGINEERS SURVEYORS LAND PLANNERS
 4300 BELWAY PLACE SUITE 130 ARLINGTON, TEXAS 76010 METRO (817)467-7700
 1300 U.S. HIGHWAY 207 N. SUITE 101 WAXFORD, TEXAS 76083 METRO (817)467-4700
 6849 ELM STREET FRODO, TEXAS 76044 METRO (214)397-8000
 www.wma-wier.com



**PHASE I S.H. 205 BYPASS
 FROM S.H. 276 TO INTERSTATE 30
 PAVING
 PLAN & PROFILE
 STA 38+00 TO 43+00**



COPYRIGHT ©
 WIER & ASSOCIATES, INC.
 LAST SHEET EDIT
 DATE 03-28-2008
 WA# 04141
**SHEET NO.
 P106**

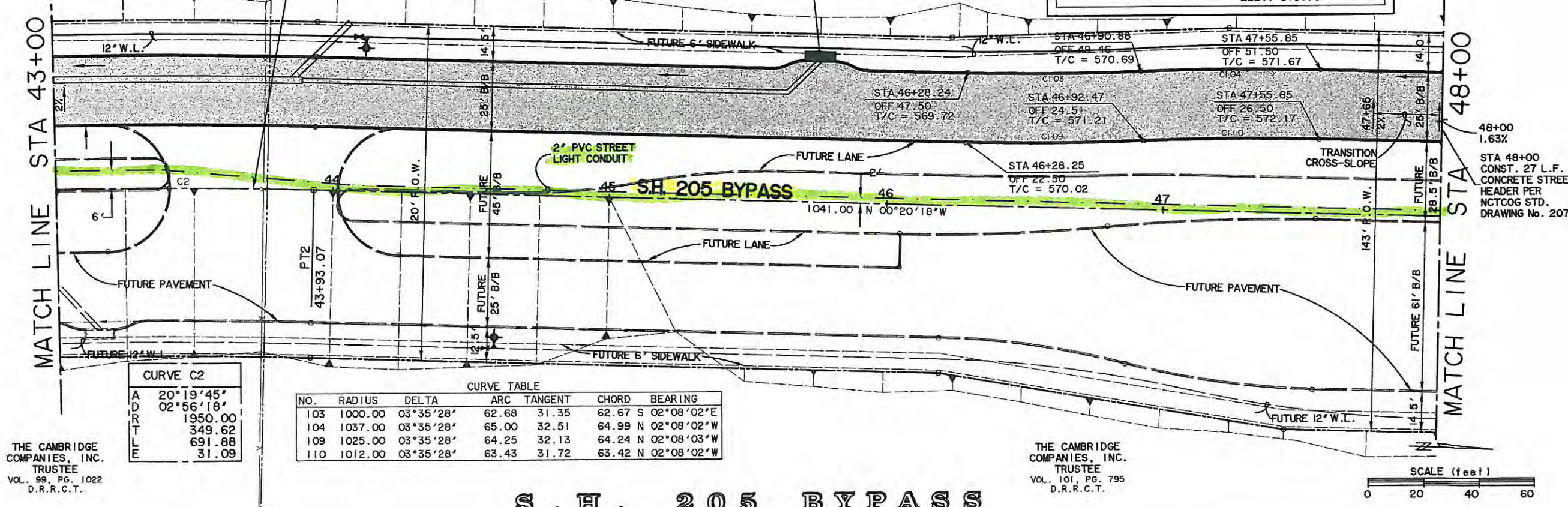
THE CAMBRIDGE COMPANIES, INC. TRUSTEE
VOL. 99, PG. 1022
D.R.R.C.T.

STA 43+71.42 S.H. No. 205 BYPASS
CENTER OF FUTURE 60' WIDE MEDIAN OPENING

STA 45+75.00 S.H. 205 BYPASS
OFF 50.50' LT.
CONST. 10' REC. CURB INLET
TOP = 568.75
E = 563.75

THE CAMBRIDGE COMPANIES, INC. TRUSTEE
VOL. 101, PG. 795
D.R.R.C.T.

BENCHMARK
1. BOX CUT WITH 'X' CUT IN CENTER OF EXISTING SIDEWALK 2' SOUTH OF NORTH EDGE AT SOUTHEAST CORNER OF S.H. No. 205 BYPASS AND S.H. No. 276
ELEV. 580.40
2. BOX CUT ON SOUTHEAST TOP OF HEADWALL ON SOUTH SIDE OF I.H. No. 30 ACCESS ROAD APPROX. 325' EAST OF FUTURE S.H. No. 205 BYPASS AND ON WEST SIDE OF NESBIT METAL CO. ORANGE METAL BLDG.
ELEV. 573.70



CURVE C2

A	20°19'45"
D	02°56'18"
R	1950.00
T	349.62
E	691.88
	31.09

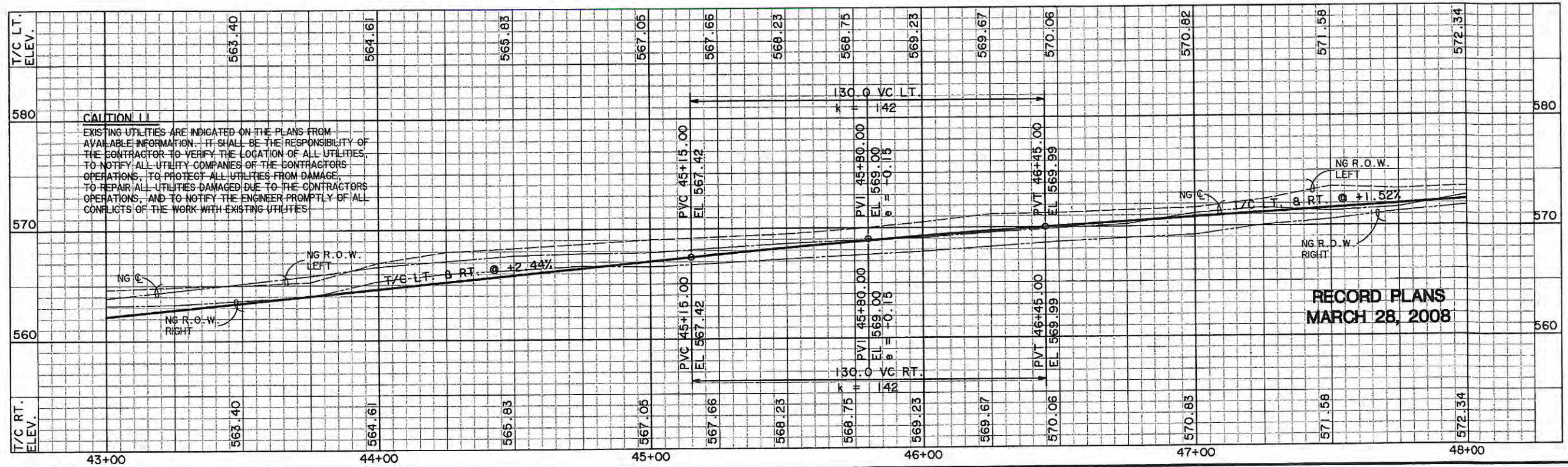
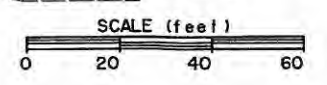
CURVE TABLE

NO.	RADIUS	DELTA	ARC	TANGENT	CHORD	BEARING
103	1000.00	03°35'28"	62.68	31.35	62.67	S 02°08'02"E
104	1037.00	03°35'28"	65.00	32.51	64.99	N 02°08'02"W
109	1025.00	03°35'28"	64.25	32.13	64.24	N 02°08'03"W
110	1012.00	03°35'28"	63.43	31.72	63.42	N 02°08'02"W

THE CAMBRIDGE COMPANIES, INC. TRUSTEE
VOL. 99, PG. 1022
D.R.R.C.T.

THE CAMBRIDGE COMPANIES, INC. TRUSTEE
VOL. 101, PG. 795
D.R.R.C.T.

S . H . 2 0 5 B Y P A S S



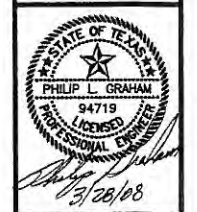
CAUTION !!
EXISTING UTILITIES ARE INDICATED ON THE PLANS FROM AVAILABLE INFORMATION. IT SHALL BE THE RESPONSIBILITY OF THE CONTRACTOR TO VERIFY THE LOCATION OF ALL UTILITIES, TO NOTIFY ALL UTILITY COMPANIES OF THE CONTRACTORS OPERATIONS, TO PROTECT ALL UTILITIES FROM DAMAGE, TO REPAIR ALL UTILITIES DAMAGED DUE TO THE CONTRACTORS OPERATIONS, AND TO NOTIFY THE ENGINEER PROMPTLY OF ALL CONFLICTS OF THE WORK WITH EXISTING UTILITIES

RECORD PLANS
MARCH 28, 2008

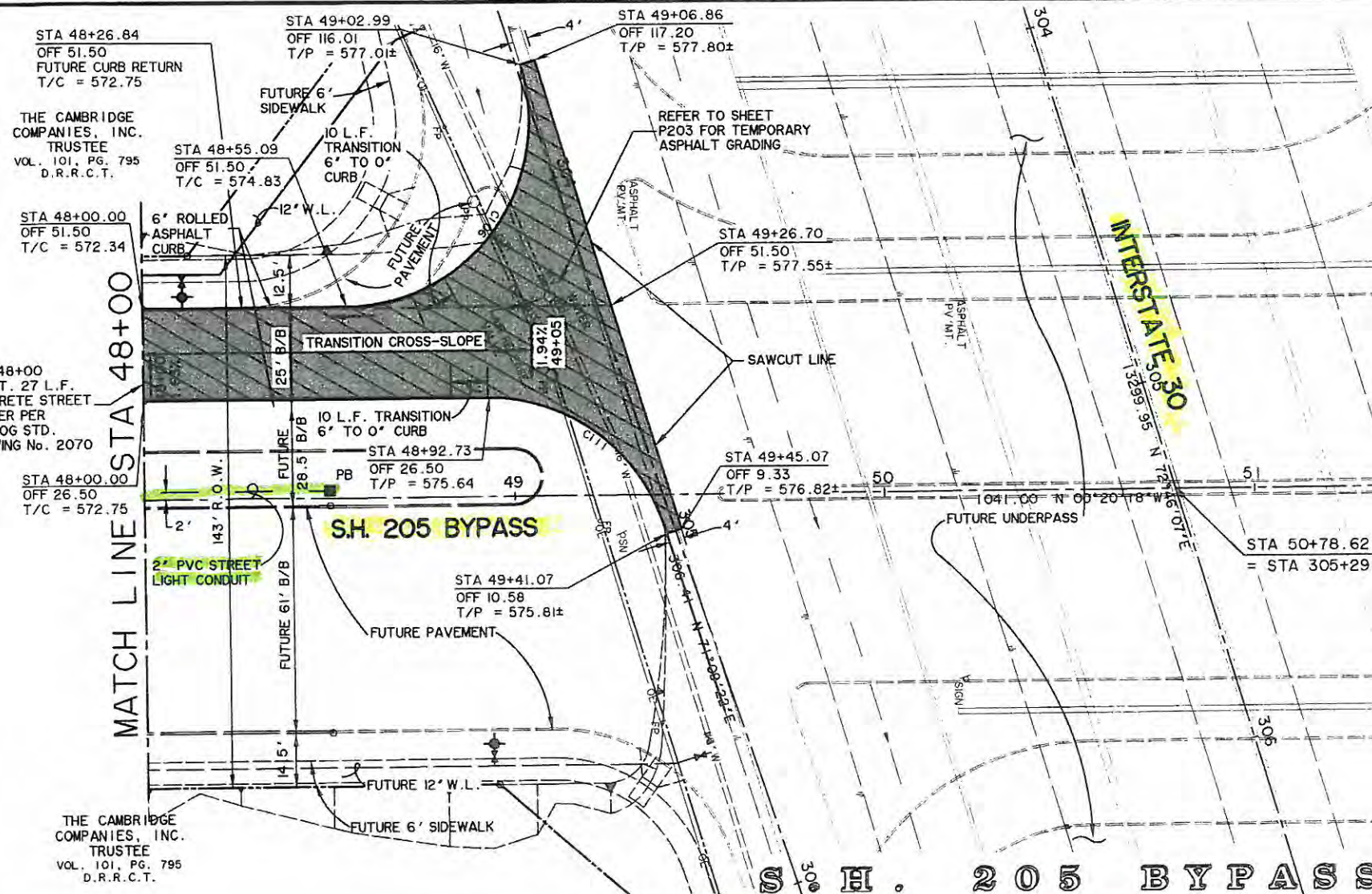
PREPARED BY:
WIA WIER & ASSOCIATES, INC.
ENGINEERS SURVEYORS LAND PLANNERS
4300 BELTWAY PLACE SUITE 130 ARLINGTON, TEXAS 76010 METRO (817)467-7700
1300 U.S. HIGHWAY 207 N. SUITE 101 WANSFORD, TEXAS 76083 METRO (817)477-4700
6609 ELLI STREET FRSICO, TEXAS 75044 METRO (214)387-8000
www.wia-wier.com



PHASE I S.H. 205 BYPASS
FROM S.H. 276 TO INTERSTATE 30
PAVING
PLAN & PROFILE
STA 43+00 TO 48+00



COPYRIGHT © WIER & ASSOCIATES, INC.
LAST SHEET EDIT DATE 03-28-2008
WA# 0414
SHEET NO. P107

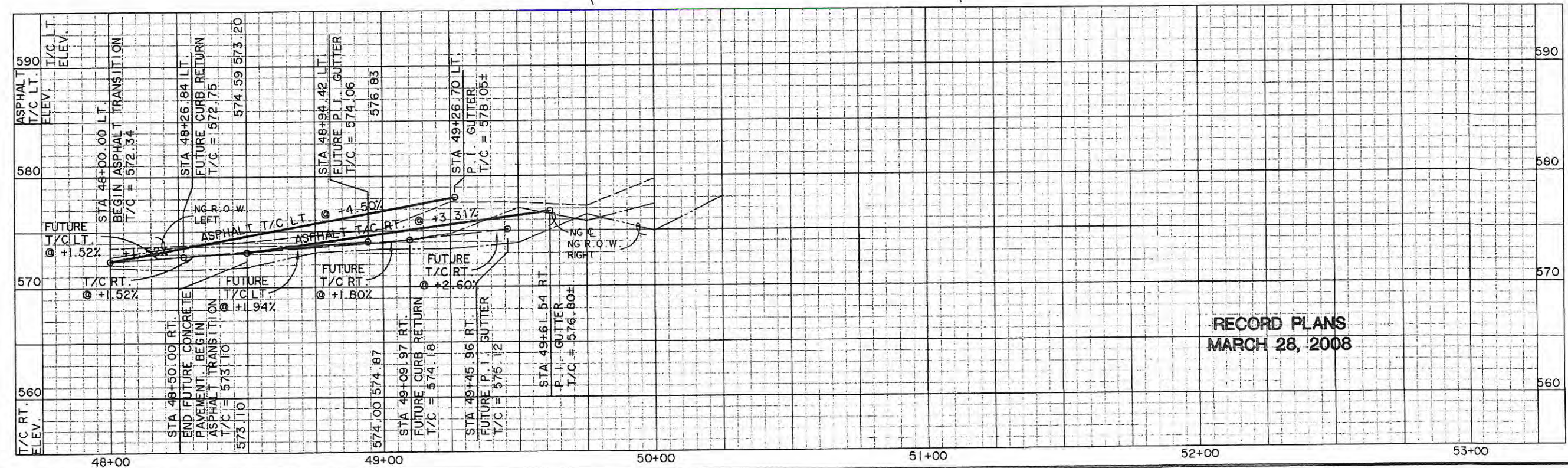
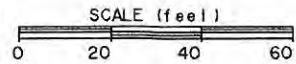


CURVE TABLE					
NO.	RADIUS	DELTA	ARC TANGENT	CHORD	BEARING
106	50.00	106°52'13"	93.26	67.41	80.32 S 53°46'25"E
111	50.00	72°38'37"	63.39	36.76	59.23 N 35°59'00"E

CAUTION !!
 EXISTING UTILITIES ARE INDICATED ON THE PLANS FROM AVAILABLE INFORMATION. IT SHALL BE THE RESPONSIBILITY OF THE CONTRACTOR TO VERIFY THE LOCATION OF ALL UTILITIES, TO NOTIFY ALL UTILITY COMPANIES OF THE CONTRACTORS OPERATIONS, TO PROTECT ALL UTILITIES FROM DAMAGE, TO REPAIR ALL UTILITIES DAMAGED DUE TO THE CONTRACTORS OPERATIONS, AND TO NOTIFY THE ENGINEER PROMPTLY OF ALL CONFLICTS OF THE WORK WITH EXISTING UTILITIES.

BENCHMARKS

- BOX CUT WITH "X" CUT IN CENTER OF EXISTING SIDEWALK 2' SOUTH OF NORTH EDGE AT SOUTHEAST CORNER OF S.H. No. 205 BYPASS AND S.H. No. 276
 ELEV. 580.40
- BOX CUT ON SOUTHEAST TOP OF HEADWALL ON SOUTH SIDE OF I.H. No. 30 ACCESS ROAD APPROX. 325' EAST OF FUTURE S.H. No. 205 BYPASS AND ON WEST SIDE OF NESBIT METAL CO. ORANGE METAL BLDG.
 ELEV. 573.70



RECORD PLANS
MARCH 28, 2008

PREPARED BY:
WIA WIER & ASSOCIATES, INC.
 SURVEYORS LAND PLANNERS
 ENGINEERS
 4300 BELWAY PLACE, SUITE 130, ARLINGTON, TEXAS 76018 METRO (817)467-7700
 1300 U.S. HIGHWAY 281 N., SUITE 107, MANFRED, TEXAS 76063 METRO (817)477-8700
 6849 ELM STREET FRODO, TEXAS 75034 METRO (214)387-8000
 www.wierassociates.com



PHASE I S.H. 205 BYPASS
FROM S.H. 276 TO INTERSTATE 30
PAVING
PLAN & PROFILE
 STA 48+00 TO END



COPYRIGHT ©
 WIER & ASSOCIATES, INC.
 LAST SHEET EDIT
 DATE 03-28-2008
 WA# 0414
SHEET NO.
P108

TIME 6:42 FILE: 04141-PAVEB.dwg