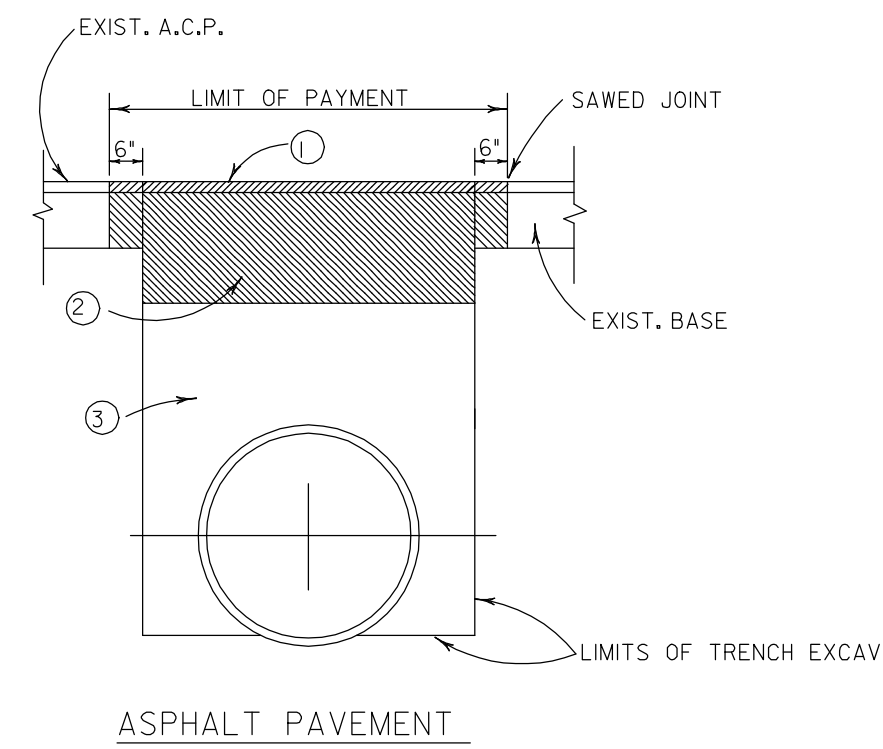
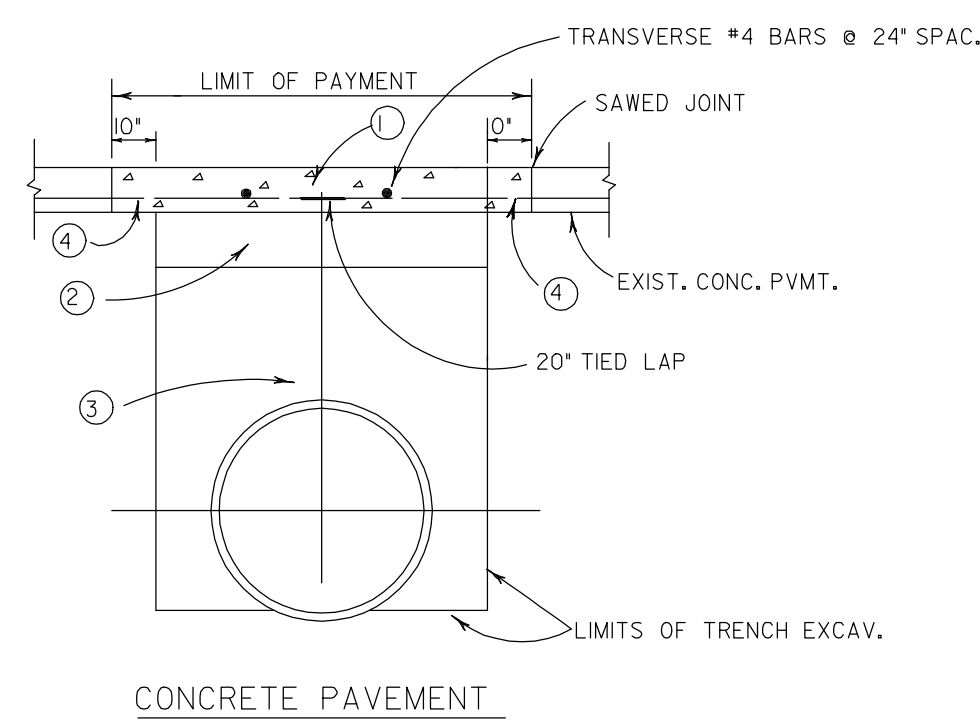


- 1 APPROX. 2" HMAC, TY-"D"
- 2 APPROX. 10" HMAC BASE, TY-"B"
- 3 MECHANICALLY TAMPED NATIVE MATERIAL, MAXIMUM LIFT OF 6"



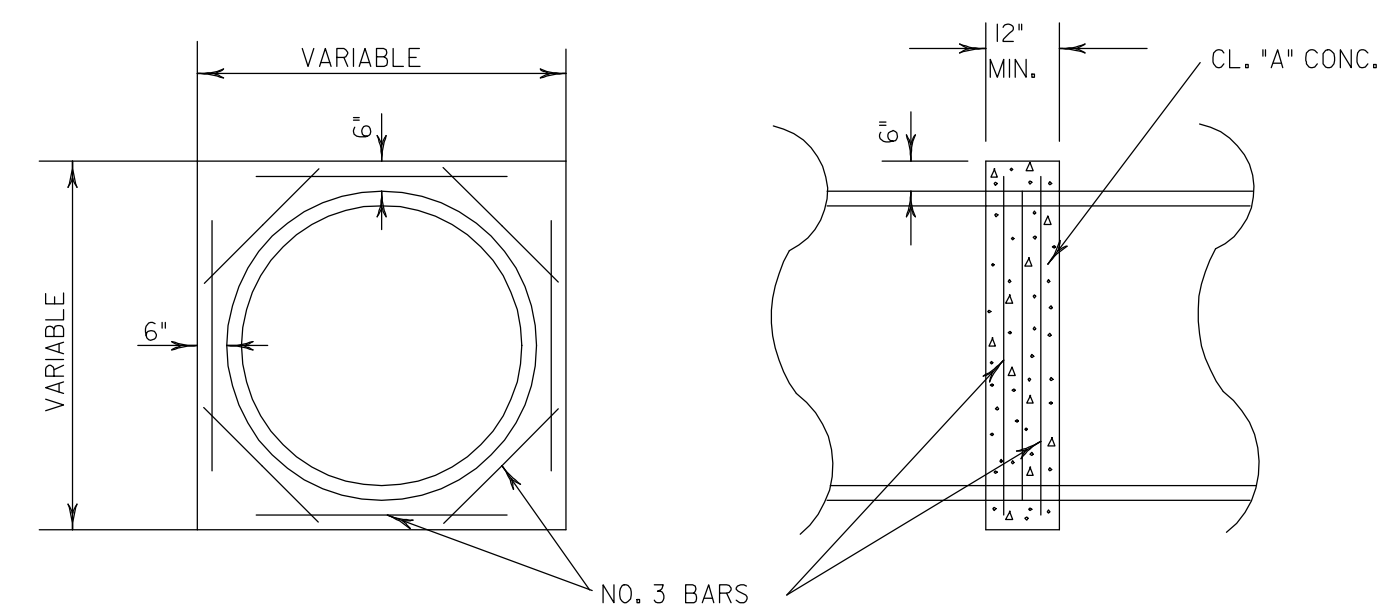
ASPHALT PAVEMENT

- 1 CLASS "A" CONC. PVMT. (TO MATCH EXIST. PVMT. DEPTH)
- 2 8" FLEXIBLE BASE
- 3 MECHANICALLY TAMPED NATIVE MATERIAL, MAXIMUM LIFT OF 6"
- 4 8" WELDED LAP



CONCRETE PAVEMENT

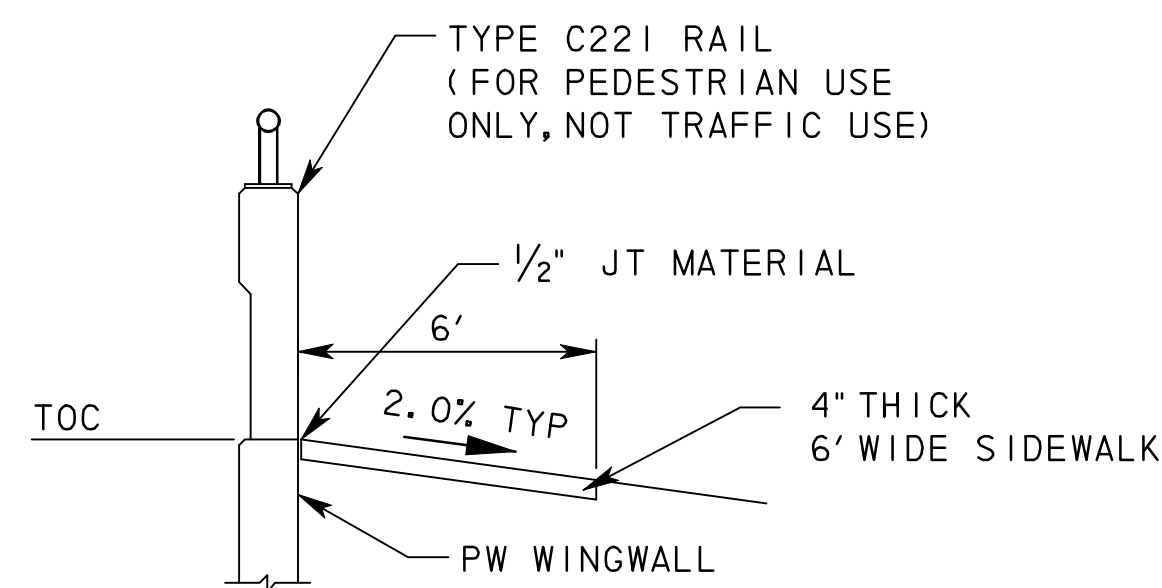
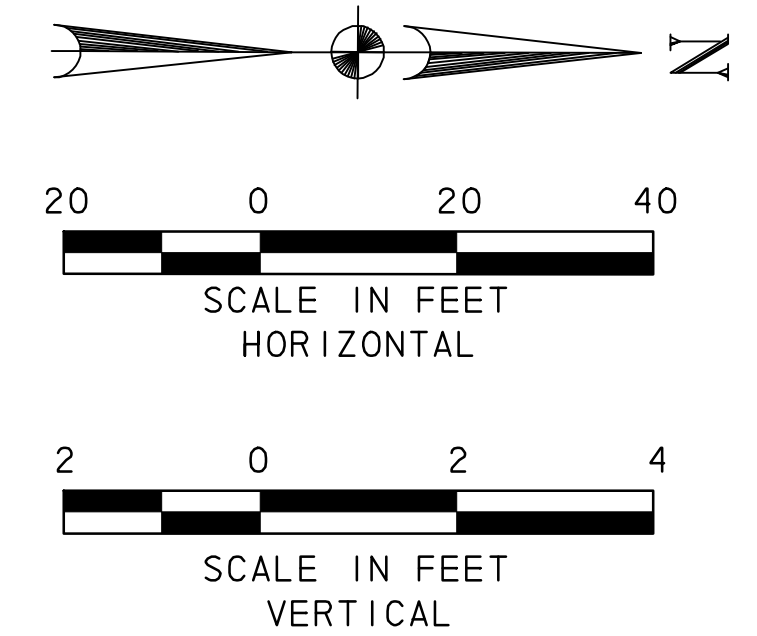
CUT AND RESTORE PAVEMENT DETAILS



CONCRETE COLLAR DETAILS

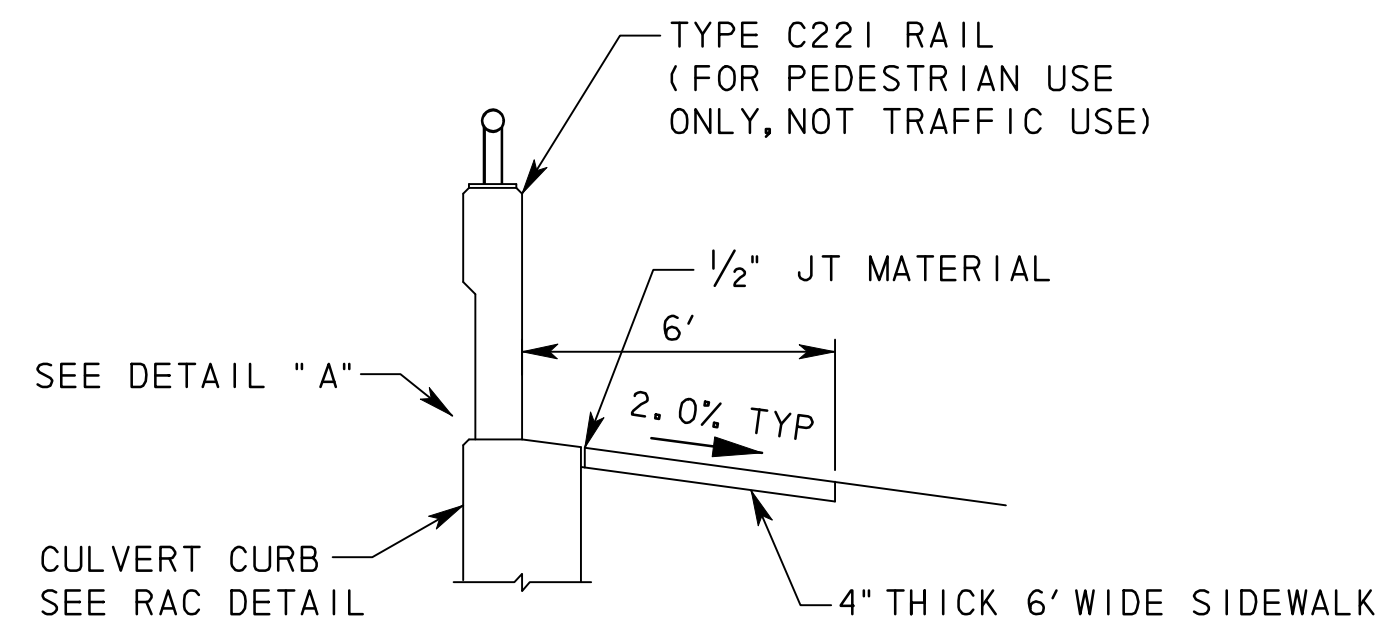
TO BE USED AS DIRECTED BY THE ENGINEER

NOTE: PIPE COLLARS WILL NOT BE PAID DIRECTLY, BUT SHALL BE CONSIDERED SUBSIDIARY TO THE VARIOUS BID ITEMS.



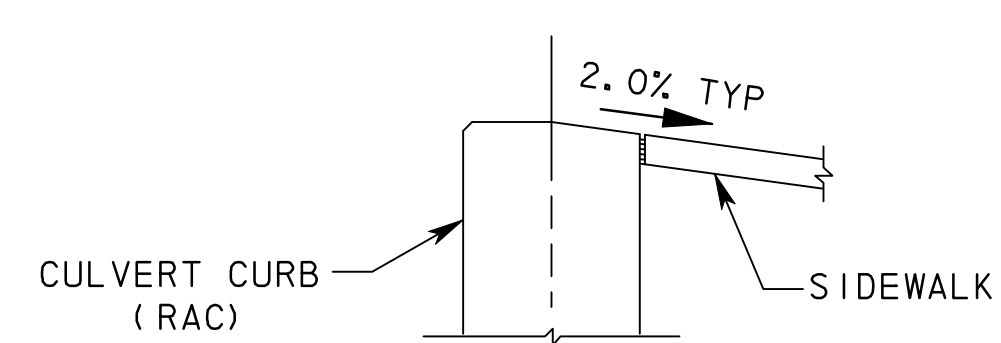
RAIL DETAIL AT CULVERT WINGWALLS

NTS



RAIL DETAIL AT CULVERT CURB

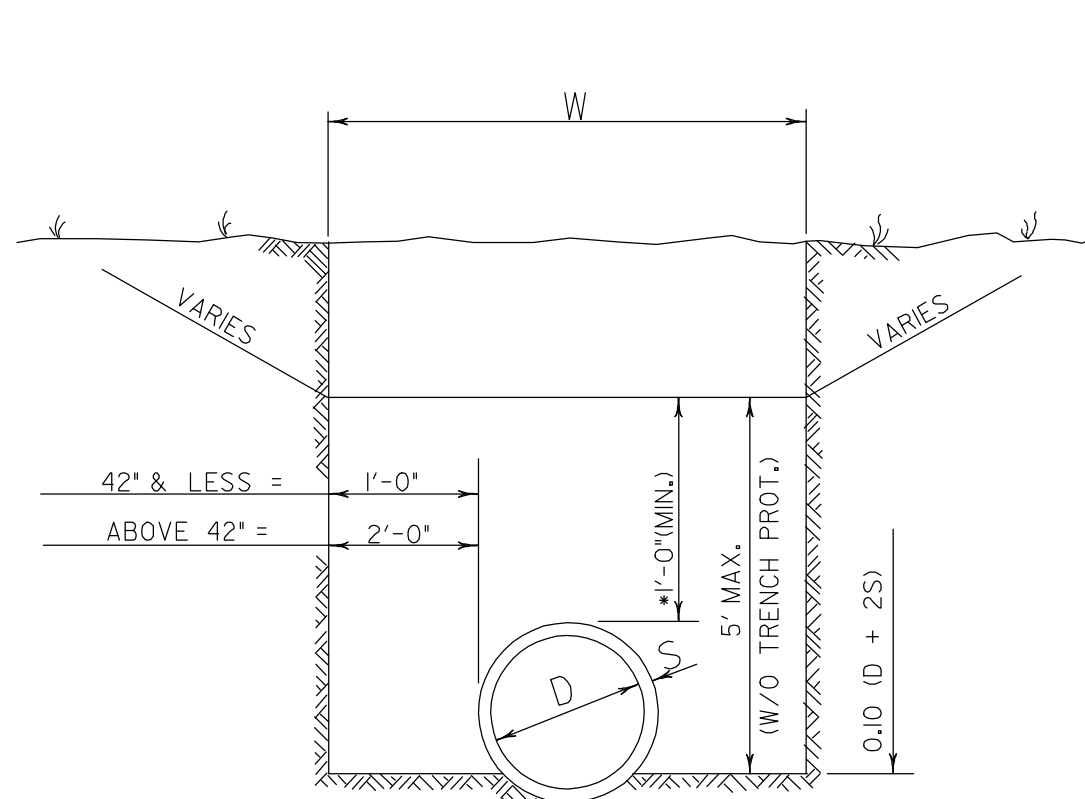
NTS



CONSTRUCT TOP OF RAIL ANCHORAGE CURB (RAC) SUCH THAT HALF OF THE TOP SLOPES AT 2% TO MATCH THE PROPOSED SIDEWALK CROSS-SLOPE.

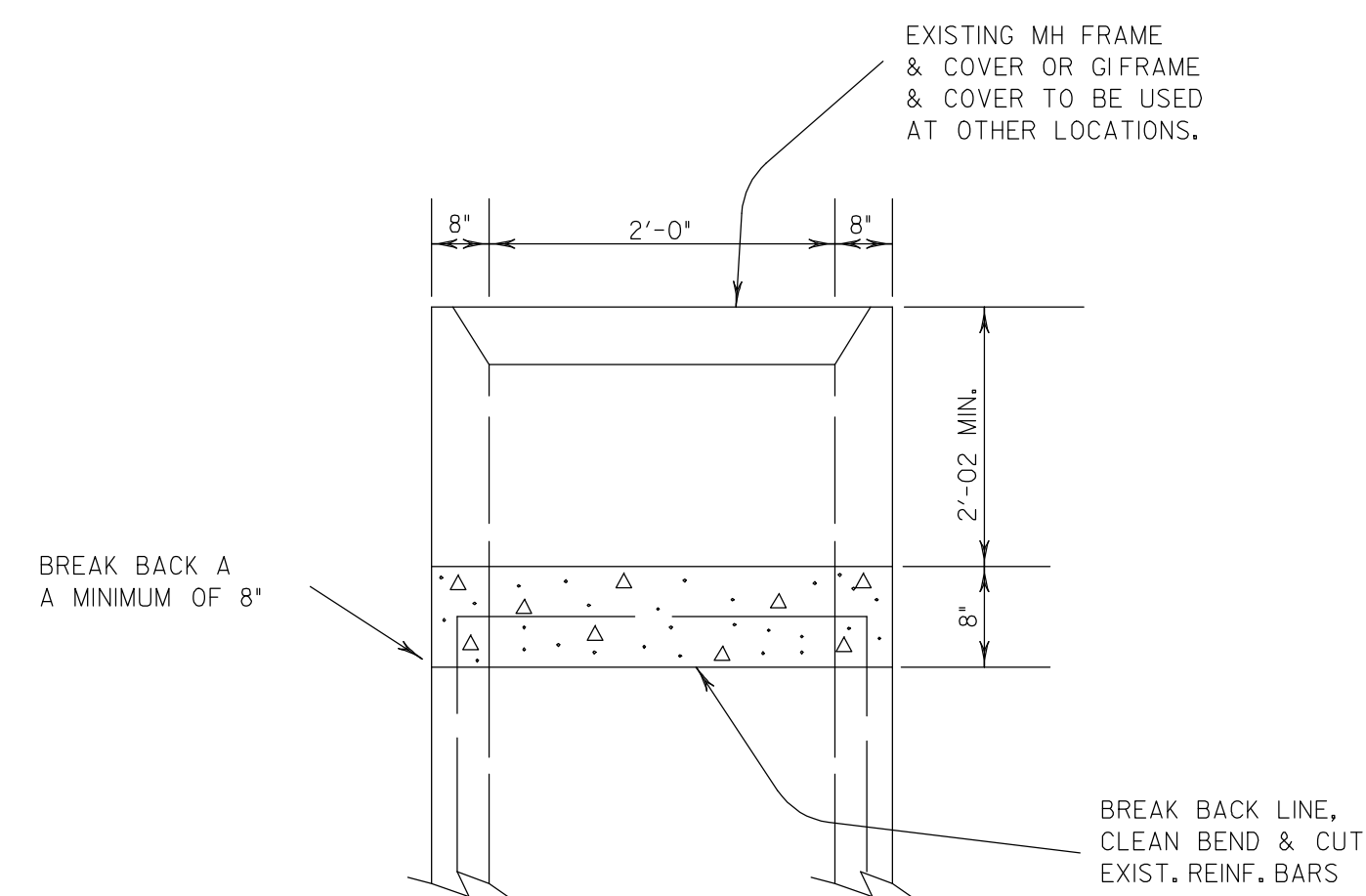
DETAIL "A"

NTS

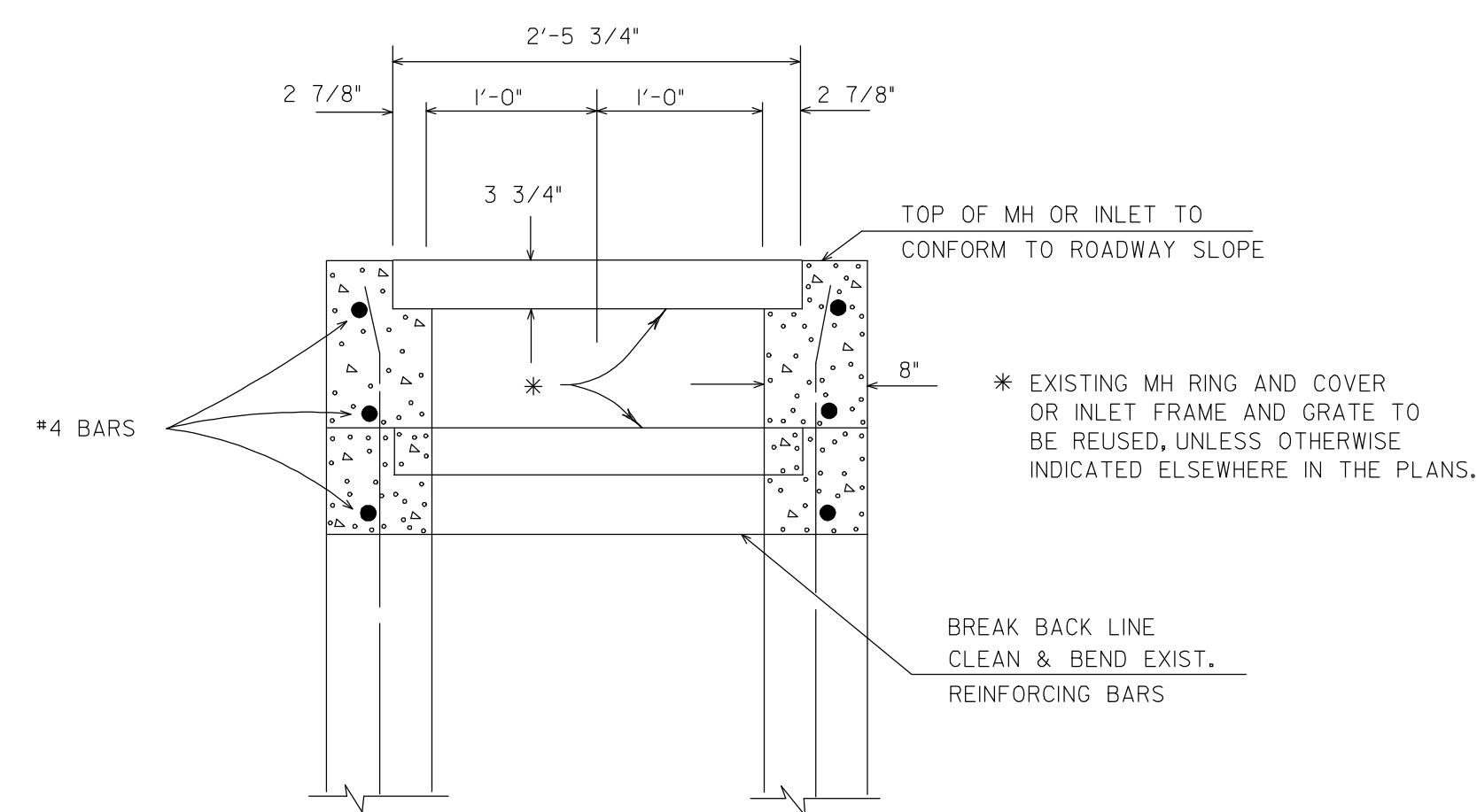


CLASS "C" BEDDING EXCEPT AS NOTED
*SEE STANDARD SPECIFICATION ITEM 400, EXCEPT WHERE NEGATIVE PROJECTION IS USED.

STRUCTURE EXCAVATION (TRENCH)



INLET AND MANHOLE CAP DETAIL



INLET AND MANHOLE ADJUSTING DETAIL

RECORD DRAWING

This drawing is a compilation of the original sealed engineering drawing and modifications by addenda, change orders and information furnished by the contractor. Information shown that was provided by the contractor and others not associated with the design engineer cannot be verified for accuracy or completeness. Original sealed drawing is on file at the office of AECOM USA Group, Inc., TBPE REG. NO. F-3082

ORIGINAL DRAWING SEALED & SIGNED BY
T.H. Gaertner, P.E.
TX NO. 37124

| | | | | |
|-----|---|-------------------|-----|---------|
| NO. | 1 | C221 RAIL DETAILS | THG | 5/20/08 |
| | | REVISION | BY | DATE |



City of Rockwall, Texas

205 BYPASS PHASE 6

MISC. DRAINAGE DETAILS

1 OF 1

TCB AECOM
TCB INC.
WWW.TCB.AECOM.COM
17300 DALLAS PARKWAY, SUITE 1010
DALLAS, TEXAS 75248

| | | | | | |
|----------|-----------|----------|----------------------------------|-------------|-------------|
| Unit | PW-DAL-FW | Scale | Horz: AS SHOWN Vert: AS SHOWN | Date | 11/24/2009 |
| Designed | SDB | Checked | TCB | Project No. | 60004153 |
| Drawn | TCB | Approved | TCB | Sheet | 172A of 216 |