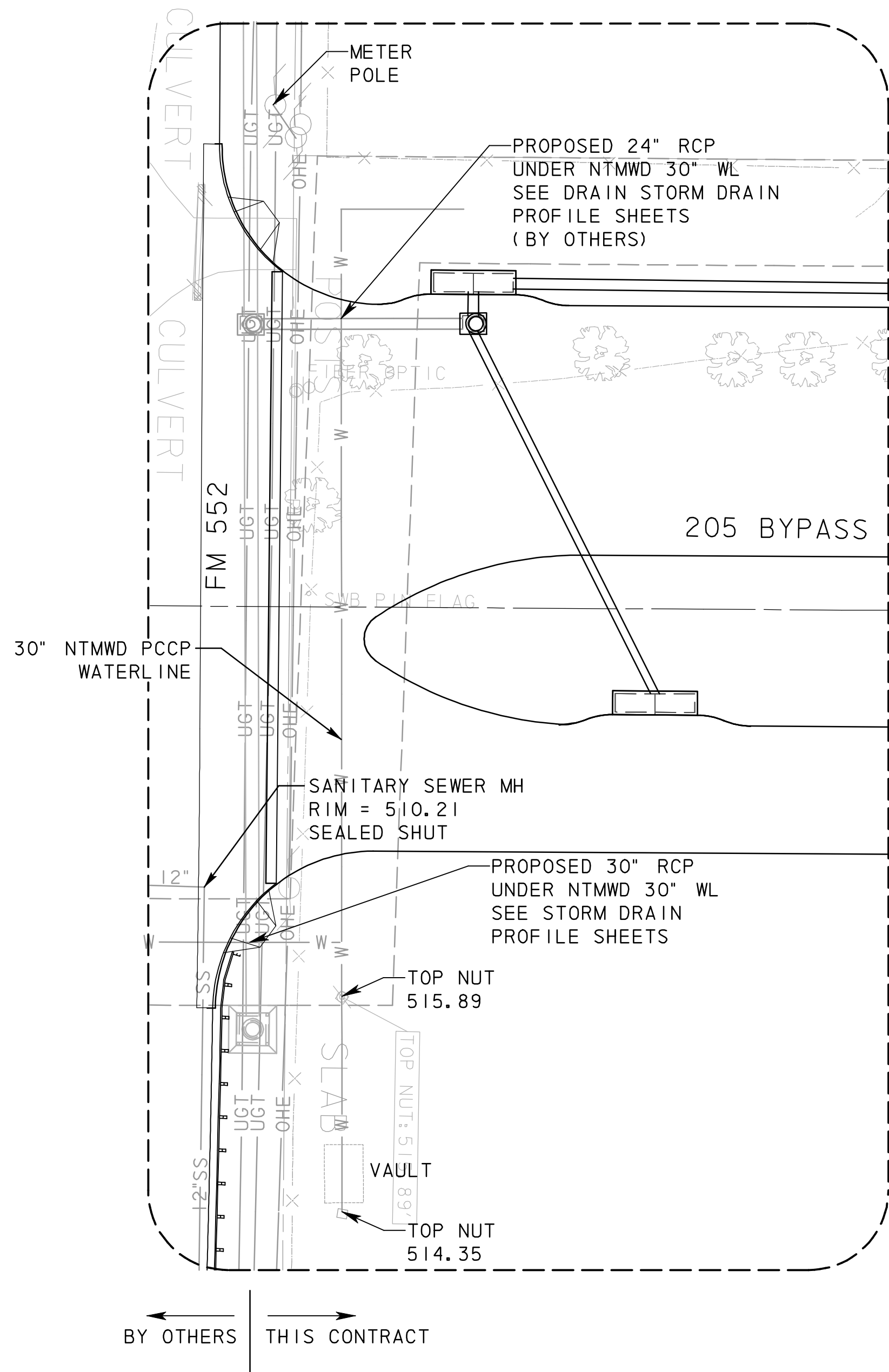
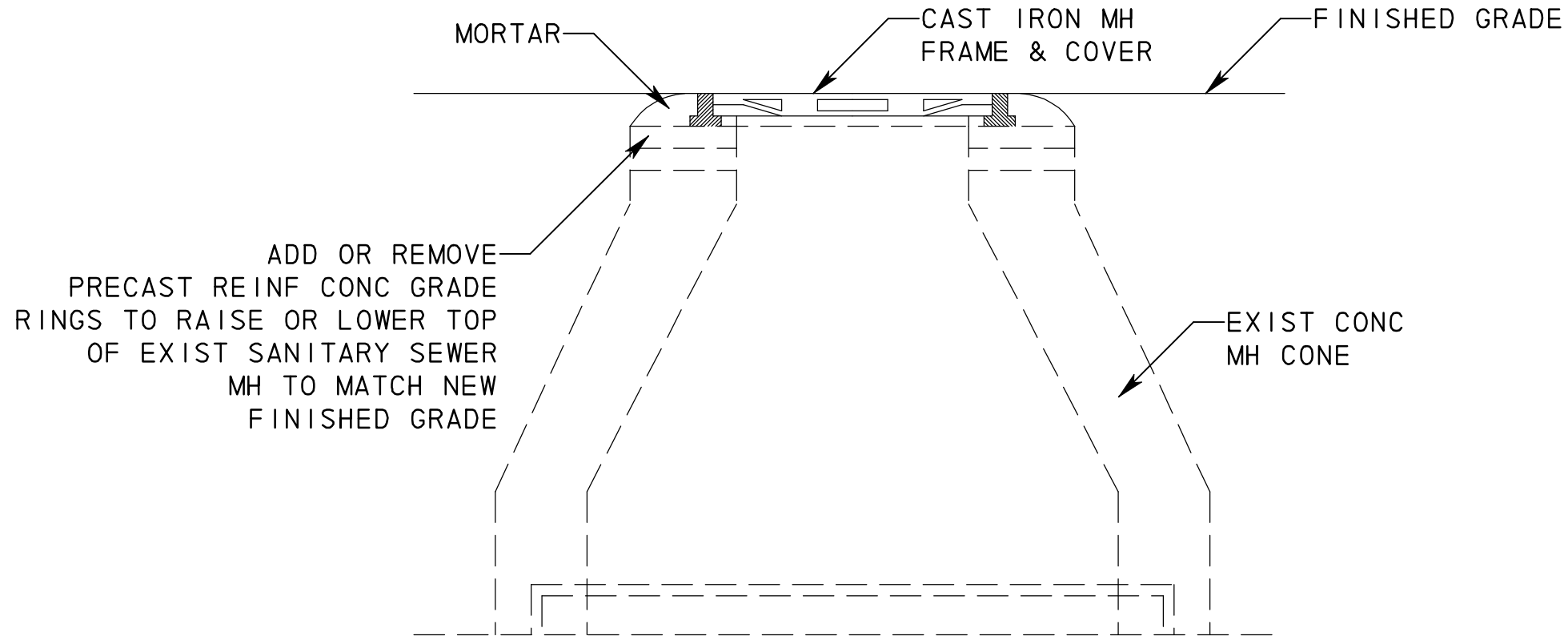
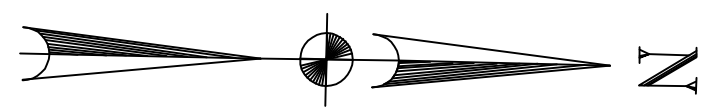


UNDERGROUND UTILITIES

THE LOCATION OF EXISTING UTILITIES SHOWN ON THESE PLANS ARE APPROXIMATE AND BASED ON DATA FURNISHED BY THE CITY OF ROCKWALL. IT IS THE RESPONSIBILITY OF THE CONTRACTOR TO LOCATE AND VERIFY ON-SITE THE UTILITIES THAT MAY CONFLICT WITH THE CONSTRUCTION.



ENLARGED PLAN A



- NOTES:
1. 2" X 8" X 24" PRECAST REINFORCED CONCRETE GRADE RINGS SHALL CONFORM TO ASTM C-478.
 2. SEE PLANS FOR FINISHED GRADE ELEVATION.

ADJUST MANHOLE TO PROP GRADE

- ATMOS GAS NOTES:
1. CONTACT KORUAN "KV" VARTEVAN (214-206-2720) FOR ATMOS GAS LINE LOCATION AND TO DETERMINE WHETHER LOWERING OR RELOCATION IS REQUIRED. CONTRACTOR SHALL POTHOLE GAS LINE AFTER LOCATED TO DETERMINE DEPTH OF COVER. AND SUBMIT TO ATMOS.
 2. ATMOS TYPICALLY RELOCATES FRANCHISE UTILITIES IN CITY/ TXDOT PUBLIC ROW AT THEIR OWN COST.
 3. IF ATMOS DETERMINES THAT LINE IS IN AN EXISTING GAS EASEMENT, CONTRACTOR SHALL PAY TO RELOCATE. COORDINATE DIRECTLY WITH ATMOS.

RECORD DRAWING

This drawing is a compilation of the original sealed engineering drawing and modifications by addenda, change orders and information furnished by the contractor. Information shown that was provided by the contractor and others not associated with the design engineer cannot be verified for accuracy or completeness. Original sealed drawing is on file at the office of AECOM USA Group, Inc., TBPE REG. NO. F-3082

ORIGINAL DRAWING SEALED & SIGNED BY
John W. Lacy, P.E.
TX NO. 90202

NO.	REVISION	BY	DATE
205 BYPASS PHASE 6			
UTILITIES LAYOUT			
5 OF 9			
		<small>TCB INC. WWW.TCB.AECOM.COM 17300 DALLAS PARKWAY, SUITE 1010 DALLAS, TEXAS 75248</small>	
Unit	PW-DAL-FW	Scale	Horz: AS SHOWN Vert: AS SHOWN
Designed	SRR/SDB	Checked	TCB
Drawn	FG	Approved	TCB
Date	11/24/2009	Project No.	60004153
Sheet	110	of	216