

UNDERGROUND UTILITIES
 THE LOCATION OF EXISTING UTILITIES SHOWN ON THESE PLANS ARE APPROXIMATE AND BASED ON DATA FURNISHED BY THE CITY OF ROCKWALL. IT IS THE RESPONSIBILITY OF THE CONTRACTOR TO LOCATE AND VERIFY ON-SITE THE UTILITIES THAT MAY CONFLICT WITH THE CONSTRUCTION.

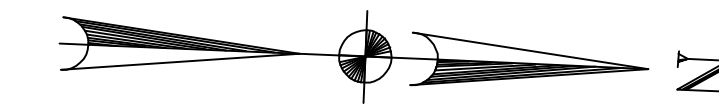
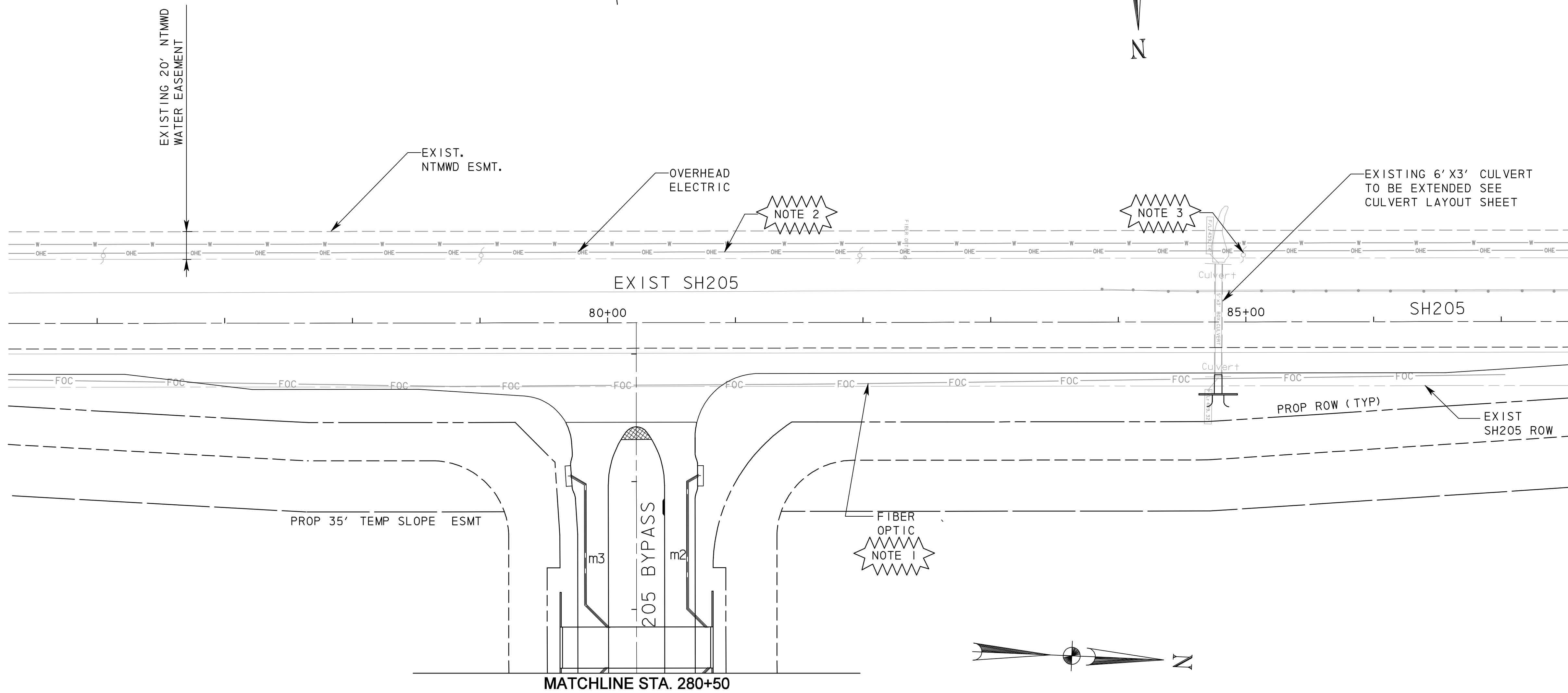
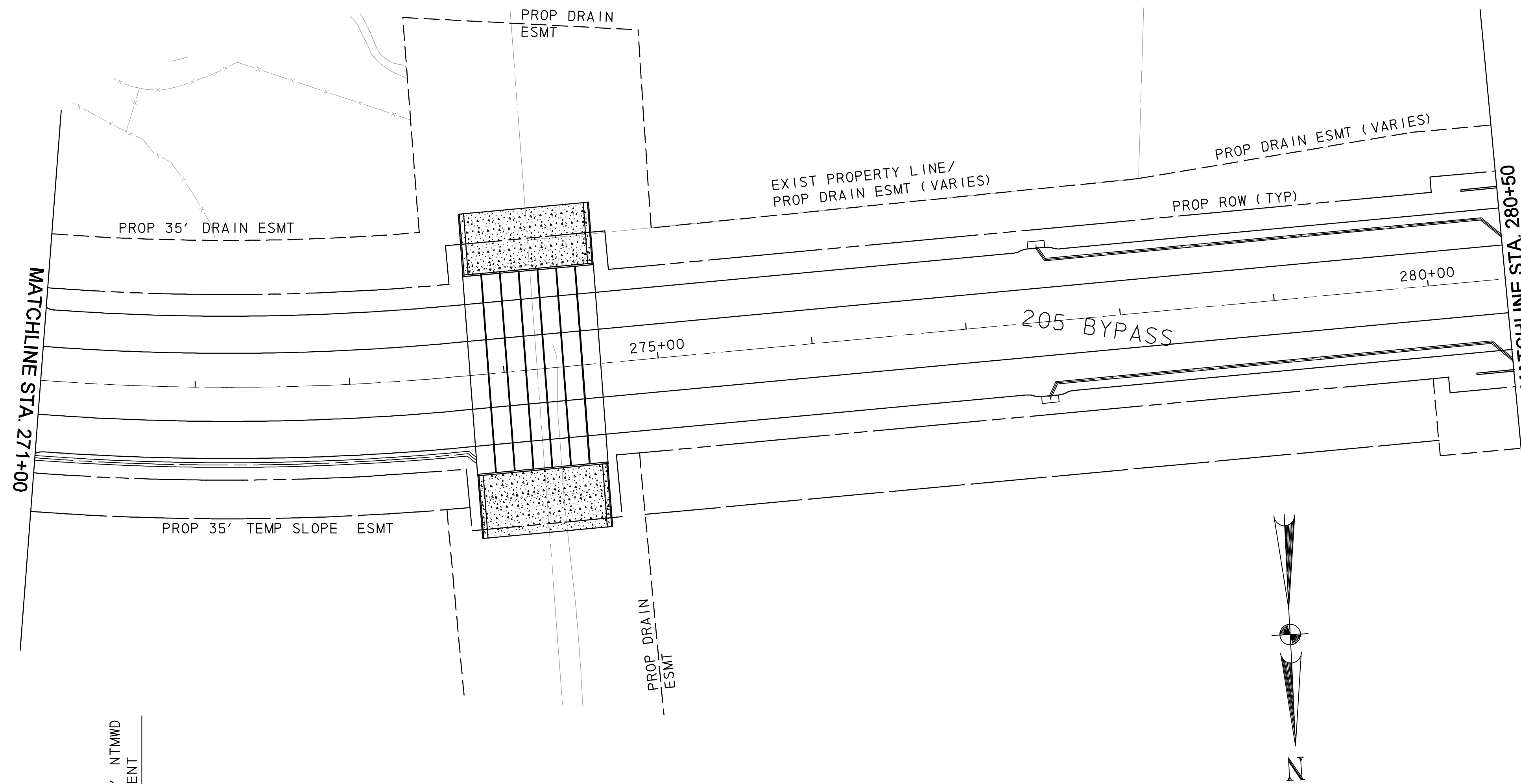


LEGEND

- PROPOSED ROW
- - - DRAINAGE EASEMENT
- - - TEMP SLOPE EASEMENT

UTILITY ADJUSTMENT NOTES:

1. COORDINATE WITH AT&T TO OBTAIN ADJUSTMENT OF EXISTING FIBER OPTIC LINES IN S.H. 205 ROW. (ROBERT HALL, 903-457-2210)
2. SEE SHEET 9 OF 9 FOR NTMWD NOTES.
3. CONTRACTOR SHALL COORDINATE WITH FARMERS ELECTRIC CORP AT 903-455-1715 (TIM MACKEY) TO OBTAIN ADJUSTMENT OR RELOCATION OF UTILITY POLES AS NEEDED.



RECORD DRAWING
 This drawing is a compilation of the original sealed engineering drawing and modifications by addenda, change orders and information furnished by the contractor. Information shown that was provided by the contractor and others not associated with the design engineer cannot be verified for accuracy or completeness. Original sealed drawing is on file at the office of AECOM USA Group, Inc., TBPE REG. NO. F-3082

ORIGINAL DRAWING SEALED & SIGNED BY
 T.H. Gaertner, P.E.
 TX NO. 37124

REVISED PAVEMENT LIMITS		THC	7/02/08
NO.	REVISION	BY	DATE
205 BYPASS PHASE 6			
UTILITIES LAYOUT			
4 OF 9			
		TCB INC. WWW.TCB.AECOM.COM 17300 DALLAS PARKWAY, SUITE 1010 DALLAS, TEXAS 75248	
Unit	PW-DAL-FW	Scale	Horz: AS SHOWN Vert: AS SHOWN
Designed	SDB	Checked	TCB
Drawn	FG	Approved	TCB
Date	11/24/2009	Project No.	60004153
Sheet	109A	of	216

P:\328\60004153-205bypass\cadd\sheet6\phase 6 - fm52 to 205\record drawing 10_7_09\109A\109A\109A\109A.dgn
 11/24/2009