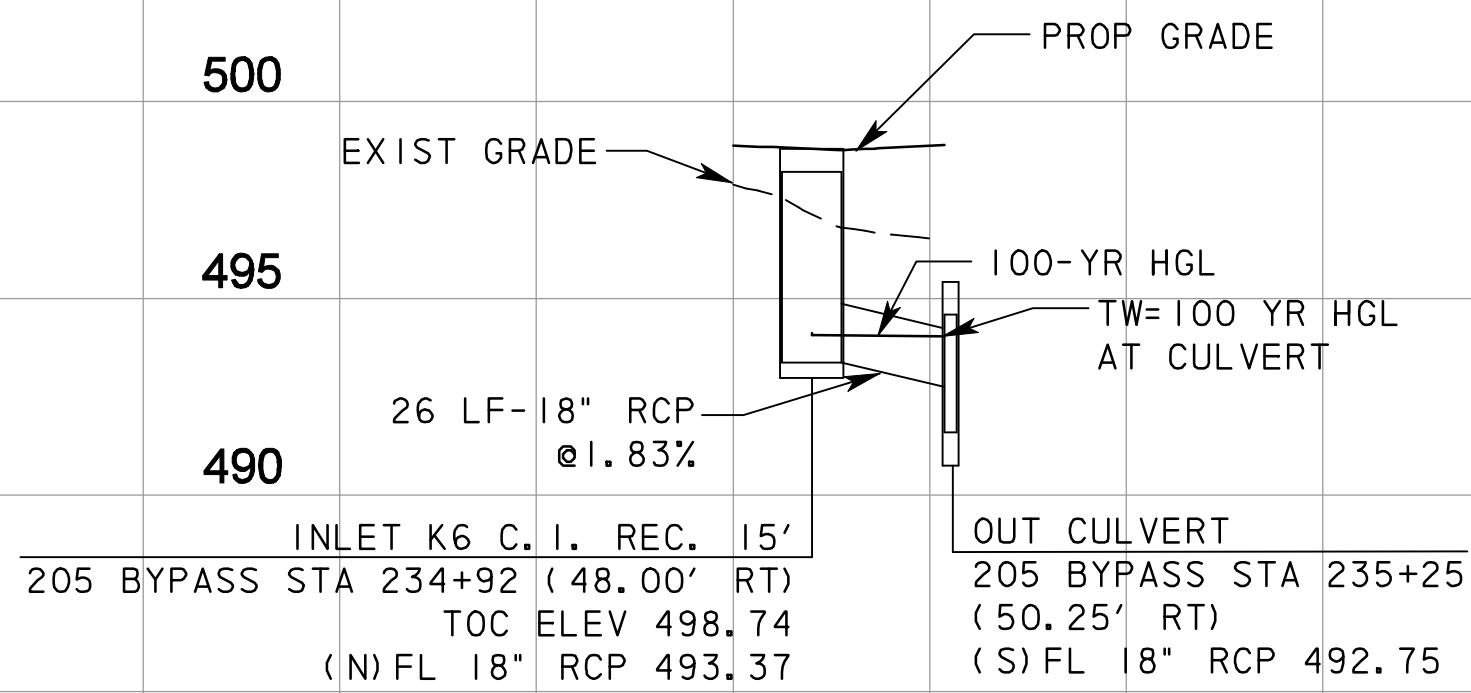
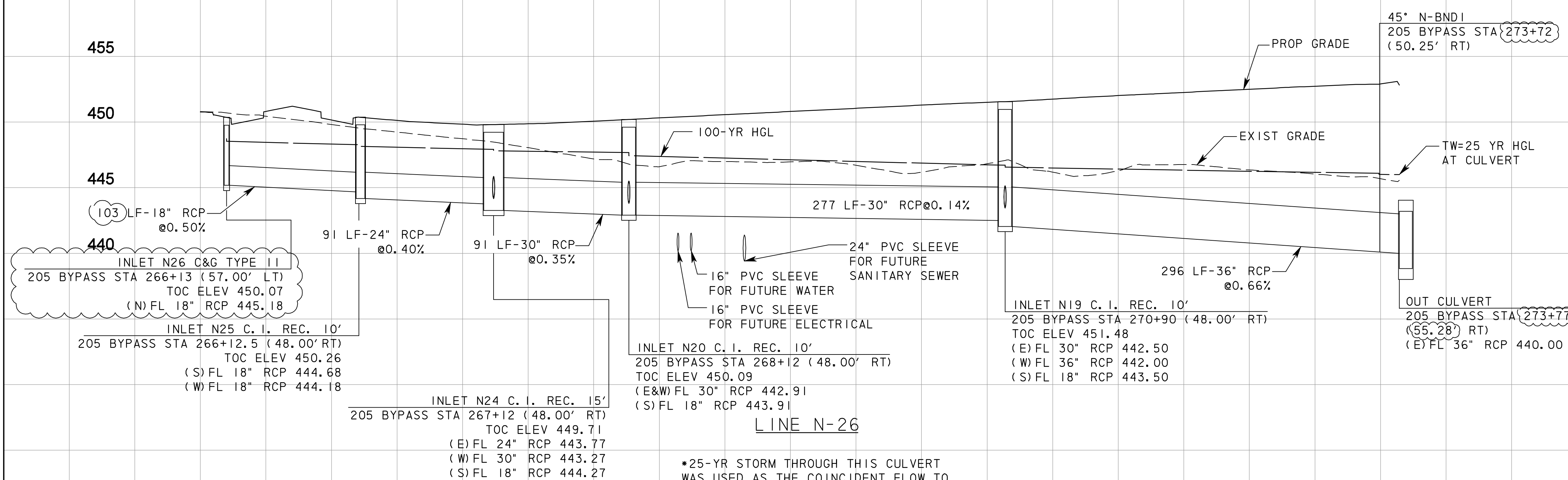


NOTES:

1. FLOWLINE ELEVATIONS AND GRADES ARE CALCULATED FROM CENTER TO CENTER OF PROPOSED DRAINAGE STRUCTURES. PIPE LENGTHS ON PLANS ARE ACTUAL LENGTHS USED IN QUANTITY TAKEOFFS.
2. ALL UTILITIES SHOWN ARE APPROXIMATE AND SHOULD BE FIELD VERIFIED AS TO THE LOCATION AND DEPTH PRIOR TO COSTRUCTION.
3. ALL STORM DRAIN PIPE IS CLASS III UNLESS OTHERWISE NOTED.
4. THE CONTROL POINT FOR RECESSED CURB INLETS IS AT THE CENTER OF THE OUTSIDE FACE OF THE INLET.
5. FOR RECESSED CURB INLETS, VARIABLE DIMENSION "W," AS SHOWN ON THE NCTCOG STANDARDS, SHALL BE 3.5-FT.
6. CONTRACTOR TO INSTALL CEMENT TREATED BACKFILL TO THE SPRINGLINE OF THE DRAINAGE PIPE FOR SLOPES GREATER THAN 10%.



LINE K-6



*25-YR STORM THROUGH THIS CULVERT WAS USED AS THE COINCIDENT FLOW TO THE 100-YR STORM FOR SYSTEM N-26.

RECORD DRAWING
This drawing is a compilation of the original sealed engineering drawing and modifications by addenda, change orders and information furnished by the contractor. Information shown that was provided by the contractor and others not associated with the design engineer cannot be verified for accuracy or completeness. Original sealed drawing is on file at the office of AECOM USA Group, Inc., TBPE REG. NO. F-3082

ORIGINAL DRAWING SEALED & SIGNED BY
T.H. Gaertner, P.E.
TX NO. 37124

I		LINE N-26		THG	5/29/08
NO.		REVISION		BY	DATE
205 BYPASS PHASE 6					
STORM DRAIN PROFILE LINES K6, N-26					
3 OF 4					
TCB		AECOM		TCB INC. WWW.TCB.AECOM.COM 17300 DALLAS PARKWAY, SUITE 1010 DALLAS, TEXAS 75248	
Unit	PW-DAL-FW	Scale	Horz: AS SHOWN Vert: AS SHOWN	Date	11/24/2009
Designed	US	Checked	TCB	Project No.	60004153
Drawn	FG	Approved	TCB	Sheet	102A of 216

P:\328\60004153-205bypass\cadd\sheet\phase 6 - final record drawing 10_7_09\102ASform.prf\file-03.dgn
 11/24/2009