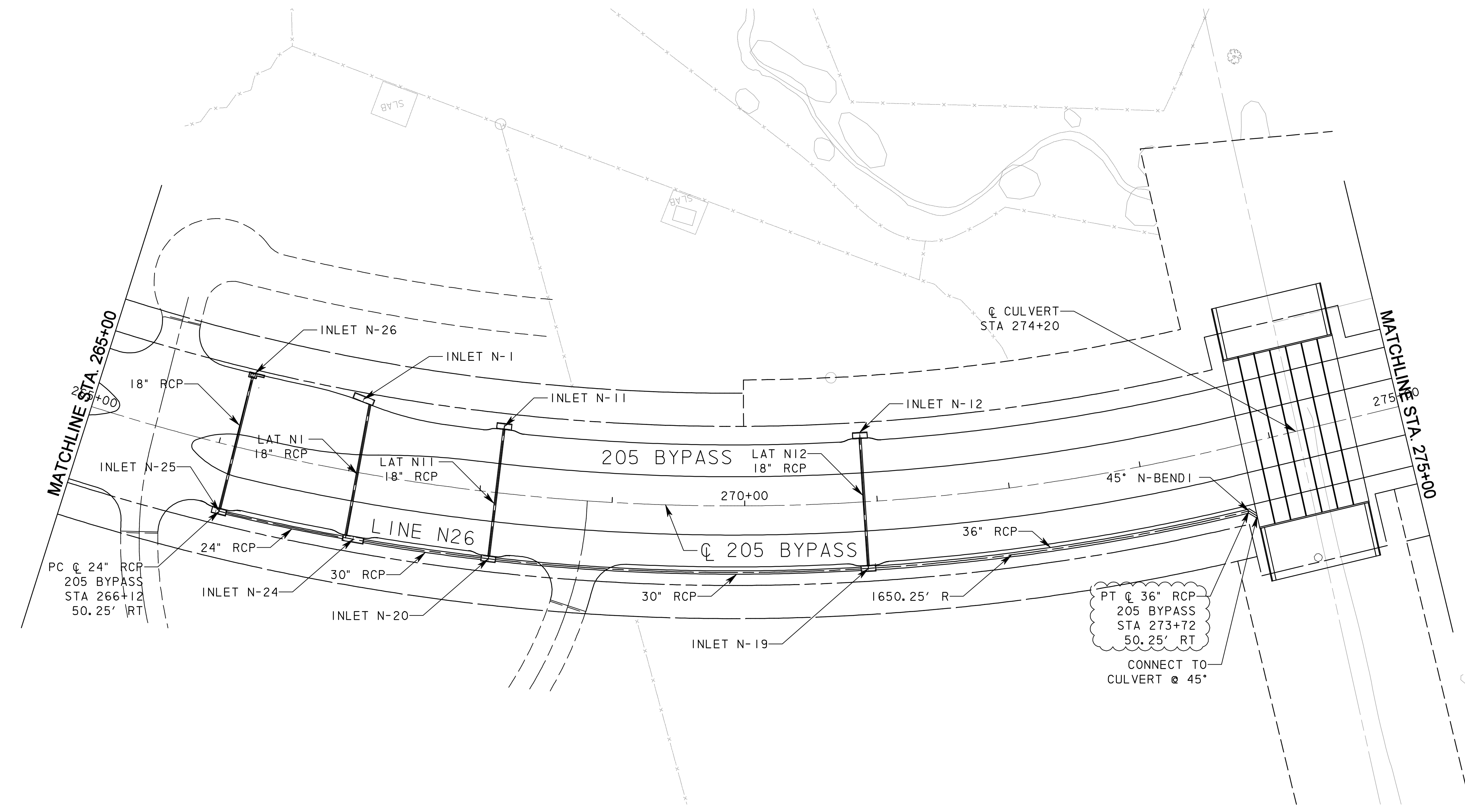


LEGEND

- PROPOSED ROW
- ==== PROPOSED STORM DRAIN
- - - - DRAINAGE EASEMENT
- - - - TEMP SLOPE EASEMENT
- ▭ INLET



RECORD DRAWING
 This drawing is a compilation of the original sealed engineering drawing and modifications by addenda, change orders and information furnished by the contractor. Information shown that was provided by the contractor and others not associated with the design engineer cannot be verified for accuracy or completeness. Original sealed drawing is on file at the office of AECOM USA Group, Inc., TBPE REG. NO. F-3082

ORIGINAL DRAWING
 SEALED & SIGNED BY
 T.H. Gaertner, P.E.
 TX NO. 37124

I	LINE N26	THG	05/29/08
NO.	REVISION	BY	DATE

City of Rockwall, Texas

**205 BYPASS
 PHASE 6**

**STORM PLAN
 STA. 265+00 TO STA. 275+00**

TCB INC. 11/24/2009
 WWW.TCB.AECOM.COM
 17300 DALLAS PARKWAY, SUITE 1010
 DALLAS, TEXAS 75248

Unit	PW-DAL-FW	Scale	Horz: AS SHOWN Vert: AS SHOWN	Date	11/24/2009
Designed	SB/US	Checked	TCB	Project No.	60004153
Drawn	FG	Approved	TCB	Sheet	97A of 216

P:\328\60004153-205bypass\cadd\sheet\phase 6 - final\record drawing 10_7_09\097ASform.Plan-07.dgn
 11/24/2009