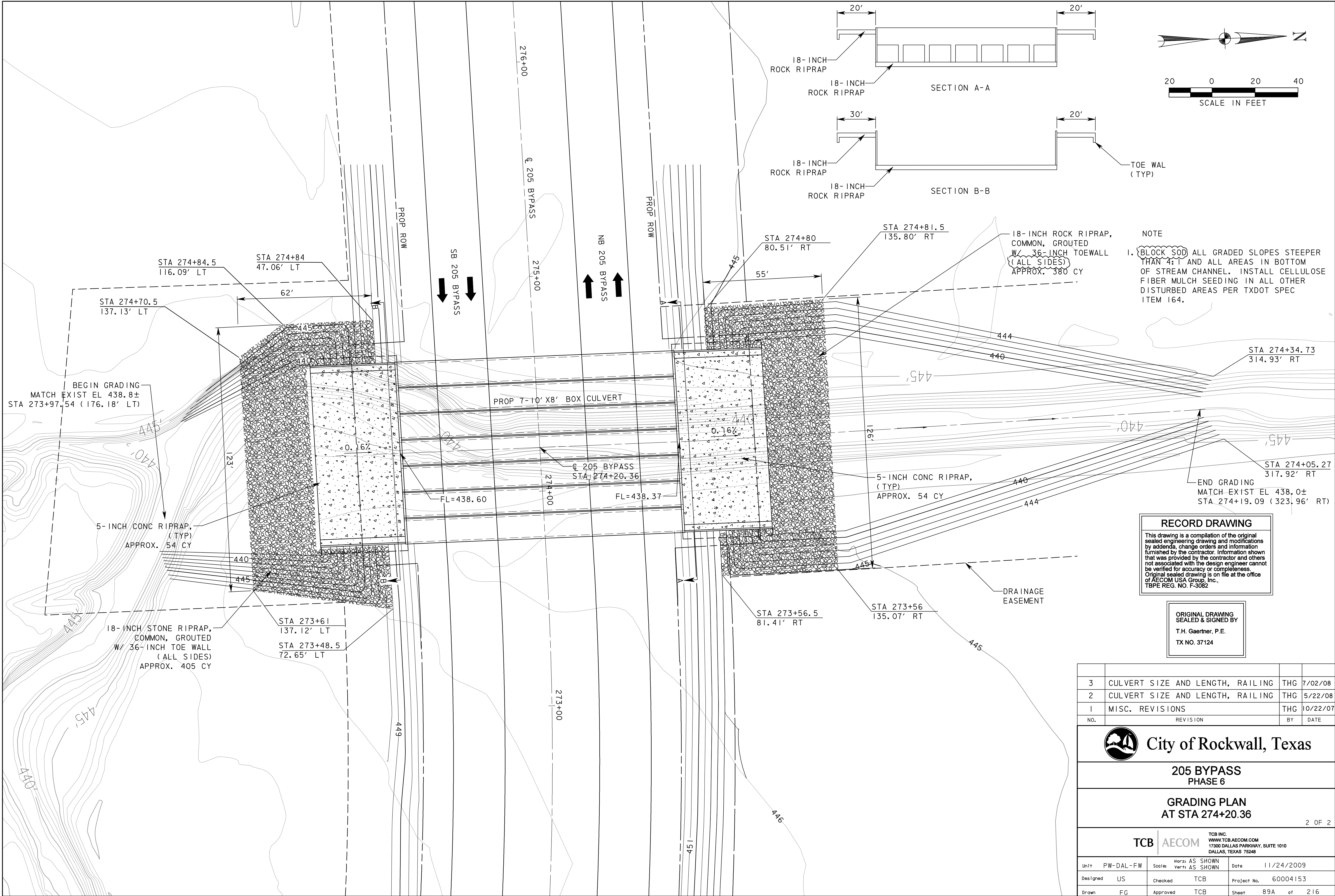


NOTE
 1. **BLOCK SOD** ALL GRADED SLOPES STEEPER THAN 4:1 AND ALL AREAS IN BOTTOM OF STREAM CHANNEL. INSTALL CELLULOSE FIBER MULCH SEEDING IN ALL OTHER DISTURBED AREAS PER TXDOT SPEC ITEM 164.



RECORD DRAWING
 This drawing is a compilation of the original sealed engineering drawing and modifications by addenda, change orders and information furnished by the contractor. Information shown that was provided by the contractor and others not associated with the design engineer cannot be verified for accuracy or completeness. Original sealed drawing is on file at the office of AECOM USA Group, Inc., TBPE REG. NO. F-3082

ORIGINAL DRAWING SEALED & SIGNED BY
 T.H. Gaertner, P.E.
 TX NO. 37124

| NO. | REVISION | BY | DATE |
|-----|----------------------------------|-----|----------|
| 3 | CULVERT SIZE AND LENGTH, RAILING | THG | 7/02/08 |
| 2 | CULVERT SIZE AND LENGTH, RAILING | THG | 5/22/08 |
| 1 | MISC. REVISIONS | THG | 10/22/07 |

City of Rockwall, Texas
205 BYPASS
PHASE 6
GRADING PLAN
AT STA 274+20.36

| | | | | | |
|----------|-----------|----------|----------------------------------|-------------|------------|
| Unit | PW-DAL-FW | Scale | Horz: AS SHOWN Vert: AS SHOWN | Date | 11/24/2009 |
| Designed | US | Checked | TCB | Project No. | 60004153 |
| Drawn | FG | Approved | TCB | Sheet | 89A of 216 |

P:\4328\60004153-205bypass\cadd\sheet6\phase 6 - fm52 to 205\record drawing 10_7_09\089\grading-51a 274+00.dgn
 11/24/2009