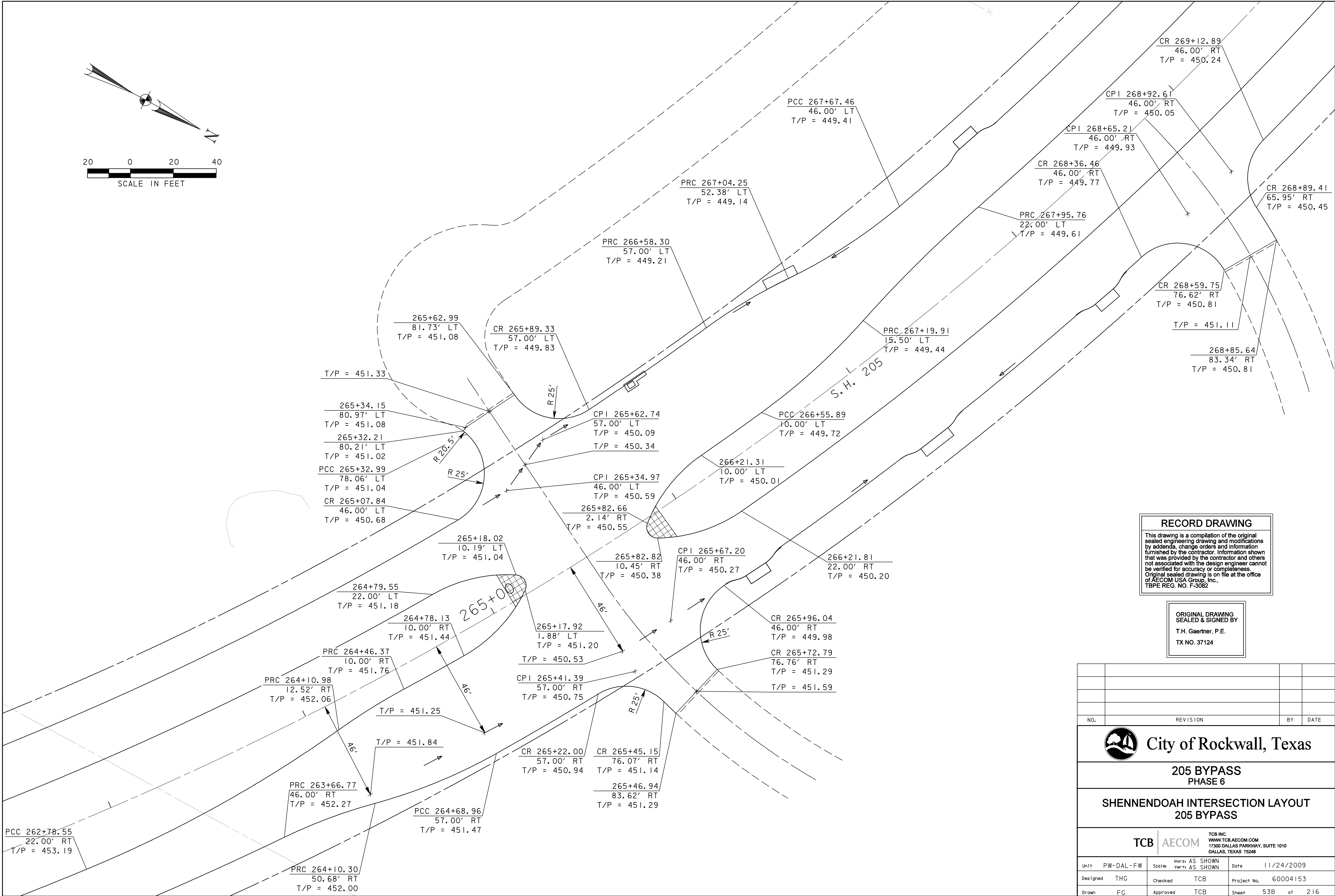


P:\328\60004\153-205bypass\cadd\sheet\phase 6 - fm52 to 205\record drawing 10_7_09\053BShennendoah Intersect Layout-SH205.dgn
 11/24/2009



RECORD DRAWING

This drawing is a compilation of the original sealed engineering drawing and modifications by addenda, change orders and information furnished by the contractor. Information shown that was provided by the contractor and others not associated with the design engineer cannot be verified for accuracy or completeness. Original sealed drawing is on file at the office of AECOM USA Group, Inc., TBPE REG. NO. F-3082

ORIGINAL DRAWING
 SEALED & SIGNED BY
 T.H. Gaertner, P.E.
 TX NO. 37124

NO.	REVISION	BY	DATE

City of Rockwall, Texas

**205 BYPASS
PHASE 6**

**SHENNENDOAH INTERSECTION LAYOUT
205 BYPASS**

TCB INC.
 WWW.TCB.AECOM.COM
 17300 DALLAS PARKWAY, SUITE 1010
 DALLAS, TEXAS 75248

Unit	PW-DAL-FW	Scale	Horz: AS SHOWN Vert: AS SHOWN	Date	11/24/2009
Designed	THG	Checked	TCB	Project No.	60004153
Drawn	FG	Approved	TCB	Sheet	53B of 216