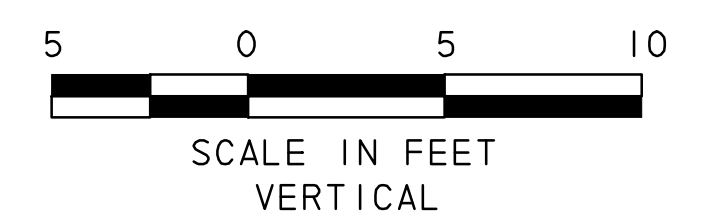
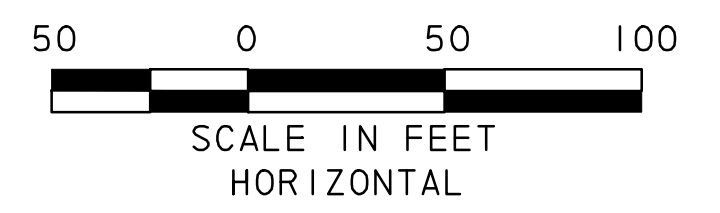
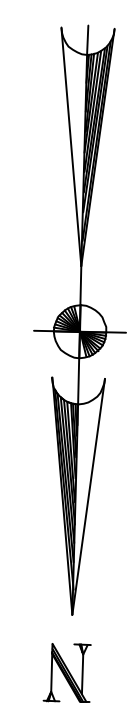
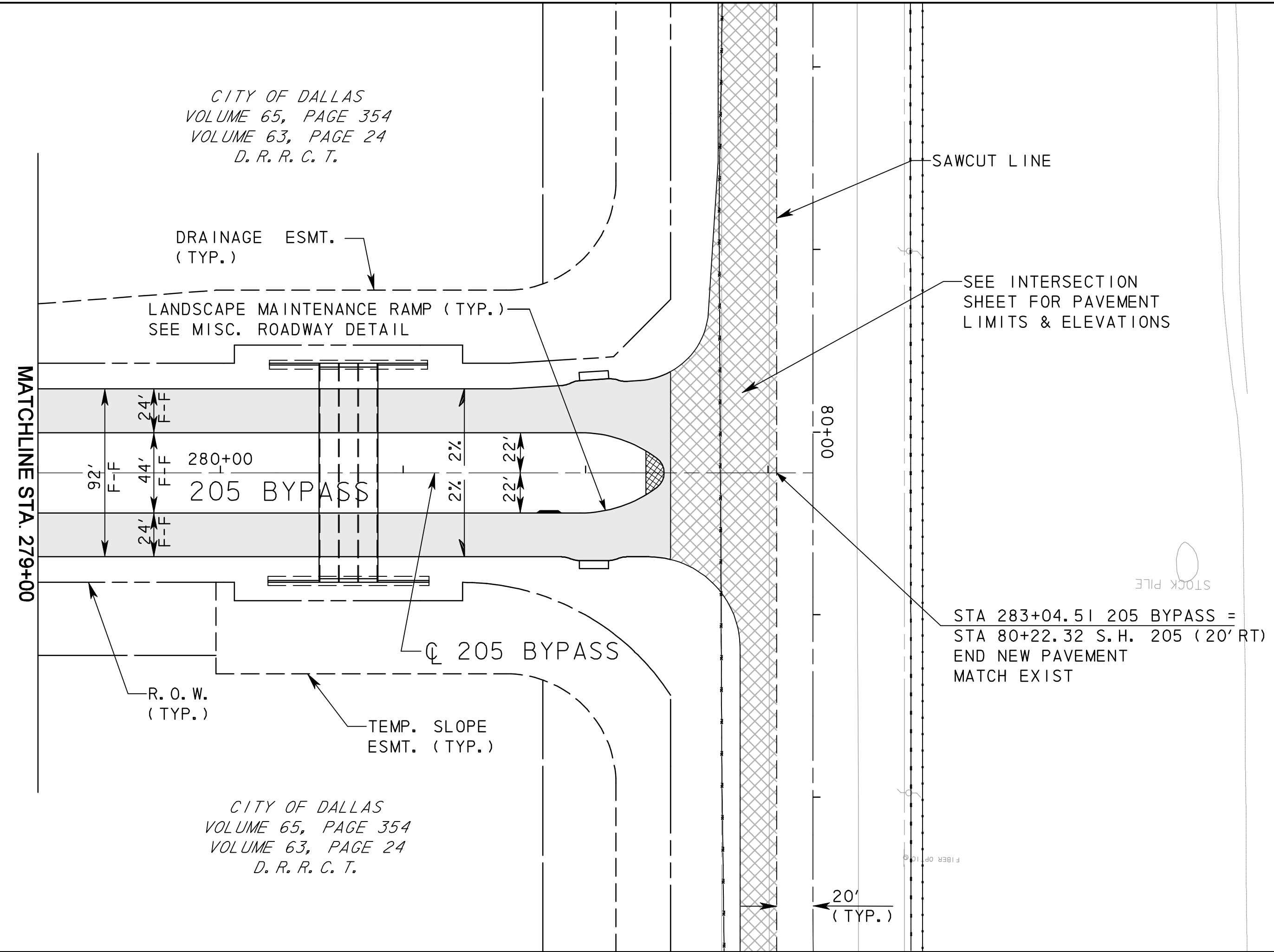


CITY OF DALLAS  
VOLUME 65, PAGE 354  
VOLUME 63, PAGE 24  
D. R. R. C. T.

CITY OF DALLAS  
VOLUME 65, PAGE 354  
VOLUME 63, PAGE 24  
D. R. R. C. T.



- LEGEND
- CONCRETE PAVEMENT
  - HMAC PAVEMENT
  - RECESSED CURB INLET
  - DROP INLET TYPE H

**RECORD DRAWING**

This drawing is a compilation of the original sealed engineering drawing and modifications by addenda, change orders and information furnished by the contractor. Information shown that was provided by the contractor and others not associated with the design engineer cannot be verified for accuracy or completeness. Original sealed drawing is on file at the office of AECOM USA Group, Inc., TBPE REG. NO. F-3082

ORIGINAL DRAWING  
SEALED & SIGNED BY  
T.H. Gaertner, P.E.  
TX NO. 37124

NO.	REVISION	BY	DATE
2	REVISED PAVEMENT LIMITS	THG	7/14/08
1	REVISED PAVEMENT LIMITS	THG	7/02/08



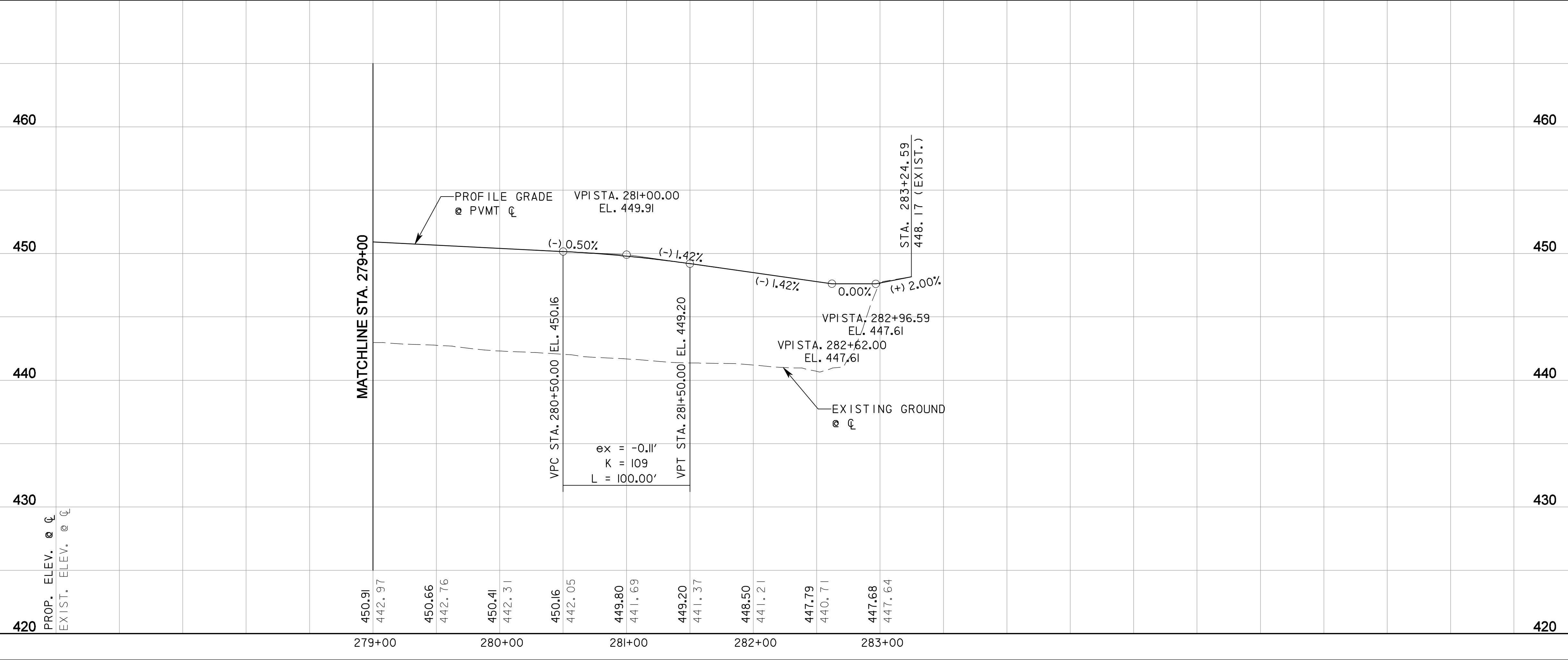
**205 BYPASS  
PHASE 6**

**PLAN & PROFILE  
STA. 279+00 TO STA. 285+00**

8 OF 11

TCB AECOM  
TCB INC.  
WWW.TCB.AECOM.COM  
17300 DALLAS PARKWAY, SUITE 1010  
DALLAS, TEXAS 75248

Unit	PW-DAL-FW	Scale	Horz: AS SHOWN Vert: AS SHOWN	Date	11/24/2009
Designed	THG	Checked	TCB	Project No.	60004153
Drawn	FG	Approved	TCB	Sheet	45A of 216



P:\328\60004153-205bypass\cadd\sheet\phase 6 - fm52 to 205\record drawing 10\_7\_09\045\PP-205BP-08.dgn  
 11/24/2009