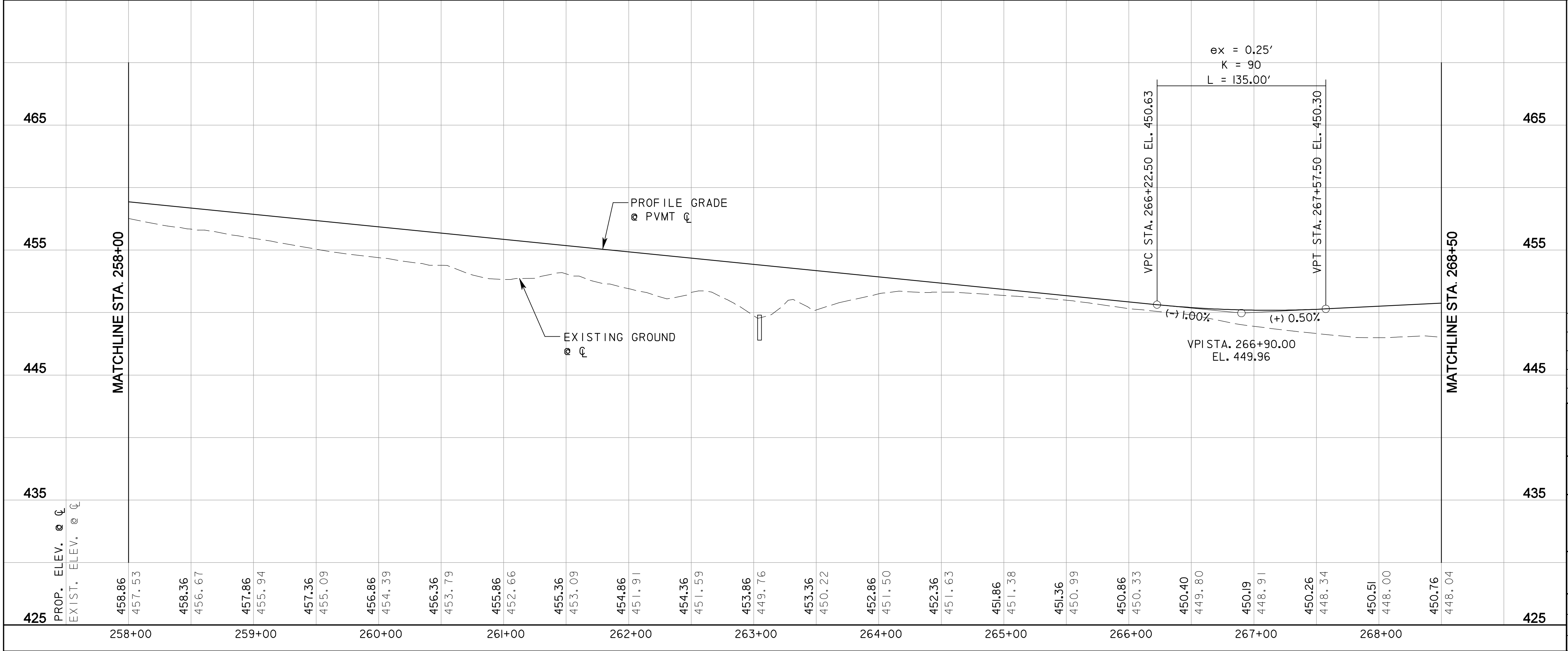


LEGEND

- CONCRETE PAVEMENT
- HMAC PAVEMENT
- RECESSED CURB INLET
- DROP INLET TYPE H

CURVE DATA					
NO.	Δ	D	R	T	L
205BP-13	57° 36' 21.09" (LT)	3° 34' 51.55"	1,600.00'	879.71'	1,608.66'



RECORD DRAWING

This drawing is a compilation of the original sealed engineering drawing and modifications by addenda, change orders and information furnished by the contractor. Information shown that was provided by the contractor and others not associated with the design engineer cannot be verified for accuracy or completeness. Original sealed drawing is on file at the office of AECOM USA Group, Inc., TBPE REG. NO. F-3082

ORIGINAL DRAWING SEALED & SIGNED BY
 T.H. Gaertner, P.E.
 TX NO. 37124

NO.	REVISION	BY	DATE

City of Rockwall, Texas

205 BYPASS PHASE 6

PLAN & PROFILE
 STA. 258+00 TO STA. 268+50

6 OF 11

TCB AECOM		TCB INC. WWW.TCB.AECOM.COM 17300 DALLAS PARKWAY, SUITE 1010 DALLAS, TEXAS 75248	
Unit: PW-DAL-FW	Scale: Horiz: AS SHOWN Vert: AS SHOWN	Date: 11/24/2009	
Designed: SDB	Checked: TCB	Project No.: 60004153	
Drawn: TCB	Approved: TCB	Sheet: 43A	of 216

P:\328\60004153-205bypass\cadd\sheet6\phase 6 - fm52 to 205\record drawing 10_7_09\043PP-205BP-06.dgn
 11/24/2009