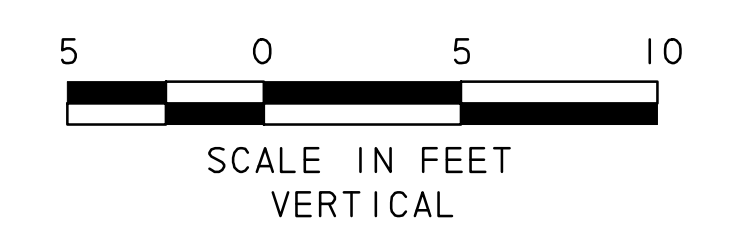
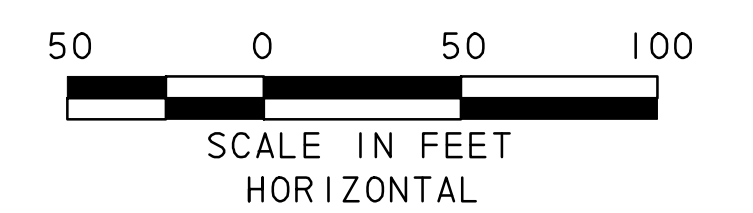


W. W. CARUTH, JR.
VOLUME 66 PAGE 493
D. R. R. C. T.

W. W. CARUTH, JR.
VOLUME 66 PAGE 493
D. R. R. C. T.

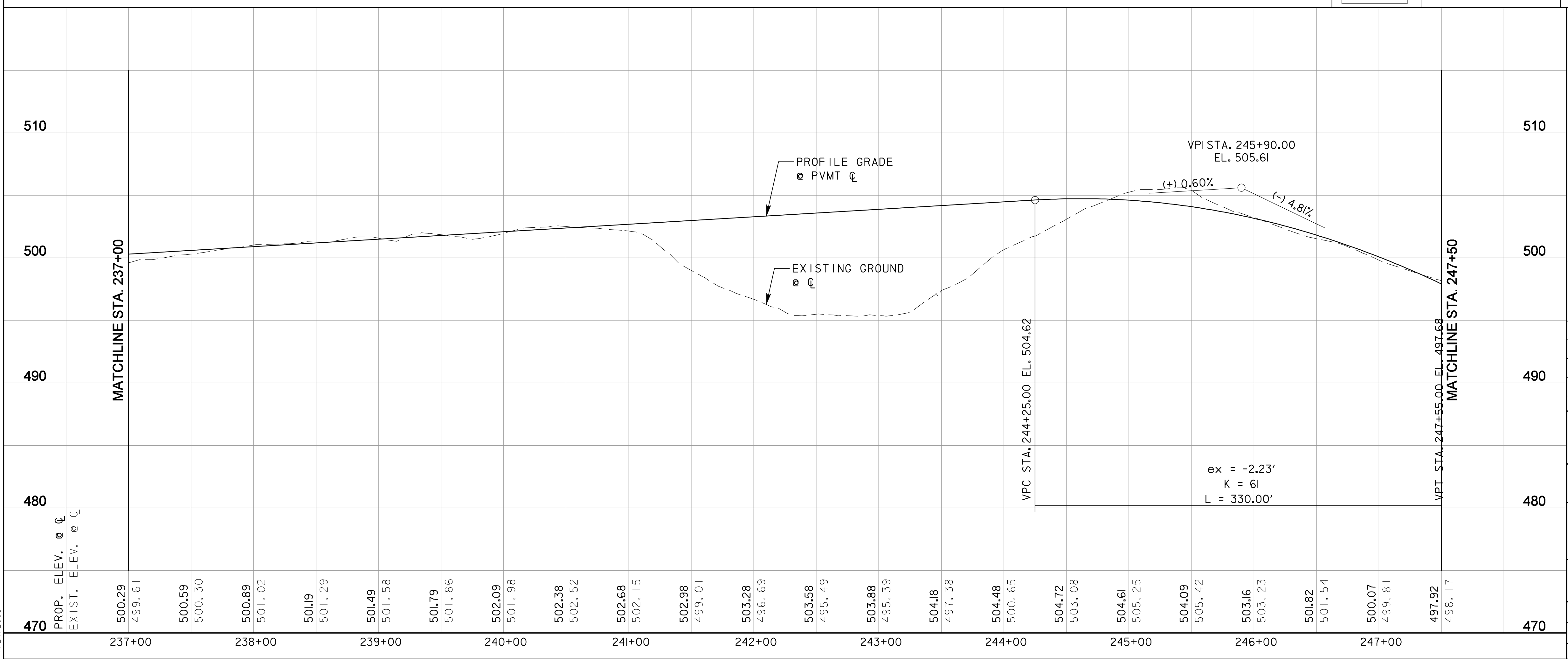


LEGEND

	CONCRETE PAVEMENT
	HMAC PAVEMENT
	RECESSED CURB INLET

NOTE:
1. FOR DRAINAGE DITCH INFORMATION, SEE DITCH PLANS.

CURVE DATA					
NO.	Δ	D	R	T	L
205BP-11	56° 17' 36.81" (LT)	3° 49' 10.99"	1,500.00'	802.50'	1,473.76'
205BP-12	23° 19' 41.67" (RT)	1° 08' 45.30"	5,000.00'	1,032.19'	2,035.77'



RECORD DRAWING
This drawing is a compilation of the original sealed engineering drawing and modifications by addenda, change orders and information furnished by the contractor. Information shown that was provided by the contractor and others not associated with the design engineer cannot be verified for accuracy or completeness. Original sealed drawing is on file at the office of AECOM USA Group, Inc., TBPE REG. NO. F-3082

ORIGINAL DRAWING
SEALED & SIGNED BY
Matthew L. Abbe, P.E.
TX NO. 92715

NO.	REVISION	BY	DATE

City of Rockwall, Texas

**205 BYPASS
PHASE 6**

**PLAN & PROFILE
STA. 237+00 TO STA. 247+50**

4 OF 11

Unit	PW-DAL-FW	Scale	Horz: AS SHOWN Vert: AS SHOWN	Date	11/24/2009
Designed	SKW/MLA	Checked	TCB	Project No.	60004153
Drawn	TCB	Approved	TCB	Sheet	41 of 216

P:\4328\60004153-205bypass\cadd\sheet\phase 6 - final\record drawing 10..7..09\041PR-205BP-04.dgn
 11/24/2009