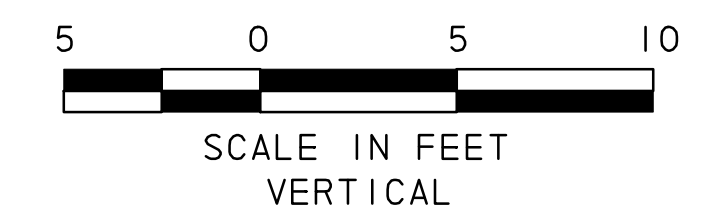
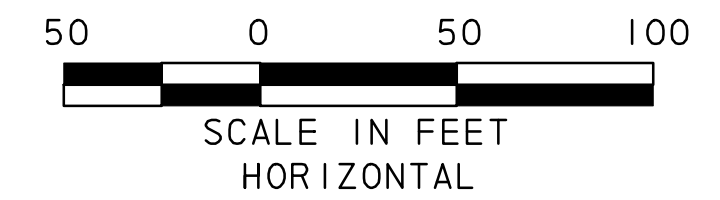
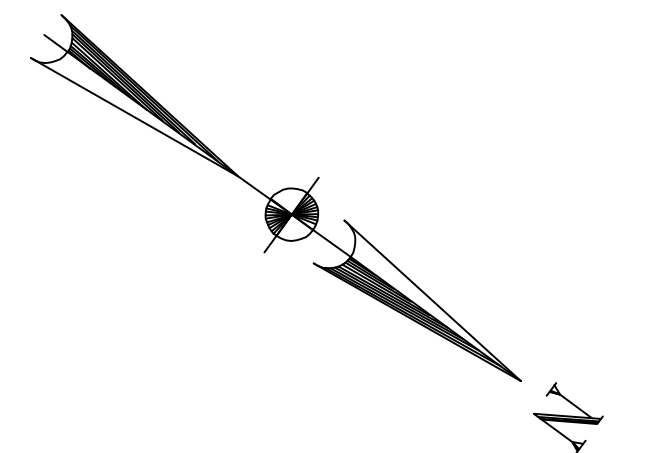
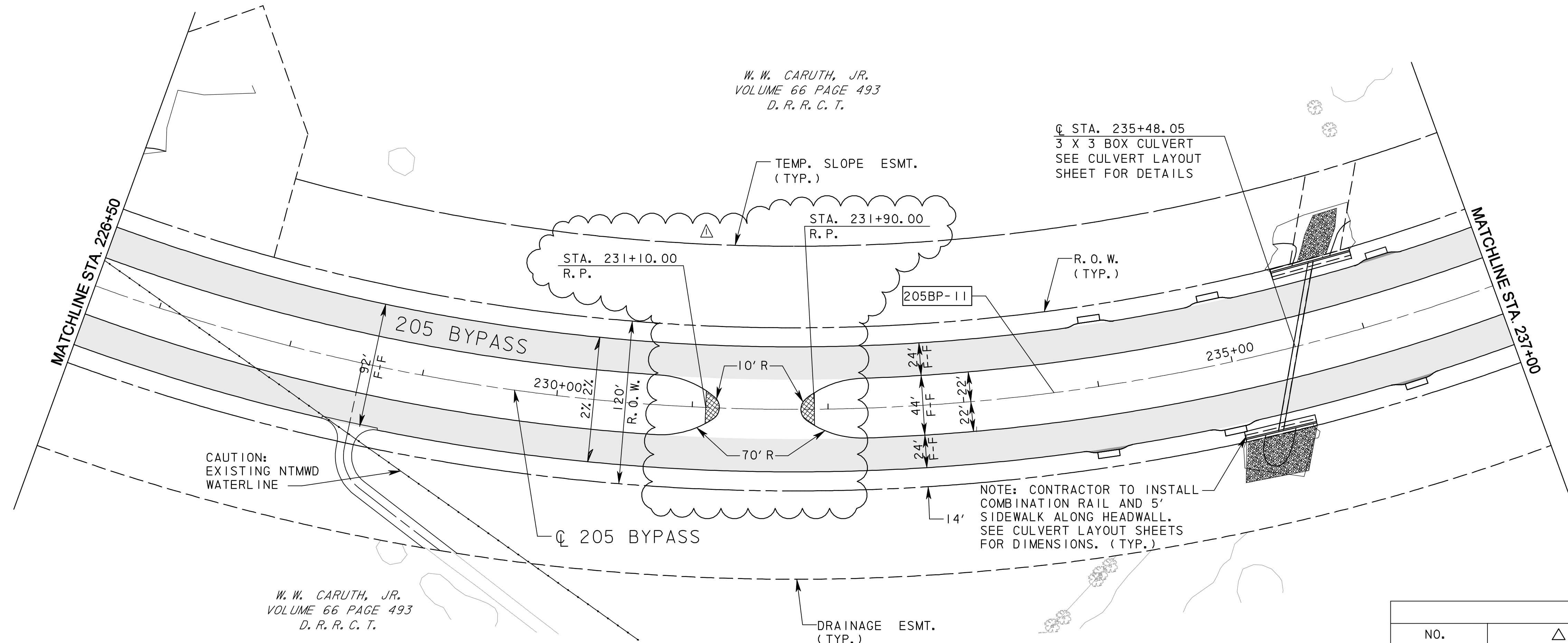


W. W. CARUTH, JR.  
VOLUME 66 PAGE 493  
D. R. R. C. T.



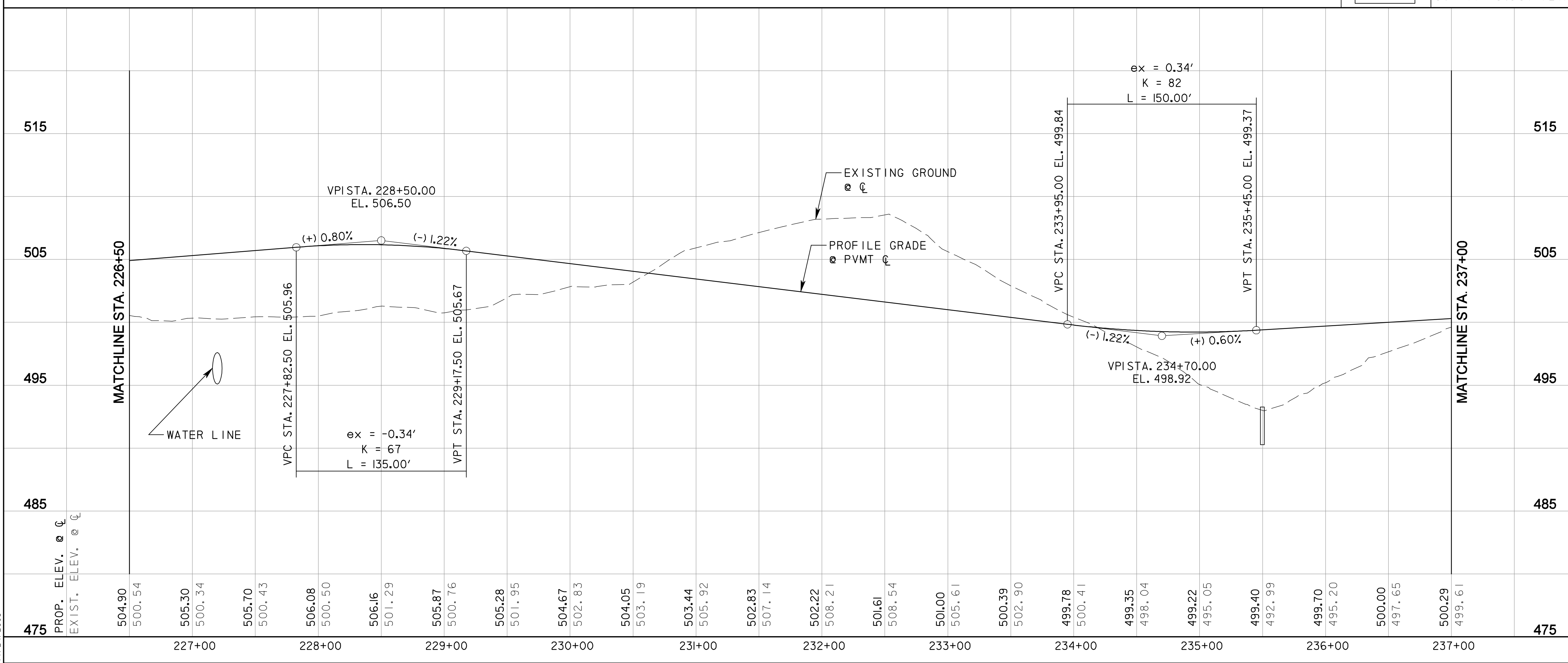
- LEGEND
- CONCRETE PAVEMENT
  - HMAC PAVEMENT
  - RECESSED CURB INLET

NOTE:  
1. FOR DRAINAGE DITCH INFORMATION, SEE DITCH PLANS.



W. W. CARUTH, JR.  
VOLUME 66 PAGE 493  
D. R. R. C. T.

CURVE DATA					
NO.	$\Delta$	D	R	T	L
205BP-11	56° 17' 36.81" (LT)	3° 49' 10.99"	1,500.00'	802.50'	1,473.76'



**RECORD DRAWING**  
This drawing is a compilation of the original sealed engineering drawing and modifications by addenda, change orders and information furnished by the contractor. Information shown that was provided by the contractor and others not associated with the design engineer cannot be verified for accuracy or completeness. Original sealed drawing is on file at the office of AECOM USA Group, Inc., TBPE REG. NO. F-3082

ORIGINAL DRAWING SEALED & SIGNED BY  
Matthew L. Abbe, P.E.  
TX NO. 92715

ADDED MEDIAN OPENING		M. L. A.	10/23/07
NO.	REVISION	BY	DATE
<b>205 BYPASS PHASE 6</b>			
<b>PLAN &amp; PROFILE STA. 226+50 TO STA. 237+00</b>			
3 OF 11			
TCB AECOM		TCB INC. WWW.TCB.AECOM.COM 17300 DALLAS PARKWAY, SUITE 1010 DALLAS, TEXAS 75248	
Unit	PW-DAL-FW	Scale	Horz: AS SHOWN Vert: AS SHOWN
Designed	SKW/MLA	Checked	TCB
Drawn	TCB	Approved	TCB
Date	11/24/2009		
Project No.	60004153		
Sheet	40	of	216

P:\4328\60004153-205bypass\cadd\sheet\phase 6 - fms52 to 205\record drawing 10..7..09\040PP-205BP-03.dgn  
 11/24/2009