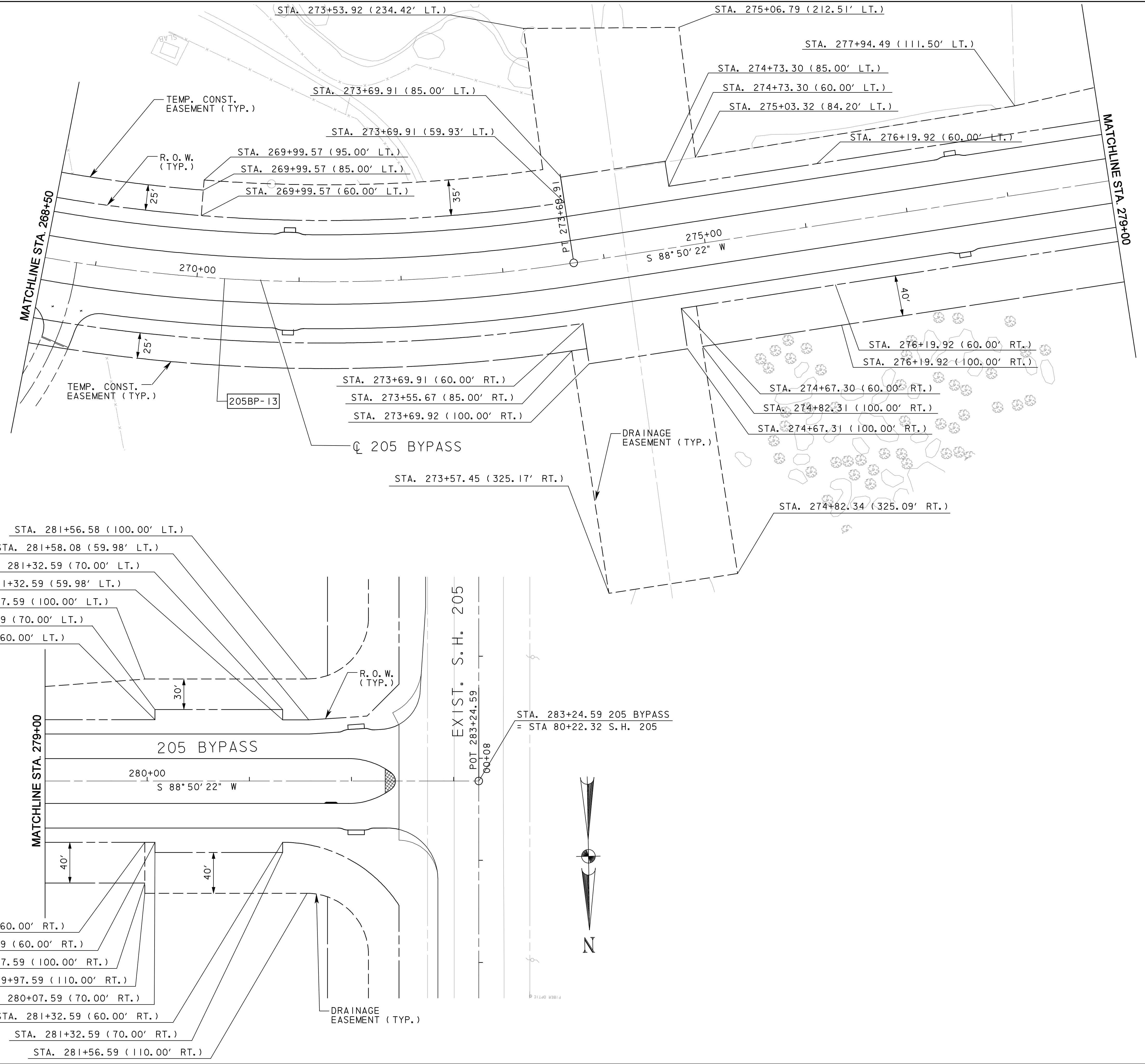




P:\328\60004153-205bypass\cadd\sheet\phase 6 - fm52 to 205\record drawing 10_7_09\036hor\1zLayout-04.dgn
11/24/2009



LEGEND
205BP-1 CURVE NUMBER

RECORD DRAWING
 This drawing is a compilation of the original sealed engineering drawing and modifications by addenda, change orders and information furnished by the contractor. Information shown that was provided by the contractor and others not associated with the design engineer cannot be verified for accuracy or completeness. Original sealed drawing is on file at the office of AECOM USA Group, Inc., TBPE REG. NO. F-3082

ORIGINAL DRAWING SEALED & SIGNED BY
 T.H. Gaertner, P.E.
 TX NO. 37124

I	REVISED PAVEMENT LIMITS	THG	7/02/08
NO.	REVISION	BY	DATE
 City of Rockwall, Texas			
205 BYPASS PHASE 6			
HORIZONTAL CONTROL LAYOUT			
4 OF 5			
		TCB INC. WWW.TCB.AECOM.COM 17300 DALLAS PARKWAY, SUITE 1010 DALLAS, TEXAS 75248	
Unit	PW-DAL-FW	Scale	Horz: AS SHOWN Vert: AS SHOWN
Designed	THG	Checked	TCB
Drawn	FG	Approved	TCB
Date	11/24/2009	Project No.	60004153
Sheet	36A	of	216