

END CONSTRUCTION AT STA 140+99.86 PHASE 4 (BK) = STA 141+00.00 SECTION 1 (AH) MATCH NEW PAVEMENT FROM SECTION 1.
 NEW PAVEMENT CONSTRUCTED IN SECTION 1 (BY OTHERS)

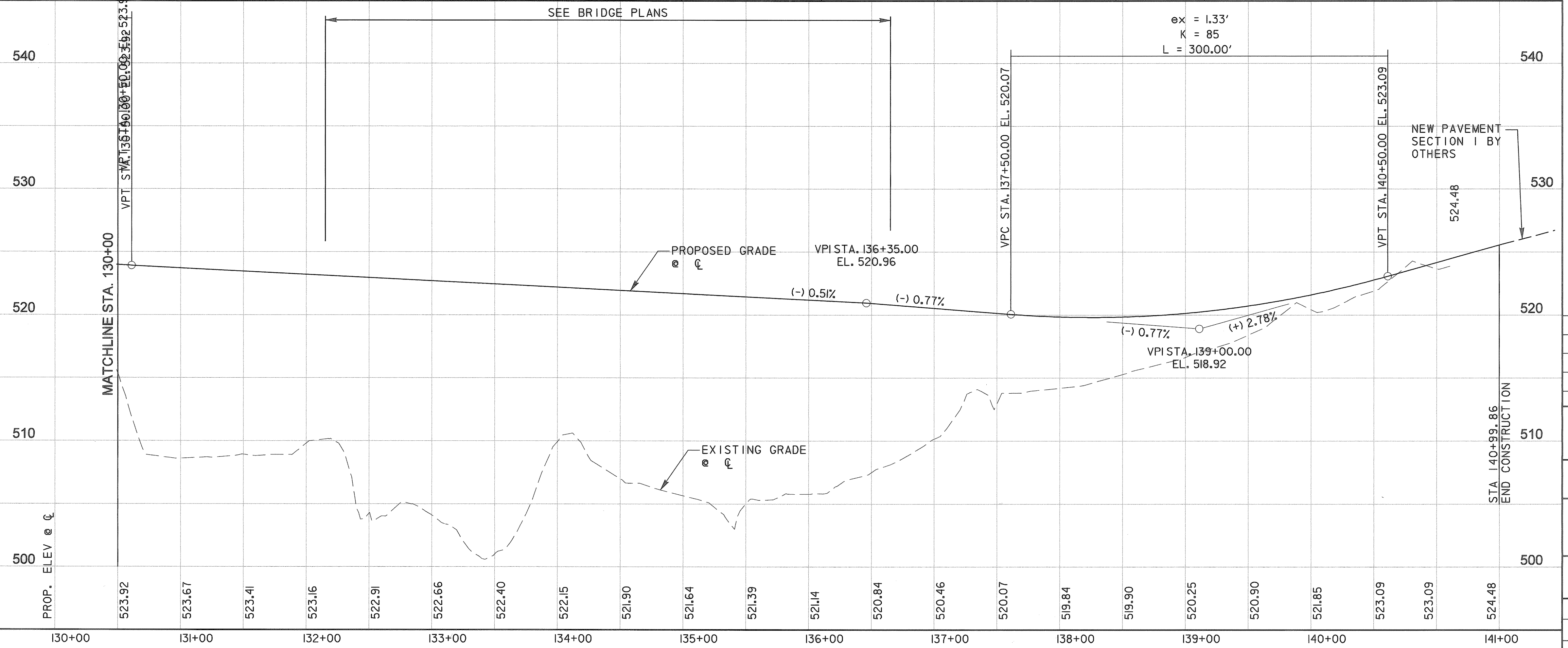
- NOTES:
 1. CONSTRUCT BRICK PAVERS. SEE MISCELLANEOUS ROADWAY DETAILS.

LEGEND

	CONCRETE PAVEMENT
	HMAC PAVEMENT
	RECESSED CURB INLET
	DROP INLET TYPE H

CURVE DATA

NO.	Δ	D	R	T	L
205BP-2	17° 02' 45.09" (LT)	05° 12' 31.35"	1100.00'	164.85'	327.26'
205BP-3	25° 14' 50.15" (RT)	03° 38' 16.18"	1575.00'	352.74'	694.02'



RECORD DRAWING
 This drawing is a compilation of the original sealed engineering drawing and modifications by addenda, change orders and information furnished by the contractor. Information shown that was provided by the contractor and others not associated with the design engineer cannot be verified for accuracy or completeness. Original sealed drawing is on file at the office of AECOM USA Group, Inc., TBPE REG. NO. F-3082

ORIGINAL DRAWING SEALED & SIGNED BY
 T.H. Gaertner, P.E.
 TX NO. 37124

NO.	REVISION	BY	DATE

City of Rockwall, Texas

205 BYPASS PHASE 4

PLAN & PROFILE
 STA. 130+00 TO STA. 141+00

2 OF 2

Unit	PW-DAL-FW	Scale	Horz: AS SHOWN Vert: AS SHOWN	Date	11/11/2009
Designed	THG	Checked	TCB	Project No.	60004153
Drawn	FG	Approved	TCB	Sheet	14 of 146

P:\4328\60004153-205Bypass\CADD\Sheets\Phase 4-120+00 to 141+00\Record Drawing 10_7_09\104Rev.dwg
 11/11/2009